



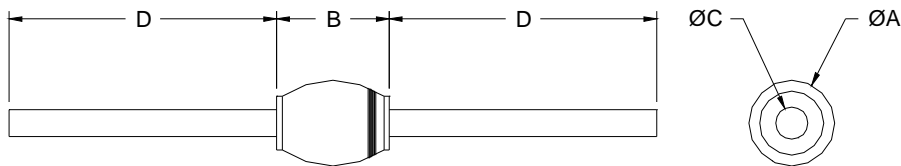
Solid State Devices, Inc.

14701 Firestone Blvd * La Mirada, Ca 90638
 Phone: (562) 404-4474 * Fax: (562) 404-1773
 ssdi@ssdi-power.com * www.ssdi-power.com

**SPD5624 - SPD5628
 and
 SPD5624SMS - SPD5628SMS**

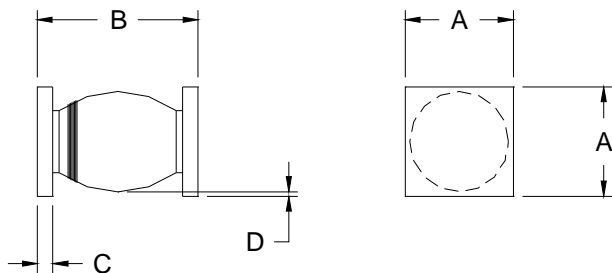
Electrical Characteristics	Symbol	Max	Units
Instantaneous Forward Voltage Drop ($I_F = 3 \text{ Adc}$, $T_A = 25^\circ\text{C}$, 300 μs pulse)	V_F	1.0	Vdc
Instantaneous Forward Voltage Drop ($I_F = 3 \text{ Adc}$, $T_A = -55^\circ\text{C}$, 300 μs pulse)	V_F	1.2	Vdc
Reverse Leakage Current (Rated V_R , $T_A = 25^\circ\text{C}$, 300 μs pulse minimum)	I_R	2	μA
Reverse Leakage Current (Rated V_R , $T_A = 100^\circ\text{C}$, 300 μs pulse minimum)	I_R	200	μA
Junction Capacitance ($V_R = 10 \text{ Vdc}$, $T_A = 25^\circ\text{C}$, $f = 1\text{MHz}$)	C_J	40	pF
Reverse Recovery Time ($I_F = 500 \text{ mA}$, $I_R = 1\text{A}$, $I_{RR} = 0.25\text{A}$, $T_A = 25^\circ\text{C}$)	t_{rr}	5	μsec

Case Outline: (Axial)



DIMENSIONS		
DIM	MIN	MAX
A	---	.200"
B	---	.230"
C	.047"	.053"
D	1.00"	---

Case Outline: (SMS)



DIMENSIONS		
DIM	MIN	MAX
A	.172"	.180"
B	.180"	.280"
C	.022"	.028"
D	.002"	---

NOTE: All specifications are subject to change without notification. SCD's for these devices should be reviewed by SSDI prior to release.

DATA SHEET #: R00019B

DOC