

DOUBLE BALANCED MIXER

2 to 18 GHz / +7 to 10 dBm LO / Low Conv. Loss / Wideband IF / Hermetic Pkg with Removable SMA



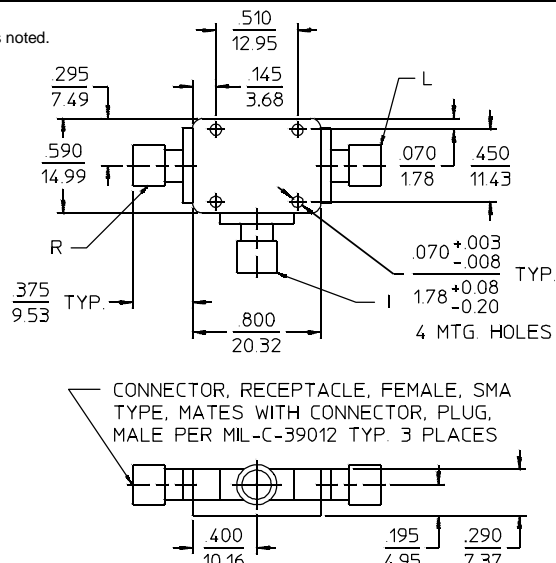
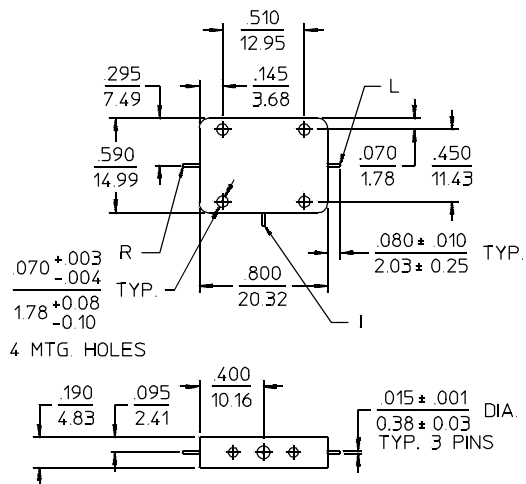
PRINCIPAL SPECIFICATIONS

Model Number	RF/LO	LO Drive	IF	Conversion		Isolation, L-R, dB,		Isolation, L-X, dB,		Isolation, R-X, dB,		VSWR	
	Frequency, GHz	Range, dBm, Nom.	Range, GHz	Loss, Max.	SSB, Typ.	Typ.	Min.	Typ.	Min.	Typ.	Min.	Typ.	Typ. LO RF
DML-2B-10G	3 - 18	+7 to +10	DC - 1 1 - 1.5 1.5 - 2	8.5 9.0 10.0	5.5 6.5 7.5		20	40	18	30	18	30	2.0:1 2.0:1

All specifications are as measured in a 50system, at nominal LO Power, in a down converter application.

Package Outline

NOTES: 1. Tolerance on 3 place decimals $\pm .010$ (.25) except as noted.
2. Dimensions in inches over mm.



23Feb96

General Notes:

1. The DML-2B-10G Double Balanced Mixer covers the frequency range of 2 to 18 GHz and is optimized for low loss and broad RF/LO bandwidth. The hermetic removable SMA package is used for performance testing and reliability.
2. Merrimac offers a broad selection of Double Balanced Mixers ideal for a variety of signal processing functions from 20 kHz to 20 GHz and for applications from routine to very special.
3. All Merrimac mixers comply with MIL-M-28837 and may be supplied screened for compliance with additional specifications for military and space applications requiring the highest reliability.

GENERAL SPECIFICATIONS

Third Order Input Intercept:	+13 dBm typ.
Noise Figure:	Within ± 1 dB of Conversion Loss
1 dB Compression Point: (Referenced to Input)	0 dBm min.
1 dB Desensitization Point: (Referenced to Input)	- 2 dBm min.
Polarity Sense:	Positive
DC Offset Voltage:	5 mV typ.
Weight with SMA, nom:	0.7 oz (20 g)
Operating Temperature:	- 55° to +85°C