



Part Number	Package	Application	Last Modified
820-IF221.288M-A	20.2 x 12.6 SMD	Base Station & Repeater	Apr 18, 2007

TYPE :
221.288 MHz Bandpass SAW Filter

PART NUMBER :
820-IF221.288M-A

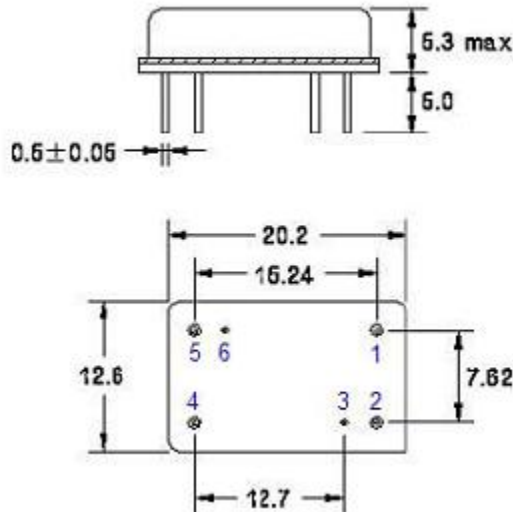


OPERATING CONDITIONS / ELECTRICAL CHARACTERISTICS

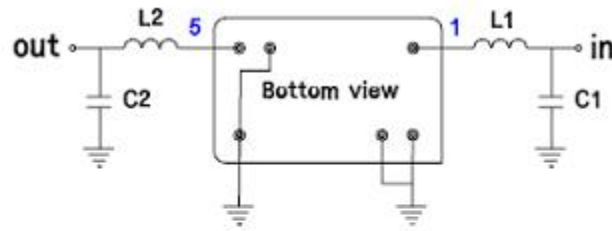
PARAMETERS	Minimum	Typical	Maximum	Units
Center Frequency	-	221.288	-	MHz
Insertion Loss at Fo	-	24.5	26.0	dB
Source Impedance (single ended)*	-	50	-	ohm
Load Impedance (single ended)*	-	50	-	ohm
Bandwidth at -1.0 dB	-	6.86	-	MHz
Bandwidth at -3.0 dB	-	7.08	-	MHz
Bandwidth at -10.0 dB	-	7.46	-	MHz
Bandwidth at -40.0 dB	-	8.04	-	MHz
Ultimate Rejection	45	50	-	dB
Amplitude Ripple	-	0.7	1.2	dBp-p
Group Delay Variation (smo 0.5%)	-	120	-	nsec
Absolute Delay at Fo	-	2.41	-	µsec
Temperature Coefficient	-	-0.03	-	ppm/°C

*With Matching Network (Reference Testing Environment Circuit as shown) Modify Impedance Values as necessary.

PACKAGE OUTLINE (mm)



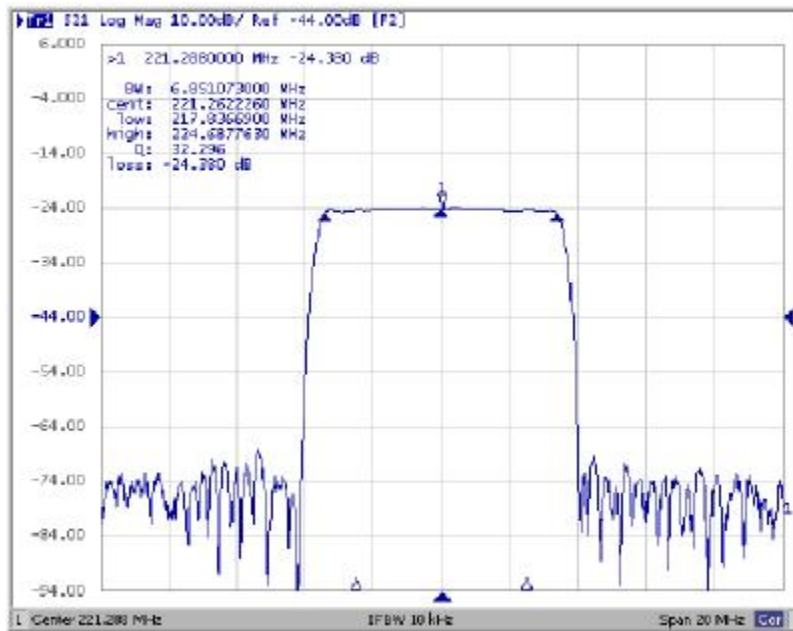
TESTING ENVIRONMENT



Test Fixture & Values	
Input	L1=39nH , C1=36pF
Output	L2=39nH , C2=30pF

PIN Description IN-1,OUT-5,GROUND-2,3,4,6

FREQUENCY RESPONSE



Oscilent Corporation - CALL **949.252.0522**

Part No.: 820-IF221.288M-A

18195 East McDermott Street , Building D , Irvine , CA 92614 , USA
 Fax: 949.252.0599 , E-Mail: Sales@Oscilent.com