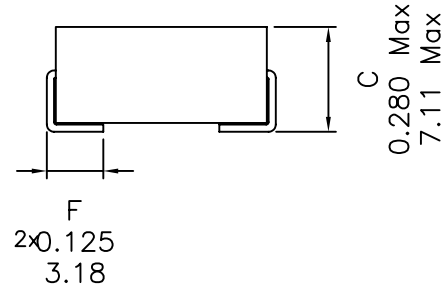
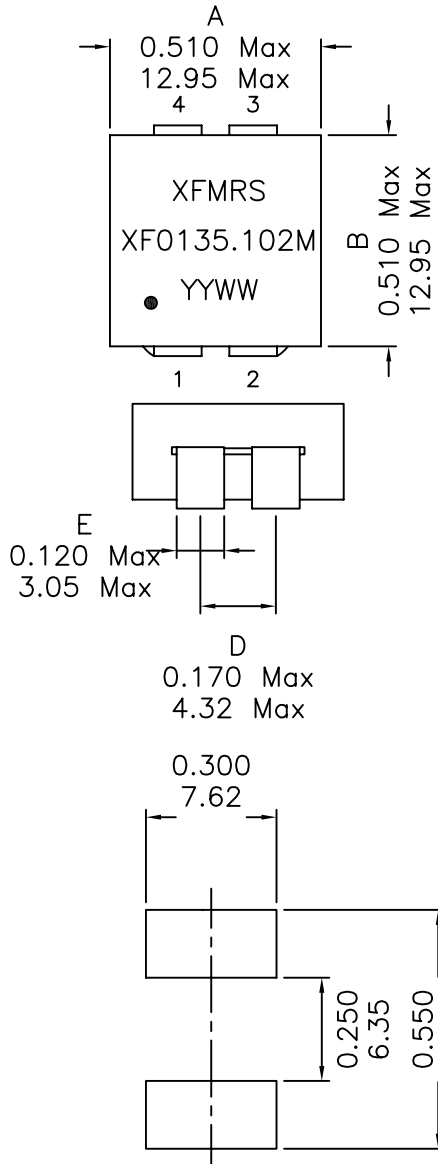
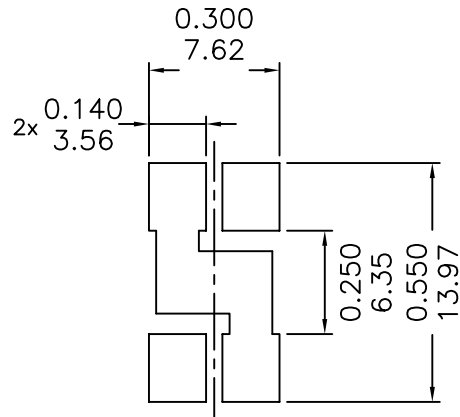


1. Mechanical Dimensions:



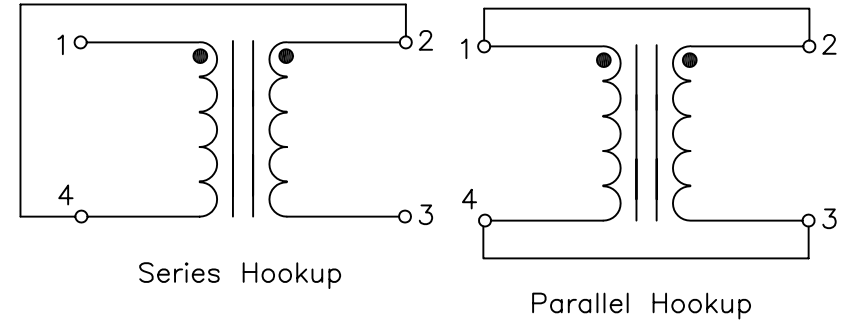
SUGGESTED PAD LAYOUT
(Parallel Configuration)



SUGGESTED PAD LAYOUT
(Series Configuration)

DOC REV.: A/1

2. Schematic:



3. Electrical Specifications: @25°C

Series
 OCL: 900nH ±20% @100KHz-2MHz Load 14ADC
 OCL: 1000nH ±20% @100KHz-2MHz
 DCR: 0.74 mOhms Typ
 Heating Current: 20A
 Saturation Current: 19A @-40°C
 Saturation Current: 18A @25°C
 Saturation Current: 14A @125°C

Parallel
 OCL: 225.0nH ±20% @100KHz-2MHz Load 24ADC
 OCL: 250.0nH ±20% @100KHz-2MHz
 DCR: 0.18 mOhms Typ
 Heating Current: 40A
 Saturation Current: 36A @-40°C
 Saturation Current: 35A @25°C
 Saturation Current: 24A @125°C

Notes:

1. Solderability: Leads shall meet MIL-STD-202, Method 208D for solderability.
2. Flammability: UL94V-0
3. ASTM oxygen index: > 28%
4. Insulation System: Class F 155°C. UL file E151556
5. Operating Temperature Range: All listed parameters are to be within tolerance from -40°C to +125°C
6. Storage Temperature Range: -55°C to +125°C
7. Aqueous wash compatible

XFMRS Inc	Title: INDUCTORS	
	P/N: XF0135.102M	REV. A
	DWN.	刘鹏 Nov-01-02
	CHK.	李小锋 Nov-01-02
UNLESS OTHERWISE SPECIFIED TOLERANCES: .xxx ±0.010 INCH .xx ±0.25 mm Dimensions in INCH/mm	APP.	BW Nov-01-02