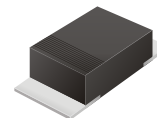


CDBM220L-G Thru. CDBM240L-G

Reverse Voltage: 20 to 40 Volts

Forward Current: 2.0 Amp

RoHS Device

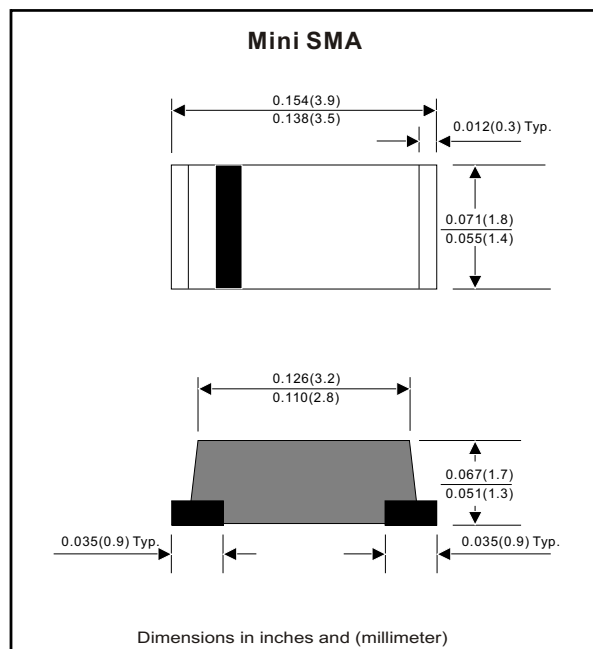


Features

- Ideal for surface mount applications.
- Easy pick and place.
- Plastic package has Underwriters Lab. flammability classification 94V-0.
- Exceeds environmental standard MIL-S-19500/228.
- Low leakage current.

Mechanical data

- Case: Mini SMA/SOD-123, molded plastic.
- Terminals: solderable per MIL-STD-750, method 2026.
- Polarity: Color band denotes cathode end.
- Approx. weight: 0.04 grams



Maximum Ratings and Electrical Characteristics

Parameter	Symbol	CDBM220L-G	CDBM240L-G	Units
Max. repetitive peak reverse voltage	V _{RRM}	20	40	V
Continuous reverse voltage	V _R	20	40	V
Max. RMS voltage	V _{RMS}	14	28	V
Peak surge forward current, 8.3ms single half sine-wave superimposed on rate load (JEDEC method)	I _{FSM}	50		A
Max. average forward current	I _o	2.0		A
Max. instantaneous forward voltage at 2.0A	V _F	0.38	0.40	V
Max. DC reverse current at T _A =25°C V _{RRM} T _A =100°C	I _R	1.0 10		mA
Max. thermal resistance, junction to ambient	R _{θJA}	70		°C/W
Diode junction capacitance	C _J	160		pF
Storage temperature	T _{STG}	-55 to +150		°C
Operating temperature	T _J	-55 to +125		°C

RATING AND CHARACTERISTIC CURVES (CDBM220L-G thru CDBM240L-G)

Fig.1 Reverse Characteristics

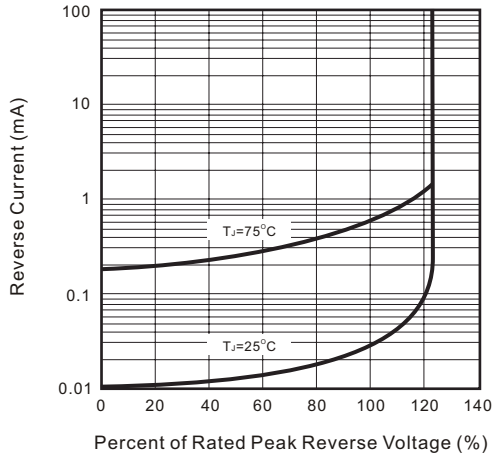


Fig.2 Forward Characteristics

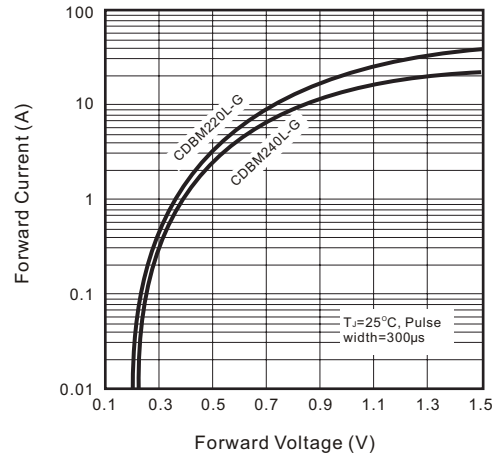


Fig.3 Junction Capacitance

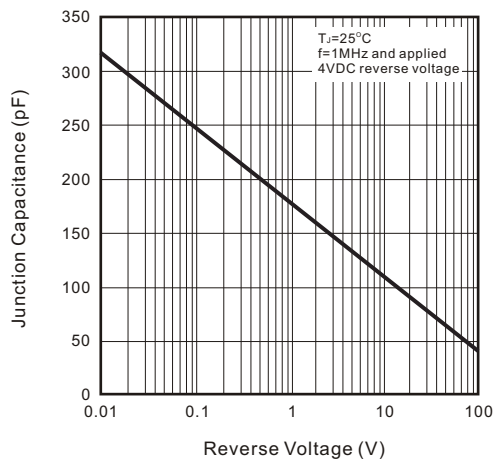


Fig.4 Current Derating Curve

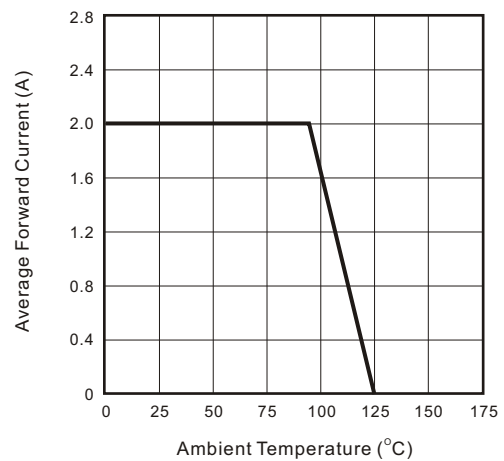


Fig.5 Non-repetitive Forward Surge Current

