



TAI-SAW TECHNOLOGY CO., LTD.

No. 3, Industrial 2nd Rd., Ping-Chen Industrial District,
Taoyuan, 324, Taiwan, R.O.C.

TEL: 886-3-4690038 FAX: 886-3-4697532

E-mail: tstsales@mail.taisaw.com Web: www.taisaw.com

Approval Sheet For Product Specification

Issued Date:

Product Name: SAW Filter 996MHz SMD 3.0×3.0mm

TST Parts No.: TA0674A

Customer Parts No.: _____

Company: _____
Division: _____
Approved by : _____
Date: _____

Checked by: _____ Asin Lin

Approval by: _____ Francis Chen

Date: _____ 2007/04/30



TAI-SAW TECHNOLOGY CO., LTD.

No. 3, Industrial 2nd Rd., Ping-Chen Industrial District,
Taoyuan, 324, Taiwan, R.O.C.

TEL: 886-3-4690038 FAX: 886-3-4697532

E-mail: tstsales@mail.taisaw.com Web: www.taisaw.com

SAW Filter 996 MHz

MODEL NO.: TA0674A

REV. NO. 1

A. MAXIMUM RATING:

1. Input Power Level: 10 dB_m
2. DC voltage: 5 V
3. Operating Temperature: -20°C to 65°C
4. Storage Temperature: -40°C to +85°C

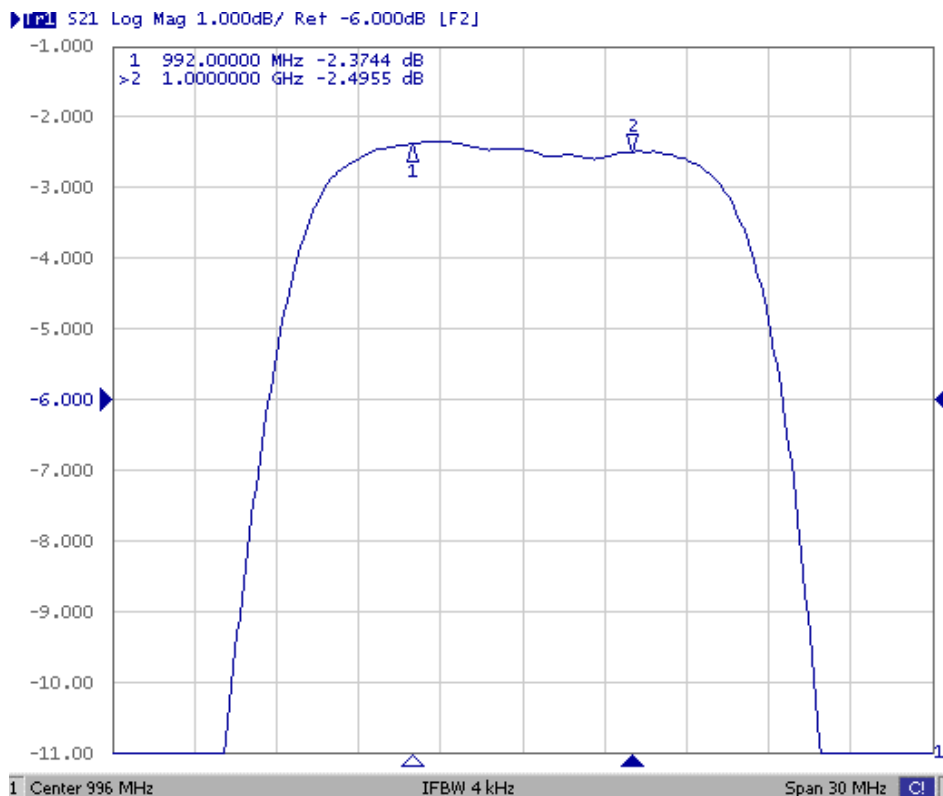
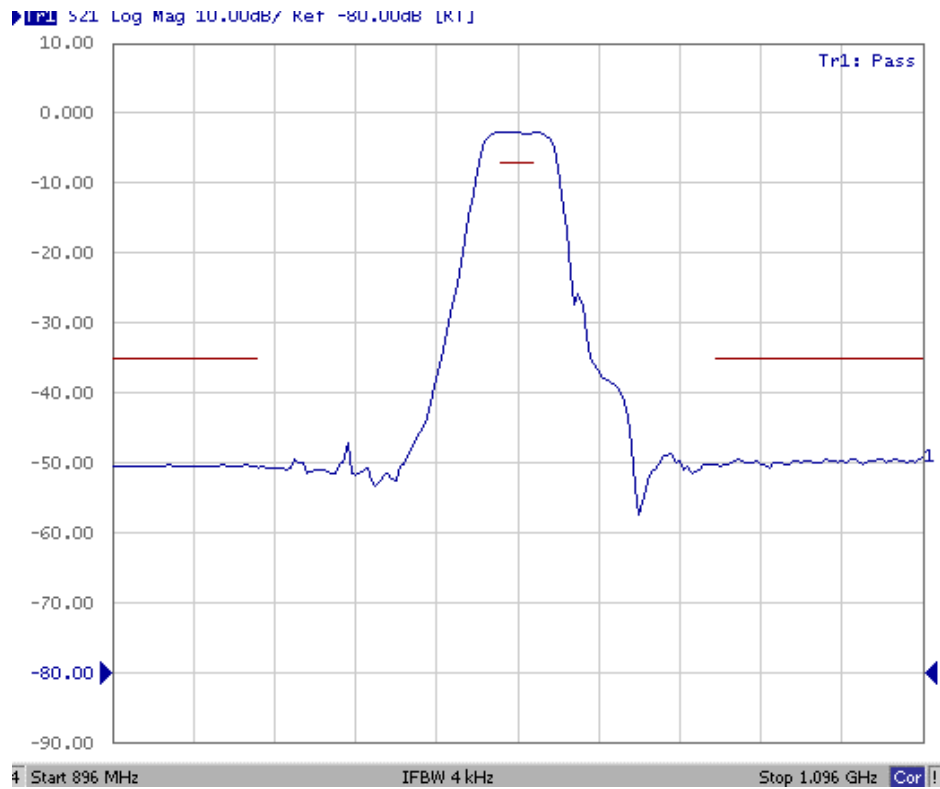
RoHS Compliant
Lead free
Lead-free soldering

B. CHARACTERISTICS:

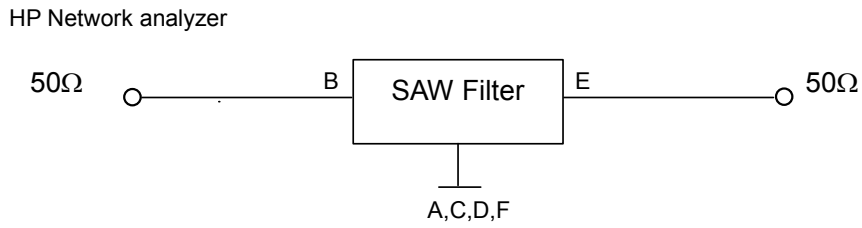
Item		Min.	Typ.	Max.
Center frequency	Fc MHz	-	996	-
Insertion loss	992 ~ 1000 MHz IL_{max} (dB)	-	2.8	4.0
Amplitude ripple	992 ~ 1000 MHz (dB)	-	0.5	2.0
Attenuation (Relative to 0 dB)				
	10.0 ~ 840.0 MHz (dB)	45	49	-
	840.0 ~ 932.0 MHz (dB)	40	46	-
	932.0 ~ 945.0 MHz (dB)	30	41	-
	1045 ~ 1200 MHz (dB)	40	45	-
Source impedance	Z _s (Ω)	-	50	-
Load impedance	Z _L (Ω)	-	50	-

Note1. No matching network required for operation at 50Ω

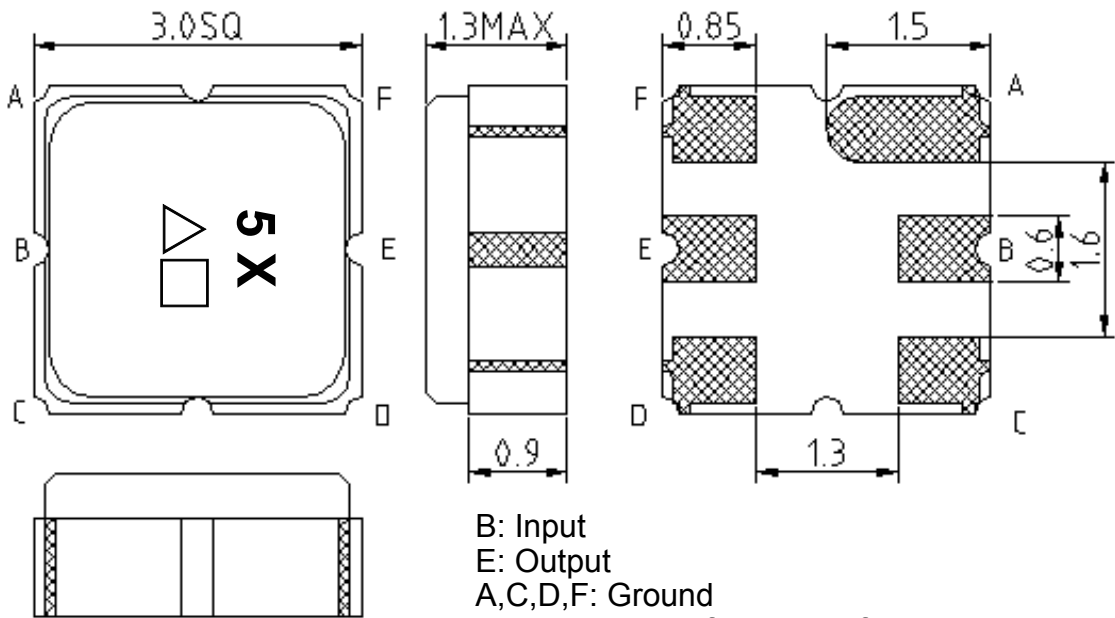
C. TRANSFER FUNCTION :



D. MEASUREMENT CIRCUIT:

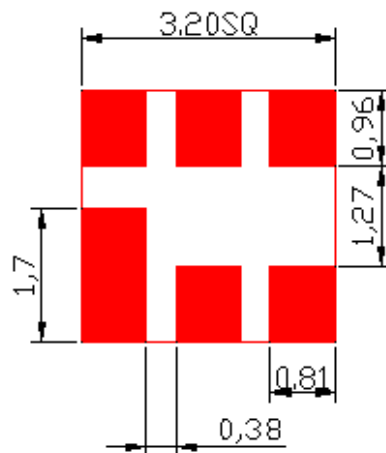


E. OUTLINE DRAWING:



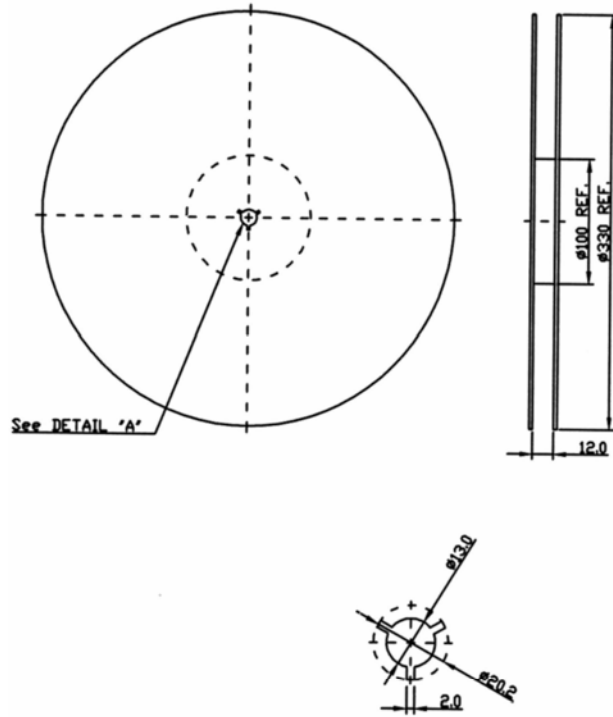
B: Input
 E: Output
 A,C,D,F: Ground
 △: Year code(7 for 2007,8 for 2008,...)
 □: Date code code (Provided by planer each year)
 Unit: mm

F.PCB FOOTPRINT:

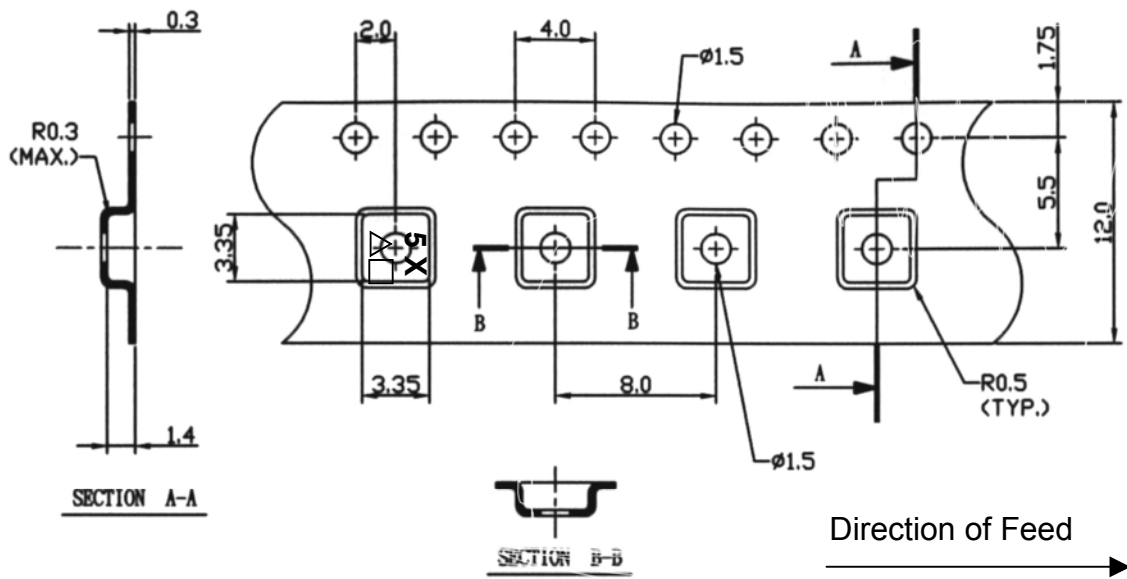


G. PACKING:

1. REEL DIMENSION



2. TAPE DIMENSION



H.RECOMMENDED REFLOW PROFILE:

