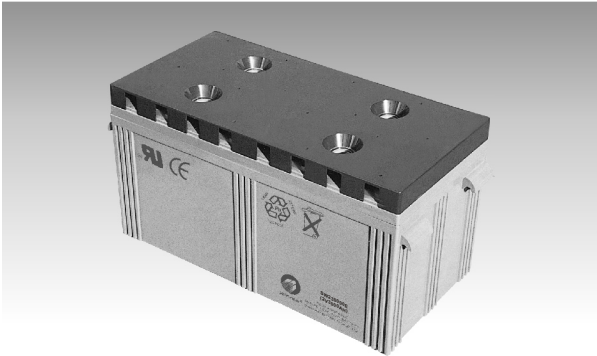
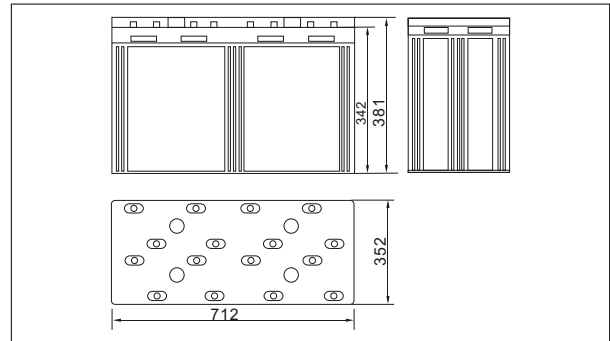




# SW230000E(2V3000AH)



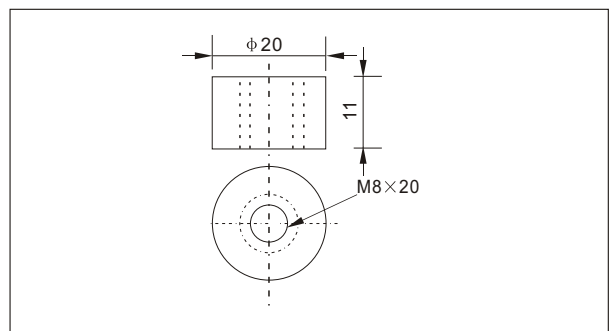
### ● Outer dimensions (mm)



### ● Specifications

Nominal Voltage	2 V	
Rated capacity (10 hour rate)	3000 Ah	
Dimensions	Total Height	381 mm (15.0 inches)
	Height	342mm (13.5 inches)
	Length	712 mm (28.0 inches)
	Width	352 mm (13.9 inches)
Weight Approx	196 Kg (431.2lbs)	

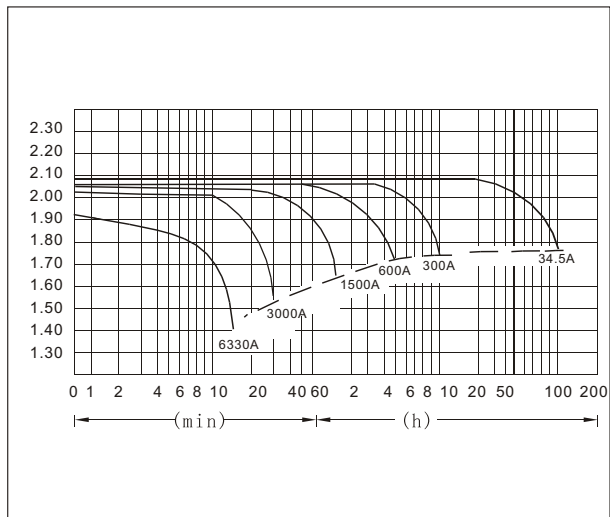
### ● Terminal Type (mm)



### ● Characteristics

Capacity 25°C(77°F)	10 hour rate(300 A)	3000 AH
	5 hour rate(480 A)	2400 AH
	1 hour rate(1650 A)	1650 AH
	1.5 hour discharge to 1.75 V	1200 A
Internal Resistance	Full charged Battery at 25°C(77°F)	1.6 mΩ
Capacity affected by Temperature (10hour rate)	40°C(104°F)	102%
	25°C(77°F)	100%
	0°C(32°F)	85%
	-15°C(5°F)	65%
Self-Discharge at 25°C(77°F)	Capacity after 3 month storage	91%
	Capacity after 6 month storage	82%
	Capacity after 12 month storage	64%
Terminal	T20	
Charge (constant Voltage)	Cycle	Initial Charging Current less than 750 A Voltage 2.35-2.40V
	Float	Voltage 2.25-2.30V

### ● Discharge Curves 25°C(77°F)



**Constant Current(Amp) and Constant Power(Watt) Discharge Table at 25°C(77°F)**

Time		10min	30min	1h	3h	4h	5h	8h	10h	20h	50h	100h
1.60V	A	6330	3420	1800	771.0	600.0	495.0	348.9	315.0	170.10	70.8	36.3
	W	11715	6107	3474	1488	1158	955	673	608	328.3	140.5	72.0
1.70V	A	6150	3330	1692.0	750.0	585.0	486.0	341.4	307.2	165.90	68.4	35.4
	W	11268	6050	3266	1448	1129	938	659	593	320.2	135.5	70.0
1.75V	A	5877	3168	1638	732.0	576.0	480.0	339.0	300.0	163.80	67.2	34.5
	W	10920	5710	3161	1413	1112	926	654	586	316.1	133.5	68.5
1.80V	A	5490	3063	1584	714.0	567.0	468.0	330.0	292.5	162.00	66.0	34.2
	W	10495	5495	3023	1385	1089	908	640	582	314.3	131.0	68.0
1.85V	A	5040	2820	1491	690.0	550.0	456.0	321.0	285.00	153.90	64.8	33.0
	W	10315	5450	2944	1369	1083	904	637	565	305.2	128.5	65.5