

PIC-MSM-332 Flatpack Magnet

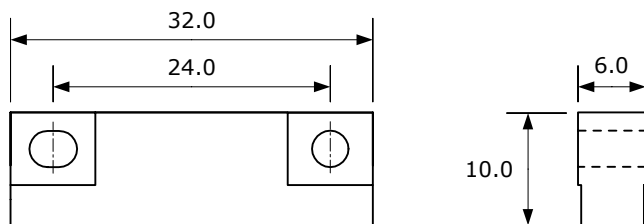
Data

Housing Material	ABS, black	
Orientation	over housing length	
Remanence Br	mT	1185
Coercivity HcB	kA/m	828
Coercivity HcJ	kA/m	955
Energy Product (BH) max.	kJ/m ³	275
Magnetic Moment M	x10 ⁻⁵ Vs cm	4.30
Operating Temperature max.	°C	85
Temperature Coefficient Tk(Br)	%/°C	-0.12

Nominal values unless otherwise specified

Dimensions

in mm



Customized types, other magnet materials and high temperature grades available.