



TAI-SAW TECHNOLOGY CO., LTD.

No. 3, Industrial 2nd Rd., Ping-Chen Industrial District,
Tao-Yuan, 324, Taiwan, R.O.C.

TEL: 886-3-4690038 FAX: 886-3-4697532

E-mail: tstsales@mail.taisaw.com Web: www.taisaw.com

Approval Sheet for Product Specification

Issued Date:

Product Name: 376.6MHz IF SAW Filter (BW=75 MHz)

TST Parts No.: TB0378A

Customer Parts No.: _____

Company: _____
Division: _____
Approved by : _____
Date: _____

Checked by: _____ Andy Yu

Approval by: _____ Francis Chen

Date: _____ 11/14/2006



TAI-SAW TECHNOLOGY CO., LTD.

No.3, Industrial 2nd Rd., Ping-Chen Industrial District, Taoyuan, Taiwan, R.O.C.

TEL: 886-3-4690038 FAX: 886-3-4697532

E-mail: tstsales3@mail.taisaw.com Web: www.taisaw.com

SAW Filter 376.6MHz (SMD 5.0×5.0 mm)

MODEL NO.: TB0378A

Rev. NO. 1

A. MAXIMUM RATINGS:

1. Input Power Level: 10 dBm
2. Operating Temperature: -20°C to 80°C
3. Storage Temperature: -40°C to 80°C

RoHS Compliant
Lead free
Lead-free soldering

B. ELECTRICAL CHARACTERISTICS:

1. Ambient Temperature: 25 °C

Characteristics	Value			Note
	Min.	Typ.	Max.	
Center frequency F_c MHz	-	376.6	-	-
Minimum Insertion loss I.L. dB	-	15	16	-
1 dB Bandwidth MHz	75	80	-	-
20 dB Bandwidth MHz	-	94	115	-
Amplitude Ripple ($F_c \pm 37.5\text{MH}$) dB	-	0.85	1.0	-
Input Power dBm	-	-	+10	-
Relative Rejection (Reference to Minimum Insertion loss)				
244.1~319.1 MHz dBc	25	33	-	-
319.1~326.4 MHz dBc	20	30	-	-

C. FREQUENCY CHARACTERISTICS:

(1) wide band of Response: (span: 300MHz)

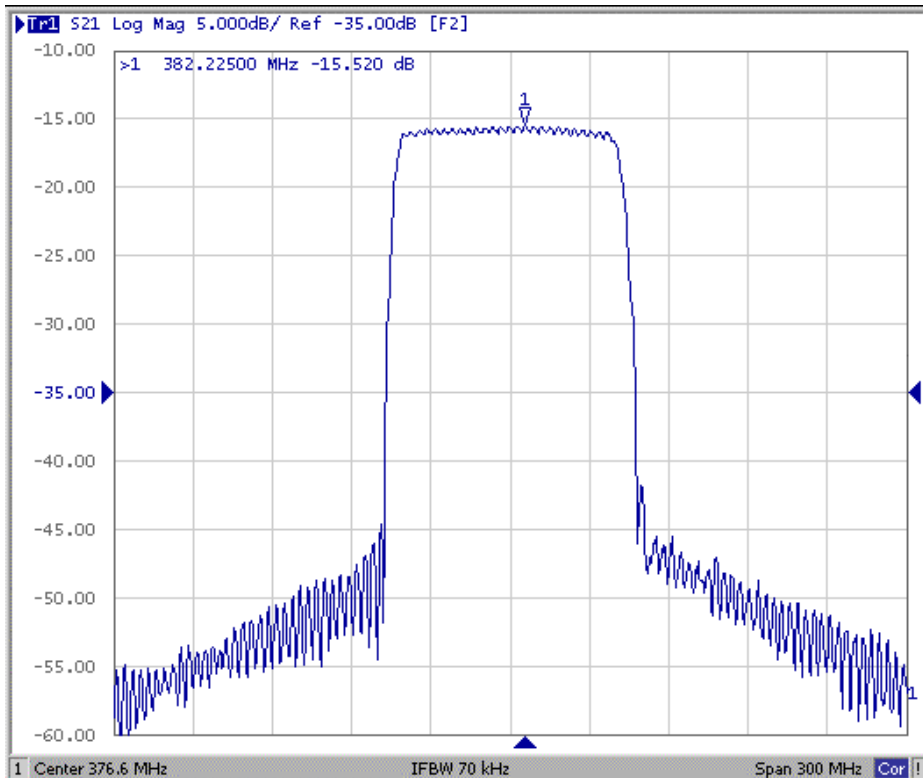


Fig1.S21 Response Horizontal:30MHz/Div Vertical: 10dB/Div

(2) Passband of Response: (span: 100MHz)

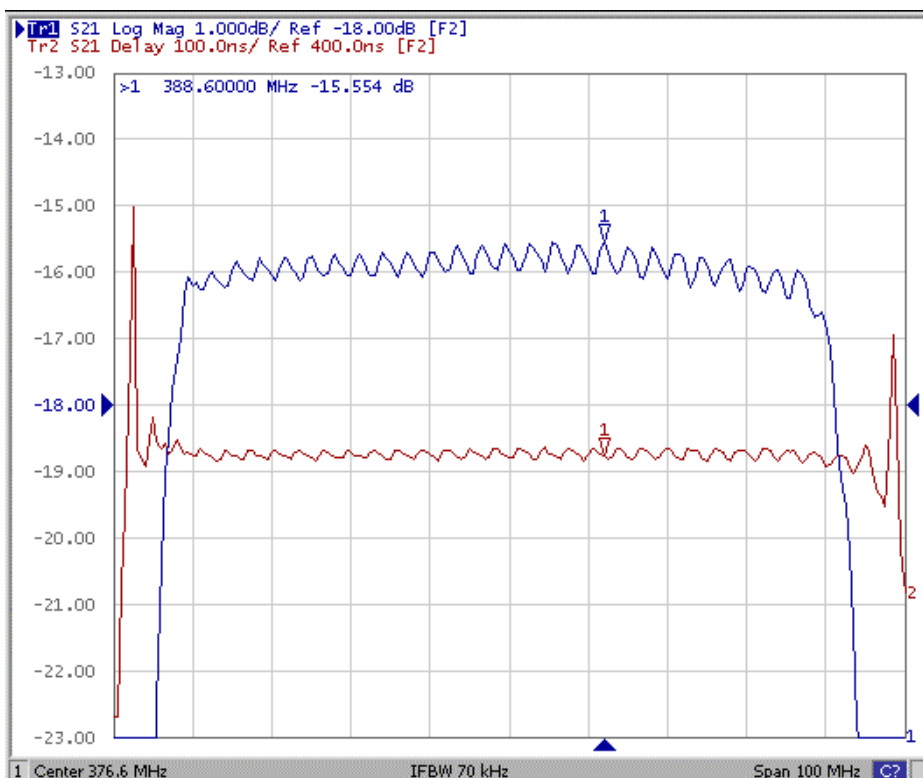
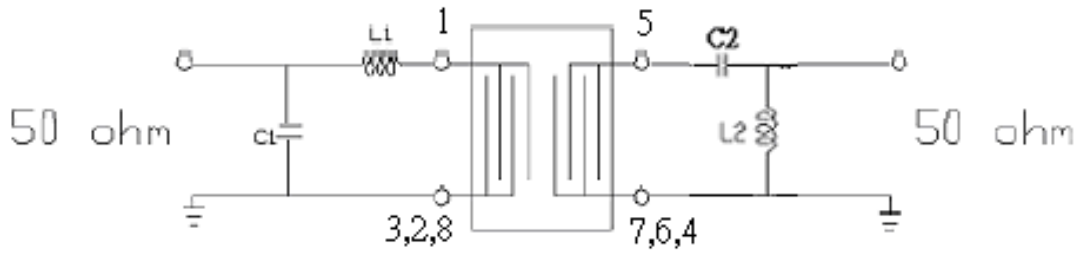


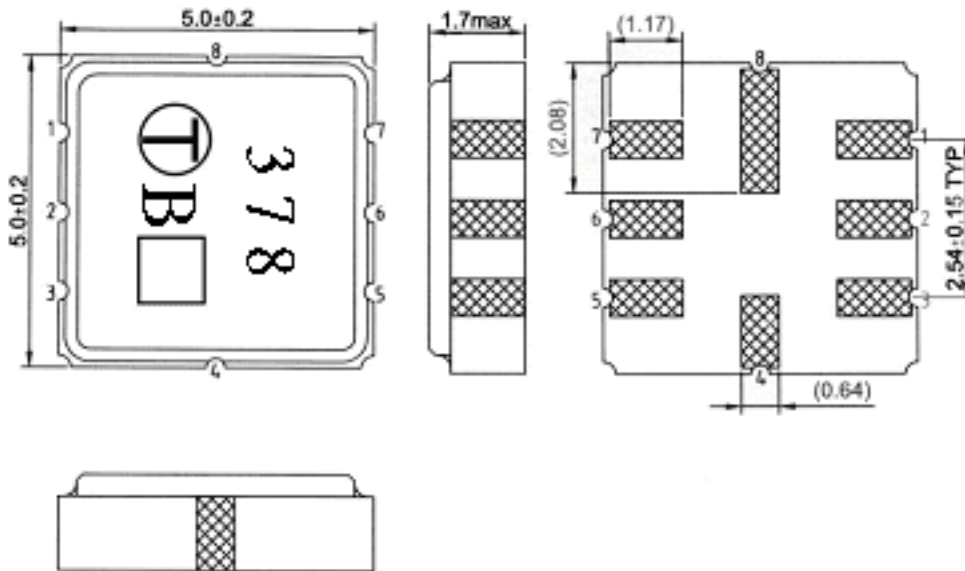
Fig2.S21 Response Horizontal:10MHz/Div Vertical: 1dB/Div

D. TEST CIRCUIT:



L1=30nH, C1=10pF, L2=27nH, C2=82pF

E. OUTLINE DRAWING:



Pin 1: RF input

Pin 5: RF output

Pin 4,8: Case Ground

Pin 2,3,6,7: Ground

□ : Week Code (Follow the table from planner each year)

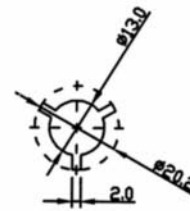
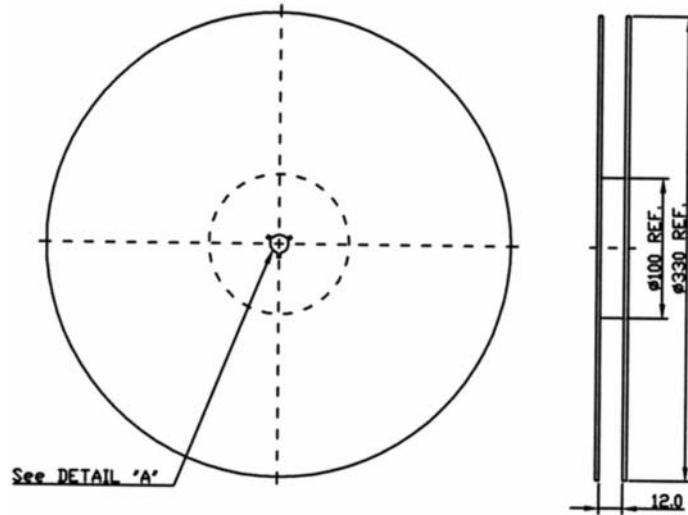
Unit : mm

△ : Product / Year Code

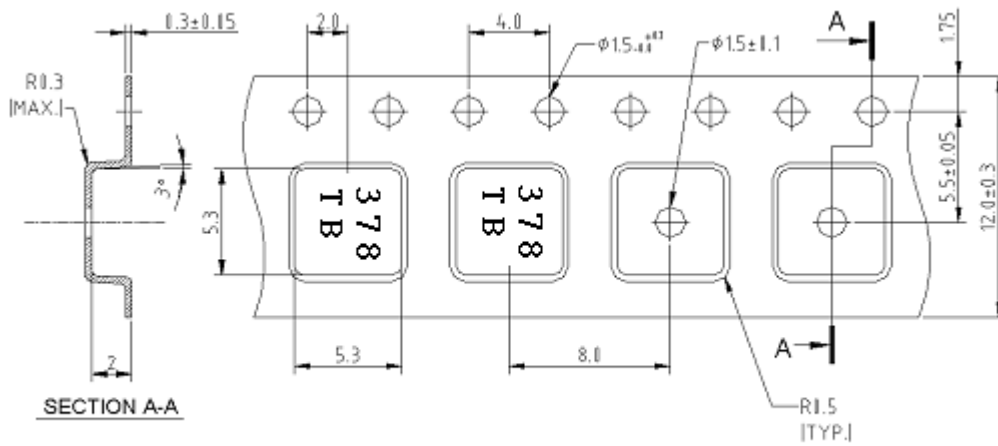
Year	2005 2009	2006 2010	2007 2011	2008 2012
Product Code	B	b	<u>B</u>	<u>b</u>

F.PACKING:

1.REEL DIMENSION



2.TAPE DIMENSION



→
Direction of feed

G. Recommended Reflow Profile:

