



# 50PzS250(2V250Ah)



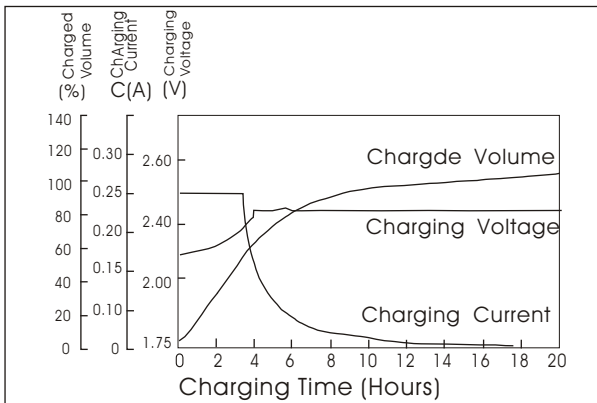
### Specifications

|                               |                  |                      |
|-------------------------------|------------------|----------------------|
| Nominal Voltage               | 2 V              |                      |
| Rated capacity (10 hour rate) | 250Ah            |                      |
| Dimensions                    | Total Height     | 431 mm (17.0 inches) |
|                               | Height           | 353mm (13.9inches)   |
|                               | Length           | 124mm(4.9inches)     |
|                               | Width            | 206 mm (8.11inches)  |
| Weight Approx (dry weight)    | 15.5Kg (34.1lbs) |                      |

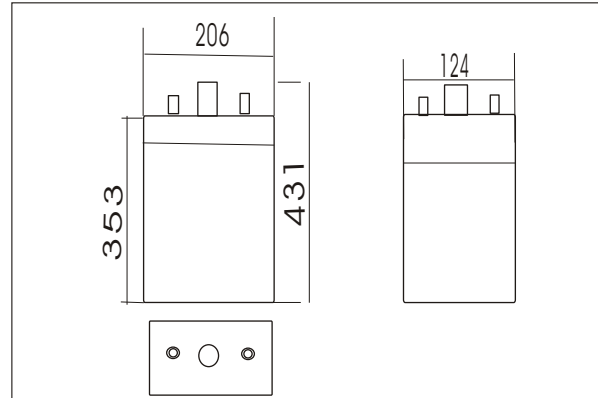
### Characteristics

|  |  |         |
|--|--|---------|
| Capacity<br>25°C(77°F)                         | 10 hour rate(25A)  | 250Ah   |
|  | 1 hour rate(112.5A)  | 112.5Ah |
|  | 0.5 hour rate(175A)  | 87.5Ah  |
| Capacity affected by Temperature (10hour rate) | 40°C(104°F)  | 102%    |
|  | 25°C(77°F)   | 100%    |
|  | 0°C(32°F)  | 85%     |
|  | -15°C(5°F)   | 65%     |
| Self-Discharge at 25°C(77°F)                   | Capacity after 3 month storage                                 | 91%     |
|  | Capacity after 6 month storage                                 | 82%     |
|  | Capacity after 12 month storage                                | 64%     |
| Terminal quantity                              | 2  |         |
| Charge (constant Voltage)                      | Initial Charging Current less than 62.5A<br>Voltage 2.33-2.38V |         |

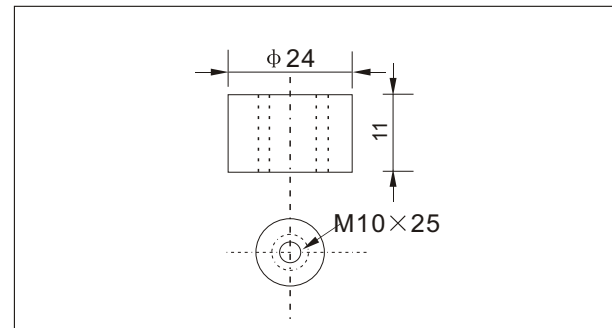
### Charging characteristics(25°C)



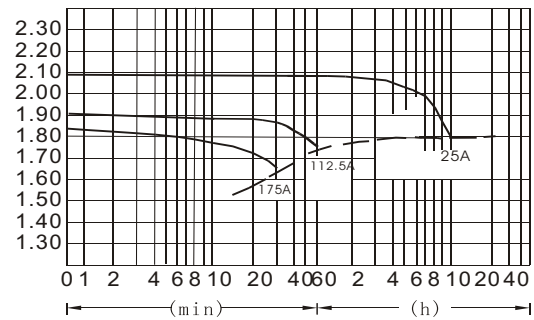
### Outer dimensions (mm)



### Terminal Type (mm)



### Discharge Curves 25°C(77°F)



### Cycling Curves

