

**Specification Status: Released**

**Maximum Electrical Rating**

**Voltage: 6.0V<sub>DC</sub> MAX**  
**Short Circuit Current: 100A**

**Notes:**

1. All terminations are Tin plated.
2. Drawing not to scale

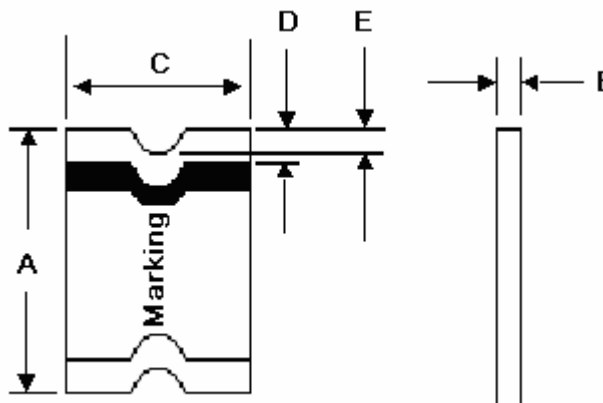
**Marking:**



**K**

**PART IDENTIFICATION**

**MANUFACTURER'S MARK**



**TABLE I. DIMENSIONS:**

A		B		C		D		E
MIN	MAX	MIN	MAX	MIN	MAX	MIN	MAX	MIN
3.00	3.40	0.67	1.00	1.37	1.80	0.25	0.75	0.076
(0.118)	(0.134)	(0.026)	(0.039)	(0.054)	(0.071)	(0.010)	(0.030)	(0.003)

mm:  
in:

**TABLE II. PERFORMANCE RATINGS:**

CURRENT RATINGS**						TIME TO TRIP **	RESISTANCE VALUES	TRIPPED-STATE POWER DISSIPATION**
AMPERES AT 0°C		AMPERES AT 20°C		AMPERES AT 60°C		SECONDS AT 20°C, 8.0A MAX	OHMS AT 20°C	WATTS AT 20°C, 6.0V MAX
HOLD	TRIP	HOLD	TRIP	HOLD	TRIP		MIN	MAX*
1.30	2.60	1.10	2.20	0.80	1.60	0.1	0.07	0.20
								0.8

\* Maximum resistance is measured 1 hour after reflow.

\*\* Values specified were determined using PCB's with 0.030"X1.5 ounce copper traces.

Agency Recognitions:  
 Reference Documents:  
 Precedence:  
 Effectivity:  
 CAUTION:

UL, CSA, TÜV  
 PS300  
 This specification takes precedence over documents referenced herein.  
 Reference documents shall be the issue in effect on the date of invitation for bid.  
 Operation beyond the rated voltage or current may result in rupture, electrical arcing or flam

**Materials Information**

**ROHS Compliant**

**ELV Compliant**

**Pb-Free**

Directive 2002/95/EC  
Compliant

Directive 2000/53/EC  
Compliant

