

DR371-2 Series Radial Leaded Inductors

Features

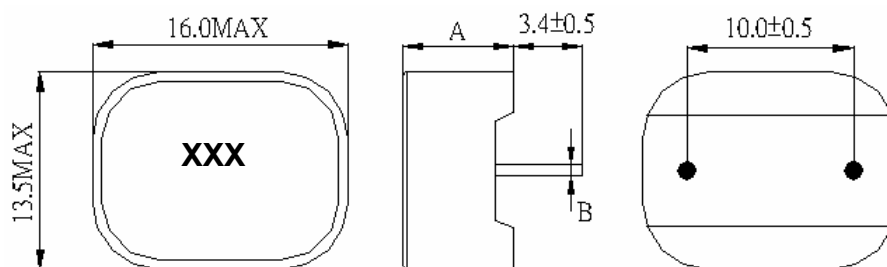
- High Current Rating
- Height: 11mm Max
- Inductance Range: 0.39 μ H – 33 μ H
- Operating Temperature -55°C to +125°C
- Non-RoHS Versions are Available (Note 5)



ELECTRICAL SPECIFICATIONS AT 25°C

Part number	Inductance (μ H) 1V @ 100kHz, 0Adc	DCR (m Ω) Max.	Heating Current Idc (Note 3)	Saturating Current Idc (Note 4)
DR371-2-391	0.39	0.7	37	54
DR371-2-471	0.47	0.75	36	50
DR371-2-561	0.56	0.75	36	50
DR371-2-801	0.8	1.00	32	45
DR371-2-901	0.9	1.00	32	43
DR371-2-102	1.0	1.32	27	40
DR371-2-122	1.2	1.36	26	40
DR371-2-152	1.5	1.72	23.5	35
DR371-2-222	2.2	2.5	20	30
DR371-2-103	10.0	11.2	9	12
DR371-2-333	33.0	42	5	8

MECHANICAL SPECIFICATIONS



Part Number	A	B
DR371-2-391	9.5 MAX	1.7 \pm 0.2
DR371-2-471	9.5 MAX	1.7 \pm 0.2
DR371-2-561	9.5 MAX	1.7 \pm 0.2
DR371-2-801	11.0 MAX	1.7 \pm 0.2
DR371-2-901	11.0 MAX	1.7 \pm 0.2
DR371-2-102	11.0 MAX	1.5 \pm 0.2
DR371-2-122	11.0 MAX	1.5 \pm 0.2
DR371-2-152	11.0 MAX	1.5 \pm 0.2
DR371-2-222	11.0 MAX	1.3 \pm 0.2
DR371-2-103	11.0 MAX	1.0 \pm 0.2
DR371-2-333	11.0 MAX	0.65 \pm 0.2

NOTES:

1. Dimensions are shown in inches/millimeters
2. Inductance tolerance: \pm 20%
3. DC current that will cause a rise of 40°C from ambient
4. DC current causing a 30% drop in inductance
5. For non-RoHS parts replace DR prefix with 42- (e.g. DR371-2 becomes 42-371-2)
6. Terminal finish is compliant to RoHS requirements