



# TAI-SAW TECHNOLOGY CO., LTD.

No. 3, Industrial 2nd Rd., Ping-Chen Industrial District,  
Taoyuan, 324, Taiwan, R.O.C.

TEL: 886-3-4690038 FAX: 886-3-4697532

E-mail: [tstsales@mail.taisaw.com](mailto:tstsales@mail.taisaw.com) Web: [www.taisaw.com](http://www.taisaw.com)

## Approval Sheet For Product Specification

Issued Date: Nov, 24, 2006

Product Name: SAW Filter 78 MHz SMD 13.3x6.5 mm

TST Parts No.:TB0444A

Customer Parts No.: \_\_\_\_\_

Company: _____
Division: _____
Approved by : _____
Date: _____

Checked by: \_\_\_\_\_ Bob Chau

Approval by: \_\_\_\_\_ Francis Chen

Date: \_\_\_\_\_ 11, 24, 2006



# TAI-SAW TECHNOLOGY CO., LTD.

No. 3, Industrial 2nd Rd., Ping-Chen Industrial District,  
Taoyuan, 324, Taiwan, R.O.C.

TEL: 886-3-4690038 FAX: 886-3-4697532

E-mail: [tstsales@mail.taisaw.com](mailto:tstsales@mail.taisaw.com) Web: [www.taisaw.com](http://www.taisaw.com)

## SAW Filter 78MHz

MODEL NO.:TB0444A

REV. NO.:1

### A. MAXIMUM RATING:

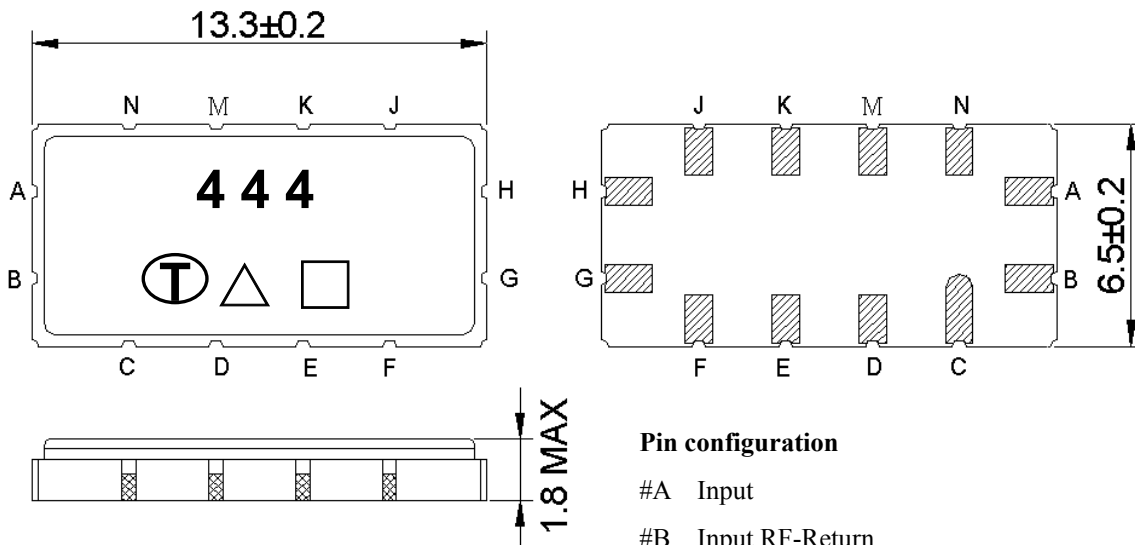
1. Input Power Level: 10 dBm
2. DC Voltage : 5V
3. Operating Temperature: -20°C to 70°C
4. Storage Temperature: -40°C to 85°C

RoHS Compliant  
Lead free  
Lead-free soldering

### B. ELECTRICAL CHARACTERISTICS:

Item	Unit	Min.	Type.	Max.	Note
Center frequency, <b>Fc</b>	MHz	-	78	-	-
Insertion Loss at <b>Fc</b> (-30 to +85°C) <b>IL</b>	dB	-	3.1	8	-
Insertion Loss at <b>Fc</b> (-10 to +65°C) <b>IL</b>			2.9	5.5	
Passband Ripple ( <b>Fc</b> ±7.5KHz )	dB	-	0.05	0.6	-
Absolute Group Delay at <b>Fc</b>	μs	-	15	25	-
Group Delay Variation ( <b>Fc</b> ±7.5KHz ), <b>GD</b>	μs	-	1.5	10	-
Attenuation:					
<b>Fc</b> - 10 to <b>Fc</b> - 1 MHz	dB	35	65	-	-
<b>Fc</b> + 1 to <b>Fc</b> + 10 MHz	dB	35	40	-	-

**C. OUTLINE DRAWING:**



**Pin configuration**

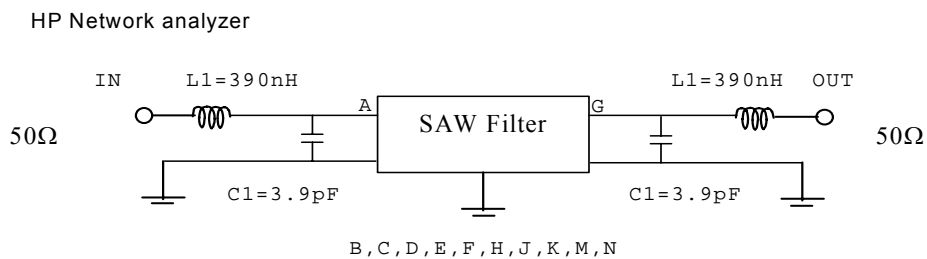
- #A Input
- #B Input RF-Return
- #G Output
- #H Output RF-Return
- #C, D, E, F, J, K, M, N To be grounded
- Date code (Follow the table from planner each year)
- △ Year Code
- Unit mm

**Product Year Code**

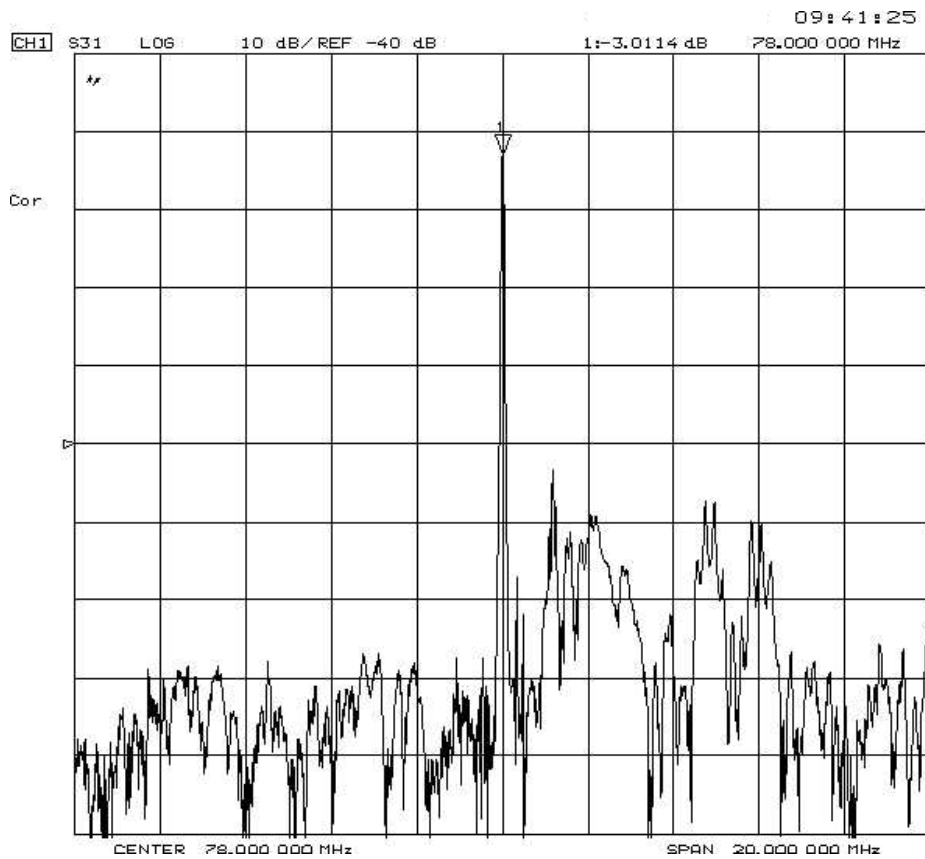
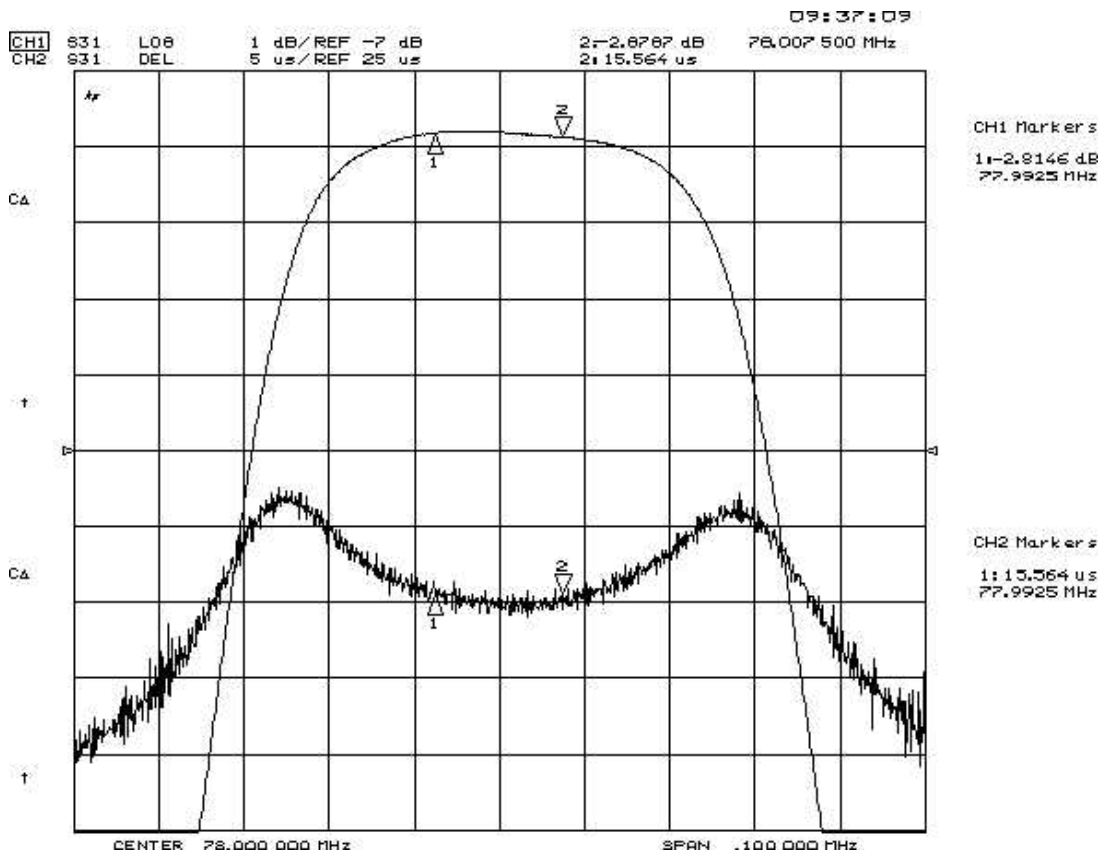
Year	2001 2005	2002 2006	2003 2007	2004 2008
Product Code	B	b	<u>B</u>	<u>b</u>

**D. MEASUREMENT CIRCUIT:**

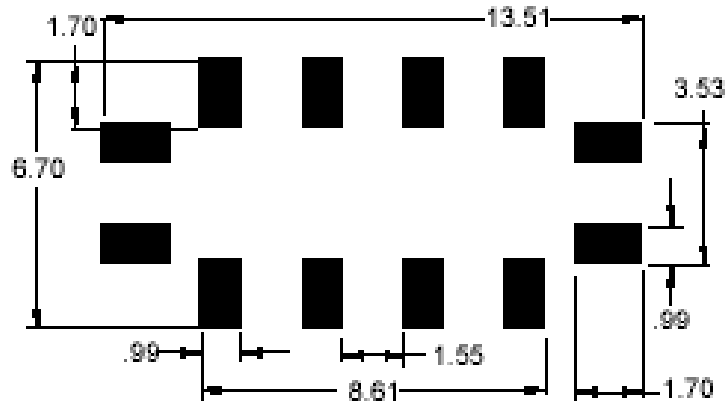
**50 Ohm Test circuit ( single-ended / single-ended )**



# E. Frequency Characteristics :

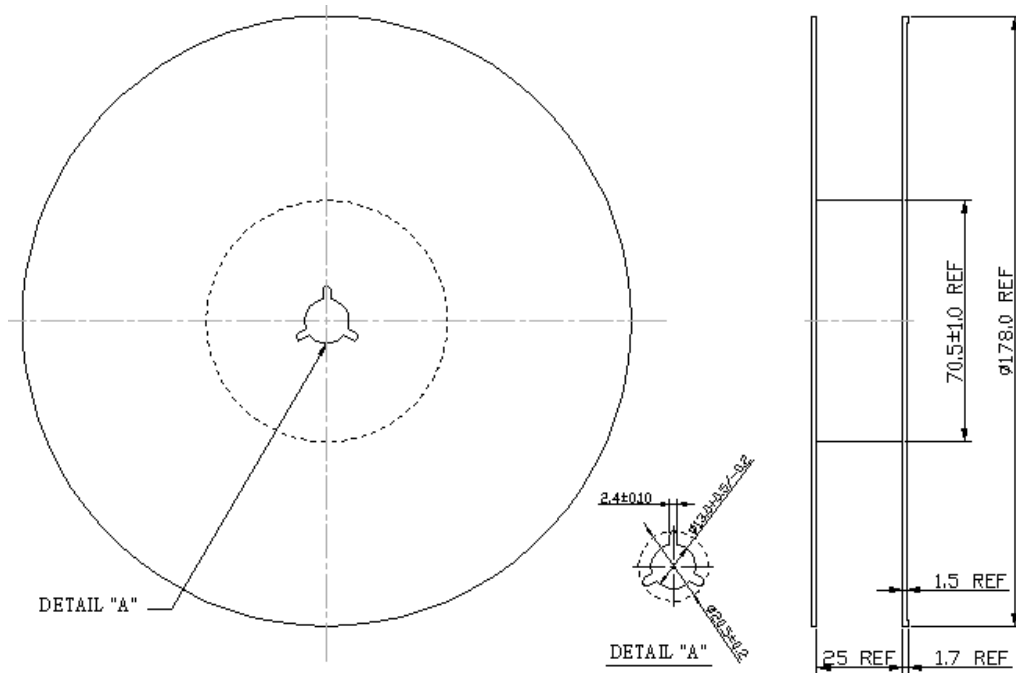


F. PCB Footprint:

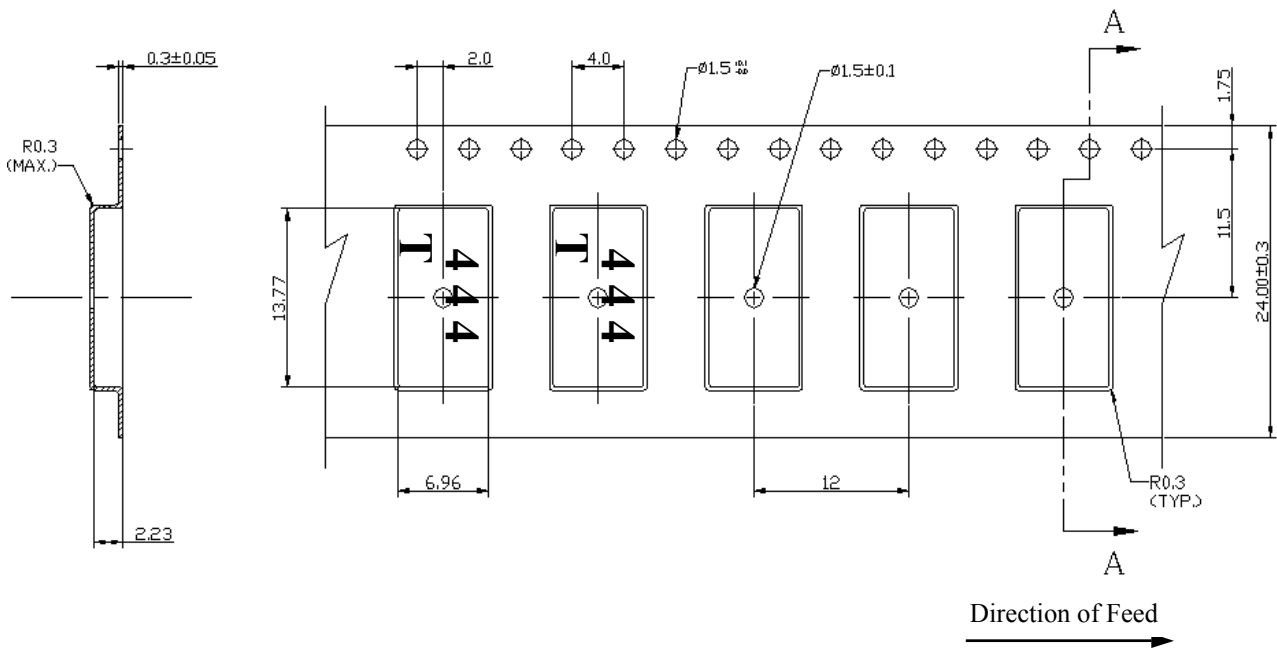


**G. PACKING:**

**1. REEL DIMENSION**



**2. TAPE DIMENSION**



## H. RECOMMENDED REFLOW PROFILE :

