

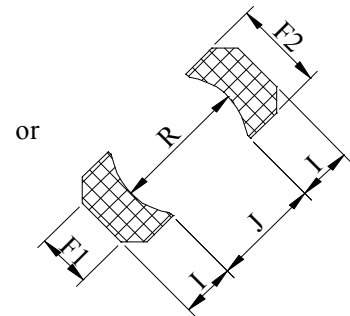
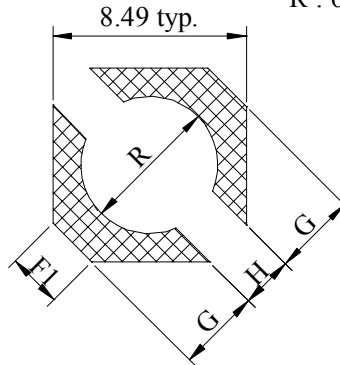
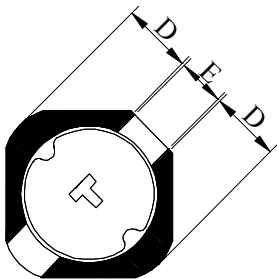
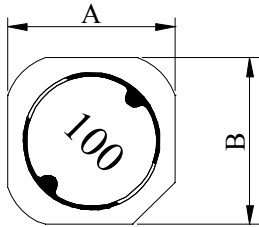
SPECIFICATION FOR APPROVAL

REF : 20071112-A

PAGE: 1

PROD. NAME	SHIELDED SMD POWER INDUCTOR	ABC'S DWG NO.	SV7028□□□□L□-□□□
		ABC'S ITEM NO.	

CONFIGURATION & DIMENSIONS :



- A : 7.30±0.20 m/m
- B : 7.30±0.20 m/m
- C : 2.80±0.20 m/m
- D : 3.15 typ. m/m
- E : 2.10 typ. m/m
- F1: 2.40 ref. m/m
- F2: 4.00 ref. m/m
- G : 3.65 ref. m/m
- H : 2.30 ref. m/m
- I : 2.40 ref. m/m
- J : 4.80 ref. m/m
- R : 6.00 ref. m/m

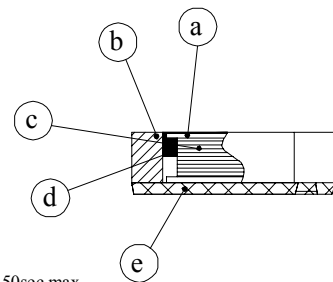
SCHEMATIC DIAGRAM :



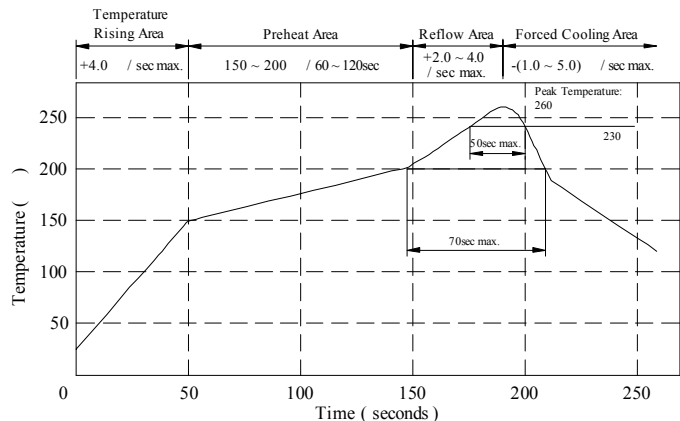
(PCB Pattern suggestion)

MATERIALS :

- a . Core : Ferrite DR core
- b . Core : Ferrite RI core
- c . Wire : Enamelled copper wire (Class H)
- d . Adhesive : Epoxy resin
- e . Terminal : Ag/Ni/Sn
- f . Remark : Products comply with RoHS' requirements



Peak Temp : 260 max.
 Max time above 230 : 50sec max.
 Max time above 200 : 70sec max.



GENERAL SPECIFICATION :

- a . Temp. rise : 40 typ.
- b . Storage temp. : -40 ----+125
- c . Operating temp. : -40 ----+105
- d . Resistance to solder heat : 260 .10 secs.

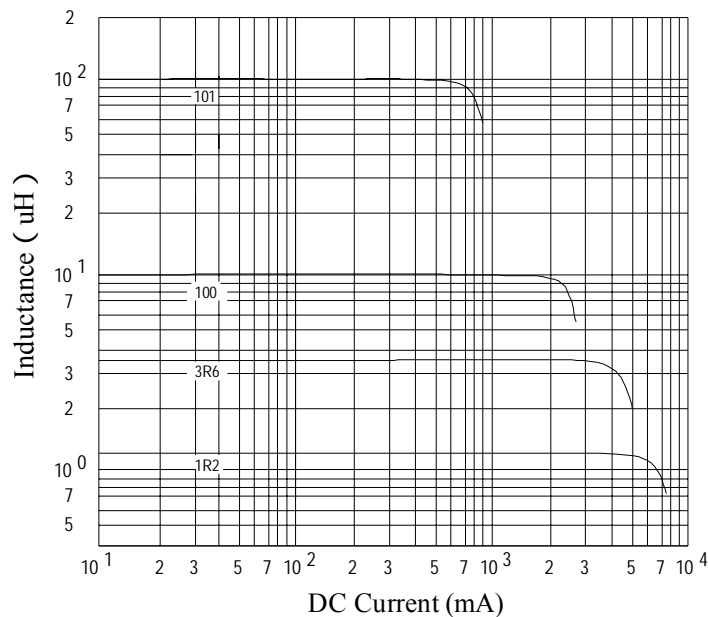
SPECIFICATION FOR APPROVAL

PROD. NAME	SHIELDED SMD POWER INDUCTOR	ABC'S DWG NO.	SV7028□□□□L□-□□□
		ABC'S ITEM NO.	

. ELECTRICAL CHARACTERISTICS :

DWG No.	Inductance (μH)	Q ref.	Test Freq. (MHz)	SRF (MHz) typ.	RDC (mΩ)		I _{rms} (mA) max.	Isat ₁ (mA) (25) typ.	Isat ₂ (mA) (105) typ.	Isat ₃ (mA) (125) typ.
					typ.	max.				
SV70281R2YL□-□□□	1.20 ± 30 %	10	7.96	80	9.20	12.0	4500	5650	4450	4200
SV70282R0YL□-□□□	2.00 ± 30 %	10	7.96	60	12.0	15.5	4000	4300	3500	3300
SV70282R7YL□-□□□	2.70 ± 30 %	8	7.96	50	14.0	18.0	3700	3900	3150	2700
SV70283R6YL□-□□□	3.60 ± 30 %	8	7.96	40	16.0	21.0	3500	3500	2800	2600
SV70284R6YL□-□□□	4.60 ± 30 %	8	7.96	36	21.0	27.5	3200	3200	2600	2300
SV70286R8YL□-□□□	6.80 ± 30 %	8	7.96	30	27.5	36.0	2800	2800	2350	1900
SV70288R0YL□-□□□	8.00 ± 30 %	8	7.96	26	32.0	42.0	2600	2600	2000	1800
SV7028100YL□-□□□	10.00 ± 30 %	10	2.52	22	40.0	52.0	2500	2300	1850	1650
SV7028150YL□-□□□	15.00 ± 30 %	10	2.52	20	50.0	65.0	2000	2000	1600	1400
SV7028220YL□-□□□	22.00 ± 30 %	8	2.52	16	78.0	100.0	1600	1600	1300	1100
SV7028330YL□-□□□	33.00 ± 30 %	8	2.52	12	115.0	150.0	1200	1300	1050	820
SV7028470YL□-□□□	47.00 ± 30 %	8	2.52	10	165.0	215.0	1000	1000	800	750
SV7028680YL□-□□□	68.00 ± 30 %	8	2.52	8	235.0	310.0	800	900	700	650
SV7028101YL□-□□□	100.00 ± 30 %	8	0.796	6	350.0	455.0	700	800	600	500
SV7028151YL□-□□□	150.00 ± 30 %	10	0.796	5	570.0	740.0	520	600	460	400
SV7028221YL□-□□□	220.00 ± 30 %	8	0.796	4	770.0	1000.0	450	500	400	350
SV7028331YL□-□□□	330.00 ± 30 %	8	0.796	3	1300.0	1700.0	320	400	300	260
SV7028471YL□-□□□	470.00 ± 30 %	8	0.796	2	1700.0	2200.0	300	350	270	230

- 1). □: Packaging Information... [A]: Bulk [B]: Taping Reel
- 2). "- □□□":Reference code
- 3). Inductance Test Freq. : 100KHz /0.1V
- 4). I_{rms} base on Temp. rise 40 max.
- 5). Isat base on L / L0A=35% typ. @ Inductance VS. DC Current Curve at 25



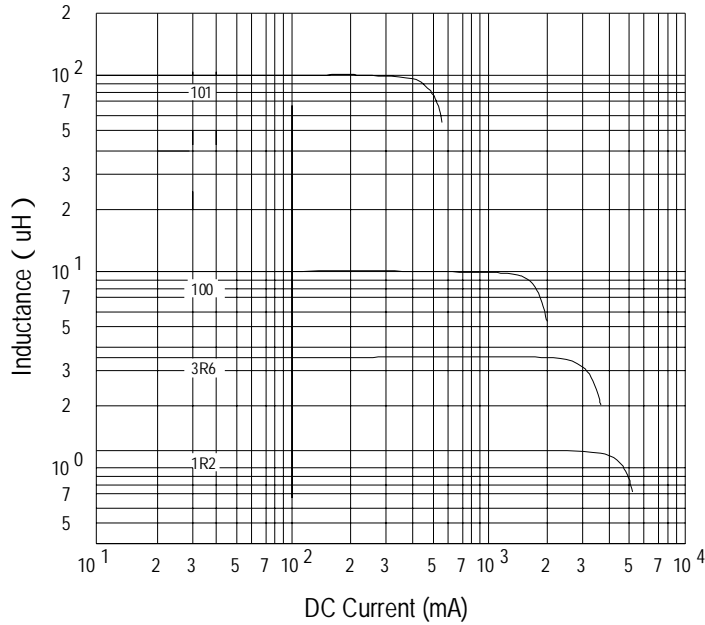
SPECIFICATION FOR APPROVAL

REF : 22071112-A

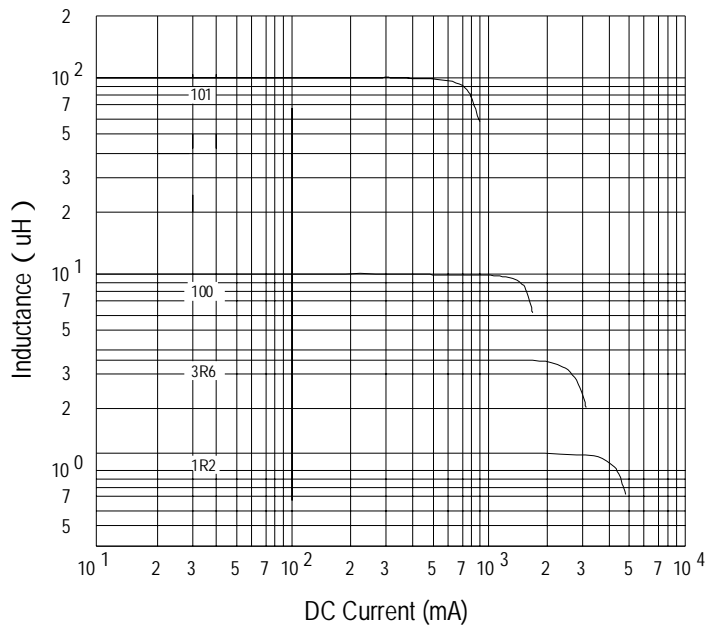
PAGE: 3

PROD. NAME	SHIELDED SMD POWER INDUCTOR	ABC'S DWG NO. ABC'S ITEM NO.	SV7028□□□□L□-□□□
---------------	--------------------------------	---------------------------------	------------------

@ Inductance VS. DC Current Curve at 105



@ Inductance VS. DC Current Curve at 125



AR-001A



SPECIFICATION FOR APPROVAL

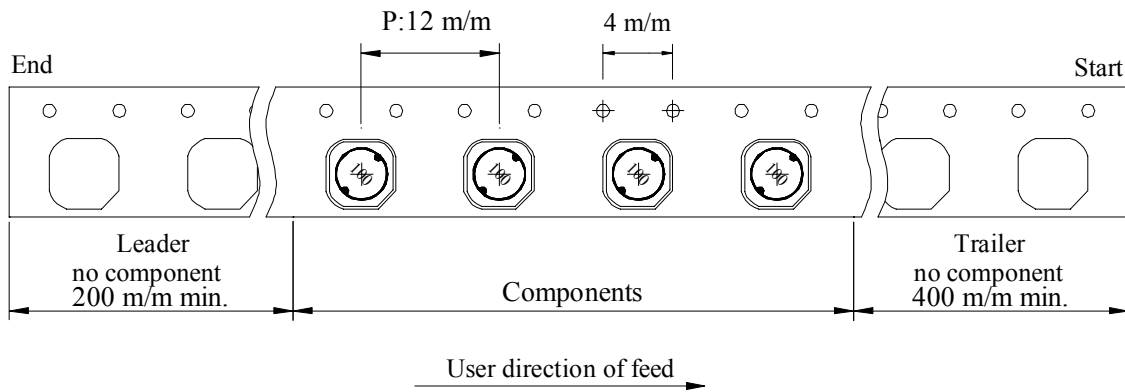
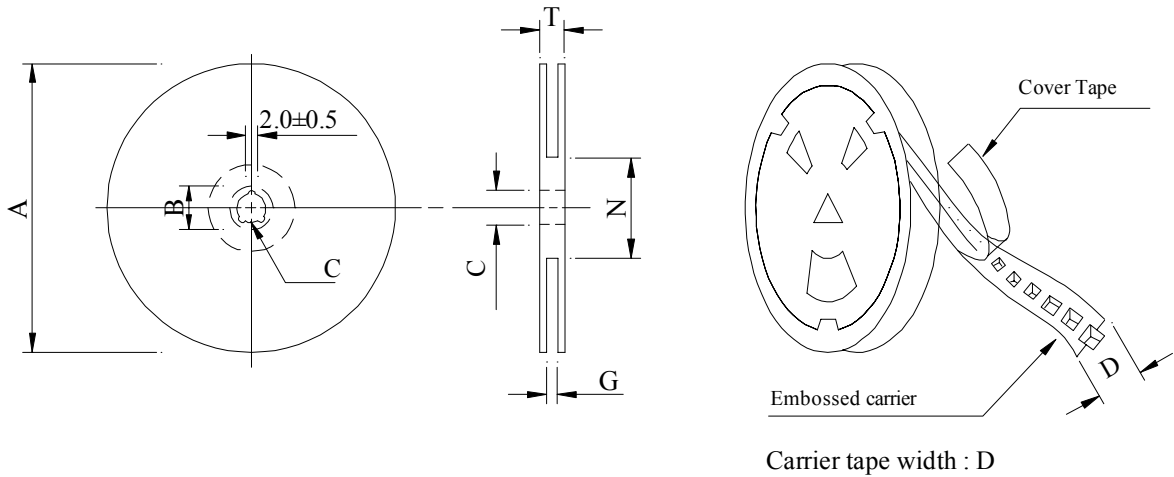
REF : 22071112-A

PAGE: 4

PROD. NAME	SHIELDED SMD POWER INDUCTOR	ABC'S DWG NO.	SV7028□□□□L□-□□□
		ABC'S ITEM NO.	

PACKAGING INFORMATION :

(1) Configuration



(2) Dimensions

Unit:m/m

Style	A	B	C	D	G	N	T
07 - 16	178	21±0.8	13	16	18 ⁺⁰	50 ⁻⁰	20.5
13 - 16	330	21±0.8	13±0.5	16	18 ⁺⁰	50 ⁻⁰	22.4

(3) Q'TY & G.W. Per package

Series	Inner : Reel			Outer : Carton		
	Q'TY (pcs)	G.W. (gw)	Style	Q'TY (pcs)	G.W. (Kg)	Size (cm)
SV7028	400	500	07 - 16	12,000	17.5	42 x 41 x 24
SV7028	1,500	1,950	13 - 16	9,000	13.6	40 x 40 x 24

AR-001A

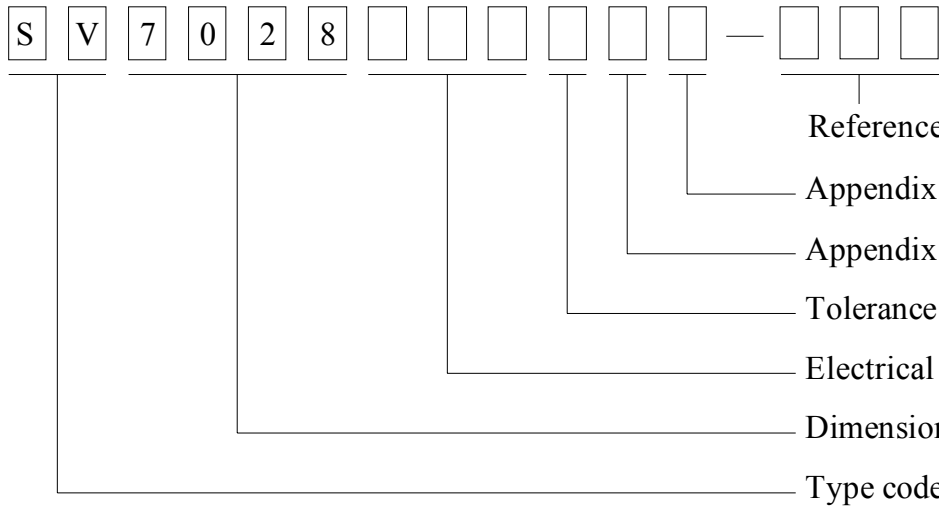
SPECIFICATION FOR APPROVAL

REF : 22071112-A

PAGE: 5

PROD. NAME	SHIELDED SMD POWER INDUCTOR	ABC'S DWG NO.	SV7028□□□□L□-□□□
		ABC'S ITEM NO.	

. DWGING NUMBER EXPRESSION :



Appendix code 1 : Product Classification

L : Lead Free Standard products comply with RoHS' requirements

1 ~ 9 : Lead Free Special products comply with RoHS' requirements

Appendix code 2 : Package Information

Code	Inner package	Inner package Q'TY	Remark
A	T.B.D.	T.B.D.	
B	T / R (Reel package)	400 pcs	
C	T / R (Reel package)	1,500 pcs	

SPECIFICATION FOR APPROVAL

REF : 22071112-A

PAGE: 6

PROD. NAME	SHIELDED SMD POWER INDUCTOR	ABC'S DWG NO.	SV7028□□□□L□-□□□
		ABC'S ITEM NO.	

. RELIABILITY TEST :

Test item	Specification	Test condition						
Solderability	More than 90% of the terminal electrode shall be covered With fresh solder.	Preheat : 150±25 for 60 seconds Solder : Sn96.5 / Ag3 / Cu0.5 or equivalent Solder temp. : 235±5 Flux : Rosin Dip time : 4±1 seconds						
Thermal shock test (Temp. cycle)	Inductance shall not change more than ±20%	<table style="width: 100%; border: none;"> <tr> <td style="text-align: center;">Room temp. 15 minutes</td> <td style="text-align: center;">→</td> <td style="text-align: center;">$\frac{-25\pm 2}{30 \text{ minutes}}$</td> </tr> <tr> <td style="text-align: center;">Room temp. 15 minutes</td> <td style="text-align: center;">→</td> <td style="text-align: center;">$\frac{85\pm 2}{30 \text{ minutes}}$</td> </tr> </table> <p>Total : 50 cycles</p>	Room temp. 15 minutes	→	$\frac{-25\pm 2}{30 \text{ minutes}}$	Room temp. 15 minutes	→	$\frac{85\pm 2}{30 \text{ minutes}}$
Room temp. 15 minutes	→	$\frac{-25\pm 2}{30 \text{ minutes}}$						
Room temp. 15 minutes	→	$\frac{85\pm 2}{30 \text{ minutes}}$						
Humidity Resistance test		Temperature : 40±2 Humidity : 90 ~ 95% Applied current : Per spec. Time : 500 hours						
High temp. Resistance test		Temperature : 105±2 Applied current : Per spec. Time : 500 hours						

AR-001A



SPECIFICATION FOR APPROVAL

REF : 22071112-A

PAGE: 7

PROD.	SHIELDED SMD	ABC'S DWG NO.	SV7028□□□□L□-□□□
NAME	POWER INDUCTOR	ABC'S ITEM NO.	

. UL CARD :

OBMW2 August 27, 1999

Magnet Wire-Component

ELEKTRISOLA (MALAYSLA) SDN BHD E143312

IALAN DAMN SATU IANDA BAIK 28750 BENTONG, PAHANG
DARUL MAKMUR MALAYSIA

Mtl Dsg	Mark Dsg	Coating Type		ANSI Typ	Temp Class
		BC	OC		
Estersol 160	E180	Polyesterimide (solderable)	—	MW-77	180
Amldester 200	A200	Polyesterimide	—	MW-74	200
Polysol-N 155	PN155	Polyurethane	Nylon	MW-80, MW-28	155, 100
Polysol 155	P155	Polyurethane	—	MW-79, MW-79	155, 130
Polysol 155g	Pg155	Polyurethane	—	MW-79	130
Polysol 155p	Pp155,Gp155	Polyurethane	—	MW-79	155
Polysol 160	P160	Polyurethane	—	MW-79	155
Polysol 180	P180	Polyurethane	—	MW-79	155
Polysol 170	P170 or G170	Polyurethane	—	MW-79	156
Polysol-N 180	PN180	Polyurethane	Nylon	—	180

Marking : Company name/material designation or marked designation and factory identification on package ok reel

See General Information preceding These Recognitions
For use only in equipment where the acceptability of the combination is determined by Underwriters Laboratories Inc.

AR-001A

