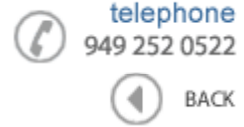




Data Sheet



Product Category: RF SAW Filter

Part Number	Package	Application	Last Modified
803-RF452.5M-A	3.8 x 3.8 SMD	CDMA450 Tx	Jan. 01, 2007

TYPE :
CDMA450, RF-Tx SAW Filter



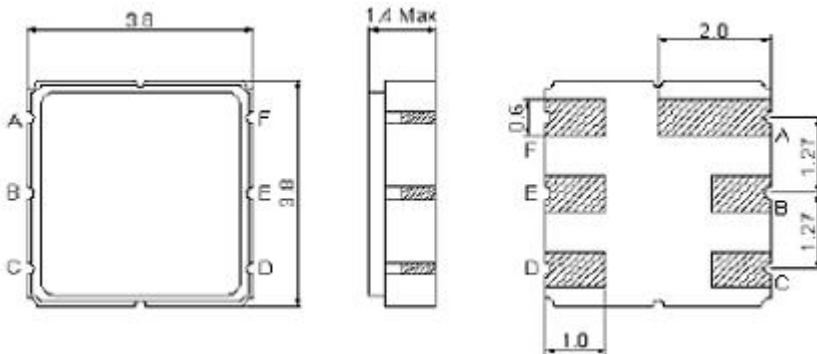
PART NUMBER :
803-RF452.5M-A

OPERATING CONDITIONS / ELECTRICAL CHARACTERISTICS

PARAMETERS	Condition	Minimum	Typical	Maximum	Units
Center Frequency (Fo)	-	-	452.5	-	MHz
Maximum Insertion Loss	450.0 ~ 454.8 MHz	-	1.8	2.8	dB
Stop Band Attenuation:	0.3 ~ 440.0 MHz	25	28	-	dB
	460.0 ~ 465.0 MHz	30	49	-	
	465.0 ~ 1700.0MHz	25	28	-	
	1700.0~ 2000.0 MHz	20	23	-	
Source Impedance (single ended)*	-	-	50	-	ohm
Load Impedance (single ended)*	-	-	50	-	ohm
VSWR	450.0 ~ 454.8 MHz	-	1.4	2.0	-
Maximum Input Power	-	-	-	27	dBm
Operating Temperature	-	-30	-	+80	°C

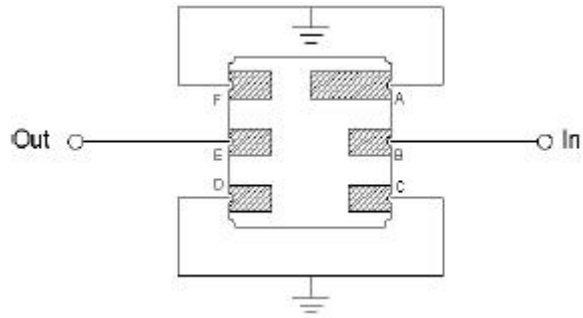
* No Matching Network

PACKAGE OUTLINE (mm)



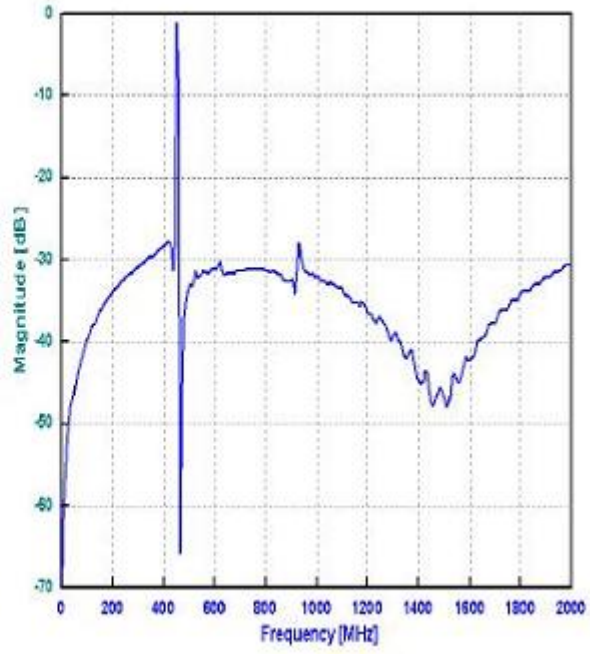
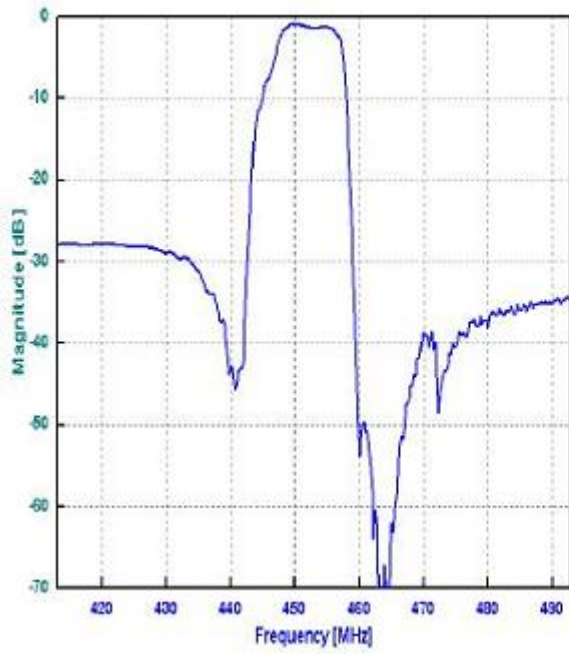
PIN LAYOUT	
A	Ground
B	In
C	Ground
D	Ground
E	Out
F	Ground

TEST FIXTURE

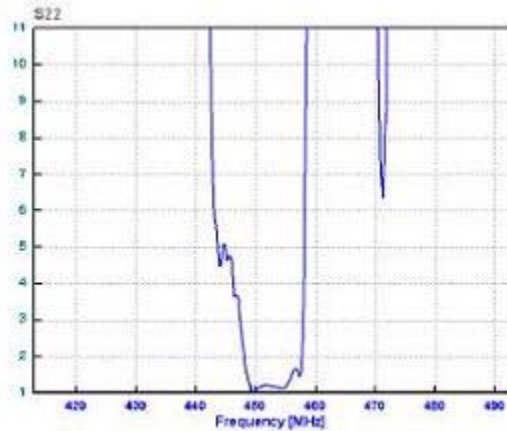
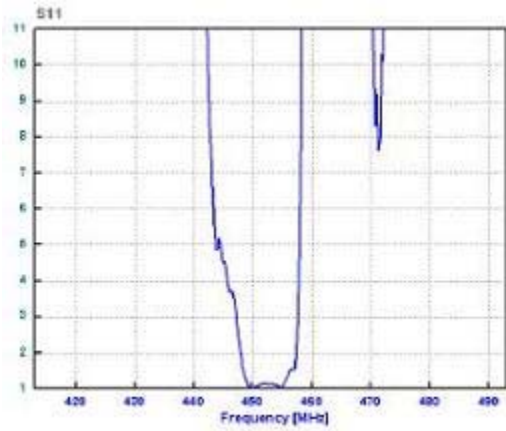


Source/ Load Impedance = 50 ohms

FREQUENCY RESPONSE

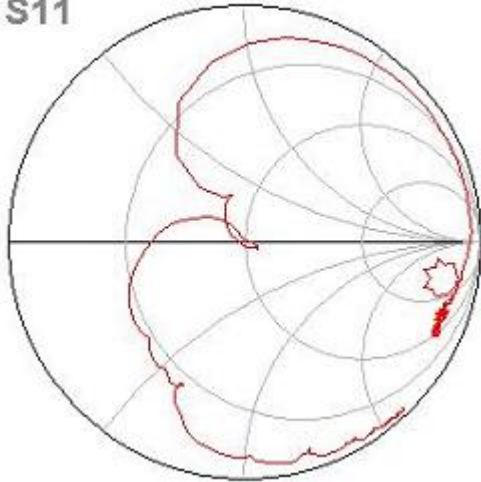


VSWR

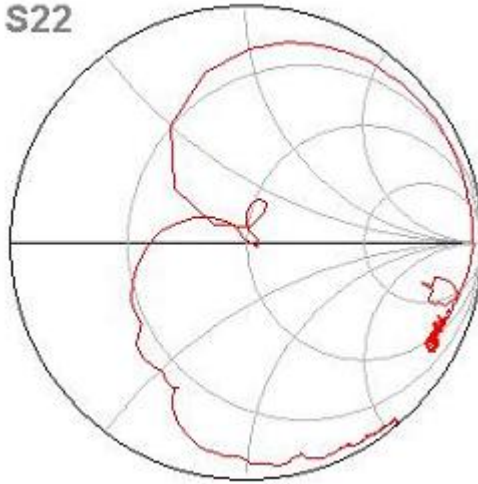


SMITH CHART

S11



S22



Oscilent Corporation - CALL **949.252.0522**

18195 East McDurrnott Street , Building D , Irvine , CA 92614 , USA
Fax: 949.252.0599 . E-Mail: Sales@Oscilent.com

Part No.: 803-RF452.5M-A