



**Data Sheet**



Product Category: RF SAW Filter

Part Number	Package	Application	Last Modified
803-RF453.5M-A	3.8 x 3.8 SMD	CDMA450 Tx	Jan. 01, 2007

TYPE :  
CDMA450, RF-Tx SAW Filter



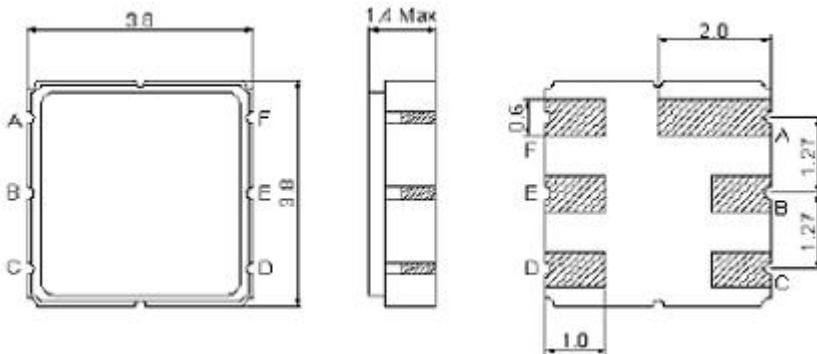
PART NUMBER :  
**803-RF453.5M-A**

**OPERATING CONDITIONS / ELECTRICAL CHARACTERISTICS**

PARAMETERS	Condition	Minimum	Typical	Maximum	Units
Center Frequency (Fo)	-	-	453.5	-	MHz
Maximum Insertion Loss	451.3 ~ 455.8 MHz	-	1.8	2.8	dB
Stop Band Attenuation:	0.3 ~ 440.0 MHz	25	27	-	dB
	461.3 ~ 465.8 MHz	30	47	-	
	465.8 ~ 1700.0MHz	25	28	-	
	1700.0~ 2000.0 MHz	20	28	-	
Source Impedance (single ended)*	-	-	50	-	ohm
Load Impedance (single ended)*	-	-	50	-	ohm
VSWR	451.3 ~ 455.8 MHz	-	1.4	2.0	-
Maximum Input Power	-	-	-	27	dBm
Operating Temperature	-	-30	-	+80	°C

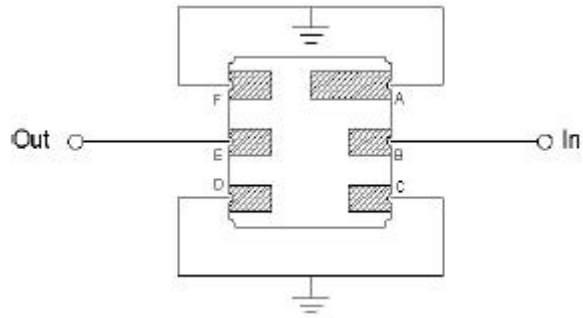
\* No Matching Network

**PACKAGE OUTLINE (mm)**



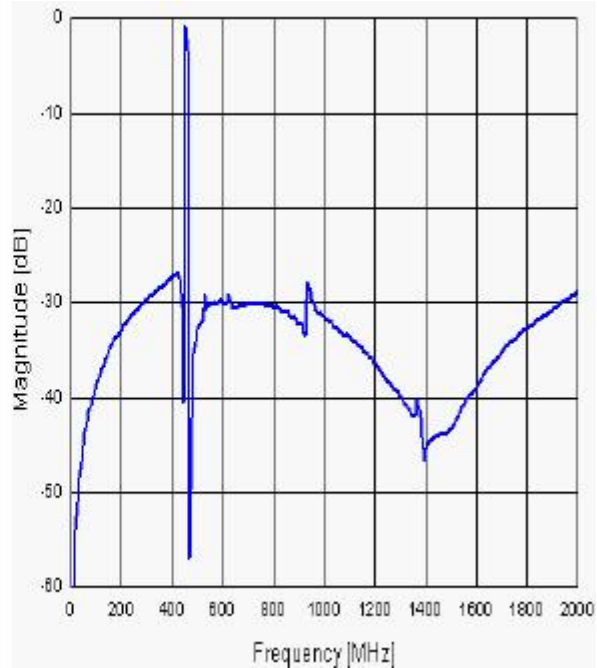
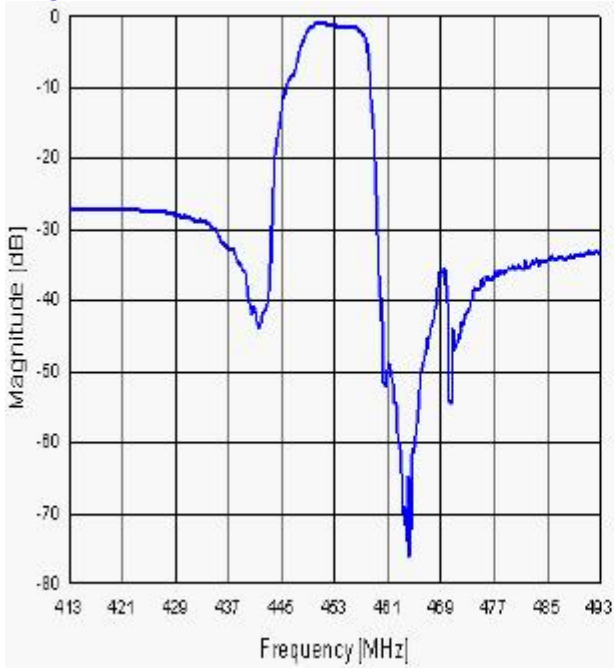
PIN LAYOUT	
A	Ground
B	In
C	Ground
D	Ground
E	Out
F	Ground

**TEST FIXTURE**

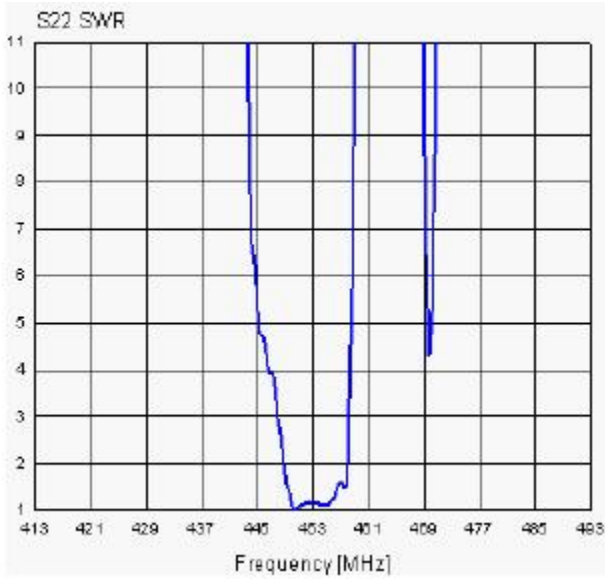
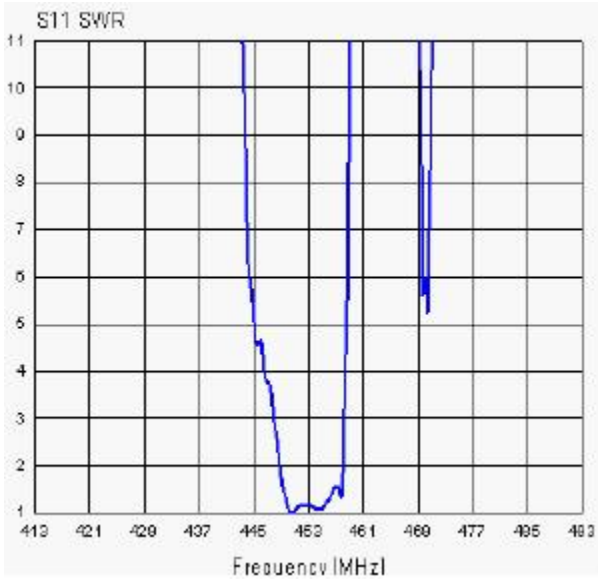


Source/ Load Impedance = 50 ohms

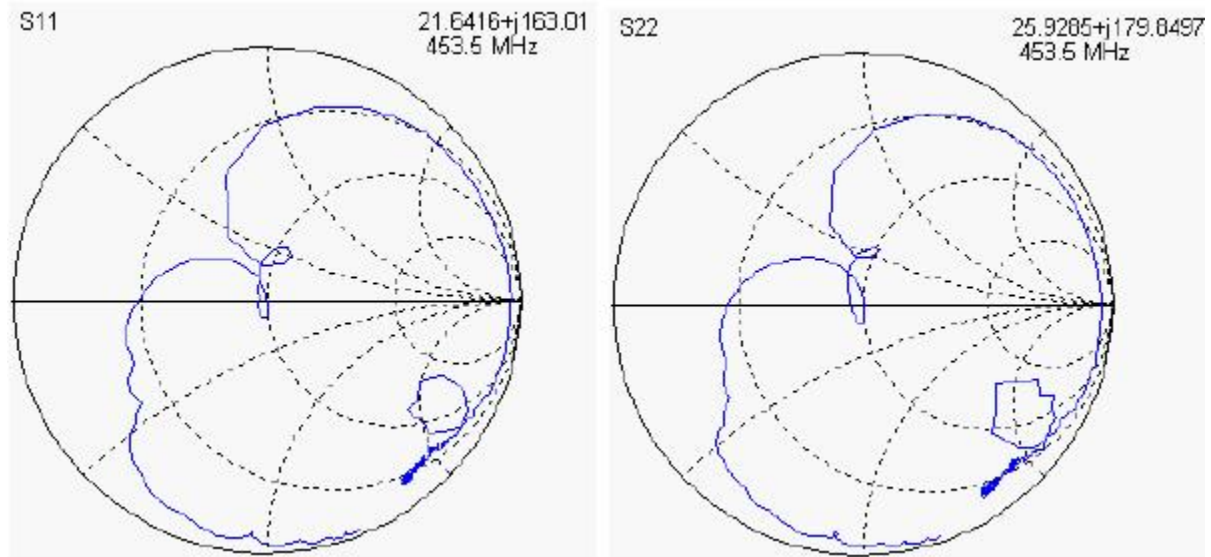
**FREQUENCY RESPONSE**



**VSWR**



**SMITH CHART**



**Oscilent Corporation** - CALL **949.252.0522**

**Part No.:** 803-RF453.5M-A

18195 East McDermott Street , Building D , Irvine , CA 92614 , USA  
Fax: 949.252.0599 , E-Mail: Sales@Oscilent.com