

10K / 10KH ECL Logic Pulse Width Control Modules

- Triggered by the input's rising edge (input pulse width 5 ns, min.), a pulse of specified width will be generated at the output
- High-to-low transitions will not trigger the unit.
- Propagation Delay of 2 ns typ., 4 ns max.
- 10K ECL ECLPWG Series: Designed for output duty-cycle less than 50%.
- 10KH ECL ECLHPW Series: Designed for output duty-cycle less than 65%.

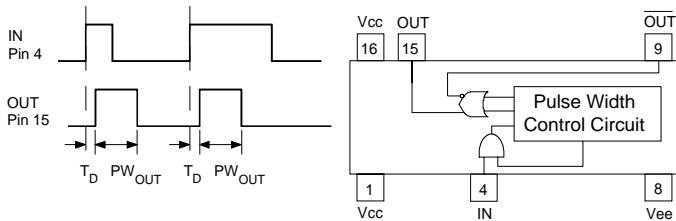
Electrical Specifications at 25°C

| 10K ECL Pulse Width Generator Modules | | |
|---------------------------------------|---------------------|-------------------------|
| Part Number | Maximum Freq. (MHz) | Output Pulse Width (ns) |
| ECLPWG-5 | 77.0 | 5 ± 1.00 |
| ECLPWG-6 | 67.0 | 6 ± 1.00 |
| ECLPWG-7 | 59.0 | 7 ± 1.00 |
| ECLPWG-8 | 53.0 | 8 ± 1.00 |
| ECLPWG-9 | 48.0 | 9 ± 1.00 |
| ECLPWG-10 | 43.0 | 10 ± 1.50 |
| ECLPWG-15 | 31.0 | 15 ± 2.00 |
| ECLPWG-20 | 23.0 | 20 ± 2.00 |
| ECLPWG-25 | 19.0 | 25 ± 2.00 |
| ECLPWG-30 | 15.0 | 30 ± 2.00 |
| ECLPWG-40 | 11.0 | 40 ± 2.00 |
| ECLPWG-50 | 9.0 | 50 ± 2.50 |
| ECLPWG-60 | 8.0 | 60 ± 3.00 |
| ECLPWG-75 | 6.5 | 75 ± 3.75 |
| ECLPWG-100 | 5.0 | 100 ± 5.00 |

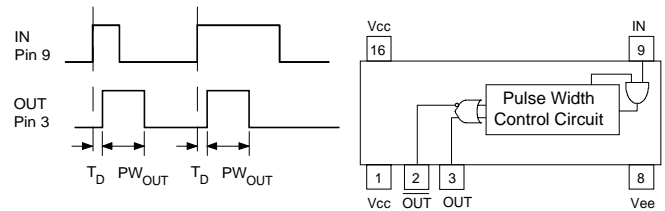
Electrical Specifications at 25°C

| 10KH ECL Pulse Width Generator Modules | | |
|--|---------------------|-------------------------|
| Part Number | Maximum Freq. (MHz) | Output Pulse Width (ns) |
| ECLHPW-5 | 100.0 | 5 ± 1.00 |
| ECLHPW-6 | 98.0 | 6 ± 1.00 |
| ECLHPW-7 | 88.0 | 7 ± 1.00 |
| ECLHPW-8 | 84.0 | 8 ± 1.00 |
| ECLHPW-9 | 68.0 | 9 ± 1.00 |
| ECLHPW-10 | 56.0 | 10 ± 1.50 |
| ECLHPW-15 | 41.0 | 15 ± 2.00 |
| ECLHPW-20 | 30.0 | 20 ± 2.00 |
| ECLHPW-25 | 23.0 | 25 ± 2.00 |
| ECLHPW-30 | 20.0 | 30 ± 2.00 |
| ECLHPW-40 | 15.0 | 40 ± 2.00 |
| ECLHPW-50 | 12.7 | 50 ± 2.50 |
| ECLHPW-60 | 10.6 | 60 ± 3.00 |
| ECLHPW-75 | 8.2 | 75 ± 3.75 |
| ECLHPW-100 | 6.3 | 100 ± 5.00 |

ECLPWG Schematic



ECLHPW Schematic



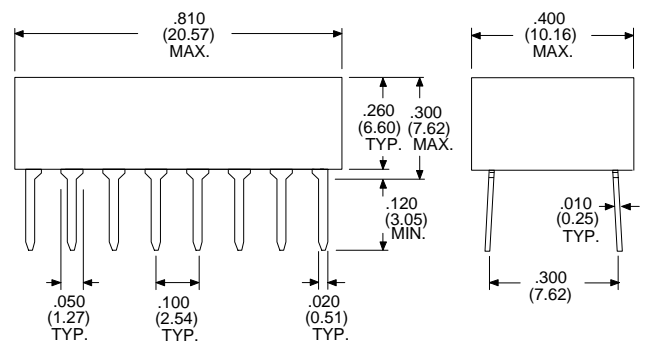
GENERAL: For Operating Specifications and Test Conditions, see Tables IV, V and VII on page 5 of this catalog. Delays specified for the Leading Edge.

Operating Temp. Range, **ECLPWG** -40° to +85°C
 Temperature Coefficient of PW 300ppm/°C typical
 Supply Current, I_{EE}, **ECLPWG** 40 mA typ., 65 mA max.

Operating Temp. Range, **ECLHPW** 0° to +75°C
 Temperature Coefficient of PW 300ppm/°C typical
 Supply Current, I_{EE}, **ECLHPW** 50 mA typ., 75 mA max.

Dimensions in Inches (mm)

16-Pin Package with Unused Leads Removed Per Schematic

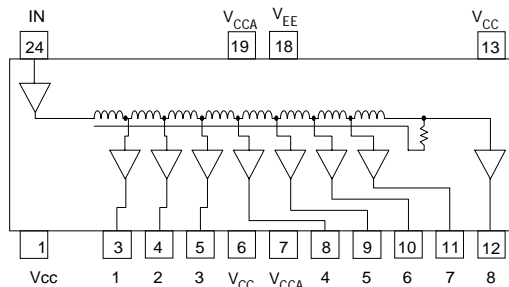


100K ECL Logic Delay Modules

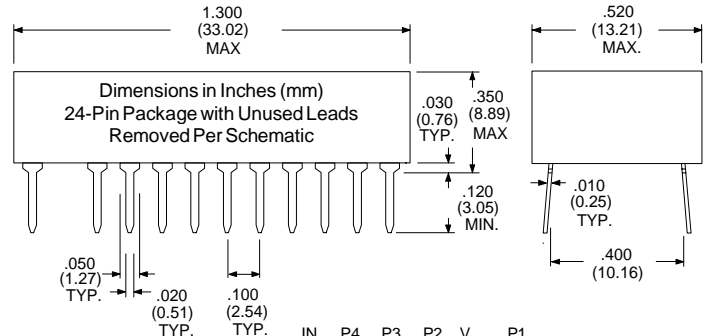
Contact Factory for Data Sheets

- Buffered with 100K Series 300 Logic
- 8 Equal Delay Taps Series: DDECL
- 4-Bit Programmable Series: PPECL2
- Stable Delay vs. Temperature: 300 ppm/°C
- Operating Temperature Range 0°C to +85°C

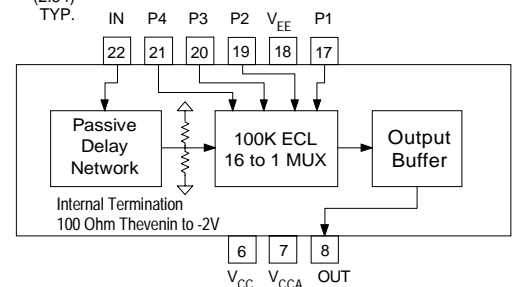
DDECL
8-Tap 100K
Schematic



Dimensions in Inches (mm)
24-Pin Package with Unused Leads
Removed Per Schematic



PPECL2
4-Bit 100K
Schematic



Specifications subject to change without notice.

For other values & Custom Designs, contact factory.

ECLPW 1/98