



Data Sheet



Product Category: RF SAW Filter

| | | | |
|----------------|---------------|-------------|---------------|
| Part Number | Package | Application | Last Modified |
| 805-RF325.3M-A | 5.0 x 5.0 SMD | Wireless | Mar. 10, 2007 |

TYPE :
Wireless, RF SAW Filter



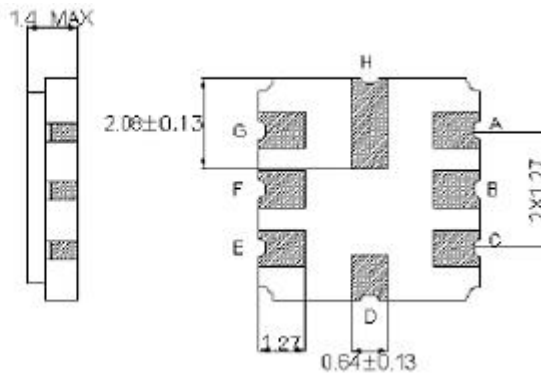
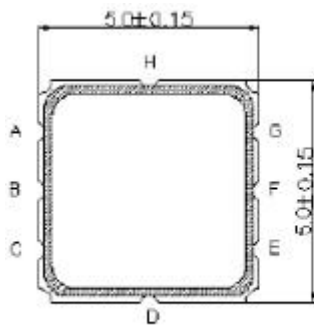
PART NUMBER :
805-RF325.3M-A

OPERATING CONDITIONS / ELECTRICAL CHARACTERISTICS

| PARAMETERS | Condition | Minimum | Typical | Maximum | Units |
|----------------------------------|-----------------------|---------|---------|---------|-------|
| Center Frequency (Fo) | - | - | 325.3 | - | MHz |
| Insertion Loss | 322.0 ~ 328.6 MHz | - | 2.5 | 3.5 | dB |
| Stop Band Attenuation: | Fo-100.0 ~Fo-39.5 MHz | 40 | 50 | - | dB |
| | Fo+39.5 ~F+100.0 MHz | 50 | 60 | - | |
| Ripple in | 322.0 ~ 328.6 MHz- | - | 0.8 | 1.5 | MHz |
| Source Impedance (single ended)* | - | - | 150 | - | ohm |
| Load Impedance (single ended)* | - | - | 150 | - | ohm |
| DC Voltage | - | - | - | 10 | V |
| Maximum Input Power | - | - | - | 0 | dBm |
| Operating Temperature | - | -10 | - | +60 | °C |

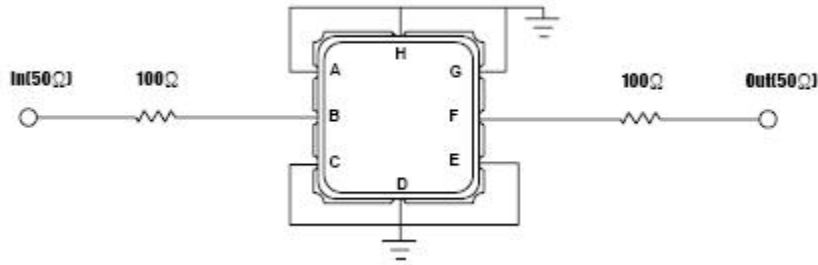
* With Matching Network (Ref. Testing Environment Circuit as shown)

PACKAGE OUTLINE (mm)

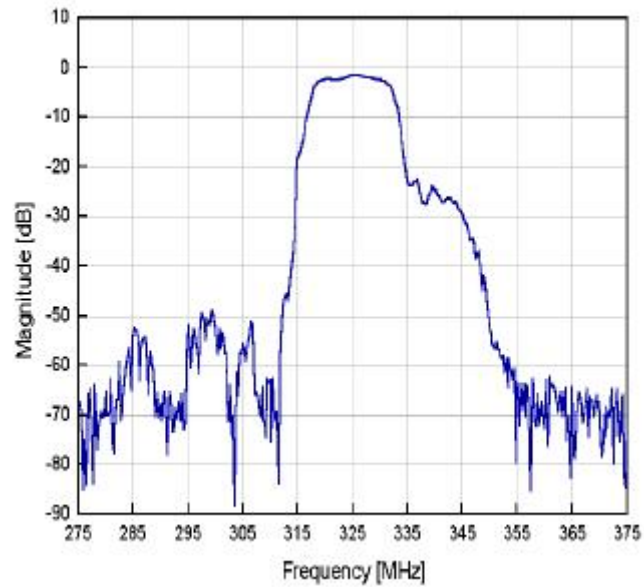


| PIN LAYOUT | |
|------------|--------|
| A | Ground |
| B | In |
| C | Ground |
| D | Ground |
| E | Ground |
| F | Out |
| G | Ground |
| H | Ground |

TEST FIXTURE



FREQUENCY RESPONSE



Oscilent Corporation - CALL **949.252.0522**

Part No.: 805-RF325.3M-A

18195 East McDermott Street, Building D, Irvine, CA 92614, USA
Fax: 949.252.0599, E-Mail: Sales@Oscilent.com