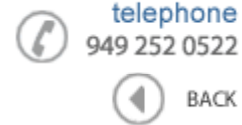


**Data Sheet**

Product Category: IF SAW Filter

Part Number	Package	Application	Last Modified
821-IF65.0M-H	20 x9.8 SMD	65.0 MHz IF SAW Filter	Jan. 01 2007

TYPE :

65.0 MHz IF SAW Filter

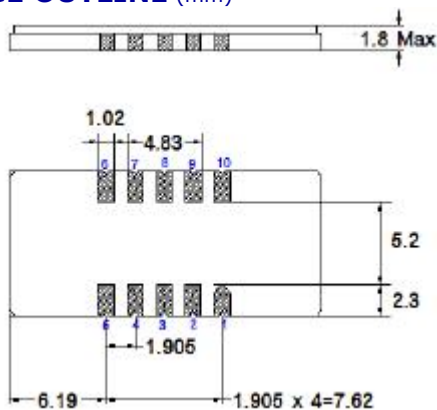
PART NUMBER :

**821-IF65.0M-H****OPERATING CONDITIONS / ELECTRICAL CHARACTERISTICS**

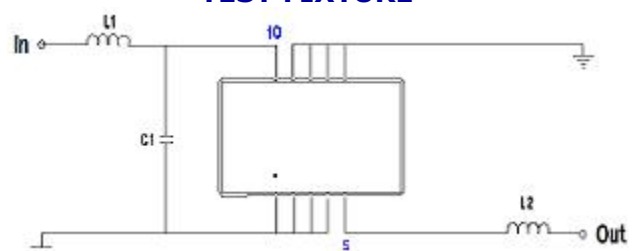
PARAMETERS	Minimum	Typical	Maximum	Units
Center Frequency (Fo)	-	65.0	-	MHz
Insertion Loss	-	18.5	20.5	dB
Source Impedance (single ended)*	-	50	-	ohm
Load Impedance (single ended)*	-	50	-	ohm
Temperature Coefficient	-	-72	-	ppm/C
Amplitude Ripple within fo+/-9.75Mhz	-	0.65	1.0	dBp-p
1dB Bandwidth	9.8	10.00	-	MHz
3dB Bandwidth	10.3	10.52	-	MHz
40dB Bandwidth	-	12.63	12.8	MHz
50dB Bandwidth	-	12.82	13.0	dB
Attenuation Rejection	50	55	-	dB
Absolute Delay at Fo	-	1.67	-	µsec
Group Delay Variation	-	45	100	nsec

\*With Matching Network (Ref. Testing Environment Circuit as shown below). Those impedances could be modified with different impedance values and/or structures, if necessary.

\*\* Custom SAW IF Filters available. Contact Oscilent for assistance.

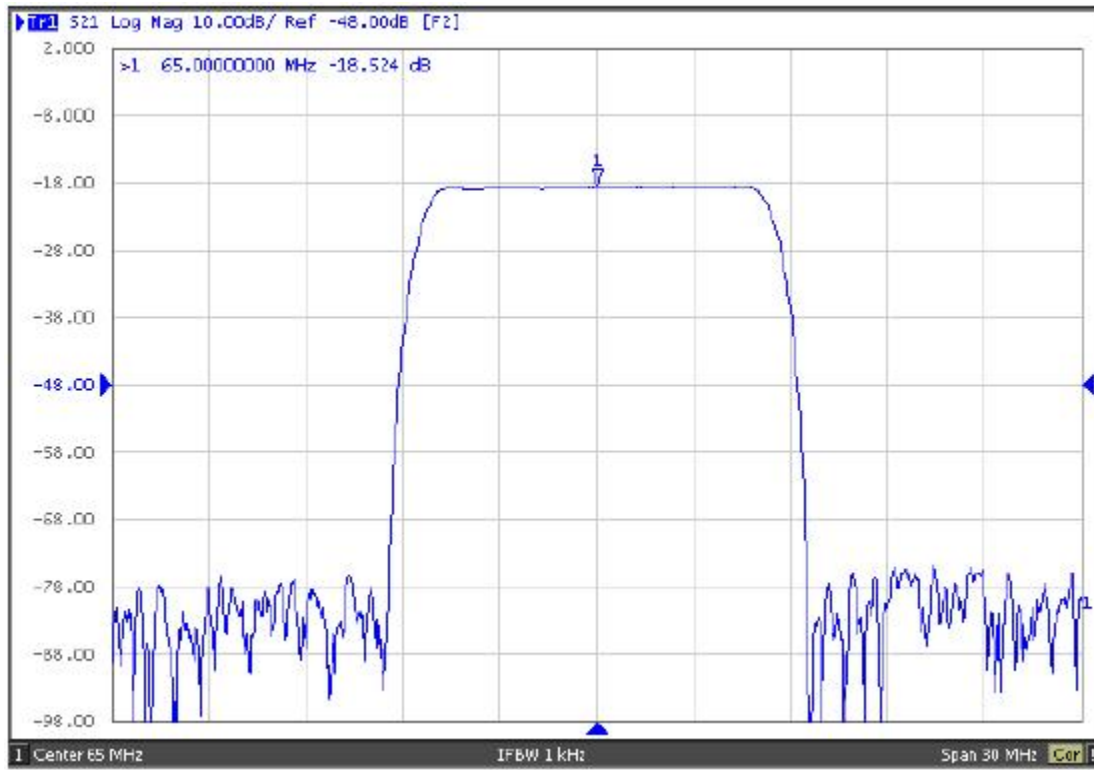
**PACKAGE OUTLINE (mm)**

Pin Descriptions: IN-10, OUT-5, GROUND- 1,2,3,4,6,7,8,9

**TEST FIXTURE**

L1 = 68nH      L2 = 120nH  
 C1 = 24pF      -  
 Source/Load Impedance = 50 ohms

**FREQUENCY RESPONSE**



**Oscilent Corporation** - CALL **949.252.0522**

**Part No.:** 821-IF65.0M-H

18195 East McDermott Street, Building D, Irvine, CA 92614, USA  
Fax: 949.252.0599, E-Mail: Sales@Oscilent.com