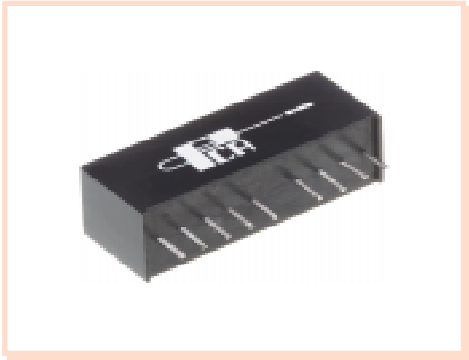


10 Base-T Interface Module for PCI BUS Applications

EPE6273



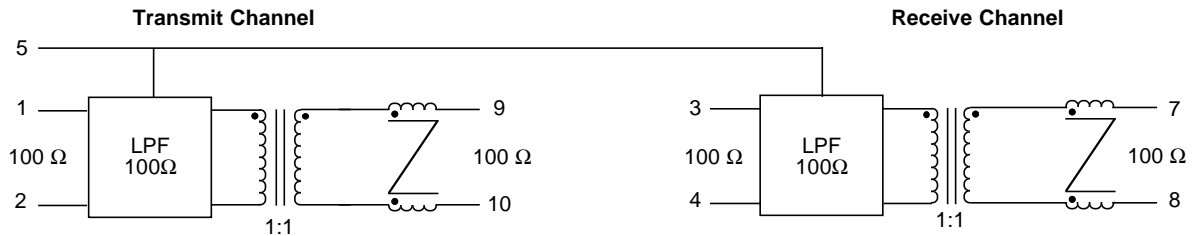
- Recommended for use with AM 79C981 Chipset •
- Complies with or exceeds IEEE 802.3, 10 Base-T Requirements •

Electrical Parameters @ 25° C

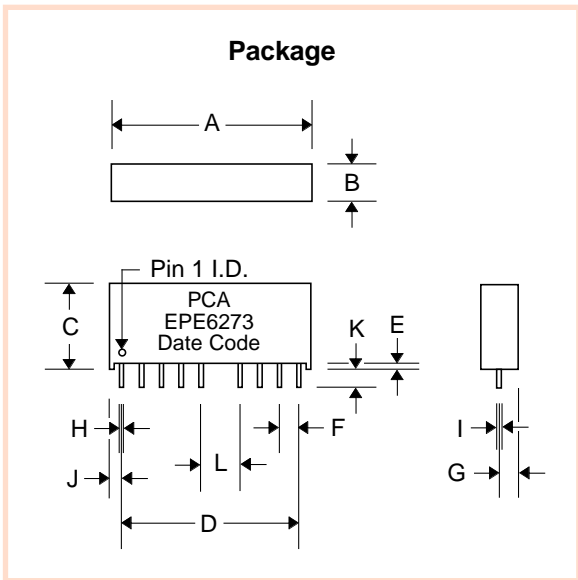
Cut-off Frequency (MHz)		Insertion Loss (dB Max.)		Return Loss (dB Min.)		Attenuation (dB Min.)								Common Mode Rejection (dB Min.)				Crosstalk (dB Min.)			
± 1.0 MHz		1-10 MHz		5-10 MHz		@ 20 MHz		@ 25 MHz		@ 30 MHz		@ 40 MHz		@ 50 MHz		@ 100 MHz		@ 200 MHz		@ 1-10 MHz	
Xmit	Rcv	Xmit	Rcv	Xmit	Rcv	Xmit	Rcv	Xmit	Rcv	Xmit	Rcv	Xmit	Rcv	Xmit	Rcv	Xmit	Rcv	Xmit	Rcv	Xmit	Rcv
17	17	-1	-1	-15	-15	-7	-5	-18	-11	-30	-18	-35	-26	-30	-30	-30	-30	---	---	-31	-31

- **Isolation** : meets or exceeds 802.3 IEEE Requirements •
- **Characteristic Filter Impedance** : 100 Ω •
- Referenced to @ 5 MHz •

Schematic



Package



Dimensions

Dim.	(Inches)			(Millimeters)		
	Min.	Max.	Nom.	Min.	Max.	Nom.
A	1.03	1.05		26.16	26.67	
B	.180	.200		4.57	5.08	
C	.420	.440		10.67	11.18	
D	.900	Typ.		22.86	Typ.	
E	.020	Typ.		.508	Typ.	
F	.100	Typ.		2.54	Typ.	
G	.095	Typ.		2.41	Typ.	
H	.016	.022		.406	.559	
I	.008	.028		.203	.711	
J	.070	Typ.		1.78	Typ.	
K	.125	.145		3.18	3.68	
L	.200	Typ.		5.08	Typ.	