

APPLIED CONCEPTS INC.

397 Route 281 - P.O. BOX 453
Tully, New York 13159-0453
Phone: (315) 696-6676 Fax: (315) 696-9923
www.acipower.com

AC5-12-1086

PRODUCT DATA SHEET

CCFL INVERTER

(For Multiple Tube Applications)

11/30/99

The AC5-12-1086 is designed to power 4 CCFL's to a nominal power level of 18 watts.

Enable control is accomplished at pin 3 of CON1 (0V=off, 5V=on).

Intensity control (0-100%) is accomplished by the user providing an active-low(CMOS) signal to the up-button or down-button control pins of CON1

All outputs are open and short circuit protected.

Meets the nominal CCFL drive requirements for the Sharp LQ181E1DG11 Display.

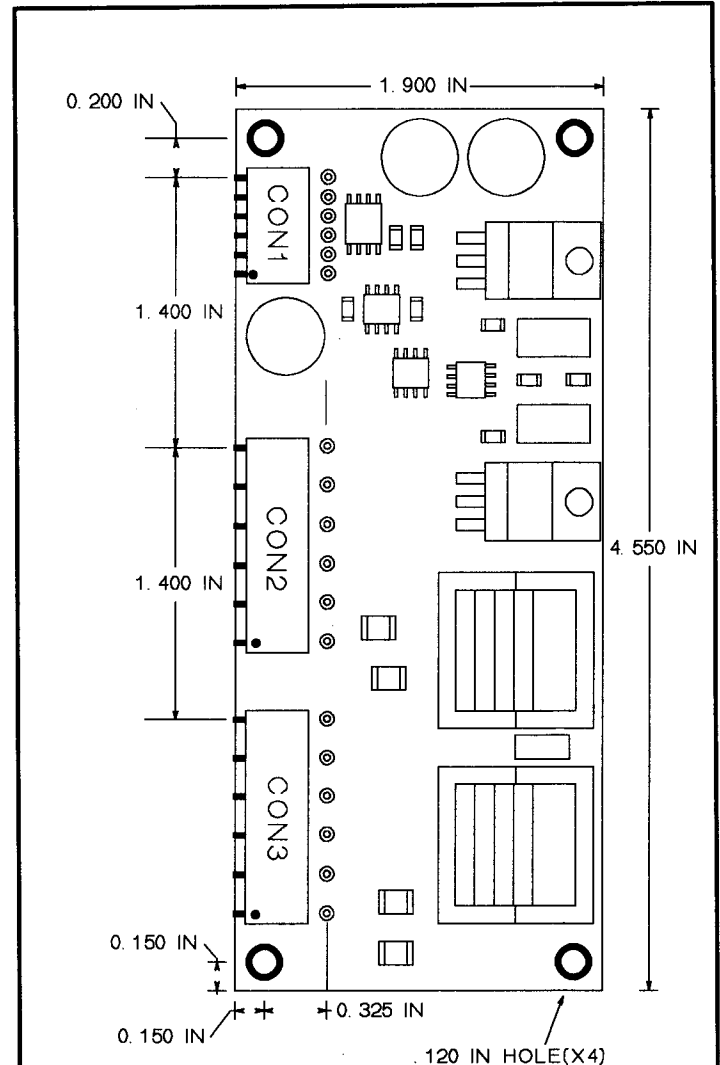
Specifications:

- Vin = +12V +/- 10%
- CCFL strike voltage = 1800Vrms @ Vin=12V
- CCFL tube current = 6.0mA/tube @ 100% intensity/Vin=12V)
- Recommended CCFL sustaining voltage = 625Vrms - 825Vrms
- Nominal tube current frequency = 42khz +/- 10%
- Nominal pwm frequency = 98Hz +/- 3%
- Pwm duty cycle range = 0 to 100%
- Average electrical efficiency >90%
- External PWM signal input control via enable pin
- Output PWM sync signal @ pin 6 of CON1 (for master/slave operation).

Additional control capability:*

- Supports multiple units ie:Master/Slave(s)
- Synchronization to display frame-rate
- Low power sleep-mode and soft-start
- UL 1950 Recognized

* Please contact factory for information



PROFILE = .560 IN

CON1 MOLEX 22-28-1060		CON2(CON3) MOLEX 22-28-1110	
PIN #		PIN #	
1	+12V	1	CCFL 1(3)
2	GND	2	NC
3	ENABLE	3	CCFL 2(4)
4	UP-BUTTON	4	NC
5	DOWN BUTTON	5	NC
6	PWM OUT	6	NC
		7	NC
		8	NC
		9	NC
		10	NC
		11	CCFL COMMON