

## GENERAL DESCRIPTION

The AL1213A is a CMOS 8-bit D/A converter for general application. This digital to analog converter consists of a R-2R ladder block & an Op amp block. Its maximum conversion rate is 0.5MSPS.

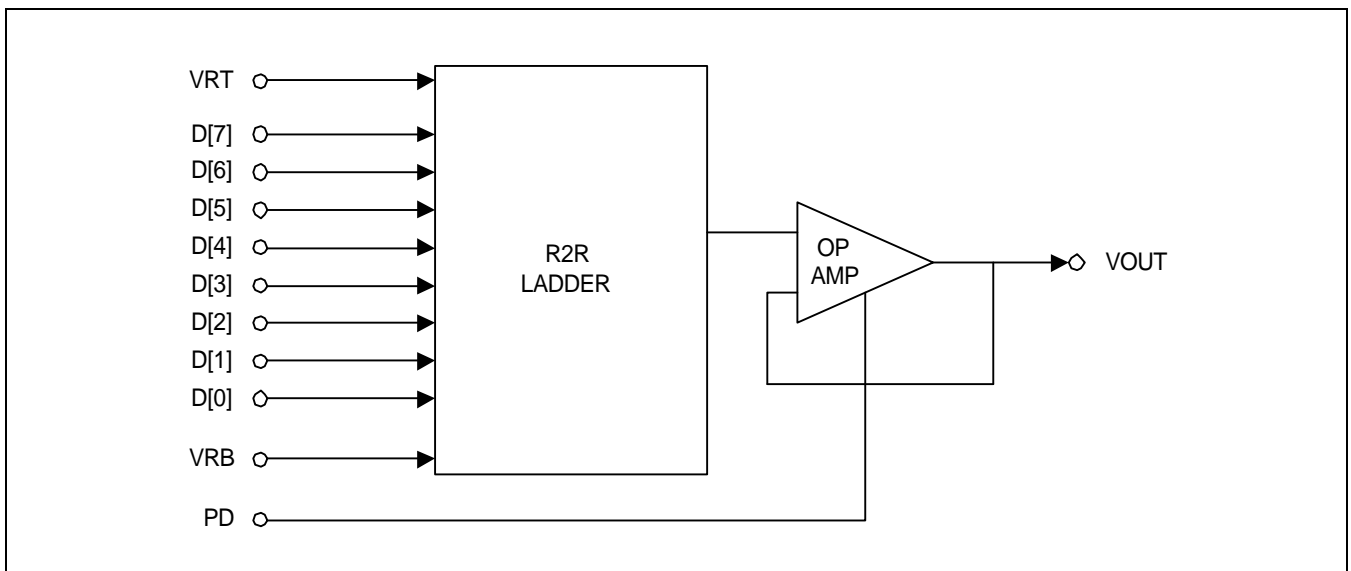
## FEATURES

- Resolution : 8-bit
- Differential Linearity Error :  $\pm 0.4$  LSB (TYP)
- Maximum Conversion Rate : 0.5MSPS
- Supply Voltage : 5V
- External Voltage Reference
- Single Voltage Output : 0V to 5V
- Operation Temperature Range : 0 to 70°C

## TYPICAL APPLICATIONS

- DVD
- CDP
- General purpose Digital to Analog Conversion

## FUNCTIONAL BLOCK DIAGRAM



Rev 2.1 (Apr. 2002)

No responsibility is assumed by SEC for its use nor for any infringements of patents or other rights of third parties that may result from its use. The content of this datasheet is subject to change without any notice.

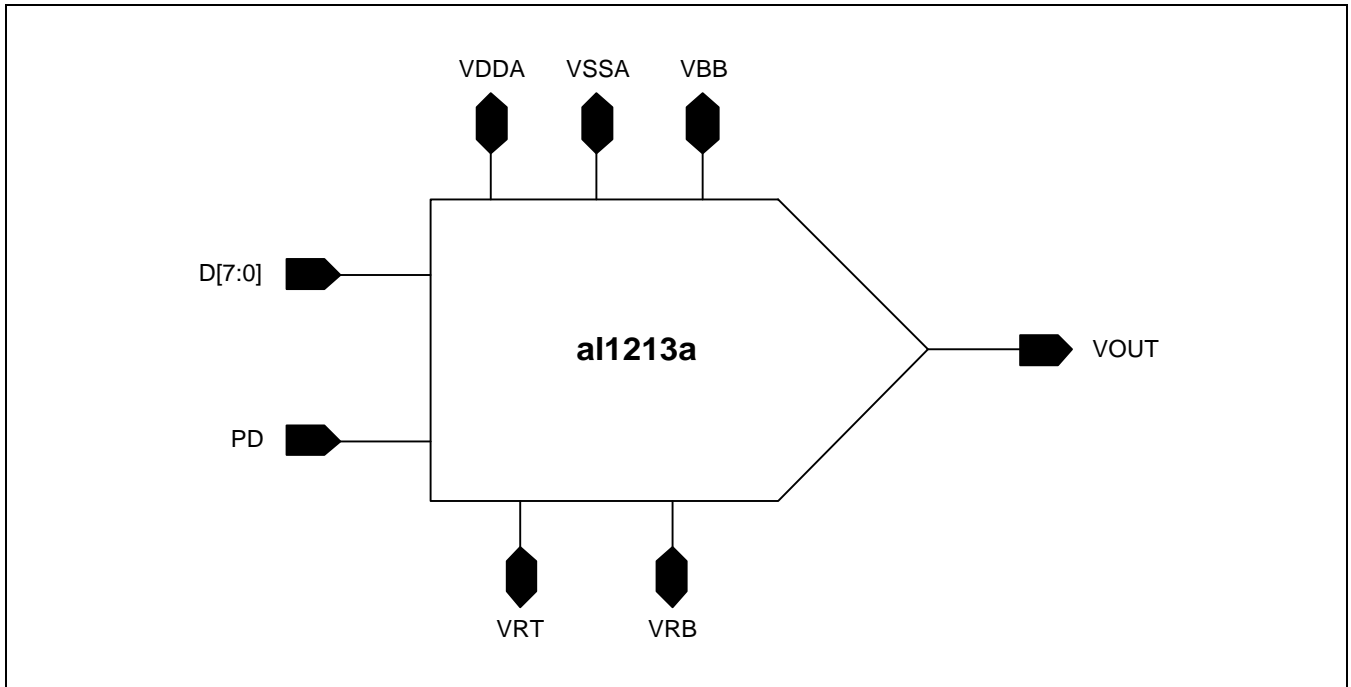
## CORE PIN DESCRIPTION

Name	I/O Type	I/O Pad	Pin Description
DI0 ~ DI7	DI	picc_bb	Digital Input Data
VRB	AI	pia_bb	Voltage Reference Bottom (0V)
VRT	AI	pia_bb	Voltage Reference Top (5V)
AOUT	AO	poa_bb	Analog Voltage Output
VDDA	AP	vdda	Analog Power
VSSA	AG	vssa	Analog Ground
VBB	AG	vbb	Analog Ground

### I/O TYPE ABBR

- AI : Analog Input
- DI : Digital Input
- AO : Analog Output
- DO : Digital Output
- AP : Analog Power
- AG : Analog Ground
- AB : Analog bi-direction port
- DB : Digital Bidirection port
- DP : Digital Power
- DG : Digital Ground
- DB : Digital Sub Bias

## CORE CONFIGURATION



## ABSOLUTE MAXIMUM RATINGS

Characteristics	Symbol	Typ	Unit
Supply Voltage	VDDA	5	V
Reference Input Voltage	VRT	5.0	V
	VRB	0.0	V
Digital Input Voltage	V <sub>inh</sub>	5.0	V
	V <sub>inl</sub>	0.0	V
Operating Temperature	Top	0 to 70	°C

### NOTES :

- ABSOLUTE MAXIMUM RATING specifies the values beyond which the device may be damaged permanently. Exposure to ABSOLUTE MAXIMUM RATINGS conditions for extended periods may affect reliability. Each condition value is applied with the other values kept within the following operating conditions and function operation under any of these conditions not implied.
- All voltages are measured with respect to VSSA, VDDD unless otherwise specified.

**RECOMMENDED OPERATING CONDITIONS**

Characteristics	Symbol	Min	Typ	Max	Unit
Supply Voltage	VDDA	4.75	5.0	5.25	V
Reference Input Voltage	VRT	-	5.0	-	V
	VRB	-	0.0	-	V
Digital Input Voltage HIGH	Vinh	0.7 VDDD	-	-	V
LOW	Vinl	-	-	0.3 VDDD	V
Operating Temperature	Top	0	-	70	°C

**NOTE:** It is strongly recommended that to avoid power latch-up all the supply pins (VDDA, VDDD) be driven from the same source.

**DC ELECTRICAL CHARACTERISTICS**

(Converter Specifications : VDDA = 5V, VSSA = VBB = 0V, Top = 25°C, VRT = 5.0V, VRB = 0.0V Cload = 2pF unless otherwise specified.)

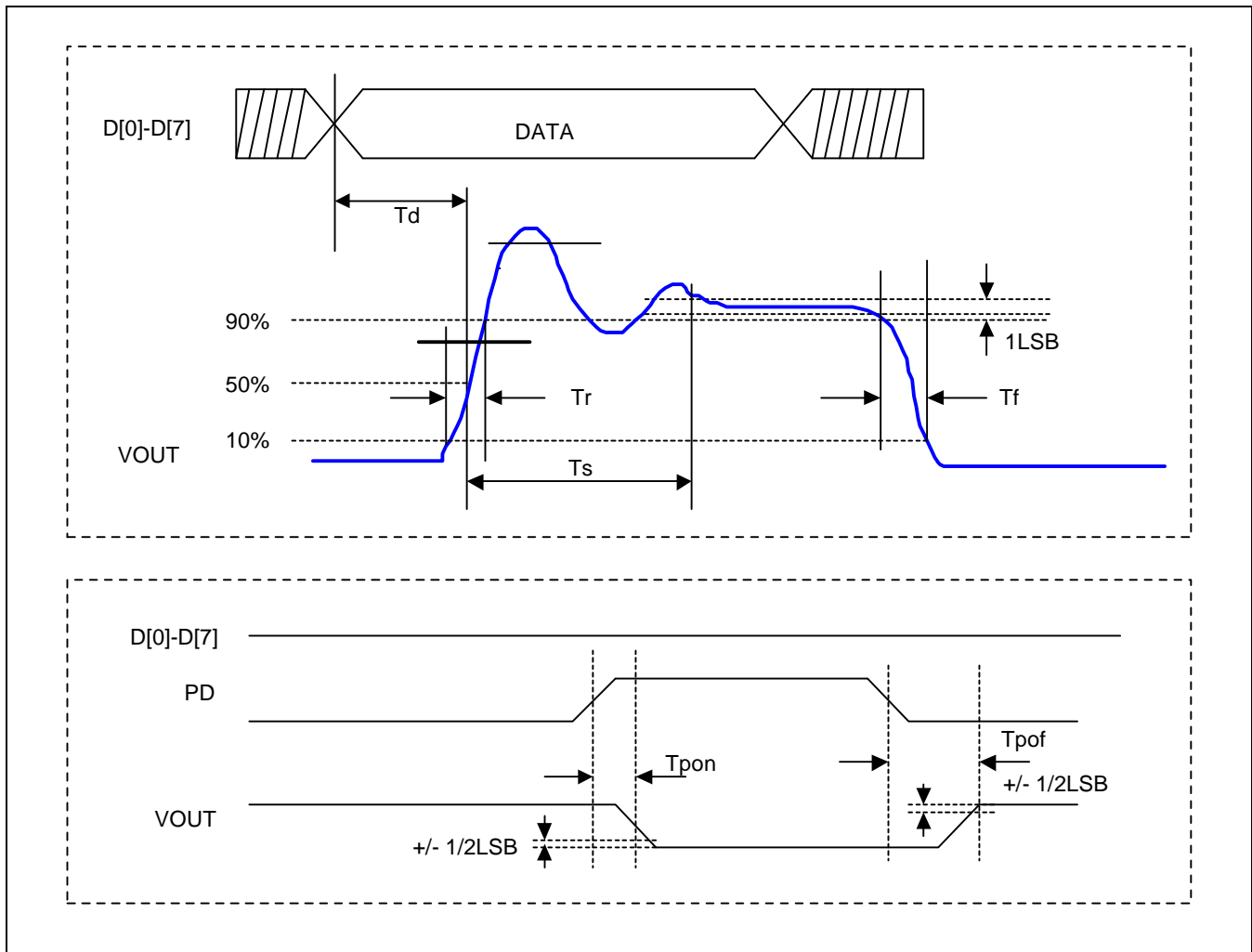
Characteristics	Symbol	Min	Typ	Max	Unit
Resolution	-	-	8	-	Bits
Differential Linearity Error	DLE	-	0.4	± 1	LSB
Integral Linearity Error	ILE	-	0.8	± 1	LSB
Maximum Output Voltage	-	4.75	5	5.25	V
LSB Size	-	19.0	19.5	20	mV

## AC ELECTRICAL CHARACTERISTICS

(Converter Specifications : VDDA = 5V, VSSA = VBB = 0V, Top = 25°C, VRT = 5.0V, VRB = 0.0V Cload = 2pF unless otherwise specified.)

Characteristics	Symbol	Min	Typ	Max	Unit	Test Conditions
Conversion Rate	fc	-	0.5	-	MSPS	data = 0.5MHz
Dynamic Supply Current	Ivdd	1.5	2.3	7.0	mA	fc = 0.5MHz (load cap = 25pF)
Analog Output Delay	Td	-	190	270	ns	fc = 0.5MHz Data : All High
Analog Output Rise Time	Tr	-	230	300	ns	fc = 0.5MHz Data : All Low → All High
Analog Output Fall Time	Tf	-	230	300	ns	fc = 0.5MHz Data : All High → All Low
Center Code Rising Time	Trd	-	0.3	0.4	ms	fc = 0.5MHz Data : 01111111 → 10000000
Power down on time	Tpon	-	30	-	ns	Data : 11111111
Power down off time	Tpof	-	240	-	ns	Data : 11111111
Power down current	Ipd	-	4	50	nA	Data : 11111111 PD : 0V

## TIMING DIAGRAM

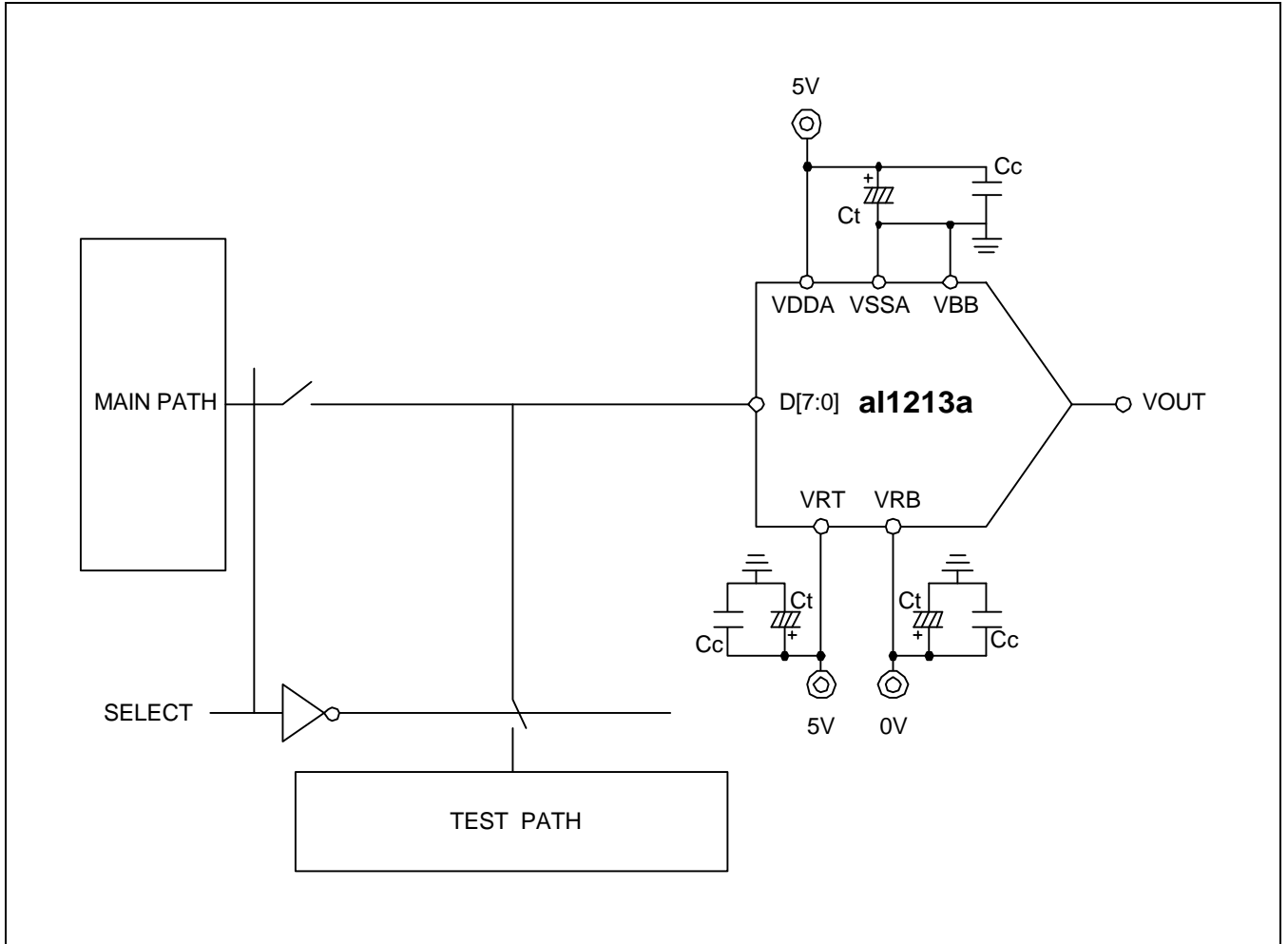


1. Output delay measured from the 50% point of the rising edge of input data to the full scale transition.
2. Settling time measured from the 50% point of full scale transition to the output remaining within  $\pm 1/2$  LSB.
3. Output rise/fall time measured between the 10% and 90% points of full scale transition.

## FUNCTION DESCRIPTION

1. The AL1213A has a R-2R Ladder Block for 8bit and an Opamp Block for driving Output.
2. The R-2R Ladder Block generates binary weighted voltage ( $V_{RT}/2^1$   $V_{RT}/2^2$   $V_{RT}/2^3$  . . .  $V_{RT}/2^n$ ) corresponding to Digital Input Data for n-bit DAC and Output total voltage is summing of each values.
3. In Output voltage,  $MSB = V_{RT}/2^1$   $LSB = V_{RT}/2^n$
4. Output of the R2R Ladder Block is driven by Opamp

CORE EVALUATION GUIDE



Location	Description
Ct	10mF TANTALUM CAPACITOR
Cc	0.1mF CERAMIC CAPACITOR

## TESTABILITY

Whether you use MUX or the internal logic for testability, it is required to be able to select the values of digital inputs (D[0] ~ D[7]). See above figure. Only if it is, you can check the main function (Linearity)

## PHANTOM CELL INFORMATION

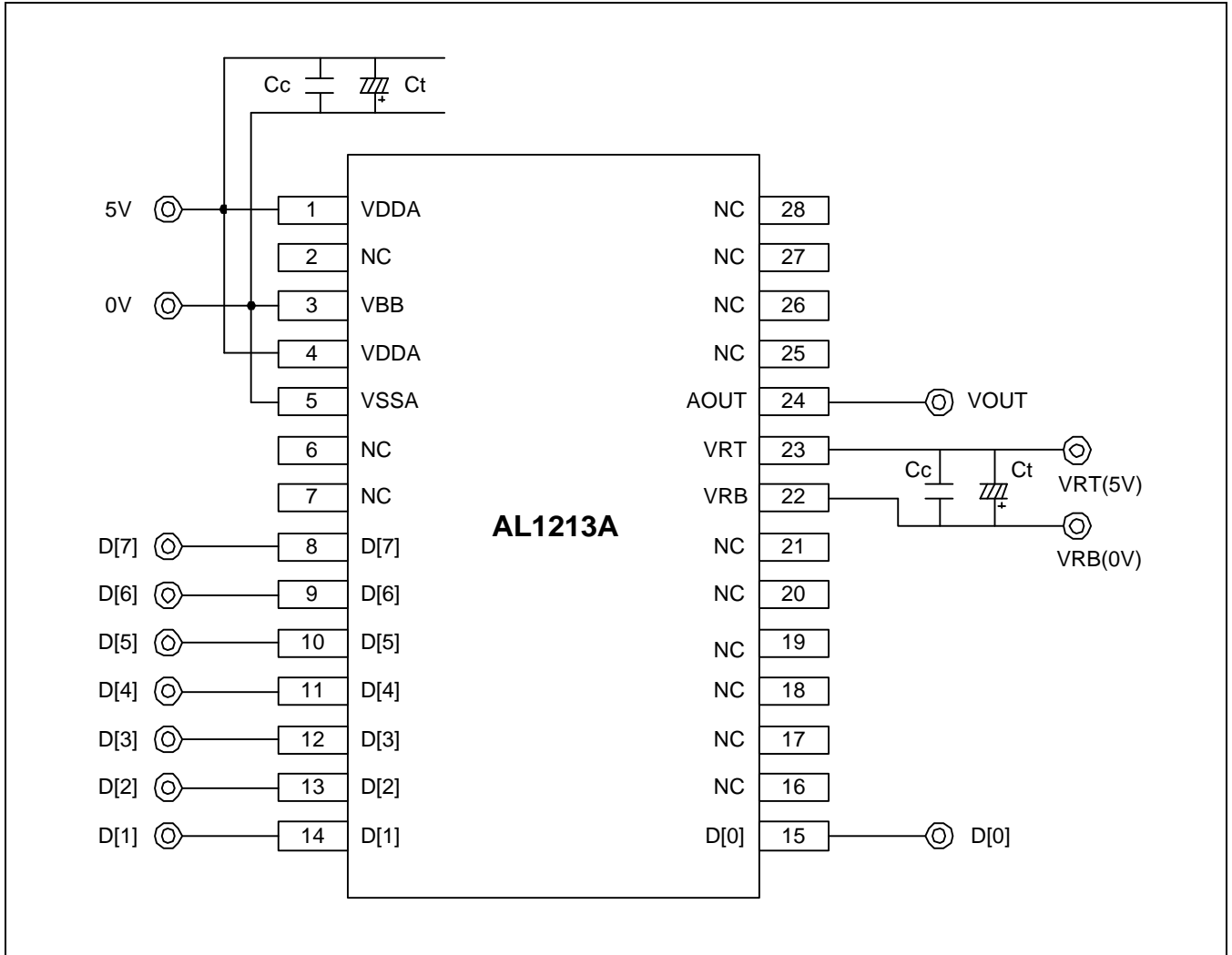


Pin Name	Property	Pin Usage	Pin Layout Guide
D[7:0]	DI	Internal / External	1. Digital Input Signal lines must have same length to reduce propagation delay.
PD	DI	Internal / External	
VRT	AB	Internal / External	1. Voltage reference lines (VRT / VRB) must be wide metal to reduce voltage drop of metal lines 2. VOUT signal should not be crossed by any signals and should not run next to digital signals to minimize capacitive coupling between the two signals.
VRB	AB	Internal / External	
VOUT	AO	Internal / External	1. It is recommended that you use thick analog power metal. When connected to PAD, the path should be kept as short as possible.
VDDA	AP	External	
VSSA	AG	External	
VBB	AG	External	

1. When the core block is connected to other blocks, it must be double guard-ring using N-well and P+ active to remove the substrate and coupling noise.  
In that case, the power metal should be connected to PAD directly.
2. The Bulk power is used to reduce the influence of substrate noise.



**PACKAGE CONFIGURATION**



Location	Description
Ct	10mF TANTALUM CAPACITOR
Cc	0.1mF CERAMIC CAPACITOR
L1,L2	FERRITE BEAD ( 0.1mh )

## PACKAGE PIN DESCRIPTION

Name	Pin No	I/O Type	Pin Description
VDDA	1,4	AP	Analog Power
VBB	3	AG	Analog Ground
VSSA	5	AG	Analog Ground
DI0 ~ DI7	8 ~ 15	DI	Digital Input Data
VRB	22	AI	Voltage Reference Bottom (0V)
VRT	23	AI	Voltage Reference Top (5V)
AOUT	24	AO	Analog Voltage Output
NC	2,6,7,16,17,18 19,20,21,25,26 27,28	DO	No Connection

## PC BOARD LAYOUT CONSIDERATIONS

### PC Board Considerations

To minimize noise on the power lines and the ground lines, the digital inputs need to be shielded and decoupled. This trace length between groups of VDD (VDDA, VDDD) and VSS (VSSA, VSSD) pins should be as short as possible so as to minimize inductive ringing.

### Supply Decoupling and Planes

For the decoupling capacitor between the power line and the ground line, 0.1mF ceramic capacitor is used in parallel with a 10mF tantalum capacitor. The digital power plane (VDDD) and analog power plane (VDDA) are connected through a ferrite bead, and also the digital ground plane (VSSD) and the analog

ground plane (VSSA). This ferrite bead should be located within 3inches of the AL1213A. The analog power plane supplies power to the AL1213A of the analog output pin and related devices.

## FEEDBACK REQUEST

We appreciate your interest in our products. If you have further questions, please specify in the attached form. Thank you very much.

### DC/AC Electrical Characteristic

Characteristics	Min	Typ	Max	Unit	Remarks
Supply Voltage				V	
Power dissipation				mW	
Resolution				Bits	
Analog Output Voltage				V	
Operating Temperature				°C	
Output Load Capacitor				pF	
Output Load Resistor				Ω	
Integral Non-Linearity Error				LSB	
Differential Non-Linearity Error				LSB	
Maximum Conversion Rate				MHz	

### Voltage Output DAC

Characteristics	Min	Typ	Max	Unit	Remarks
Reference Voltage TOP BOTTOM				V	
Analog Output Voltage Range				V	
Digital Input Format	Binary Code or 2's Complement Code				

### Current Output DAC

Characteristics	Min	Typ	Max	Unit	Remarks
Analog Output Maximum Current				mA	
Analog Output Maximum Signal Frequency				MHz	
Reference Voltage				V	
External Resistor for Current Setting (RSET)				Ω	
Pipeline Delay				sec	

- Do you want to Power down mode?
- Do you want to Internal Reference Voltage (BGR)?
- Which do you want to Serial Input TYPE or parallel Input TYPE?
- Do you need 3.3V and 5V power supply in your system?

