

PLEASE CHECK WWW.MOLEX.COM FOR LATEST PART INFORMATION

Part Number: **0563771200**
Status: **Active**
Description: CRC™ Shielded Rectangular I/O Receptacle Shell, Panel Mount, for 4-Circuit Power and 12-Circuit Signal Housings, Front Mount Type

Documents:

Drawing (PDF)	Product Specification PS-51300-004 (PDF)
Product Specification PS-51238-010 (PDF)	Product Specification PS-51300-005 (PDF)
Product Specification PS-51238-018 (PDF)	RoHS Certificate of Compliance (PDF)

General

Product Family	I/O Connectors
Series	56377
Application	Panel-Mount
Component Type	Panel Mount Shell
Product Name	CRC™
Type	N/A

Physical

Boot Color	N/A
Circuits (Loaded)	N/A
Circuits (maximum)	12
Durability (mating cycles max)	100
Gender	Receptacle
Keying to Mating Part	Yes
Lock to Mating Part	Yes
Material - Plating Mating	n/a
Orientation	Vertical
Packaging Type	Tray
Panel Mount	Front
Pitch - Mating Interface (in)	0.000 In
Pitch - Mating Interface (mm)	0.00 mm
Polarized to Mating Part	Yes
Polarized to PCB	N/A
Surface Mount Compatible (SMC)	N/A
Temperature Range - Operating	-40°C to +105°C
Termination Interface: Style	N/A
Waterproof / Dustproof	No

Electrical

Current - Maximum per Contact	4A
Shield Type	Full Shield
Shielded	Yes
Voltage - Maximum	250V AC (RMS)/DC

Material Info

Reference - Drawing Numbers

Application Specification	AS-51238-011, AS-51300-005
Product Specification	PS-51238-010, PS-51238-018, PS-51300-004, PS-51300-005, RPS-51238-001
Sales Drawing	SD-56377-004



image - Reference only

EU RoHS
ELV and RoHS
Compliant
REACH SVHC
 Not Reviewed
Halogen-Free
Status
 Not Reviewed

China RoHS



Need more information on product environmental compliance?

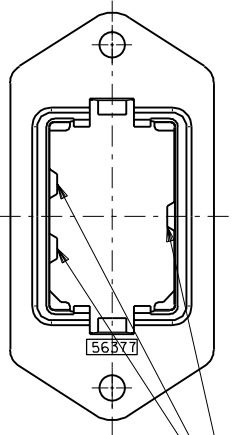
Email productcompliance@molex.com
 For a multiple part number RoHS Certificate of Compliance, [click here](#)

Please visit the [Contact Us](#) section for any non-product compliance questions.

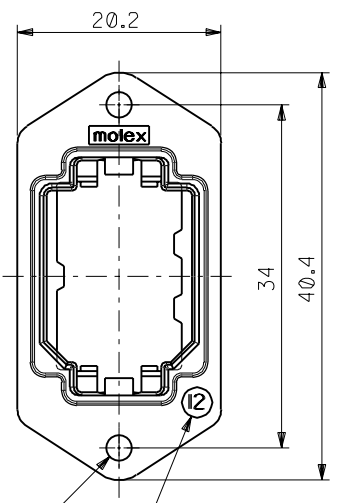
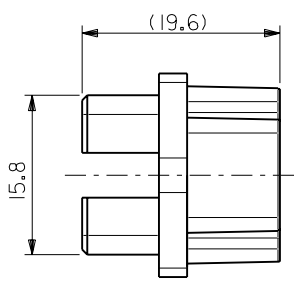
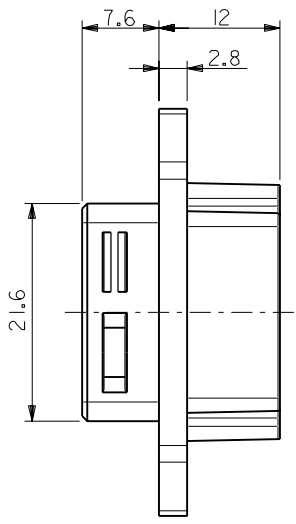
Search Parts in this Series
 56377Series

Use With
 55890-041*|51300-041*|51233-121*|
 51238-121*

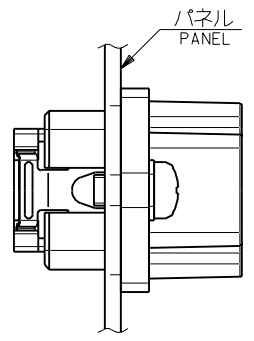
DWG. NO.
SD-56377-004



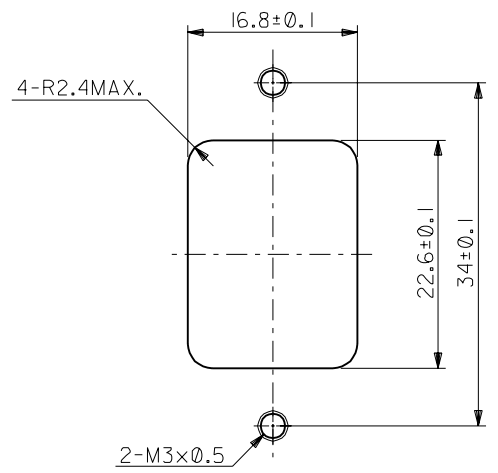
ハウジング挿入方向キー
POLARIZATIONS KEY FOR HOUSING



SIZE IDENTIFICATION



パネル前面取り付け
FRONT MOUNT TYPE



推奨パネル切り取り寸法 (前面取り付け)
RECOMMENDED PANEL OPENING (FRONT MOUNTING)

注記
NOTES

- 材質
MATERIAL
亜鉛合金、ニッケルメッキ
ZINC ALLOY, Ni PLATING
- 適用ハウジングアッセンブリ: 51233-121* (PIN HS'G ASS'Y)
51238-121* (SOCKET HS'G ASS'Y)
55890-041* (PIN HS'G ASS'Y)
51300-041* (SOCKET HS'G ASS'Y)
APPLICABLE HOUSING ASS'Y: 51233-121* (PIN HS'G ASS'Y)
51238-121* (SOCKET HS'G ASS'Y)
55890-041* (PIN HS'G ASS'Y)
51300-041* (SOCKET HS'G ASS'Y)
- 推奨ねじ締め付けトルク: 5~6 kgf・cm
RECOMENDED SCREW TIGHTENING TORQUE: 5~6 kgf・cm

56377-1200	56377-****
MATERIAL.NO	MODEL.NO

DIMENSIONS:		SHT	REV
<input type="checkbox"/> mm	<input type="checkbox"/> INCH	<input checked="" type="checkbox"/> mm	<input type="checkbox"/> ONLY
		REVISE ON CAD ONLY	

TITLE: COMPACT ROBOT CONN. (CRC) RECEPTACLE SHELL

MOLEX INCORPORATED

MATERIAL NO.	DRAWING NO.	SHEET NO.
SEE CHART	SD-56377-004	1 OF 1

THIS DRAWING CONTAINS INFORMATION THAT IS PROPRIETARY TO MOLEX INCORPORATED AND SHOULD NOT BE USED WITHOUT WRITTEN PERMISSION. SIZE B

DO NOT SCALE DRAWING

EC NO. DRWN: CHK: APPR:	EC NO. DRWN: CHK: APPR:	EC NO. DRWN: CHK: APPR:	REVISED 01/10/17 EC NO. J2002-0932 DRWN: S.AKIYAMA CHK: J.MIYAZAWA APPR: Y.O.IITO	RELEASED 01/02/09 EC NO. JD2001-1040 DRWN: S.AKIYAMA CHK: J.MIYAZAWA APPR: H.IKESUGI	DESCRIPTION
			A	0	注記参照 SEE NOTES
					FINISH 仕上げ
					WIRE RANGE 適用導線範囲
					INS. RANGE 被覆外径

MATERIAL 材料	注記参照 SEE NOTES
FINISH 仕上げ	#
WIRE RANGE 適用導線範囲	#
INS. RANGE 被覆外径	#

GENERAL TOLERANCES: (UNLESS SPECIFIED) 一般公差	SCALE 2-1	DESIGN UNITS <input checked="" type="checkbox"/> mm <input type="checkbox"/> INCH	THIRD ANGLE PROJECTION
10 UNDER 未満	±0.2	DRAWN BY & DATE S. Akiyama / 01/25	TITLE:
10 OVER 以上	±0.25	CHECKED BY & DATE J. Miyazawa / Y.O.	COMPACT ROBOT CONN. (CRC) RECEPTACLE SHELL
30 OVER 以上	±0.3	APPROVED BY & DATE H. Ikisugi	MOLEX INCORPORATED
ANGLE 角度	±3°	CAD FILE NAME 56377004.S01	MATERIAL NO. SEE CHART

SCALE 2-1	DESIGN UNITS <input checked="" type="checkbox"/> mm <input type="checkbox"/> INCH	THIRD ANGLE PROJECTION
DRAWN BY & DATE S. Akiyama / 01/25	CHECKED BY & DATE J. Miyazawa / Y.O.	APPROVED BY & DATE H. Ikisugi
CAD FILE NAME 56377004.S01	MATERIAL NO. SEE CHART	DRAWING NO. SD-56377-004

TITLE: COMPACT ROBOT CONN. (CRC) RECEPTACLE SHELL	MOLEX INCORPORATED
MATERIAL NO. SEE CHART	DRAWING NO. SD-56377-004
SHEET NO. 1 OF 1	SIZE B