



Data Sheet



Product Category: IF SAW Filter

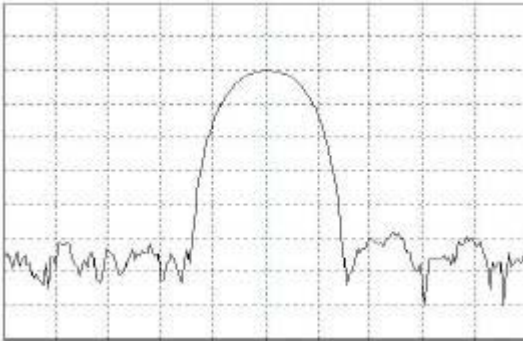
Part Number	Package	Application	Last Modified
820-IF70.0M-U	20.2 x 12.6 Thru Hole	Base Station & Repeater	Jan. 01, 2007

TYPE :
70.0 MHz Bandpass Filter
0.59 MHz Bandwidth

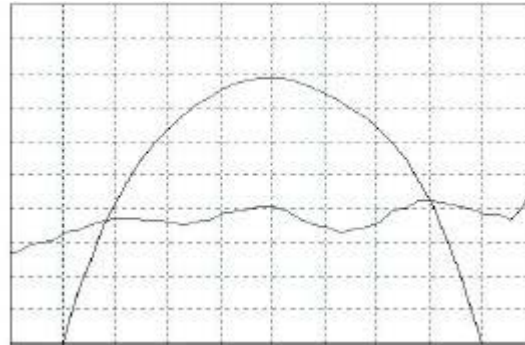
PART NUMBER :
820-IF70.0M-U



FREQUENCY CHARACTERISTICS



Horizontal : 0.5 MHz/Div
Vertical : 10 dB/Div



Horizontal : 0.1 MHz/Div
Vertical : 1 dB/Div
Vertical : 100 ns/Div

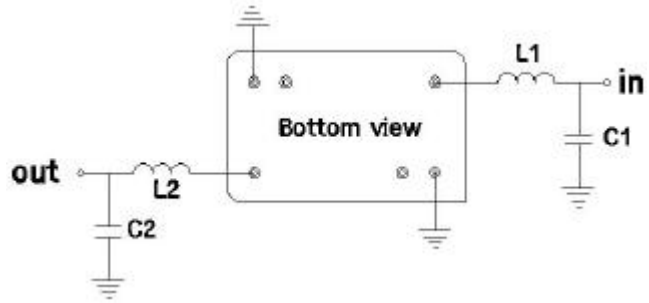
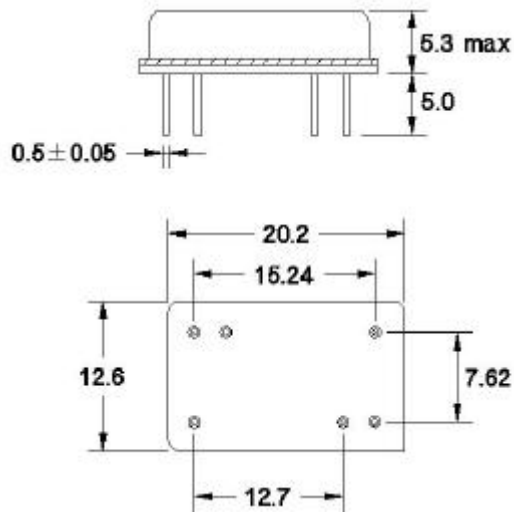
OPERATING CONDITIONS / ELECTRICAL CHARACTERISTICS

PARAMETERS	Minimum	Typical	Maximum	Units
Center Frequency	69.97	70.00	70.03	MHz
Insertion Loss	-	13.7	15.0	dB
1dB Bandwidth	0.30	0.39	-	MHz
3dB Bandwidth	0.47	0.59	-	MHz
40dB Bandwidth	-	1.395	1.42	MHz
Passband Ripple	-	0.8	1.5	dB
Phase Linearity	-	3.0	6.0	degc
Group Delay Variation	-	300	500	nsec
Absolute Delay	-	2.5	-	µsec
Ultimate Rejection	40	50	-	dB
Substrate Material	-	Quartz	-	-
Ambient Temperature	-	25	-	°C

* Custom SAW IF Filters available. Contact Oscilent for assistance.

PACKAGE OUTLINE (mm)

TEST FIXTURE



L1 = 560nH C1 = 30pF
 L2 = 390nH C2 = 22pF
 Source/Load Impedance = 50 ohms

Oscilent Corporation - CALL **949.252.0522**

Part No.: 820-IF70.0M-U

18195 East McDermott Street , Building D , Irvine , CA 92614 , USA
 Fax: 949.252.0599 , E-Mail: Sales@Oscilent.com