



Data Sheet



Product Category: IF SAW Filter

Part Number	Package	Application	Last Modified
835-IF240.0M-E	35.0 x 12.8 Thru Hole	Base Station & Repeater	Jan. 01, 2007

TYPE :

240.0 MHz Bandpass Filter

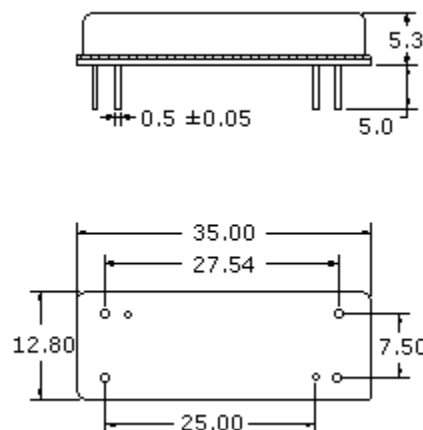
PART NUMBER :

835-IF240.0M-E**OPERATING CONDITIONS / ELECTRICAL CHARACTERISTICS**

PARAMETERS	Minimum	Typical	Maximum	Units
Center Frequency	239.85	240.00	240.15	MHz
Insertion Loss	-	30.4	31.5	dB
Source Impedance (single ended)*	-	50	-	ohm
Load Impedance (single ended)*	-	50	-	ohm
1.5dB Bandwidth	18.9	19.16	-	MHz
3.0dB Bandwidth	19.2	19.45	-	MHz
40.0dB Bandwidth	-	20.85	21.1	MHz
Amplitude Ripple (Fo+/-9.375 MHz)	-	1.0	1.5	dBp-p
Group Delay Variation (Fo+/-9.375 MHz)	-	40	100	ns
Absolute Delay at Fo	-	2.67	-	μs
Ultimate Rejection	50	55	-	dB
Temperature Coefficient	-	-20	-	ppm/°C
Storage Temperature	-40	-	+85	°C
Operating Temperature	-30	-	+70	°C

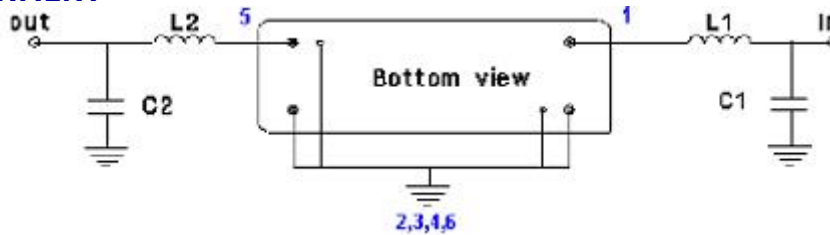
* with Matching Network (Ref. Testing Environment Circuit as shown below). Those impedances could be modified with different impedances values and/or structures, if necessary.

** Custom SAW IF Filters available. Contact Oscilent for assistance.

PACKAGE OUTLINE (mm)

PIN Descriptions: IN-1, OUT 5, GROUND -2,3,4,6,Case

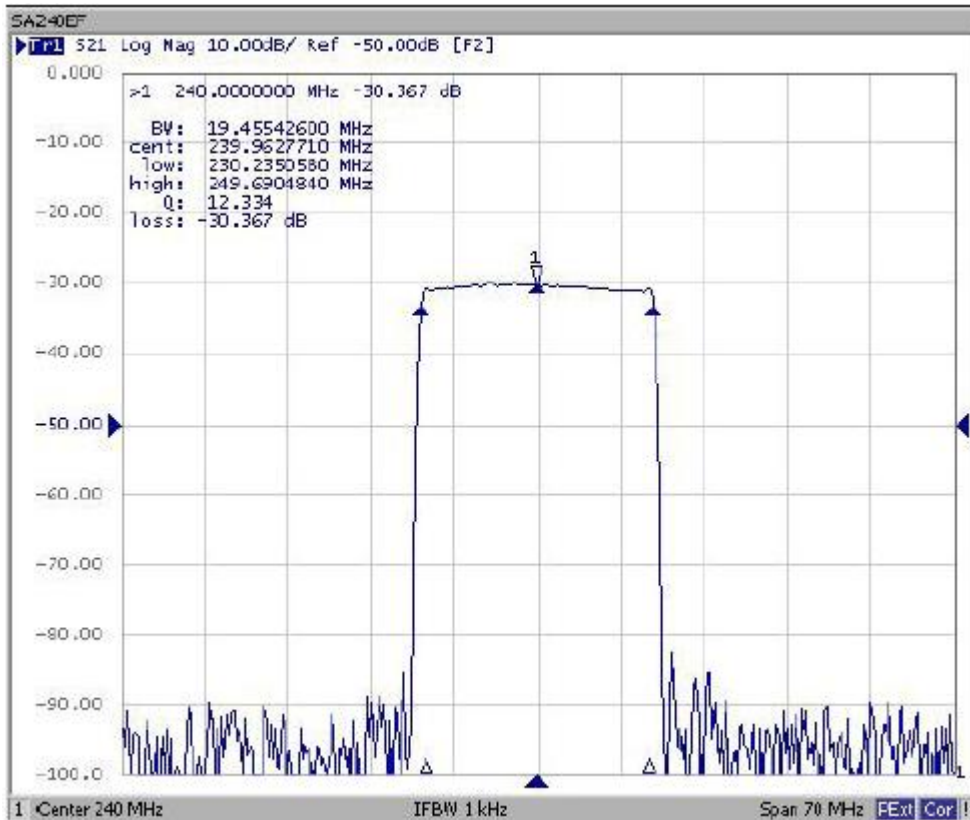
TEST ENVIRONMENT



Test Fixture & Values	
Input	L1=12nH, C1=20pF
Output	L2=12nH, C2=20pF

Source & Load Impedance: 50 ohm

FREQUENCY RESPONSE



Oscilent Corporation - CALL **949.252.0522**

Part No.: 835-IF240.0M-E

18195 East McDermott Street, Building D, Irvine, CA 92614, USA
 Fax: 949.252.0599, E-Mail: Sales@Oscilent.com