

CXA-P1212A-WJL (8W DOUBLE OUTPUTS WITH DIMMING FUNCTION)

DESCRIPTION :

This DC to AC Inverter was developed for many other low LCD Backlight power supply as low profile applications, either for LCD Monitor or Industrial PC.
Applicable LCD; 10 to 15 inches double lamp type

- Lamp Voltage 600Vrms
- Lamp Current 6mArms
- Lamp Start Up Voltage 1700Vrms (Vin : 12V)



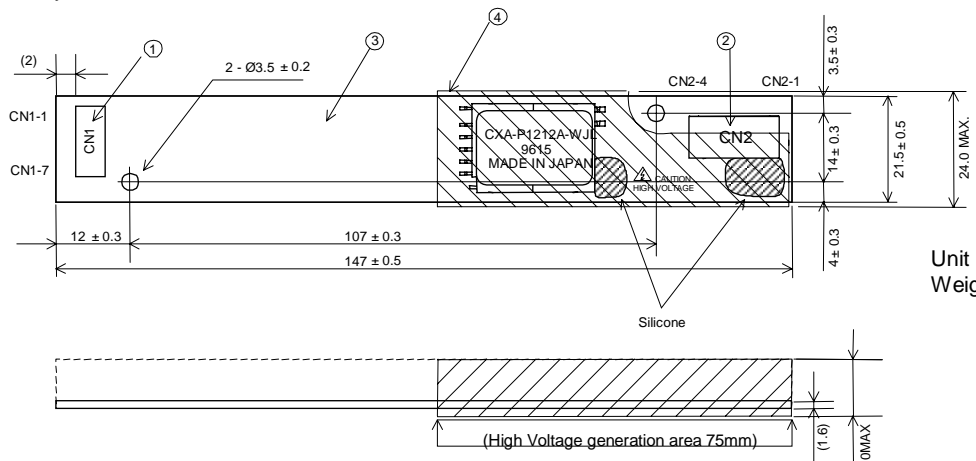
FEATURES :

- PWM dimming type.
- Current Feedback Circuit
- High Efficiency
- Low noise with voltage resonant circuit
- Regulated output current

TEMPERATURE & HUMIDITY :

- Operating Temperature Range -10°C ~ +70°C
- Storage Temperature Range -30°C ~ +85°C
- Humidity 95 %RH max

DIMENSIONS :



Unit : mm
Weight :25 (g) typ.

No.	Part Description	Qty.	Note	Item
1	PWB	1	UL94V-0 t=1.0mm	
2	Connector CN1	1	53261-0790 (Molex)	
3	Connector CN2,3	2	SM03(7-D1)B-BHS-1 or SM04(4.0)B-BHS-1 (JST)	
4	Insulation sheet	2	FR60 t=0.38mm	

CN1 : 53261-0790 (Molex)

Pin	Symbol	Note
CN1-1	Vin	10.8 ~ 13.2V
CN1-2		
CN1-3	GND	0 V
CN1-4		
CN1-5	Vrmt	0 ~ 0.4V : OFF 2.5V ~ Vin : ON
CN1-6	Vbr1 / Rbr1	GND / 0 ~ 10kΩ
CN1-7	Vbr2 / Rbr2	0 ~ 0.6V / 0 ~ 10kΩ

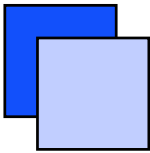
CN2 : SM03(7-D1)B-BHS-1 or SM04(4.0)B-BHS-1 (JST)

Pin	Symbol	Note
CN2-1	Vhigh1	600Vrms (6mArms)
CN2-2	Vhigh2	600Vrms (6mArms)
CN2-3	N.C.	
CN2-4	Vlow	(2V)

Power Systems – The Power Solution

Web: www.Power-Systems.de
Email: Info@Power-Systems.de

Address: Dörnet 8 ; 74360 Ilsfeld-Auenstein / Germany
Tel. : + 49 / 70 62 / 67 59 - 6
Fax: + 49 / 70 62 / 67 59 - 80



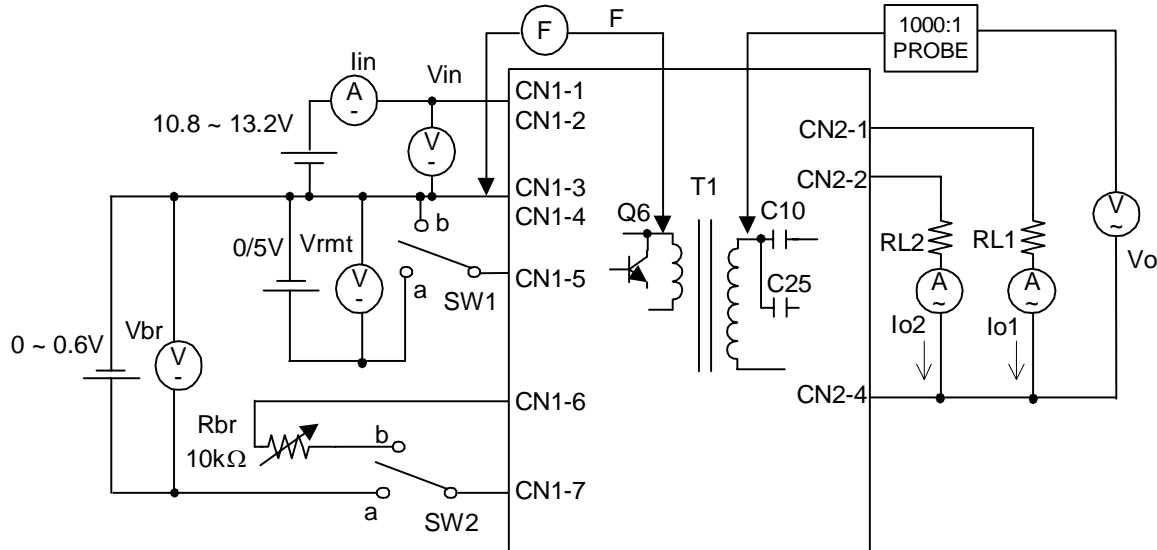
CXA-P1212A-WJL (8W DOUBLE OUTPUTS WITH DIMMING FUNCTION)

ELECTRICAL CHARACTERISTICS :

Parameters	Symbol	Conditions				Specifications			Unit	Note
		Vin (V)	Vbr / Rbr	Ta (°C)	RL (kΩ)	min.	typ.	max.		
Output Current	Iout	12 ± 1.2	0V / 0Ω	-10 ~ +70	95 ~ 116	5.3	6.0	6.7	mArms	Max Brightness.
		12 ± 0.6	0V / 0Ω	23 ± 5	106	5.5	6.0	6.5	mArms	
		12 ± 0.6	0.6V / 10kΩ	23 ± 5	106	1.2	2.0	2.8	mArms	Min Brightness.
Input Current	Iin	12 ± 0.6	0V / 0Ω	-10 ~ +70	106	-	0.8	1.0	Adc	
Frequency	FL	12 ± 0.6	0V / 0Ω	-10 ~ +70	106	35	40	45	kHz	
Open Voltage	Vopen	10.8	0V / 0Ω	-10 ~ +70	∞	1500	1700	-	Vrms	

Note :Please use minimum of 2mm clearance (all directions) between inverter high voltage area and any conductors.
Please refer to mechanical drawing for marking of high voltage area.

TEST CIRCUIT :



SW1	Operation of unit
a	Operation
b	Non operation

SW2	Operation of unit
a	Voltage dimming Vbr=0~0.6V
b	Variable resistance dimming VR=0~10kΩ

Power Systems – The Power Solution

Web: www.Power-Systems.de
Email: Info@Power-Systems.de

Address: Dörnet 8 ; 74360 Ilsfeld-Auenstein / Germany
Tel. : + 49 / 70 62 / 67 59 - 6
Fax: + 49 / 70 62 / 67 59 - 80