



TERMINAL BLOCKS

5.08mm PITCH PLUG IN

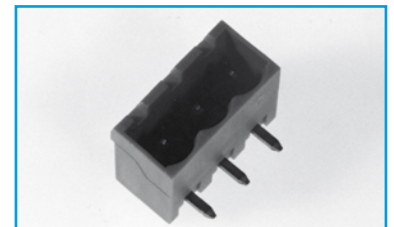
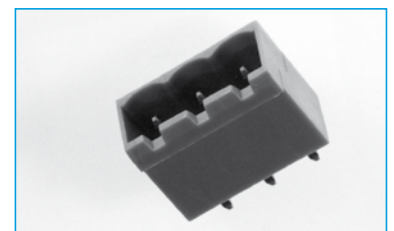
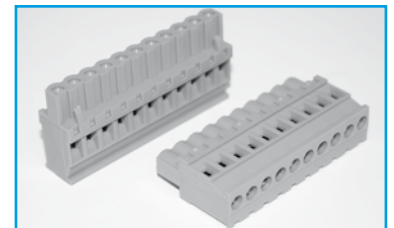
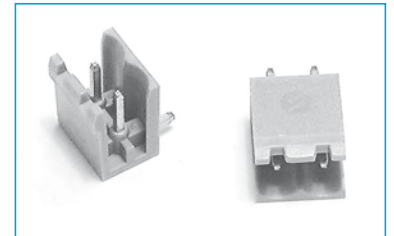
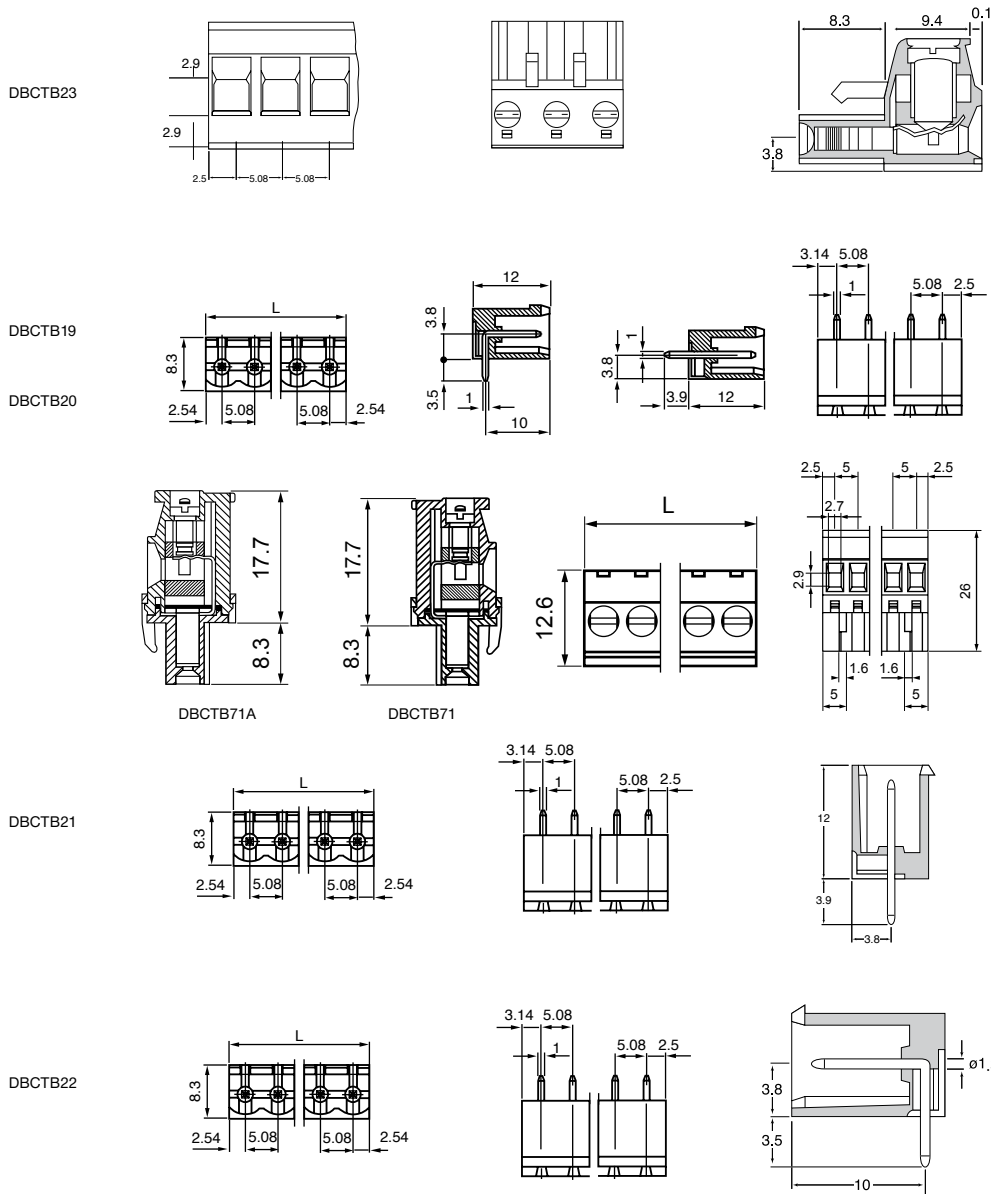
- 2-24 Pole 5.08mm pitch
- Colour green
- Horizontal and Vertical
- Open and closed headers
- Rating 12A
- UL/VDE/CE approved

SPECIFICATION

Rating: 12A/380V
Dielectric Strength: >2.5KV
Insulation Resistance: >5MΩ
Working temperature: -20°C to 125°C
Short Period: 160°

Moulding: UL94V-0 flame retardant nylon 66
Pin/terminal: 5 micron tinned nickel plated brass
Rising clamp: 5 micron Nickel brass
Screw/torque: M2 steel/0.5Nm 7 micron zinc colour passivated and tropicalised

OUTLINE DRAWING



ORDERING INFORMATION

DBC	TB	21	/2
Dubilier Connectors	Series Terminal Block	Style	N° of Ways
		19 = Open end straight	2 = 2 ways
		20 = Open end right angle	3 = 3 ways
		21 = Closed end straight	
		22 = Closed end right angle	
		23 = Female	
		71 = Standard vertical female	
		71A = Reversed vertical female	
			* Other Number of ways are available up to 24
			Please consult office for further details

SECTION 18