

PLEASE CHECK WWW.MOLEX.COM FOR LATEST PART INFORMATION

Part Number: [0039000279](#)
Status: **Active**
Overview: [standard_062](#)
Description: 1.57mm (.062") Diameter, Standard .062" Pin and Socket Crimp Terminal, Series 1561, 3.68mm (.145") Pitch, Female, Tin (Sn) Plated Brass Contact, 18-24 AWG, Reel

Documents:

[Drawing \(PDF\)](#) [RoHS Certificate of Compliance \(PDF\)](#)
[Product Specification PS-1625-010 \(PDF\)](#)

General

| | |
|-------------------------|------------------------------|
| Product Family | Crimp Terminals |
| Series | 1561 |
| Crimp Quality Equipment | Yes |
| Overview | standard_062 |
| Product Name | Standard .062" |

Physical

| | |
|--------------------------------|--------------------------|
| Gender | Female |
| Material - Metal | Brass |
| Material - Plating Mating | Tin |
| Material - Plating Termination | Tin |
| Packaging Type | Reel |
| Plating min: Mating (µin) | 35 |
| Plating min: Mating (µm) | 0.88 |
| Plating min: Termination (µin) | 35 |
| Plating min: Termination (µm) | 0.88 |
| Termination Interface: Style | Crimp or Compression |
| Wire Insulation Diameter | 1.50-3.10mm (.059-.122") |
| Wire Size AWG | 18, 20, 22, 24 |
| Wire Size mm ² | N/A |

Material Info

Old Part Number 1561T

Reference - Drawing Numbers

Product Specification PS-1625-010, RPS-1625-001, RPS-5025-001
 Sales Drawing SD-1561-001



image - Reference only

EU RoHS

**ELV and RoHS
Compliant**

REACH SVHC

Contains SVHC: No

Halogen-Free

Status

Halogen-Free

China RoHS



**Need more information on product
environmental compliance?**

Email productcompliance@molex.com
 For a multiple part number RoHS Certificate of Compliance, [click here](#)

Please visit the [Contact Us](#) section for any non-product compliance questions.

Search Parts in this Series

[1561Series](#)

Use With

[1625nr Receptacle Housing](#)

Application Tooling | FAQ

Tooling specifications and manuals are found by selecting the products below. Crimp Height Specifications are then contained in the Application Tooling Specification document.

Global

| Description | Product # |
|--|----------------------------|
| Mini-Mac™ Applicator | 0638914000 |
| Hand Crimp Tool for Standard .062" Pin and Socket Crimp Terminals, 18-24 AWG | 0638191300 |
| Manual Extraction Tool | 0011030002 |

Japan

| Description | Product # |
|--|-------------------|
| Hand Insertion Tool | <u>0011020001</u> |
| Applicator for M211A | <u>0011260072</u> |
| Bench Press, 18-28 AWG, for 1560 and 1561 Crimp Terminal | |

This document was generated on 05/19/2010

PLEASE CHECK WWW.MOLEX.COM FOR LATEST PART INFORMATION

F

E

D

C

B

A

F

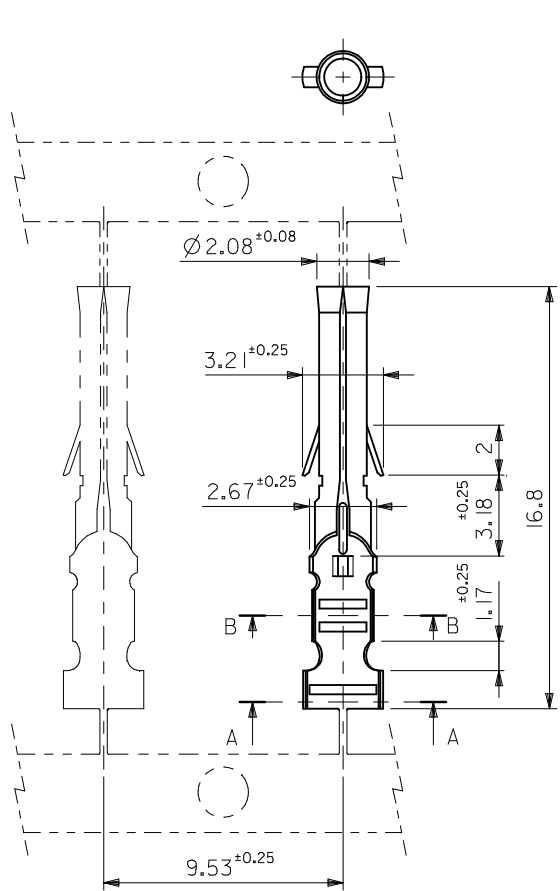
E

D

C

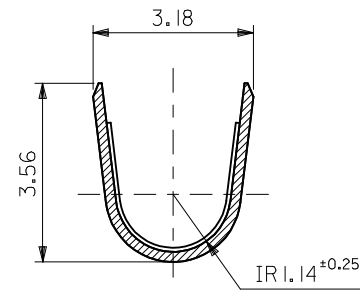
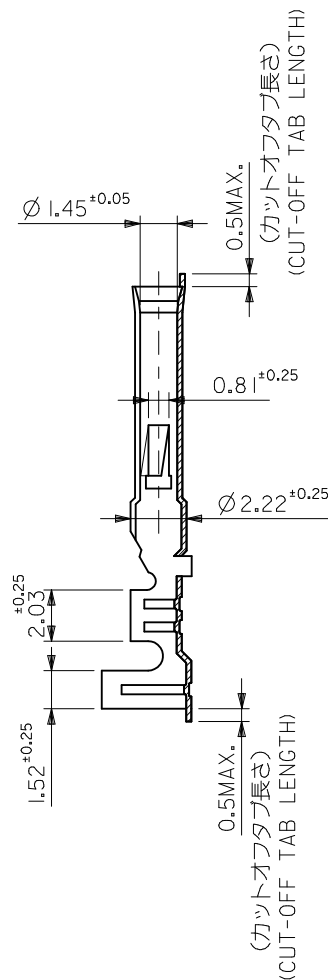
B

A

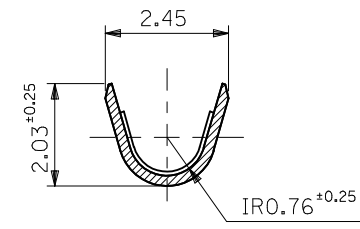


注記 NOTES:

1. 一般公差 : ±0.4
GENERAL TOLERANCES : ±0.4



SECT. A-A
(SCALE 10 : 1)



SECT. B-B
(SCALE 10 : 1)

| | | | |
|---|------------|---------|----------------|
| ニッケル (2 µm MIN.) 下地 金 (0.35 µm MIN.) GOLD (0.35 µm MIN.) OVER NICKEL (2 µm MIN.) | 39-00-0334 | I56 IGL | バラ端子 LOOSE |
| 銅 (0.5 µm MIN.) 下地 錫 (0.9 µm MIN.) TIN (0.9 µm MIN.) OVER COPPER (0.5 µm MIN.) | 39-00-0333 | I56 IG | 連鎖状端子 CHAIN |
| | 39-00-0331 | I56 ITL | バラ端子 LOOSE |
| | 39-00-0279 | I56 IT | 連鎖状端子 CHAIN |
| メッキ PLATING | EDP.NO. | ENG.NO. | 形状 FORM |

| |
|-------------------------------------|
| 材料 MATERIAL 黄銅 BRASS 0.2 t |
| 仕上げ FINISH |
| 適用電線範囲 WIRE RANGE AWG# 18-#24 |
| 被覆外径 INS. RANGE Ø 1.5 ~ 3.1 |

| |
|----------------------------|
| REVISED |
| EC NO: J2009-19/1 |
| DRWN: YA0YAGI 2009/02/16 |
| CHKD: THARUYAMA 2009/02/17 |
| APPR: NUKITA 2009/02/17 |
| DESCRIPTION |
| REV |

| | |
|--|---------|
| GENERAL TOLERANCES (UNLESS SPECIFIED) | |
| 10 UNDER | ± --- |
| 10 OVER 30 UNDER | ± --- |
| 30 OVER | ± --- |
| ANGULAR | ± --- ° |
| DRAFT WHERE APPLICABLE MUST REMAIN WITHIN DIMENSIONS | |

| | |
|----------------------------|-----------|
| DIMENSION STYLE MM ONLY | |
| DRAWN BY | DATE |
| H. HASEGAWA | '93/07/09 |
| CHECKED BY | DATE |
| H. HIRAMOTO | '93/07/09 |
| APPROVED BY | DATE |
| M. FUKUSHIMA | '93/07/09 |
| MATERIAL NO. | |
| SEE TABLE | |
| SIZE | A3 |

| | | |
|--|------------------------|---------------------------|
| SCALE 5:1 | DESIGN UNITS METRIC | THIRD ANGLE PROJECTION |
| TITLE .062 DIA CRIMP FEMALE TERM | | |
| MOLEX INCORPORATED | | |
| DOCUMENT NO. SD-1561-001 | SHEET NO. 1 OF 1 | |
| THIS DRAWING CONTAINS INFORMATION THAT IS PROPRIETARY TO MOLEX INCORPORATED AND SHOULD NOT BE USED WITHOUT WRITTEN PERMISSION | | |