



CSM-20-15G SQ DIRECTIONAL COUPLERS

REV: 005, 02/05/01

- SPACE QUALIFIED
- 12.4 - 18 GHz DIRECTIONAL COUPLER



TECHNICAL DESCRIPTION / APPLICATION

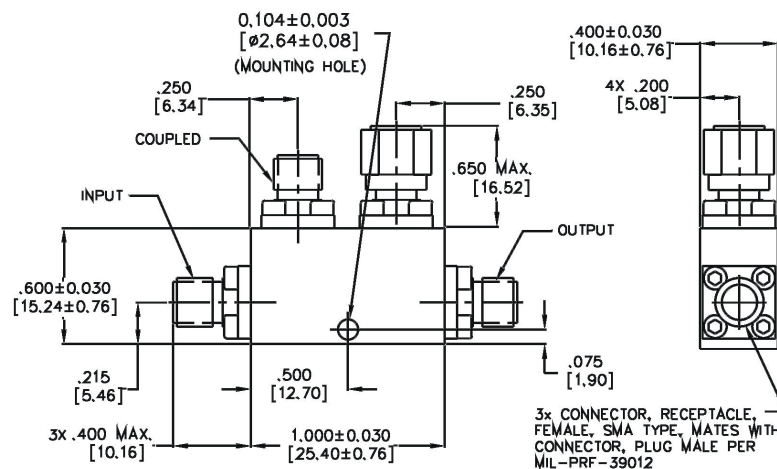
SERIES 05

The CSM-20-15G SQ Directional Coupler covers 12.4-18.0 GHz with a stripline design. This offers low transmission and excellent VSWR. This unit has been designed, manufactured and qualified per Merrimac document CENG-0001, "Standard Design Requirements for Space Qualified Devices".

GENERAL SPECIFICATIONS

MODEL NUMBER	FREQUENCY RANGE GHz	COUPLING dB	INSERTION LOSS dB MAX.	DIRECTIVITY dB MIN.	VSWR MAIN, MAX.
CSM-20-15G SQ	12.4 - 18.0	20 +/- 1.25	0.5	15	1.3:1
VSWR COUPLED, MAX.	FREQUENCY SENSITIVITY dB MAX.	CW POWER RATING MAIN LINE			WEIGHT
1.4:1	+/- .50	10 WATTS			.88 oz.

PACKAGE OUTLINE



NOTES:

1. TOLERANCE ON 3 PLACE DECIMALS ±.020 [.51mm] EXCEPT AS NOTED.
2. MAX. IS LARGEST DIMENSION ALLOWED.
3. DIMENSIONS=INCHES [mm]
4. METRIC EQUIVALENTS ARE TO THE NEAREST .01mm.
5. WEIGHT: .88 OZ. [25g] MAX.