

# ATM Interface Transformers

*SMD versions available on Tape & Reel*

Designed for 155Mbps ATM applications over UTP-5 cable

Supports 100 Base-X and Twisted Pair FDDI

Supports either transmit or receive channels

IEEE 802.3 Compatible

Low common mode emissions

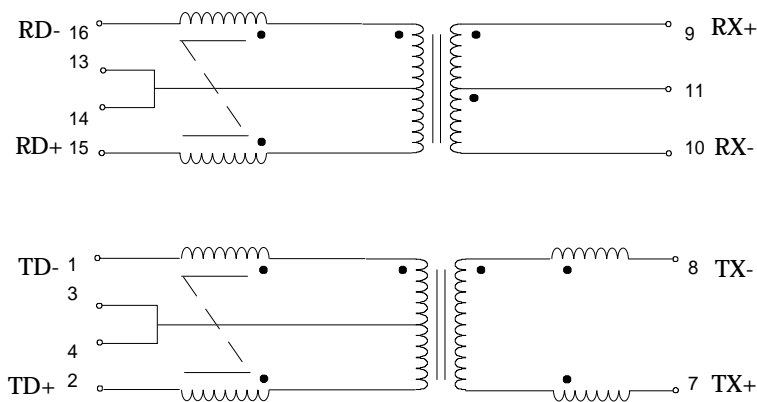
Fast Rise Times

Electrical Specifications at 25° C

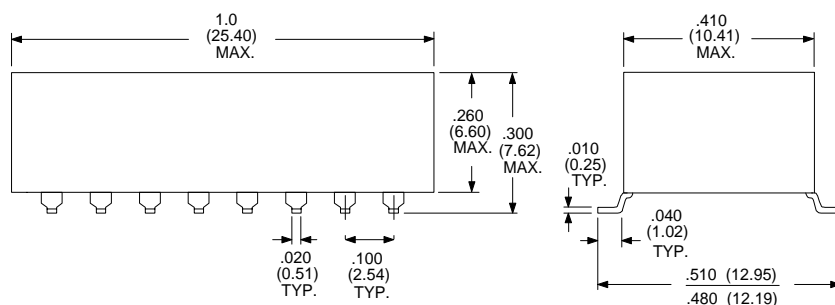
PARAMETER	TYP.	UNITS
Insertion Loss (0.1 to 125 MHz)	-1.1	dB
Rise Time (10 to 90%)	2.5	ns
Return Loss: (0.1 to 60 MHz) TX (0.1 to 60 MHz) RX (60 to 100 MHz) TX (60 to 100 MHz) RX	-15 -17 -11 -15	dB
Differential to Common Mode Rejection (0.1 to 60 MHz) TX (0.1 to 60 MHz) RX (60 to 100 MHz) TX (60 to 100 MHz) RX	-45 -40 -40 -35	dB
Crosstalk (0.1 to 60 MHz) (60 to 100 MHz)	-40 -38	dB
Isolation Min.	1500	Vrms

**TX = TRANSMIT CHANNEL**  
**RX = RECEIVE CHANNEL**

## SCHEMATICS



## Dimensions in Inches (mm)



*Available on Tape & Reel*

Rhombus P/N: <b>T-15503</b>	
Cust. P/N:	Name:
Date: <b>5/22/98</b>	Sheet: 1 of 1