

**PLEASE CHECK WWW.MOLEX.COM FOR LATEST PART INFORMATION**

**Part Number:** [0040021601](#)  
**Status:** **Active**  
**Overview:** [flat blade](#)  
**Description:** Flat Blade Crimp Terminal, Series 41422, Female, With Tin (Sn) Plated Brass Contact, 10-12 AWG, Reel Packaged

**Documents:**

[Drawing \(PDF\)](#) [RoHS Certificate of Compliance \(PDF\)](#)

**General**

Product Family	Crimp Terminals
Series	<a href="#">41422</a>
Crimp Quality Equipment	Yes
Overview	<a href="#">flat blade</a>
Product Name	Flat Blade

**Physical**

Gender	Female
Material - Metal	Brass
Material - Plating Mating	Tin
Material - Plating Termination	Tin
Packaging Type	Reel
Plating min: Mating (µin)	20
Plating min: Mating (µm)	0.50
Plating min: Termination (µin)	20
Plating min: Termination (µm)	0.50
Termination Interface: Style	Crimp or Compression
Wire Insulation Diameter	.79mm (.031") max.
Wire Size AWG	10, 12
Wire Size mm <sup>2</sup>	N/A

**Material Info**

Old Part Number 41422-3A2N5A1

**Reference - Drawing Numbers**

Sales Drawing SD-41422-3\*

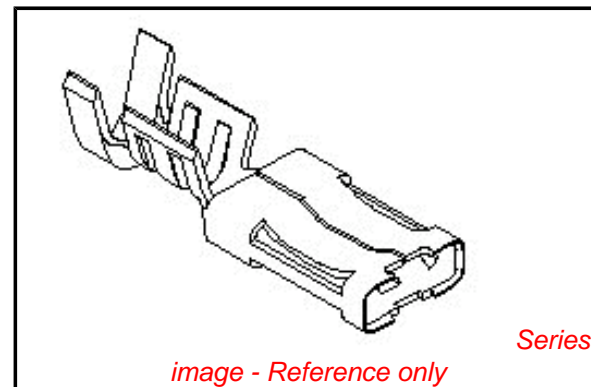


image - Reference only

**EU RoHS**

**ELV and RoHS  
Compliant**  
**REACH SVHC  
Contains SVHC: No**  
**Halogen-Free  
Status**

**China RoHS**



**Need more information on product  
environmental compliance?**

Email [productcompliance@molex.com](mailto:productcompliance@molex.com)  
 For a multiple part number RoHS Certificate of Compliance, [click here](#)

Please visit the [Contact Us](#) section for any non-product compliance questions.

**Search Parts in this Series**

[41422Series](#)

**Application Tooling | [FAQ](#)**

*Tooling specifications and manuals are found by selecting the products below. Crimp Height Specifications are then contained in the Application Tooling Specification document.*

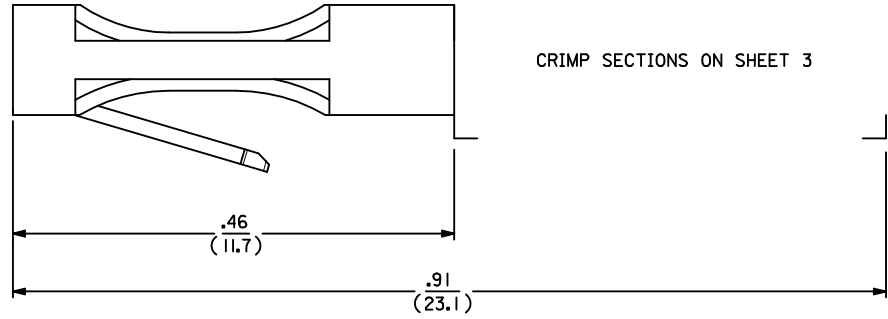
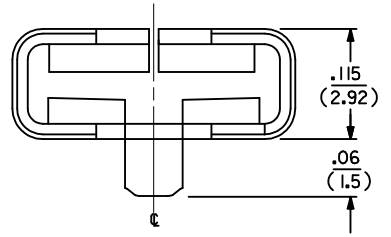
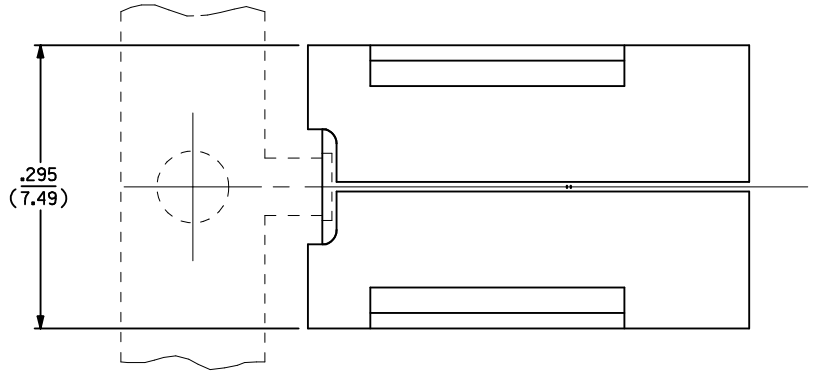
**Global**

Description	Product #
Mini-Mac™ Applicator, 10-13 AWG Wire	<a href="#">0638821000</a>
Mini-Mac™ Applicator, Double Crimp Applicator for 14-18 AWG Wire	<a href="#">0638821200</a>
Hand Crimper	<a href="#">0011010180</a>
Terminator Die	<a href="#">0011402192</a>

**PLEASE CHECK [WWW.MOLEX.COM](http://WWW.MOLEX.COM) FOR LATEST PART INFORMATION**

**NOTES:**

- 1 THIS TERMINAL IS FOR USE WITH .250/(6.35) X .032/(0.81) SPADES AND CRIMPING TO \*10 TO \*18 AWG WIRE WITH .031/(0.79) THICK INSULATION.
- 2 IN ANY HOUSING DESIGN USING THIS TERMINAL, ESPECIALLY WHEN LOW INSERTION FORCES ARE EXPECTED, SOME SORT OF LOCKING DEVICE SHOULD BE CONSIDERED.



CRIMP SECTIONS ON SHEET 3

**MATERIAL:**  
SEE SHEET 2

**FINISH:**  
SEE SHEET 2

3	K1
2	H2
1	K2

UPDATED L TAB EC NO: UCP2010-1707 DRWN: AELHAG 2010/02/12 CHKD: AELHAG 2010/02/22 APPR: FSMITH 2010/02/22	QUALITY SYMBOLS	GENERAL TOLERANCES (UNLESS SPECIFIED)	DIMENSION STYLE	SCALE	DESIGN UNITS	THIRD ANGLE PROJECTION
	▽=0	mm INCH	IN/MM	10:1	INCH	
	▽=0	4 PLACES ± --- ± ---	DRAWN BY DATE	TITLE <b>TERMINAL PUSH-ON CRIMP</b>		
	▽=0	3 PLACES ± 0.01 ± ---	RWK 01/26/89			
REV	2 PLACES ± 0.014 ± .25	CHECKED BY DATE	MOLEX INCORPORATED			
K2	1 PLACE ± --- ± .35	RHR 01/26/89				
	ANGULAR ± 1/2°	APPROVED BY DATE	DOCUMENT NO. SD-41422-3* SHEET NO. 1 OF 3			
	DRAFT WHERE APPLICABLE MUST REMAIN WITHIN DIMENSIONS	RAS 01/26/89				
		MATERIAL NO.	THIS DRAWING CONTAINS INFORMATION THAT IS PROPRIETARY TO MOLEX INCORPORATED AND SHOULD NOT BE USED WITHOUT WRITTEN PERMISSION			
		SEE CHART				

PART NO.	ENG. NO.	MATERIAL	MATERIAL EDP NUMBER	FINISH		CONTACT GAP	WIRE RANGE	FORM
				PLATING	LUBRICATION			
040-02-1601	41422-3A2N5A1	A	080-02-1608	2	N	5	A	I
040-02-1602	41422-3A2N5B1	A	080-02-1608	2	N	5	B	I

41422

MATERIALS:

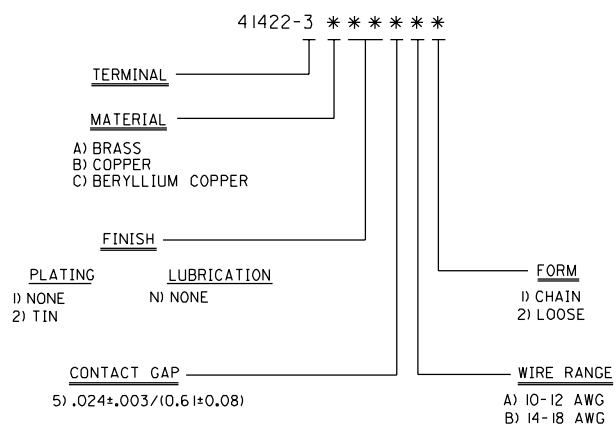
- A) BRASS, ALLOY #C26000, TEMPER: SPRING, .016/(0.4) THICK.
- B) COPPER, ALLOY #C19500, TEMPER: SPRING, .016/(0.4) THICK.
- C) BERYLLIUM COPPER, ALLOY #C17400, .016/(0.4) THICK.

FINISHES:

PLATING

- 2) HOT TIN DIP, SDES-88-P901.

ENGINEERING NUMBER SYSTEM

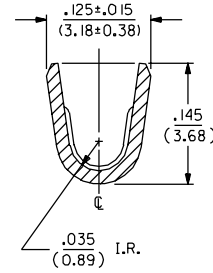
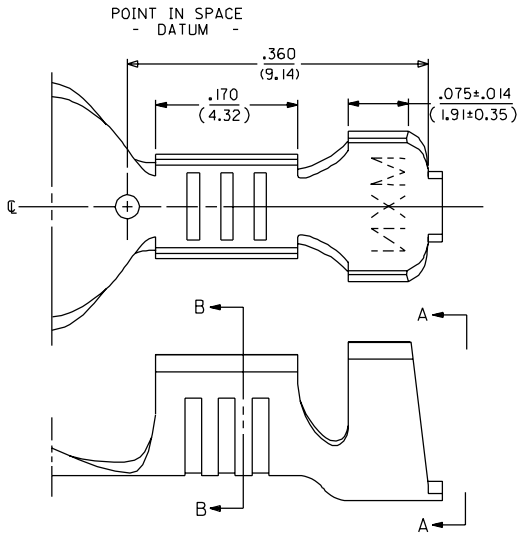


H2	SEE SHEET I
H1	SEE SHEET I
G1	SEE SHEET I
G	SEE SHEET I
F	SEE SHEET I
E	SEE SHEET I
D	SEE SHEET I
C	SEE SHEET I

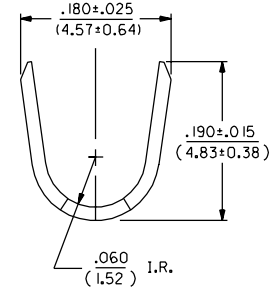
DIMENSIONS SHOWN (METRIC) INCH		▽ = 0	▼ = 0	REVISE ONLY ON CAD SYSTEM
UNLESS OTHERWISE SPECIFIED TOLERANCES: ANGULAR ± .04		TITLE		
3 PLACE ±		TERMINAL, PUSH-ON, CRIMP		
2 PLACE ±		MOLEX INCORPORATED		
1 PLACE ±		LITSE,ILL. 60532 U.S.A.		
DRAFT WHERE APPLICABLE MUST REMAIN WITHIN DIMENSIONS		PART NO. SHEET NO. DATE		
DRWG. BY: RWK		SEE CHART SD-41422-3		
APP'D. BY: RAS		FILE NAME: T41422.S06		
SCALE: :		THIS DRAWING CONTAINS INFORMATION THAT IS PROPRIETARY TO MOLEX INC. AND SHOULD NOT BE USED WITHOUT WRITTEN PERMISSION.		

41422

14-18 AWG WIRE

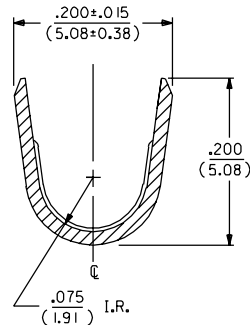
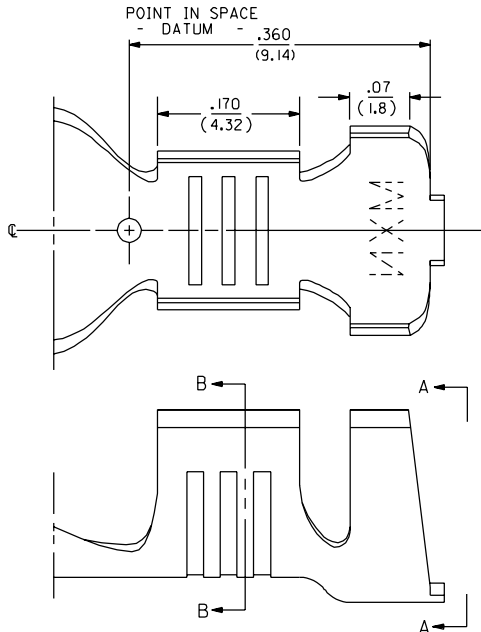


SECTION B-B

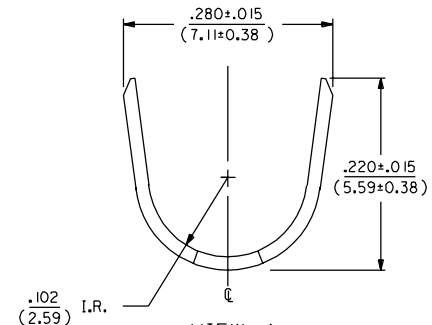


VIEW A

10-12 AWG WIRE



SECTION B-B



VIEW A

K	I SEE SHEET I
K	SEE SHEET I
I	SEE SHEET I
H	I SEE SHEET I
D	SEE SHEET I
C	SEE SHEET I

DIMENSIONS SHOWN METRIC (INCH)		▽ = 0	▽ = 0	REVISE ONLY ON CAD SYSTEM
UNLESS OTHERWISE SPECIFIED TOLERANCES ANGULAR ± .040°		TITLE		
INCH METRIC		TERMINAL, PUSH-ON, CRIMP		
3 PLACE ± .010	---	MOLEX INCORPORATED		
2 PLACE ± .014	± 0.25	L15LEJLL 60532		
1 PLACE ---	± 0.35	U.S.A.		
DRAFT WHERE APPLICABLE MUST REMAIN WITHIN DIMENSIONS		PART NO.	DRWG. NO.	DATE
		SEE CHART	SD-41422-3	01/30/89
DRWG. BY: RWK	CHKD. BY: RHR	FILE NAME	REV.	SIZE
APP'D. BY:	SCALE :	THIS DRAWING CONTAINS INFORMATION THAT IS PROPRIETARY TO MOLEX INC. AND SHOULD NOT BE USED WITHOUT WRITTEN PERMISSION.		