

PLEASE CHECK WWW.MOLEX.COM FOR LATEST PART INFORMATION

Part Number: [0040062014](#)
Status: **Active**
Description: Panel Grounding Clip Crimp Terminal 42172, 14 AWG, 301 Stainless Steel, 0.89mm (.035") Panel Thickness

Documents:

[3D Model](#) [RoHS Certificate of Compliance \(PDF\)](#)
[Drawing \(PDF\)](#)

General

Product Family	Crimp Terminals
Series	42172
Comments	(2) 16 AWG
Crimp Quality Equipment	Yes
Product Name	Panel Grounding Clip

Physical

Gender	Female
Material - Metal	Stainless Steel
Material - Plating Mating	Unplated
Packaging Type	Reel
Termination Interface: Style	Crimp or Compression
Wire Insulation Diameter	3.00mm (.118") max
Wire Size AWG	14
Wire Size mm ²	N/A

Electrical

CSA	LR19980
UL	E126412

Material Info

Old Part Number	42172AA1
-----------------	----------

Reference - Drawing Numbers

Sales Drawing	SD-42172-**
---------------	-------------

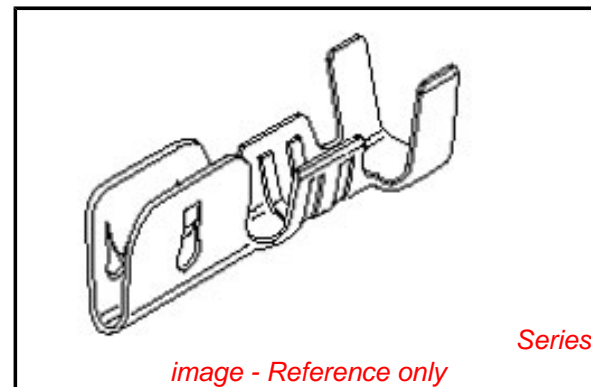


image - Reference only

EU RoHS

ELV and RoHS Compliant
REACH SVHC
Contains SVHC: No
Halogen-Free Status

China RoHS



Need more information on product environmental compliance?

Email productcompliance@molex.com
 For a multiple part number RoHS Certificate of Compliance, [click here](#)

Please visit the [Contact Us](#) section for any non-product compliance questions.

Search Parts in this Series

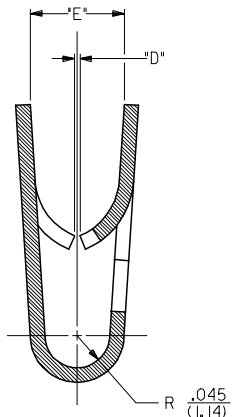
[42172Series](#)

Application Tooling | [FAQ](#)

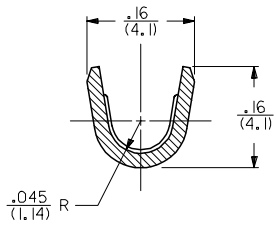
Tooling specifications and manuals are found by selecting the products below. Crimp Height Specifications are then contained in the Application Tooling Specification document.

Global

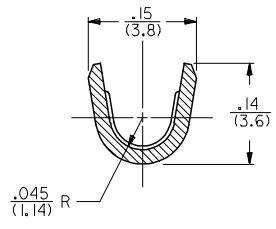
Description	Product #
Mini-Mac™ Applicator	0638913000



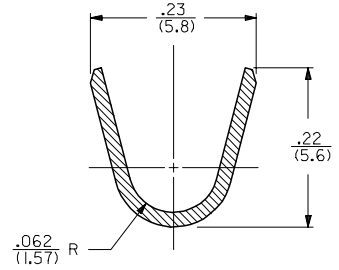
SECTION A-A
SCALE 8:1



SECTION B-B
SCALE 8:1
14 AWG WIRE



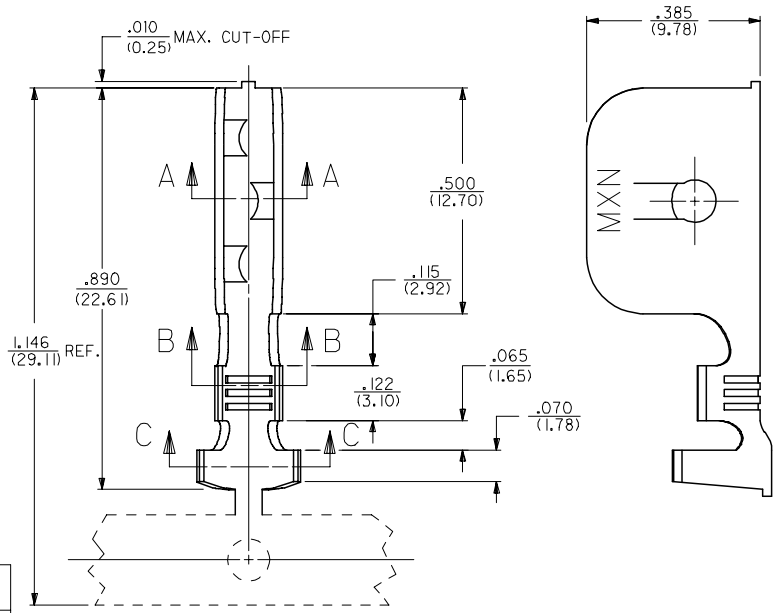
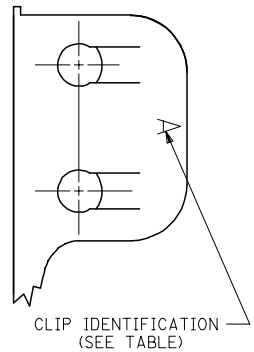
SECTION B-B
SCALE 8:1
18-16 AWG WIRE



SECTION C-C
SCALE 8:1

NOTES:
1. THIS GROUND CLIP CRIMPS TO #14- #18 AWG WIRE WITH .031(.79) THICK INSULATION, SEE CHART, AND IS INTENDED FOR USE ONLY AS A SECONDARY GROUND.

MATERIAL:
STEEL, STAINLESS, TYPE 301,
.020(.51) THICK.



PART NO.	ENG. NO.	DIM. "D"	DIM. "E"	PANEL THICKNESS RANGE	WIRE GAGE	DOUBLE WIRE COMBINATION
040-06-2015	42172-BB1	.025/(0.64)	.13/(3.3)	.035/(0.89)-.050/(1.27)	14 AWG	(2) #16 AWG
040-06-2014	42172-AA1	.008/(0.20)	.11/(2.8)	.015/(0.38)-.035/(0.89)	14 AWG	
050-29-1597	42172-H1	.035/(0.89)	.13/(3.3)	.045/(1.14)-.060/(1.52)	18-16 AWG	
040-06-2017	42172-F1	.015/(0.38)	.11/(2.8)	.020/(0.51)-.030/(0.76)	18-16 AWG	(2) #18 AWG OR
040-06-2013	42172-C1	.050/(1.27)	.13/(3.3)	.060/(1.52)-.075/(1.91)	18-16 AWG	(1) #18 & (1) #16
040-06-2005	42172-B1	.025/(0.64)	.13/(3.3)	.035/(0.89)-.050/(1.27)	18-16 AWG	
040-06-2003	42172-A1	.008/(0.20)	.11/(2.8)	.015/(0.38)-.035/(0.89)	18-16 AWG	
040-06-2024	42172-G1	.004/(0.10)	.11/(2.8)	.015/(0.38)-.035/(0.89)	18-16 AWG	

REM GEOM OUTSIDE DWG	QUALITY SYMBOLS
FC NO: 2005/11/22	▽=0
DRWN: C STEWART	▽=0
CHKD:	
APPR:	
REV: R1	

GENERAL TOLERANCES (UNLESS SPECIFIED)	
	mm INCH
4 PLACES ± .010 ± .004	
3 PLACES ± .010 ± .010	
2 PLACES ± 0.25 ± .014	
1 PLACE ± 0.35 ± .014	
ANGULAR ±1/2°	
DRAFT WHERE APPLICABLE MUST REMAIN WITHIN DIMENSIONS	

DIMENSION STYLE	
IN/MM	
DRAWN BY	DATE
MAB	07-24-92
CHECKED BY	DATE
KBP	07-24-92
APPROVED BY	DATE
RAS	07-24-92
MATERIAL NO.	
DOCUMENT NO.	
SEE CHART	

SCALE 5:1	DESIGN UNITS INCH	THIRD ANGLE PROJECTION
GROUND CLIP		
MOLEX INCORPORATED		
DOCUMENT NO. SD-42172-**		SHEET NO. 1 OF 1
THIS DRAWING CONTAINS INFORMATION THAT IS PROPRIETARY TO MOLEX INCORPORATED AND SHOULD NOT BE USED WITHOUT WRITTEN PERMISSION		