

**PLEASE CHECK WWW.MOLEX.COM FOR LATEST PART INFORMATION**

**Part Number:** [0190240007](#)  
**Status:** **Active**  
**Description:** VibraKrimp™ Quick Disconnect, Male, for 14-16 (2.00-1.30) Wire, Box, Tab 6.35mm (.250") x 0.81mm (.032")

**Documents:**

[Drawing \(PDF\)](#) [RoHS Certificate of Compliance \(PDF\)](#)

**General**

Product Family	Quick Disconnects
Series	<a href="#">19024</a>
Comments	Brass Sleeve with Funnel Ferrule Entry
Crimp Quality Equipment	Yes
Product Name	VibraKrimp™
Type	Quick Disconnect

**Physical**

Barrel Type	Closed
Gender	Male
Glow-Wire Compliant	No
Insulation	None
Lock to Mating Part	None
Material - Metal	Brass
Orientation	Straight
Packaging Type	Bag
Polarized to Mating Part	No
Tab Thickness	0.81mm (.032")
Tab Width	6.35mm (.250")
Temperature Range - Operating	Per Wire Specification
Wire Insulation Diameter	4.30mm (.170") max.
Wire Size AWG	14, 16
Wire Size mm²	1.30 - 2.00

**Electrical**

Voltage - Maximum	Per Wire Specification
-------------------	------------------------

**Material Info**

Old Part Number	MCT-4
-----------------	-------

**Reference - Drawing Numbers**

Sales Drawing	SD-19024-001
---------------	--------------

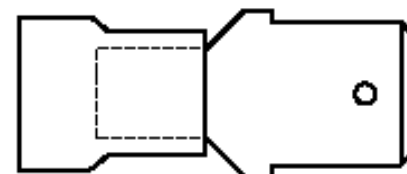


image - Reference only

Series

**EU RoHS**

**ELV and RoHS Compliant**  
**REACH SVHC**  
 Not Reviewed  
**Halogen-Free Status**

**China RoHS**



**Not Reviewed**

**Need more information on product environmental compliance?**

Email [productcompliance@molex.com](mailto:productcompliance@molex.com)  
 For a multiple part number RoHS Certificate of Compliance, [click here](#)

Please visit the [Contact Us](#) section for any non-product compliance questions.

**Search Parts in this Series**

[19024Series](#)

**Application Tooling | FAQ**

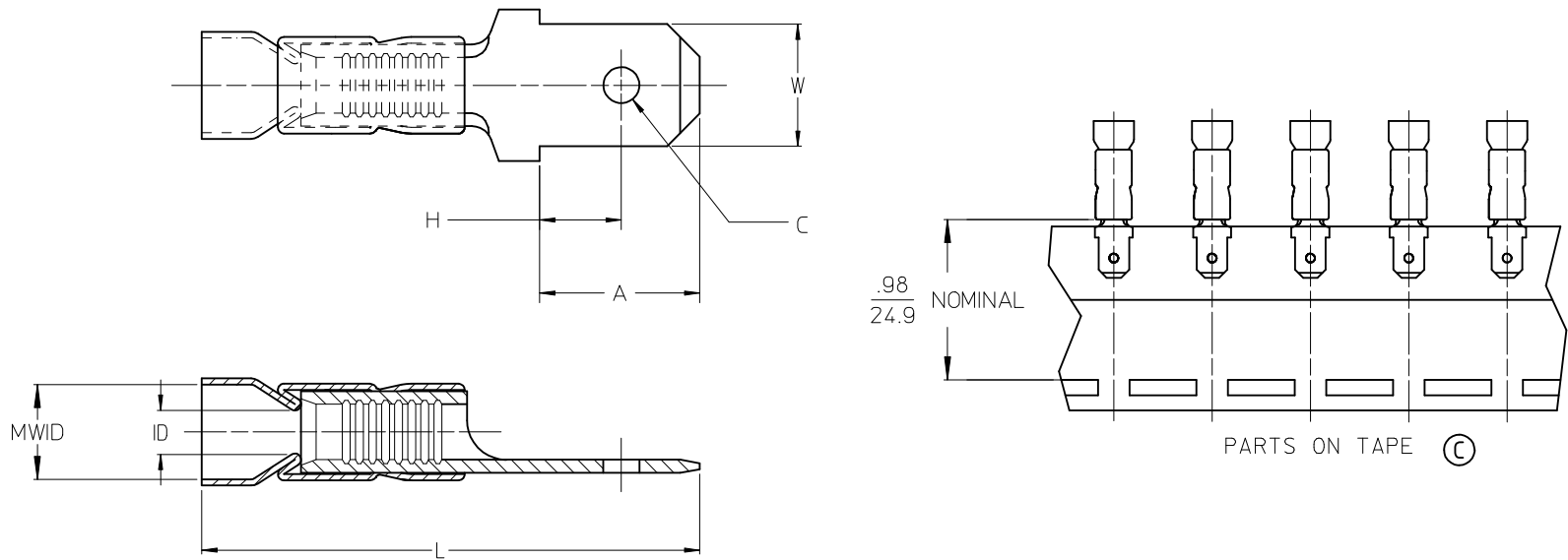
*Tooling specifications and manuals are found by selecting the products below. Crimp Height Specifications are then contained in the Application Tooling Specification document.*

**Global**

Description	Product #
Crimp Hand Tool	<a href="#">0640016800</a>
Crimp Head for the AT-200™ Pneumatic Hand Tool	<a href="#">0640056800</a>

10	9	8	7	6	5	4	3	2	19024				
LOOSE PC MATERIAL NO.	LOOSE PC ENGINEER'G NO.	ON TAPE MATERIAL NO.	ON TAPE ENGINEERING NO.	WIRE RANGE	ID MIN	MWID	L ± .03 0.8	W ± .005 0.13	A MIN	H MAX	C ± .007 0.18	TERMINAL MAT'L, THICKNESS - REF	TERMINAL FINISH
190240001	AMCT-4	190240004	AMCT-4T	22-18AWG (0.38-.96mm <sup>2</sup> )	.054/1.37	.138/3.50	.857/21.77	.250/6.35	.30/7.6	.14/3.6	.075/1.91	BRASS, .032/0.81	ZINC CHROMATE
190240007	MCT-4	190240009	MCT-4T	16-14 AWG (1.23-1.94mm <sup>2</sup> )	.081/2.06	.169/4.29	.857/21.77	.250/6.35	.30/7.6	.14/3.6	.075/1.91	BRASS, .032/0.81	ZINC CHROMATE
190240005	CMCT-4	190240006	CMCT-4T	12-10AWG (3.09-5.01mm <sup>2</sup> )	.128/3.25	.232/5.89	.994/25.25	.250/6.35	.30/7.6	.14/3.6	.075/1.91	BRASS, .032/0.81	ZINC CHROMATE
190240002	AMCT-47	-	-	22-18AWG (0.38-.96mm <sup>2</sup> )	.054/1.37	.138/3.50	.762/19.36	.187/4.75	.24/6.1	.13/3.3	.055/1.40	BRASS, .020/0.51	ZINC CHROMATE
190240008	MCT-47	-	-	16-14 AWG (1.23-1.94mm <sup>2</sup> )	.081/2.06	.169/4.29	.762/19.36	.187/4.75	.24/6.1	.13/3.3	.055/1.40	BRASS, .020/0.51	ZINC CHROMATE

Ⓒ ENTIRE CHART



NOTES:

1. TERMINAL MATERIAL & FINISH: SEE CHART
2. FERRULE:  
MATERIAL: BRASS  
FINISH: TIN Ⓒ
3. TAB DIMENSIONS CONFORM TO UL310 SPECIFICATIONS.
4. PART IS ROHS COMPLIANT.
- Ⓒ 5. MWID = MAXIMUM WIRE INSULATION DIAMETER

REDWN W/MATL & FIN CHG EC NO: ETC2007-0081 DRW: JHLE 2008/01/28 CHKD: JMAGNEIL 2008/01/28 APPR: JMAGNEIL 2008/02/13	DESCRIPTION REV	QUALITY SYMBOLS ▽=0 ▽=0	GENERAL TOLERANCES (UNLESS SPECIFIED)		DIMENSION STYLE IN/MM Ⓒ		SCALE 4:1	DESIGN UNITS INCH	THIRD ANGLE PROJECTION	
		4 PLACES ± --- ± ---	mm	INCH	DRAWN BY RCM	DATE 1992/02/14	TITLE <b>MALE CONNECTOR TERMINAL, VIBRAKRIMP .250 X .032 TAB</b> <b>MOLEX INCORPORATED</b>			
		3 PLACES ± --- ± .005			CHECKED BY RWD	DATE 1992/02/14				
		2 PLACES ± 0.13 ± .01			APPROVED BY RWD	DATE 1992/02/14	MATERIAL NO. SEE CHART	DOCUMENT NO. SD-19024-001	SHEET NO. 1 OF 1	
1 PLACE ± 0.25 ± ---			ANGULAR ± 1/2°		DRAFT WHERE APPLICABLE MUST REMAIN WITHIN DIMENSIONS					