

PLEASE CHECK WWW.MOLEX.COM FOR LATEST PART INFORMATION

Part Number: [0197134001](#)
Status: **Active**
Description: PCB Tab Right Angle Quick Disconnect, Male, for Wire, Box, Tab 6.35mm (.250") x 0.81mm (.032")

Documents:

[Drawing \(PDF\)](#) [RoHS Certificate of Compliance \(PDF\)](#)
[Product Specification PS-19902-010 \(PDF\)](#)

Agency Certification

UL E79133

General

Product Family Quick Disconnects
 Series [19713](#)
 Crimp Quality Equipment Yes
 Product Name PCB Tab
 Type Quick Disconnect

Physical

Barrel Type Closed
 Gender Male
 Glow-Wire Compliant No
 Insulation None
 Lock to Mating Part None
 Material - Metal Brass
 Material - Plating Mating Tin
 Material - Plating Termination Tin
 Orientation PCB Flag Tab
 Packaging Type Bag
 Plating min: Mating (µin) 150
 Plating min: Mating (µm) 3.75
 Plating min: Termination (µin) 150
 Plating min: Termination (µm) 3.75
 Polarized to Mating Part No
 Tab Thickness 0.81mm (.032")
 Tab Width 6.35mm (.250")
 Wire Insulation Diameter N/A
 Wire Size AWG N/A

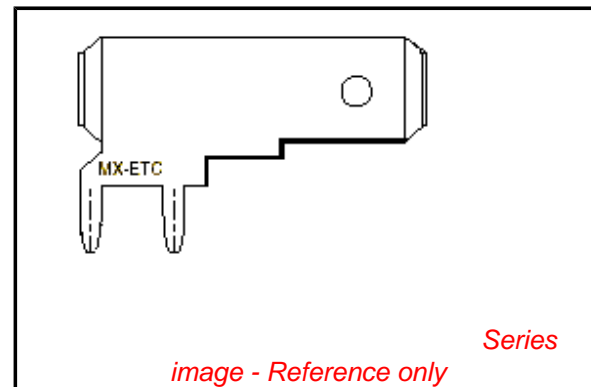
Electrical

Voltage - Maximum N/A

Material Info

Reference - Drawing Numbers

Product Specification PS-19902-010



EU RoHS

ELV and RoHS Compliant
REACH SVHC Contains SVHC: No
Halogen-Free Status

China RoHS



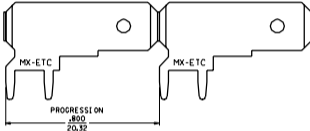
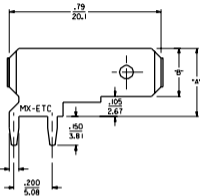
Need more information on product environmental compliance?

Email productcompliance@molex.com
 For a multiple part number RoHS Certificate of Compliance, [click here](#)

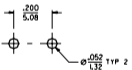
Please visit the [Contact Us](#) section for any non-product compliance questions.

Search Parts in this Series
[19713Series](#)

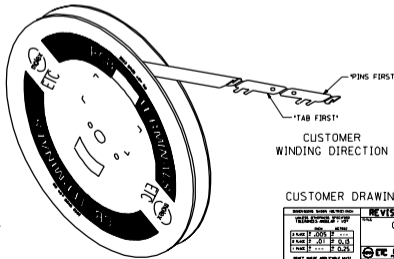
PIN ORIENTATION	MATERIAL NUMBER	ENGINEERING NUMBER	CUSTOMER NUMBER	CARRIER	PLATING SEE NOTE 6 & 7.	DIMENSION "A"	DIMENSION "B"
TAB FIRST	197134001	19713-4001	4000	LOOSE	TIN/LEAD	.356	.250
TAB FIRST	197134003	19713-4003	-	STRIP	TIN/LEAD	.356	.250
PINS FIRST	197134004	19713-4004	-	STRIP	TIN/LEAD	.356	.250



ISOMETRIC VIEW



RECOMMENDED P.W.B. HOLE LAYOUT



CUSTOMER WINDING DIRECTION

CUSTOMER DRAWING

- NOTES:
1. BARE EDGES PERMISSIBLE AT CARRIER CUT OFF.
 2. MATERIAL: BRASS.
 3. MATERIAL THICKNESS: .032 +.001/-0.013 ±0.031
 4. TAB CONFORMS TO NEMA SPECIFICATIONS.
 5. ALL DIMENSIONS AND NOTES ARE REFERENCE ONLY UNLESS NOTED.
 6. PLATING: 90/10 TIN LEAD 1oz/3.8M IN MIN THICKNESS.
 7. FINISH: MATTE

REV	REVISIONS
F	CHANGED FINISH ETC00010121 BRI 09/21/2000
E	FINISH CHANGE ETC00010117 2000/08/29 MEB
D	ADDED ORIENTATION ETC00010110 08/16/2000 BPE
C	ADD PART NO. 08/26/00 ET1999-0262
B	REMOVE NON-PLATED PARTS FROM CARRIER ETC00353 ET/0/0 JH
A	RELEASE TO CUSTOMER ETB0108 09/05/00 JH

REVISIONS

REVISE ONLY ON CAD SYSTEM

QUICK DISCONNECT
PCB MOUNTABLE
.250 X .032 TAB

ETC INC. PART NO. SD-19713-400
1 OF 1 98/04/28

SEE CHART

DATE: JH BY: RWD
TIN: 01/00/00