

**PLEASE CHECK WWW.MOLEX.COM FOR LATEST PART INFORMATION**

**Part Number:** [0877153909](#)

**Status:** **Active**

**Overview:**

**Description:** 1.00mm (.039") Pitch, PCI Express\* Connector, 230 Circuits, Nylon 4/6 Glass-filled, Black Housing, Phosphor Bronze, 0.38µm (15µ") Gold (Au) Plating, with Plastic Pegs, 3.00mm (.118") Solder tail, Lead Free

**Agency Certification**

CSA LR19980

**General**

Product Family Edge Card Connectors  
Series 87715  
Component Type Edgecard to PCB  
Overview pci\_express\_card\_edge\_connector  
Product Name PCI Express\*

**Physical**

Circuits (Loaded) 230  
Circuits (maximum) 230  
Circuits Detail All Signal  
Durability (mating cycles max) 50  
Entry Angle Vertical (Top Entry)  
Flammability 94V-0  
Keying to Mating Part Yes  
Material - Plating Mating Gold  
Material - Plating Termination Tin-Lead  
PC Tail Length (in) 0.118 In  
PC Tail Length (mm) 3.00 mm  
PCB Locator Yes  
PCB Retention Yes  
PCB Thickness Recommended (in) 0.093 In  
PCB Thickness Recommended (mm) 2.40 mm  
Packaging Type Tray  
Pitch - Mating Interface (in) 0.039 In  
Pitch - Mating Interface (mm) 1.00 mm  
Pitch - Term. Interface (in) 0.039 In  
Pitch - Term. Interface (mm) 1.00 mm  
Plating min: Mating (µin) 15  
Plating min: Mating (µm) 0.38  
Polarized to Mating Part Yes  
Temperature Range - Operating 65°C  
Termination Interface: Style Through Hole

**Electrical**

Current - Maximum per Contact 1.1A  
Voltage - Maximum 50V AC (RMS)/DC

**Solder Process Data**

Lead-free Process Capability Wave Capable (TH only)  
Process Temperature max. C 260

**Material Info**

**Reference - Drawing Numbers**

Packaging Specification PK-87715-202  
Product Specification PS-87715-202

**EU RoHS**

**ELV and RoHS  
Compliant**

**REACH SVHC**

Not Reviewed

**Halogen-Free**

**Status**

**Not Halogen-Free**

**China RoHS**



**Need more information on product  
environmental compliance?**

Email [productcompliance@molex.com](mailto:productcompliance@molex.com)  
For a multiple part number RoHS Certificate of  
Compliance, [click here](#)

Please visit the [Contact Us](#) section for any  
non-product compliance questions.

**Search Parts in this Series**

87715Series

**Mates With**

PCI Express Card

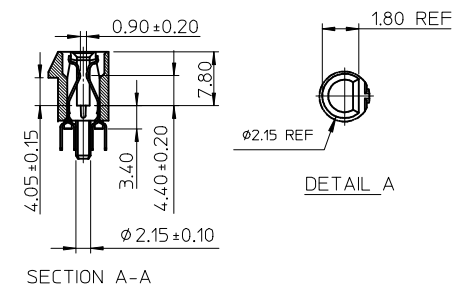
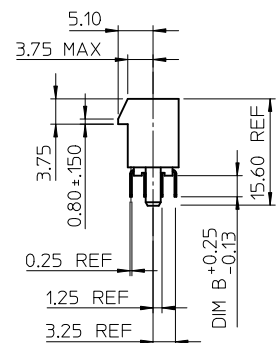
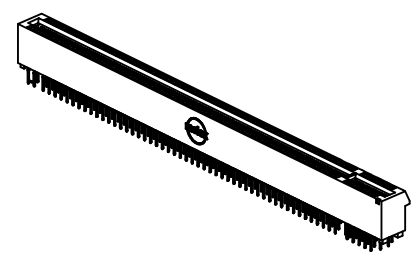
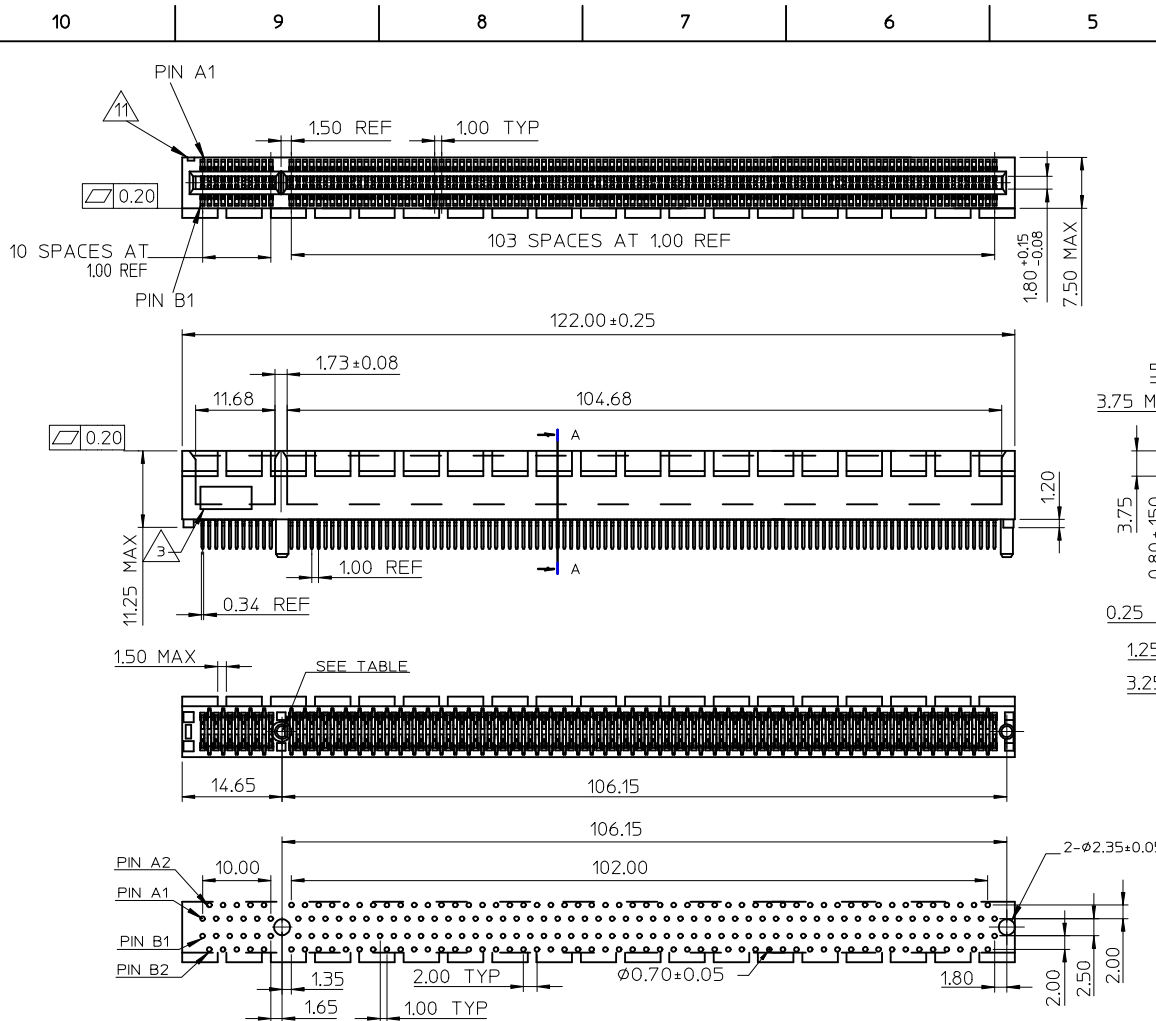
Sales Drawing  
Test Summary

SD-87715-202  
TS-87715-202

\* PCI Express is a registered trademark of PCI-SIG®

This document was generated on 06/04/2010

**PLEASE CHECK [WWW.MOLEX.COM](http://WWW.MOLEX.COM) FOR LATEST PART INFORMATION**



- NOTES:
- 1.MATERIALS:  
1-1.HOUSING:SEE TABLE GLASS FIBER FILLED UL94V-0  
COLOR:SEE TABLE  
1-2.CONTACT:SEE TABLE
  - 2.PLATING:  
2-1.CONTACT AREA: GOLD, THICKNESS : SEE TABLE  
2-2.SOLDER TAIL: 100 MICROINCH MIN TIN  
2-3.UNDER PLATING: 50 MICROINCH MIN NICKEL OVERALL
  - 3.DATE CODE:TO BE PRINTED
  - 4.PRODUCT SPECIFICATION REFER TO PS-87715-200
  - 5.PACKAGE SPECIFICATION REFER TO PK-87715-202
  - 6.TEST SUMMARY:REFER TO TS-87715-202
  - 7.LEAD FREE AND RoHS COMPLIANT PRODUCT.

MOLEX P/N	CIRCUIT SIZE	HOUSING MATERIAL	HOUSING COLOR	TERMINAL MATERIAL	CONTACT PLATING	DIM B
87715-3908						2.54
87715-3909	230	NYLON 46	BLACK	PHOSPHOR BROZNE	15 MNCH	3.00
87715-3999					30 MNCH	3.00

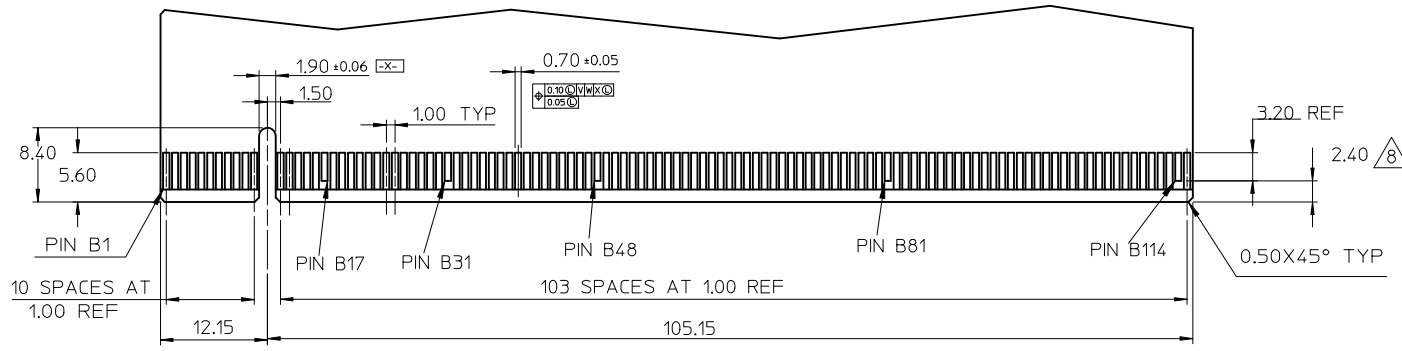
ADD P/N, NOTE 2  
 EC NO: S2010-0318  
 DRWN: JESSIECHUA 2009/10/14  
 CHKD: KSSHANITA 2009/10/14  
 APPR: NAGESHKN 2009/10/15

QUALITY SYMBOLS	DESCRIPTION
$F_A = 0$	
$F_C = 0$	
$F_P = 0$	

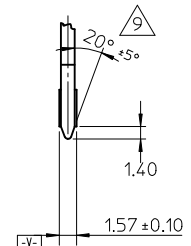
GENERAL TOLERANCES (UNLESS SPECIFIED)	DIMENSION STYLE	
	mm	INCH
4 PLACES	± ---	± ---
3 PLACES	± ---	± ---
2 PLACES	± 0.25	± ---
1 PLACE	± 0.25	± ---
ANGULAR ± 3 °		

DRAWN BY		DATE	TITLE
TOM		2003/12/25	1.0 EDGE CARD 230 CKTS VERTICAL DIP CONNECTOR (LEAD FREE VERSION)
CHECKED BY		DATE	
SAM SIN		2003/12/25	
APPROVED BY		DATE	
WLISON		2003/12/25	
MATERIAL NO.		DOCUMENT NO.	
SEE TABLE		SD-87715-202	

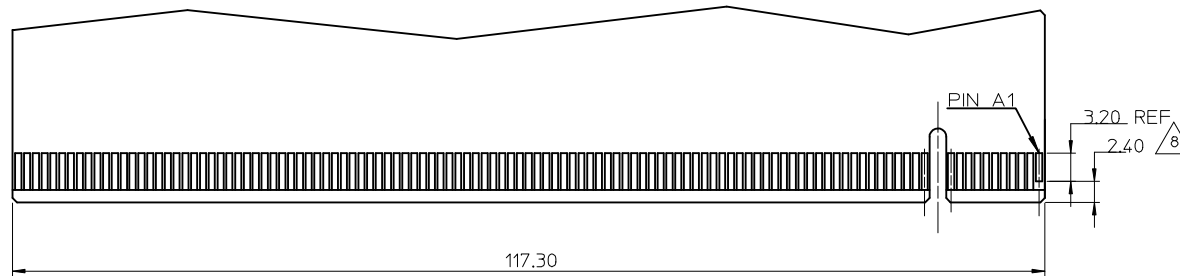
SCALE	DESIGN UNITS	THIRD ANGLE PROJECTION
NTS	METRIC	
MOLEX INCORPORATED		
SHEET NO.		1 OF 2



DAUGHTER CARD  
PRIMARY (COMPONENT) SIDE



ACROSS PADS



DAUGHTER CARD  
SECONDARY (SOLDER) SIDE

I/O PANEL DIRECTION

NOTE:

- 8 NO TIE BAR PERMITTED FROM CARD EDGE TO LEADING EDGE OF PAD FOR PIN A1, B17, B31, B48, B81, B114
- 9 CHAMFER EDGES MUST BE FREE OF CUTTING BURRS.
- 10. THE MATED CARD COMPLY WITH PCI EXPRESS CARD REV 1.0 STANDARD
- 11. PIN 1 IDENTIFIER

ADD P/N, NOTE 2 EC NO: S2010-0318 DRWN: JESSIECHUA 2009/10/14 CHKD: KSSHANITA 2009/10/14 APPR: NAGESHKN 2009/10/15	QUALITY SYMBOLS	GENERAL TOLERANCES (UNLESS SPECIFIED)		DIMENSION STYLE MM ONLY		SCALE NTS	DESIGN UNITS METRIC	THIRD ANGLE PROJECTION
	$F_A=0$	mm	INCH	DRAWN BY TOM	DATE 2003/12/25	TITLE 1.0 EDGE CARD 230 CKTS VERTICAL DIP CONNECTOR (LEAD FREE VERSION)		
	$F_C=0$	4 PLACES ± ---	± ---	CHECKED BY SAM SIN	DATE 2003/12/25	MOLEX INCORPORATED		
	$F_P=0$	3 PLACES ± ---	± ---	APPROVED BY WLISON	DATE 2003/12/25	MATERIAL NO.	DOCUMENT NO.	SHEET NO.
		2 PLACES ± 0.25	± ---	DRAFT WHERE APPLICABLE MUST REMAIN WITHIN DIMENSIONS		SEE TABLE	SD-87715-202	2 OF 2
		1 PLACE ± 0.25	± ---	SIZE A3		THIS DRAWING CONTAINS INFORMATION THAT IS PROPRIETARY TO MOLEX INCORPORATED AND SHOULD NOT BE USED WITHOUT WRITTEN PERMISSION		
		ANGULAR ± 3 °						