

**PLEASE CHECK WWW.MOLEX.COM FOR LATEST PART INFORMATION**

**Part Number:** [0192110002](#)  
**Status:** **Active**  
**Overview:** [wire\\_pins](#)  
**Description:** Krimptite™ Wire Pin Terminal for 12-10 AWG Wire, Mylar Tape Carrier

**Documents:**

[Drawing \(PDF\)](#) [RoHS Certificate of Compliance \(PDF\)](#)

**Agency Certification**

CSA LR18689  
 UL E32244

**General**

Product Family Crimp Terminals  
 Series [19211](#)  
 Comments Pin Length 11.43mm (.450")  
 Crimp Quality Equipment Yes  
 Overview [wire\\_pins](#)  
 Product Name Wire Pin

**Physical**

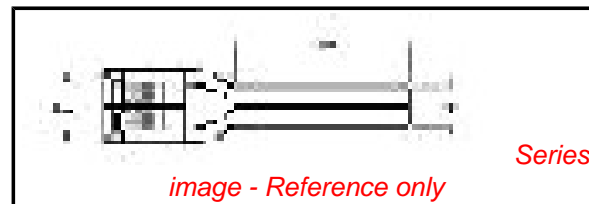
Gender Male  
 Material - Metal Copper  
 Material - Plating Mating Tin  
 Material - Plating Termination Tin  
 Packaging Type Adhesive Tape on Reel  
 Plating min: Mating (µin) 30  
 Plating min: Mating (µm) 0.75  
 Plating min: Termination (µin) 30  
 Plating min: Termination (µm) 0.75  
 Termination Interface: Style Crimp or Compression  
 Wire Insulation Diameter 3.45mm (.136") max.  
 Wire Size AWG 10, 12  
 Wire Size mm² 12 TO 10

**Material Info**

Old Part Number WP-1210T

**Reference - Drawing Numbers**

Sales Drawing SD-19211-002



**EU RoHS**

**ELV and RoHS Compliant**  
**REACH SVHC Contains SVHC: No**  
**Halogen-Free Status**  
**Not Reviewed**

**China RoHS**



**Need more information on product environmental compliance?**

Email [productcompliance@molex.com](mailto:productcompliance@molex.com)  
 For a multiple part number RoHS Certificate of Compliance, [click here](#)

Please visit the [Contact Us](#) section for any non-product compliance questions.

**Search Parts in this Series**

[19211Series](#)

**Application Tooling | FAQ**

*Tooling specifications and manuals are found by selecting the products below. Crimp Height Specifications are then contained in the Application Tooling Specification document.*

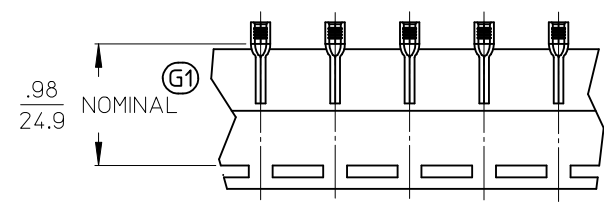
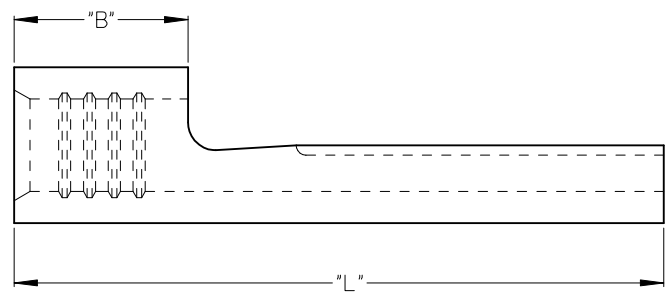
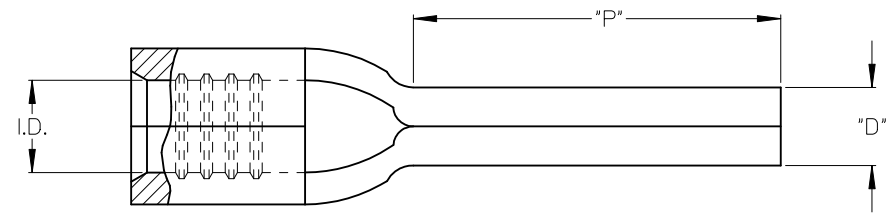
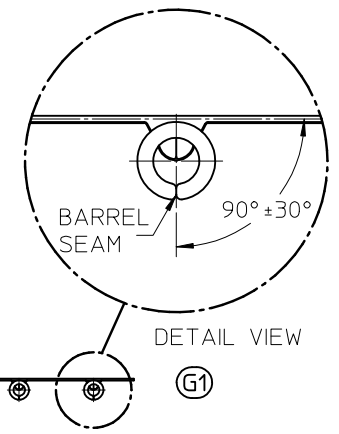
**Global**

Description	Product #
ATP Perishable Tool Kit, Used in ATP Presses that Process Product on Tape	<a href="#">0190270088</a>
Mini-Mac™ Applicator	<a href="#">0638851000</a>

MATERIAL NO. LOOSE PIECE	ENGINEERING NO. LOOSE PIECE	MATERIAL NO. TAPE MOUNTED	ENGINEERING NO. TAPE MOUNTED	AWG	"I.D." MIN	"B" MIN	"L" MAX	"P" MIN	"D" ± $\frac{.01}{0.3}$
192110003	WP-1218	192110004	WP-1218T	22-18	.058/1.47	.165/ 4.19	.68/ 17.3	.35/ 8.9	.078/ 1.98
192110005	WP-1614	192110006	WP-1614T	16-14	.081/2.06	.165/ 4.19	.68/ 17.3	.35/ 8.9	.078/ 1.98
192110001	WP-1210	192110002	WP-1210T	12-10	.128/3.25	.230/ 5.84	.82/ 20.8	.41/ 10.4	.107/ 2.72

G1

G1 G1 G1 G1



PARTS ON TAPE

# SALES DRAWING

- NOTES:
- MATERIAL: COPPER
  - FINISH: ELECTRO-TIN PLATING
  - PARTS ARE ROHS COMPLIANT.

G1

CORRECTED, ROT SPEC EC NO: G1 DRAWN: ETHRODAHL CHKD: JMACNEIL APPR:	DESCRIPTION 2009/01/16 2010/03/01	QUALITY SYMBOLS	GENERAL TOLERANCES (UNLESS SPECIFIED)	DIMENSION STYLE IN/MM	SCALE	DESIGN UNITS INCH	THIRD ANGLE PROJECTION																												
		$\nabla=0$ $\nabla=0$	<table border="1"> <thead> <tr> <th></th> <th>mm</th> <th>INCH</th> </tr> </thead> <tbody> <tr> <td>4 PLACES</td> <td>± ---</td> <td>± ---</td> </tr> <tr> <td>3 PLACES</td> <td>± ---</td> <td>± ---</td> </tr> <tr> <td>2 PLACES</td> <td>± ---</td> <td>± ---</td> </tr> <tr> <td>1 PLACE</td> <td>± ---</td> <td>± ---</td> </tr> </tbody> </table>		mm	INCH	4 PLACES	± ---	± ---	3 PLACES	± ---	± ---	2 PLACES	± ---	± ---	1 PLACE	± ---	± ---	<table border="1"> <thead> <tr> <th>DRAWN BY</th> <th>DATE</th> </tr> </thead> <tbody> <tr> <td>B. ENDERLE</td> <td>02/14/02</td> </tr> <tr> <th>CHECKED BY</th> <th>DATE</th> </tr> <tr> <td>H. BIETZEL</td> <td>02/14/02</td> </tr> <tr> <th>APPROVED BY</th> <th>DATE</th> </tr> <tr> <td>R. DEROSS</td> <td>02/14/02</td> </tr> </tbody> </table>	DRAWN BY	DATE	B. ENDERLE	02/14/02	CHECKED BY	DATE	H. BIETZEL	02/14/02	APPROVED BY	DATE	R. DEROSS	02/14/02	TITLE	KRIMPTITE WIRE PIN TERMINALS 22-18, 16-14, 12-10 AWG		MOLEX INCORPORATED
			mm	INCH																															
		4 PLACES	± ---	± ---																															
3 PLACES	± ---	± ---																																	
2 PLACES	± ---	± ---																																	
1 PLACE	± ---	± ---																																	
DRAWN BY	DATE																																		
B. ENDERLE	02/14/02																																		
CHECKED BY	DATE																																		
H. BIETZEL	02/14/02																																		
APPROVED BY	DATE																																		
R. DEROSS	02/14/02																																		
DRAFT WHERE APPLICABLE MUST REMAIN WITHIN DIMENSIONS	SEE CHART	MATERIAL NO.	DOCUMENT NO. SD-19211-002	SHEET NO. 1 OF 1																															
THIS DRAWING CONTAINS INFORMATION THAT IS PROPRIETARY TO MOLEX INCORPORATED AND SHOULD NOT BE USED WITHOUT WRITTEN PERMISSION																																			
THIS DRAWING CONTAINS INFORMATION THAT IS PROPRIETARY TO MOLEX INCORPORATED AND SHOULD NOT BE USED WITHOUT WRITTEN PERMISSION																																			