

PLEASE CHECK WWW.MOLEX.COM FOR LATEST PART INFORMATION

Part Number: **0352001000**
Status: **Active**
Description: 1.00mm (.039") Diameter Wire-to-Board Receptacle Housing - Dual Row, 10 Circuits

Documents:

[3D Model](#)
[Drawing \(PDF\)](#)
[Drawing \(PDF\)](#)

[Product Specification PS-35354-003 \(PDF\)](#)
[RoHS Certificate of Compliance \(PDF\)](#)

General

Product Family Crimp Housings
 Series 35200
 Product Name N/A

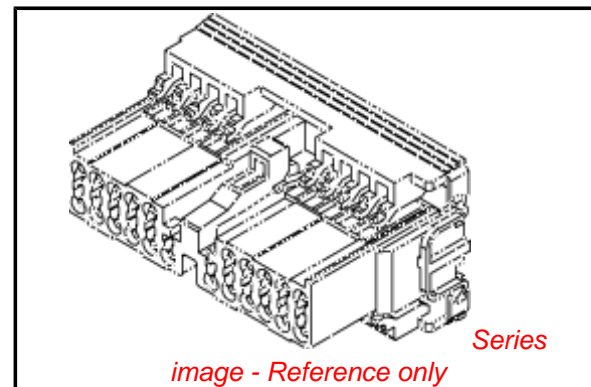
Physical

Circuits (maximum) 10
 Color - Resin Natural
 Gender Female
 Glow-Wire Compliant No
 Material - Resin Polyester
 Number of Rows 2
 Packaging Type Bag
 Panel Mount No
 Pitch - Mating Interface (in) 0.039 In
 Pitch - Mating Interface (mm) 1.00 mm
 Stackable No
 Temperature Range - Operating -40°C to +120°C

Material Info

Reference - Drawing Numbers

Product Specification PS-35354-003
 Sales Drawing SD-35200-1000



EU RoHS

**ELV and RoHS
 Compliant**
REACH SVHC
 Not Reviewed
**Halogen-Free
 Status**

China RoHS



**Need more information on product
 environmental compliance?**

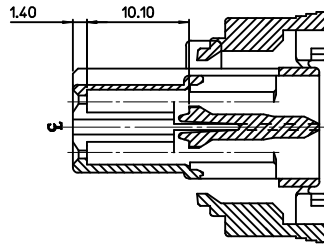
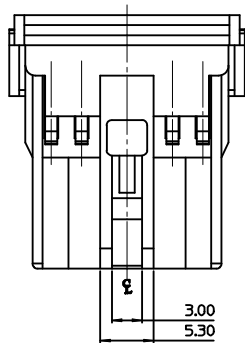
Email productcompliance@molex.com
 For a multiple part number RoHS Certificate of
 Compliance, [click here](#)

Please visit the [Contact Us](#) section for any
 non-product compliance questions.

Search Parts in this Series
 35200Series

Mates With
 35356|35009|35358

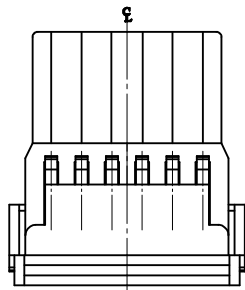
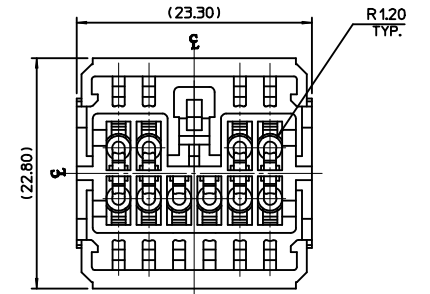
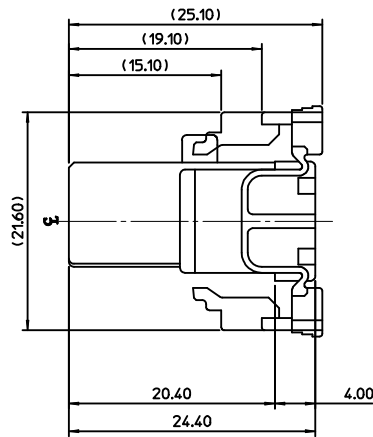
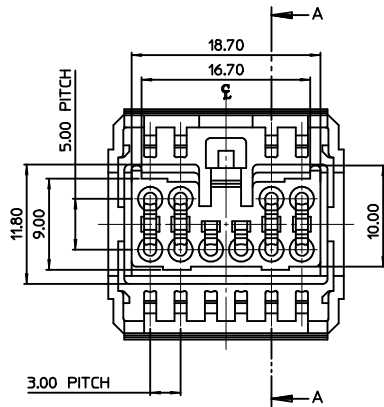
Use With
 35403



SECTION A-A

NOTE

- 1. MATERIAL : POLYESTER(PBT)
- 2. APPLICABLE TERMINAL : 35403-1002



<TABLE 1>

352001000	35200-1000
MATERIAL NO.	ORDER NO.

<p>NEW RELEASED EC NO:K000200000400 DRWN:HECHANGRHO 2000/02/11 CHKD: 2000/02/11 APPR: CWLEE 2000/02/11</p>	<p>QUALITY SYMBOLS ▽=0 ◻=0</p>	<p>GENERAL TOLERANCES (UNLESS SPECIFIED)</p>		<p>DIMENSION STYLE MM ONLY</p>		<p>SCALE 2:1</p>	<p>DESIGN UNITS METRIC</p>	<p>THIRD ANGLE PROJECTION</p>														
		<table border="1"> <tr> <th></th> <th>mm</th> <th>INCH</th> </tr> <tr> <td>4 PLACES</td> <td>± ---</td> <td>± ---</td> </tr> <tr> <td>3 PLACES</td> <td>± ---</td> <td>± ---</td> </tr> <tr> <td>2 PLACES</td> <td>± 0.30</td> <td>± ---</td> </tr> <tr> <td>1 PLACE</td> <td>± 0.3</td> <td>± ---</td> </tr> </table>		mm	INCH	4 PLACES	± ---	± ---	3 PLACES	± ---	± ---	2 PLACES	± 0.30	± ---	1 PLACE	± 0.3	± ---	<p>DRAWN BY</p>	<p>DATE</p>	<p>TITLE 1.0 CIRCULOCK FEMALE HS'G 10P</p>		
			mm	INCH																		
		4 PLACES	± ---	± ---																		
3 PLACES	± ---	± ---																				
2 PLACES	± 0.30	± ---																				
1 PLACE	± 0.3	± ---																				
<p>ANGULAR ± 1 °</p>	<p>CHECKED BY</p>	<p>DATE</p>																				
<p>DRAFT WHERE APPLICABLE MUST REMAIN WITHIN DIMENSIONS</p>	<p>APPROVED BY</p>	<p>DATE</p>	<p>MATERIAL NO. SEE TABLE 1</p>			<p>DOCUMENT NO. SD-35200-1000</p>	<p>SHEET NO. 1 OF 1</p>															
<p>SIZE A3</p>			<p>THIS DRAWING CONTAINS INFORMATION THAT IS PROPRIETARY TO MOLEX INCORPORATED AND SHOULD NOT BE USED WITHOUT WRITTEN PERMISSION</p>																			