

PLEASE CHECK WWW.MOLEX.COM FOR LATEST PART INFORMATION

Part Number: **0430250400**
Status: **Active**
Overview: microfit_30
Description: 3.00mm (.118") Pitch Micro-Fit 3.0™ Receptacle Housing, Dual Row, 4 Circuits

Documents:

[3D Model](#) [Product Specification PS-43045 \(PDF\)](#)
[Drawing \(PDF\)](#) [RoHS Certificate of Compliance \(PDF\)](#)

Agency Certification

CSA	LR19980
TUV	R72081037
UL	E29179

General

Product Family	Crimp Housings
Series	<u>43025</u>
Comments	Glow Wire Equivalent Part Number <u>430250408</u> . Polarized to Mating Part
Overview	<u>microfit_30</u>
Product Literature Order No	USA-106
Product Name	Micro-Fit 3.0™

Physical

Circuits (maximum)	4
Circuits Detail	4
Color - Resin	Black
Flammability	94V-0
Gender	Female
Glow-Wire Compliant	No
Keying to Mating Part	None
Lock to Mating Part	Yes
Material - Resin	Polyester
Number of Rows	2
Packaging Type	Bag
Panel Mount	No
Pitch - Mating Interface (in)	0.118 In
Pitch - Mating Interface (mm)	3.00 mm
Polarized to Mating Part	Yes
Stackable	No
Temperature Range - Operating	-40°C to +105°C

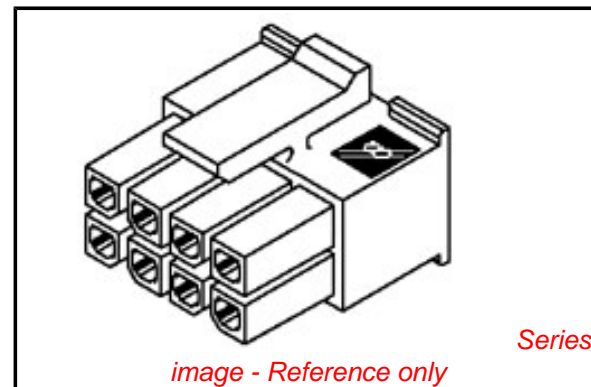
Electrical

Current - Maximum per Contact	5A
-------------------------------	----

Material Info

Reference - Drawing Numbers

Packaging Specification	PK-43025-001
Product Specification	PS-43045, RPS-43045-001, RPS-43045-003, RPS-43045-004
Sales Drawing	SDA-43025-****
Test Summary	TS-43045-001



EU RoHS

ELV and RoHS Compliant
REACH SVHC Contains SVHC: No
Halogen-Free Status

China RoHS



Not Halogen-Free

Need more information on product environmental compliance?

Email productcompliance@molex.com
 For a multiple part number RoHS Certificate of Compliance, [click here](#)

Please visit the [Contact Us](#) section for any non-product compliance questions.

Search Parts in this Series

43025Series

Mates With

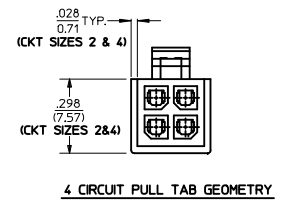
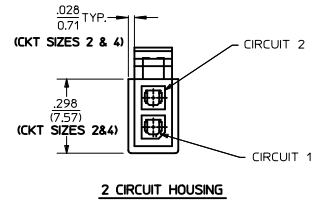
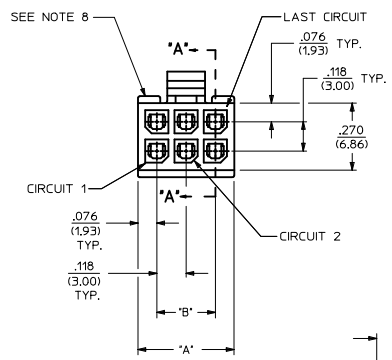
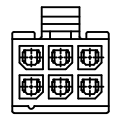
Micro-Fit 3.0™ Plug Housing 43020. Micro-Fit 3.0™ Header 43045. Micro-Fit 3.0™ Test Plug 44242

Use With

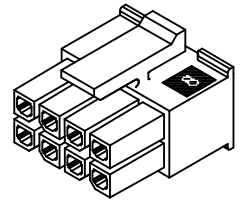
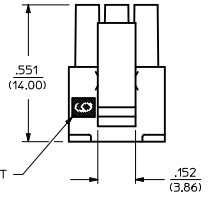
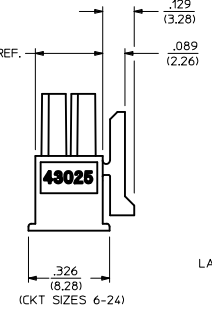
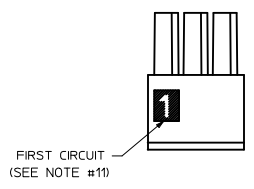
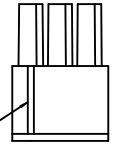
Micro-Fit 3.0™ Crimp Terminal 43030

PLEASE CHECK WWW.MOLEX.COM FOR LATEST PART INFORMATION

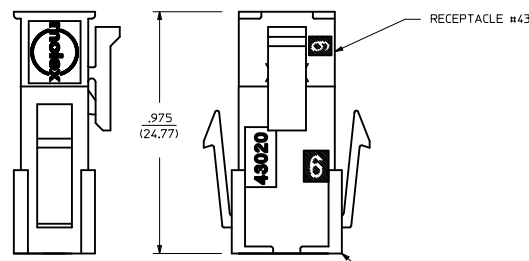
PART CHARACTERISTICS		CKT. NO.	DIM. 'A'	DIM. 'B'
NUMBER OF POSITION	ASSEMBLY ITEM NUMBER			
02	43025-0200	2	.152/(3.86)	N/A
04	43025-0400	4	.270/(6.85)	.118/(3.00)
06	43025-0600	6	.388/(9.85)	.236/(6.00)
08	43025-0800	8	.506/(12.85)	.354/(9.00)
10	43025-1000	10	.624/(15.85)	.472/(12.00)
12	43025-1200	12	.742/(18.85)	.591/(15.00)
14	43025-1400	14	.860/(21.85)	.709/(18.00)
16	43025-1600	16	.978/(24.85)	.827/(21.00)
18	43025-1800	18	1.096/(27.85)	.945/(24.00)
20	43025-2000	20	1.215/(30.85)	1.063/(27.00)
22	43025-2200	22	1.333/(33.85)	1.181/(30.00)
24	43025-2400	24	1.451/(36.85)	1.299/(33.00)



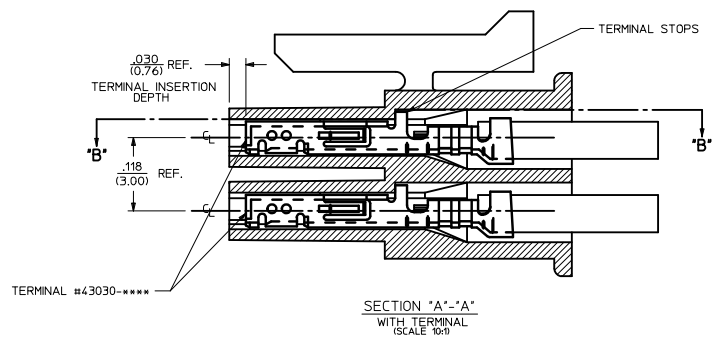
HOUSING SHOWN WITH OPTIONAL FIRST CIRCUIT IDENTIFIER RIB (SEE NOTE #11)



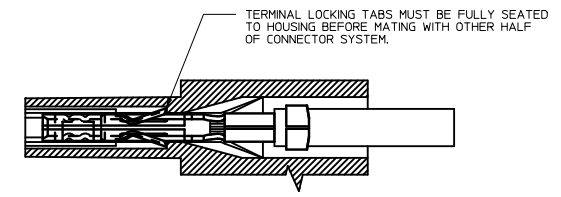
RECEPTACLE ISO VIEW (8 CIRCUIT SHOWN) (SEE NOTE 9 FOR TESTING)



MATED MICRO-FIT CONNECTOR



SECTION "A"- "A" WITH TERMINAL (SCALE 10:1)



SECTION "B"- "B" (SCALE 10:1)

NOTES:
 1) HOUSING MATERIAL: UNFILLED POLYESTER, RATED UL, 94V-0, COLOR IS BLACK.
 2) FINISH: N/A
 3) PRODUCT SPECIFICATION: PS-43045
 4) PACKAGING SPECIFICATION: PK-43025-001
 5) THIS RECEPTACLE MATES WITH 43020, 43045.
 6) THIS RECEPTACLE TO BE USED WITH MOLEX FEMALE TERMINAL #43030-****. SEE SECTION "A"- "A" FOR TERMINAL ORIENTATION IN HOUSING.
 7) FOR OVERMOLDING PARAMETERS SEE ENGINEERING SPECIFICATION #SDS-43025-1000.
 8) TOP PULL TABS ARE NOT AVAILABLE ON 2 AND 4 CIRCUIT PARTS.
 9) MOLEX RECOMMENDS THE USE OF MICRO-FIT TEST PLUG, SERIES NO. 44242-**** WHENEVER TESTING IS PERFORMED. TEST PLUGS MUST NOT BE USED FOR MAKE OR BREAK UNDER LOAD. MOLEX DOES NOT RECOMMEND USING STANDARD MATING COMPONENTS FOR HARNESS TESTING PURPOSES.
 10) SOME HOUSINGS MAY HAVE A SMALL GATE BLEMISH NEAR THE GATE THAT DOES NOT AFFECT FUNCTIONALITY.
 11) HOUSINGS MAY HAVE EITHER AN IDENTIFIER RIB OR "1" SYMBOL ENGRAVE TO INDICATE CIRCUIT #1.
 12) THIS PART CONFORMS TO CLASS 'B' REQUIREMENTS OF COSMETIC SPECIFICATION PS-45499-002.

ADD PK SPEC. NOTES EC NO: UCP2010-0075 DPC/MAS/SOISEK 2009/11/18 CHIKO/BELL 2009/11/25 APPR/ESH/TH 2009/11/30 M1	QUALITY SYMBOLS ▽=0 ▽=0	GENERAL TOLERANCES (UNLESS SPECIFIED) <table border="1"> <tr><th></th><th>mm</th><th>INCH</th></tr> <tr><td>4 PLACES ±</td><td>±</td><td></td></tr> <tr><td>3 PLACES ±</td><td>±.010</td><td></td></tr> <tr><td>2 PLACES ±</td><td>±.025</td><td>±.014</td></tr> <tr><td>1 PLACE ±</td><td>±.035</td><td>±.014</td></tr> </table> ANGULAR ±1/2°		mm	INCH	4 PLACES ±	±		3 PLACES ±	±.010		2 PLACES ±	±.025	±.014	1 PLACE ±	±.035	±.014	DIMENSION STYLE IN/MM	SCALE 4:1	DESIGN UNITS METRIC	THIRD ANGLE PROJECTION
		mm	INCH																		
	4 PLACES ±	±																			
	3 PLACES ±	±.010																			
2 PLACES ±	±.025	±.014																			
1 PLACE ±	±.035	±.014																			
DRAWN BY A.F.G.	DATE 1993/01/14	CHECKED BY B.A.P.	DATE 1993/01/14	APPROVED BY R.A.S.	DATE 1993/01/14	TITLE MICRO-FIT (3.0) 2 THRU 24 CIRCUIT RECEPTACLE															
MATERIAL NO.	DOCUMENT NO.	MOLEX INCORPORATED	SDA-43025-****	SHEET NO. 1 OF 1	SIZE D	THIS DRAWING CONTAINS INFORMATION THAT IS PROPRIETARY TO MOLEX INCORPORATED AND SHOULD NOT BE USED WITHOUT WRITTEN PERMISSION															
DRAFT WHERE APPLICABLE MUST REMAIN WITHIN DIMENSIONS																					