

PLEASE CHECK WWW.MOLEX.COM FOR LATEST PART INFORMATION

Part Number: [0039306107](#)
Status: **Active**
Overview: [minifit_jr](#)
Description: 4.20mm (.165") Pitch Mini-Fit Jr.™ Header, Dual Row, Vertical, with Snap-in Plastic Peg PCB Lock, 10 Circuits, PA Polyamide Nylon 6/6, UL 94V-2, Tin (Sn) Over Nickel (Ni) Plating, with Drain Holes

Documents:

[3D Model](#) [Product Specification PS-5556-001 \(PDF\)](#)
[Drawing \(PDF\)](#) [RoHS Certificate of Compliance \(PDF\)](#)

Agency Certification

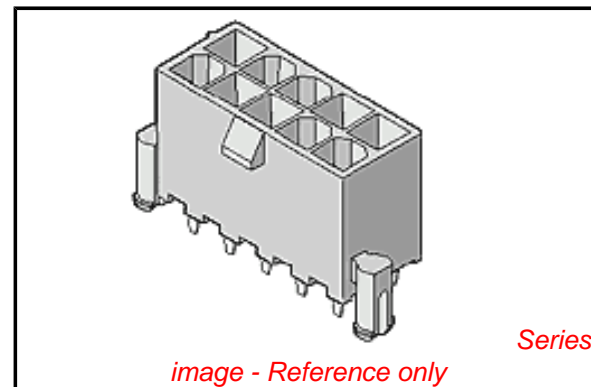
| | |
|-----|-----------|
| CSA | LR19980 |
| TUV | R72081037 |
| UL | E29179 |

General

| | |
|----------------|--|
| Product Family | PCB Headers |
| Series | 5566 |
| Application | Wire-to-Board |
| Comments | Current = 13A max. per circuit when header is mated to a receptacle loaded with 45750 Mini-Fit Plus HCS™ Crimp Terminal Crimped to to 16 AWG wire. . See Molex product specification PS-45750-001 for additional current de-rating information.. High Temperature, Square Pin, Solder Type |
| Overview | minifit_jr |
| Product Name | Mini-Fit Jr.™ |

Physical

| | |
|--------------------------------|----------|
| Breakaway | No |
| Circuits (Loaded) | 10 |
| Circuits (maximum) | 10 |
| Color - Resin | Natural |
| Durability (mating cycles max) | 30 |
| First Mate / Last Break | No |
| Flammability | 94V-2 |
| Glow-Wire Compliant | No |
| Guide to Mating Part | No |
| Keying to Mating Part | None |
| Lock to Mating Part | Yes |
| Material - Metal | Brass |
| Material - Plating Mating | Tin |
| Material - Plating Termination | Tin |
| Material - Resin | Nylon |
| Number of Rows | 2 |
| Orientation | Vertical |
| PC Tail Length (in) | 0.138 In |
| PC Tail Length (mm) | 3.50 mm |
| PCB Locator | Yes |
| PCB Retention | Yes |
| PCB Thickness Recommended (in) | 0.062 In |
| PCB Thickness Recommended (mm) | 1.60 mm |
| Packaging Type | Tray |
| Pitch - Mating Interface (in) | 0.165 In |
| Pitch - Mating Interface (mm) | 4.20 mm |



EU RoHS

ELV and RoHS Compliant
REACH SVHC
 Not Reviewed
Halogen-Free Status

China RoHS



Need more information on product environmental compliance?

Email productcompliance@molex.com
 For a multiple part number RoHS Certificate of Compliance, [click here](#)

Please visit the [Contact Us](#) section for any non-product compliance questions.

Search Parts in this Series

[5566Series](#)

Mates With

[5557](#) Mini-Fit Jr.™ Receptacle Housing

| | |
|--------------------------------|-----------------|
| Pitch - Term. Interface (in) | 0.165 In |
| Pitch - Term. Interface (mm) | 4.20 mm |
| Polarized to Mating Part | Yes |
| Polarized to PCB | Yes |
| Shrouded | Fully |
| Stackable | No |
| Surface Mount Compatible (SMC) | No |
| Temperature Range - Operating | -40°C to +105°C |
| Termination Interface: Style | Through Hole |

Electrical

| | |
|-------------------------------|------|
| Current - Maximum per Contact | 13A |
| Voltage - Maximum | 600V |

Solder Process Data

| | |
|--|------------------------|
| Duration at Max. Process Temperature (seconds) | 5 |
| Lead-free Process Capability | Wave Capable (TH only) |
| Max. Cycles at Max. Process Temperature | 1 |
| Process Temperature max. C | 235 |

Material Info

| | |
|-----------------|-----------|
| Old Part Number | 5566-10B2 |
|-----------------|-----------|

Reference - Drawing Numbers

| | |
|-------------------------|-----------------|
| Packaging Specification | PK-5566-001 |
| Product Specification | PS-5556-001 |
| Sales Drawing | SDA-5566-N*2*-* |
| Test Summary | TS-5556-002 |

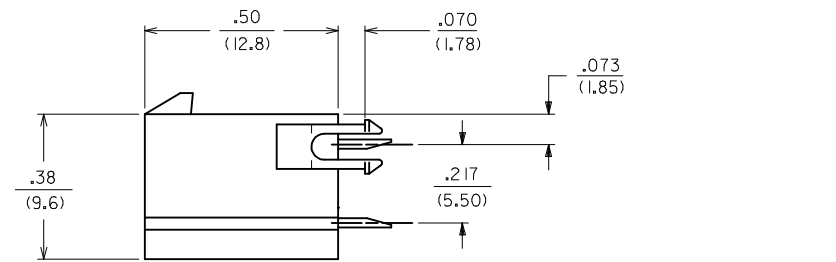
This document was generated on 05/21/2010

PLEASE CHECK WWW.MOLEX.COM FOR LATEST PART INFORMATION



NOTES:

- 1) HOUSING MATERIAL:
 - "BLANK" - NYLON 6/6, U.L. 94V-2, COLOR: NATURAL.
 - 210 - NYLON 6/6, U.L. 94V-0, COLOR: NATURAL.
 - BL - NYLON 6/6, U.L. 94V-2, COLOR: DYED BLACK.
- 2) TERMINAL MATERIAL: BRASS ALLOY 260
- 3) PART MATES WITH MINI-FIT JR. RECEPTACLE #5557.
- 4) PACKAGING: SEE CHARTS
- 5) MOUNTING OPTIONS:
 - "BLANK" - NO MOUNTING (SEE SD-5566-NA AND -NB SERIES DWGS.)
 - 2 - PEG MOUNT
- 6) TERMINAL PLATING:
 - "BLANK" - .000035/(.00090) MIN. TIN OVER .000020/(.00050) MIN. COPPER.
 - *GS - .000030/(.00076) MIN. SELECT GOLD .000100/(.00254) MIN. SELECT MATTE TIN OVER .000050/(.00127) MIN. NICKEL OVERALL.
 - *GS2 - .000015/(.00038) MIN. SELECT GOLD AND .000100/(.00254) MIN. SELECT MATTE TIN OVER .000050/(.00127) MIN. NICKEL OVERALL.
 - S - .000100/(.00254) MIN. TIN OVER .000050/(.00127) MIN. NICKEL.
- *THE PRIMARY SHIPPING CARTON WILL BE LABELED "COMPLIANT TO RoHS DIRECTIVE 2002/95/EC AND ELV ANNEX II OF DIRECTIVE 2000/53/EC."
- *CARTONS WITHOUT THIS LABEL MAY CONTAIN PRODUCT WITH TIN-LEAD PLATING.
- 7) PRODUCT SPECIFICATION AND PROCESSING PARAMETERS: SEE PS-5556-001
- 8) ANTI-SHINGLING RIB MAY OR MAY NOT APPEAR ON HOUSINGS.
- 9) CONNECTORS ARE NOT TO BE MATED OR UNMATED WHILE CIRCUITS ARE LIVE.
- 10) PARTS ARE NOT DESIGNED FOR CURRENT SHARING.



RECOMMENDED HOLE LAYOUT FOR .070/(1.78) MAX. THICK P. C. BOARD

VIEWED FROM COMPONENT SIDE

| CIRCUIT SIZE | DIM. "A" | DIM. "B" | DIM. "C" |
|--------------|-------------|-------------|---------------|
| 2 | — | .21 (5.4) | .370 (9.40) |
| 4 | .17 (4.2) | .38 (9.6) | .535 (13.60) |
| 6 | .33 (8.4) | .54 (13.8) | .701 (17.80) |
| 8 | .50 (12.6) | .71 (18.0) | .866 (22.00) |
| 10 | .66 (16.8) | .87 (22.2) | 1.031 (26.20) |
| 12 | .83 (21.0) | 1.04 (26.4) | 1.197 (30.40) |
| 14 | .99 (25.2) | 1.20 (30.6) | 1.362 (34.60) |
| 16 | 1.16 (29.4) | 1.37 (34.8) | 1.528 (38.80) |
| 18 | 1.32 (33.6) | 1.54 (39.0) | 1.693 (43.00) |
| 20 | 1.49 (37.8) | 1.70 (43.2) | 1.858 (47.20) |
| 22 | 1.65 (42.0) | 1.87 (47.4) | 2.024 (51.40) |
| 24 | 1.82 (46.2) | 2.03 (51.6) | 2.189 (55.60) |

LEGEND:



| | |
|-----------|----|
| 4 | R2 |
| 3 | R2 |
| 2 | R2 |
| 1 | R2 |
| SHT. REV. | |

| | | | | | | | |
|---|-----------------|---|---|--|--------------|------------------------|--|
| REVISED NOTES 8 EC NO: UCP2009-1336 DRAWN: JLOSTEMEIER 2008/11/24 CHKD: JBEL 2008/11/24 APPR: FSMITH 2008/11/24 | QUALITY SYMBOLS | GENERAL TOLERANCES (UNLESS SPECIFIED) | DIMENSION STYLE | SCALE | DESIGN UNITS | THIRD ANGLE PROJECTION | |
| | ▽=0 | mm INCH | IN/MM | 1:1 | METRIC | | |
| | ▽=0 | 4 PLACES ± --- ± --- 3 PLACES ± --- ± .015 2 PLACES ± 0.38 ± .015 1 PLACE ± 0.38 ± --- | DRAWN BY DATE RJF 8/19/87 | TITLE MINI-FIT JR. VERTICAL HEADER ASSEMBLIES WITH MOUNTING PEGS | | | |
| | | ANGULAR ±1/2° | CHECKED BY DATE GT 8/19/87 | MATERIAL NO. DOCUMENT NO. SHEET NO. SEE SHTS 2-4 SDA-5566-N*2*-* 1 OF 4 | | | |
| | | DRAFT WHERE APPLICABLE MUST REMAIN WITHIN DIMENSIONS | APPROVED BY DATE RAS 8/19/87 | | | | |
| | | | MATERIAL NO. DOCUMENT NO. SHEET NO. SDA-5566-N*2*-* 1 OF 4 | | | | |
| | | | THIS DRAWING CONTAINS INFORMATION THAT IS PROPRIETARY TO MOLEX INCORPORATED AND SHOULD NOT BE USED WITHOUT WRITTEN PERMISSION | | | | |

| | | | | | | | | | | | | | | | | |
|---|----------------|-------------|-------------------------|----|----------------|-----------------|-------------------------|---|----------------|---------------|-------------------------|---|----------------|-------------------|-------------------------|--|
| | 13 | 12 | 11 | 10 | 9 | 8 | 7 | 6 | 5 | 4 | 3 | 2 | 1 | | | |
| J | PLATING: | | 100 M.I. TIN | | PLATING: | | 100 M.I. TIN | | PLATING: | | 15 M.I. SELECT GOLD | | PLATING: | | 15 M.I. SELECT GOLD | |
| | DRAIN HOLES: | | WITHOUT DRAIN HOLES | | DRAIN HOLES: | | WITHOUT DRAIN HOLES | | DRAIN HOLES: | | WITHOUT DRAIN HOLES | | DRAIN HOLES: | | WITHOUT DRAIN HOLES | |
| | MTG. OPTION: | | WITH PEGS | | MTG. OPTION: | | WITH PEGS | | MTG. OPTION: | | WITH PEGS | | MTG. OPTION: | | WITH PEGS | |
| | HOUSING MAT'L: | | NYLON 6/6 94V-2 NATURAL | | HOUSING MAT'L: | | NYLON 6/6 94V-0 NATURAL | | HOUSING MAT'L: | | NYLON 6/6 94V-2 NATURAL | | HOUSING MAT'L: | | NYLON 6/6 94V-0 NATURAL | |
| | PACKAGING: | | TRAY | | PACKAGING: | | TRAY | | PACKAGING: | | TRAY | | PACKAGING: | | TRAY | |
| I | PART NO. | ENG NO. | CKTS | | PART NO. | ENG NO. | CKTS | | PART NO. | ENG NO. | CKTS | | PART NO. | ENG NO. | CKTS | |
| | 39-30-6025 | 5566 -02A2S | 2 | | 39-30-6026 | 5566 -02A2S-210 | 2 | | 39-30-0026 | 5566 -02A2GS2 | 2 | | 39-30-0027 | 5566 -02A2GS2-210 | 2 | |
| | 39-30-6045 | 5566 -04A2S | 4 | | 39-30-6046 | 5566 -04A2S-210 | 4 | | 39-30-0046 | 5566 -04A2GS2 | 4 | | 39-30-0047 | 5566 -04A2GS2-210 | 4 | |
| | 39-30-6065 | 5566 -06A2S | 6 | | 39-30-6066 | 5566 -06A2S-210 | 6 | | 39-30-0066 | 5566 -06A2GS2 | 6 | | 39-30-0067 | 5566 -06A2GS2-210 | 6 | |
| | 39-30-6085 | 5566 -08A2S | 8 | | 39-30-6086 | 5566 -08A2S-210 | 8 | | 39-30-0086 | 5566 -08A2GS2 | 8 | | 39-30-0087 | 5566 -08A2GS2-210 | 8 | |
| | 39-30-6105 | 5566 -10A2S | 10 | | 39-30-6106 | 5566 -10A2S-210 | 10 | | 39-30-0106 | 5566 -10A2GS2 | 10 | | 39-30-0107 | 5566 -10A2GS2-210 | 10 | |
| | 39-30-6125 | 5566 -12A2S | 12 | | 39-30-6126 | 5566 -12A2S-210 | 12 | | 39-30-0126 | 5566 -12A2GS2 | 12 | | 39-30-0127 | 5566 -12A2GS2-210 | 12 | |
| | 39-30-6145 | 5566 -14A2S | 14 | | 39-30-6146 | 5566 -14A2S-210 | 14 | | 39-30-0146 | 5566 -14A2GS2 | 14 | | 39-30-0147 | 5566 -14A2GS2-210 | 14 | |
| | 39-30-6165 | 5566 -16A2S | 16 | | 39-30-6166 | 5566 -16A2S-210 | 16 | | 39-30-0166 | 5566 -16A2GS2 | 16 | | 39-30-0167 | 5566 -16A2GS2-210 | 16 | |
| | 39-30-6185 | 5566 -18A2S | 18 | | 39-30-6186 | 5566 -18A2S-210 | 18 | | 39-30-0186 | 5566 -18A2GS2 | 18 | | 39-30-0187 | 5566 -18A2GS2-210 | 18 | |
| | 39-30-6205 | 5566 -20A2S | 20 | | 39-30-6206 | 5566 -20A2S-210 | 20 | | 39-30-0206 | 5566 -20A2GS2 | 20 | | 39-30-0207 | 5566 -20A2GS2-210 | 20 | |
| | 39-30-6225 | 5566 -22A2S | 22 | | 39-30-6226 | 5566 -22A2S-210 | 22 | | 39-30-0226 | 5566 -22A2GS2 | 22 | | 39-30-0227 | 5566 -22A2GS2-210 | 22 | |
| | 39-30-6245 | 5566 -24A2S | 24 | | 39-30-6246 | 5566 -24A2S-210 | 24 | | 39-30-0246 | 5566 -24A2GS2 | 24 | | 39-30-0247 | 5566 -24A2GS2-210 | 24 | |
| | | - | | | | - | | | | - | | | | - | | |
| | | - | | | | - | | | | - | | | | - | | |

| | | | | | | | | | | | | | | | | |
|---|----------------|-------------|-------------------------|--|----------------|-----------------|-------------------------|--|----------------|---------------|-------------------------|--|----------------|-------------------|-------------------------|--|
| G | PLATING: | | 100 M.I. TIN | | PLATING: | | 100 M.I. TIN | | PLATING: | | 15 M.I. SELECT GOLD | | PLATING: | | 15 M.I. SELECT GOLD | |
| | DRAIN HOLES: | | WITH DRAIN HOLES | | DRAIN HOLES: | | WITH DRAIN HOLES | | DRAIN HOLES: | | WITH DRAIN HOLES | | DRAIN HOLES: | | WITH DRAIN HOLES | |
| | MTG. OPTION: | | WITH PEGS | | MTG. OPTION: | | WITH PEGS | | MTG. OPTION: | | WITH PEGS | | MTG. OPTION: | | WITH PEGS | |
| | HOUSING MAT'L: | | NYLON 6/6 94V-2 NATURAL | | HOUSING MAT'L: | | NYLON 6/6 94V-0 NATURAL | | HOUSING MAT'L: | | NYLON 6/6 94V-2 NATURAL | | HOUSING MAT'L: | | NYLON 6/6 94V-0 NATURAL | |
| | PACKAGING: | | TRAY | | PACKAGING: | | TRAY | | PACKAGING: | | TRAY | | PACKAGING: | | TRAY | |
| F | PART NO. | ENG NO. | CKTS | | PART NO. | ENG NO. | CKTS | | PART NO. | ENG NO. | CKTS | | PART NO. | ENG NO. | CKTS | |
| | 39-30-6027 | 5566 -02B2S | 2 | | 39-30-6028 | 5566 -02B2S-210 | 2 | | 39-30-0028 | 5566 -02B2GS2 | 2 | | 39-30-0029 | 5566 -02B2GS2-210 | 2 | |
| | 39-30-6047 | 5566 -04B2S | 4 | | 39-30-6048 | 5566 -04B2S-210 | 4 | | 39-30-0048 | 5566 -04B2GS2 | 4 | | 39-30-0049 | 5566 -04B2GS2-210 | 4 | |
| | 39-30-6067 | 5566 -06B2S | 6 | | 39-30-6068 | 5566 -06B2S-210 | 6 | | 39-30-0068 | 5566 -06B2GS2 | 6 | | 39-30-0069 | 5566 -06B2GS2-210 | 6 | |
| | 39-30-6087 | 5566 -08B2S | 8 | | 39-30-6088 | 5566 -08B2S-210 | 8 | | 39-30-0088 | 5566 -08B2GS2 | 8 | | 39-30-0089 | 5566 -08B2GS2-210 | 8 | |
| | 39-30-6107 | 5566 -10B2S | 10 | | 39-30-6108 | 5566 -10B2S-210 | 10 | | 39-30-0108 | 5566 -10B2GS2 | 10 | | 39-30-0109 | 5566 -10B2GS2-210 | 10 | |
| | 39-30-6127 | 5566 -12B2S | 12 | | 39-30-6128 | 5566 -12B2S-210 | 12 | | 39-30-0128 | 5566 -12B2GS2 | 12 | | 39-30-0129 | 5566 -12B2GS2-210 | 12 | |
| | 39-30-6147 | 5566 -14B2S | 14 | | 39-30-6148 | 5566 -14B2S-210 | 14 | | 39-30-0148 | 5566 -14B2GS2 | 14 | | 39-30-0149 | 5566 -14B2GS2-210 | 14 | |
| | 39-30-6167 | 5566 -16B2S | 16 | | 39-30-6168 | 5566 -16B2S-210 | 16 | | 39-30-0168 | 5566 -16B2GS2 | 16 | | 39-30-0169 | 5566 -16B2GS2-210 | 16 | |
| | 39-30-6187 | 5566 -18B2S | 18 | | 39-30-6188 | 5566 -18B2S-210 | 18 | | 39-30-0188 | 5566 -18B2GS2 | 18 | | 39-30-0189 | 5566 -18B2GS2-210 | 18 | |
| | 39-30-6207 | 5566 -20B2S | 20 | | 39-30-6208 | 5566 -20B2S-210 | 20 | | 39-30-0208 | 5566 -20B2GS2 | 20 | | 39-30-0209 | 5566 -20B2GS2-210 | 20 | |
| | 39-30-6227 | 5566 -22B2S | 22 | | 39-30-6228 | 5566 -22B2S-210 | 22 | | 39-30-0228 | 5566 -22B2GS2 | 22 | | 39-30-0229 | 5566 -22B2GS2-210 | 22 | |
| | 39-30-6247 | 5566 -24B2S | 24 | | 39-30-6248 | 5566 -24B2S-210 | 24 | | 39-30-0248 | 5566 -24B2GS2 | 24 | | 39-30-0249 | 5566 -24B2GS2-210 | 24 | |
| | | - | | | | - | | | | - | | | | - | | |
| | | - | | | | - | | | | - | | | | - | | |

| | | | | | | | | | | | | | | | | | |
|---|--|--|--|--|--|--|--|--|--|--|--|--|--|--|--|--|---|
| C | | | | | | | | | | | | | | | | | C |
| B | | | | | | | | | | | | | | | | | B |
| A | | | | | | | | | | | | | | | | | A |

| REV. PACKAGING EC NO: UCP2009-1336 DRWN: KLOSTEMEIER 2008/11/24 CHKD: J.BELL 2008/11/24 APPR: F.S.MITH 2008/11/24 | DESCRIPTION REV | QUALITY SYMBOLS ▽=0 ▽=0 | GENERAL TOLERANCES (UNLESS SPECIFIED) <table border="1" style="font-size: small;"> <tr> <th></th> <th>mm</th> <th>INCH</th> </tr> <tr> <td>4 PLACES</td> <td>± .---</td> <td>± .---</td> </tr> <tr> <td>3 PLACES</td> <td>± .---</td> <td>± .015</td> </tr> <tr> <td>2 PLACES</td> <td>± 0.38</td> <td>± .015</td> </tr> <tr> <td>1 PLACE</td> <td>± 0.38</td> <td>± .---</td> </tr> <tr> <td colspan="3" style="text-align: center;">ANGULAR ± 1/2°</td> </tr> </table> | | mm | INCH | 4 PLACES | ± .--- | ± .--- | 3 PLACES | ± .--- | ± .015 | 2 PLACES | ± 0.38 | ± .015 | 1 PLACE | ± 0.38 | ± .--- | ANGULAR ± 1/2° | | | DIMENSION STYLE IN/MM DRAWN BY DATE LEM 2/17/99 CHECKED BY DATE MAB 2/17/99 APPROVED BY DATE RRE 2/17/99 | SCALE 1:1 | DESIGN UNITS METRIC | THIRD ANGLE PROJECTION | TITLE MINI-FIT JR VERT. HEADER ASSEMBLIES WITH MOUNTING PEGS MOLEX INCORPORATED MATERIAL NO. SEE CHART DOCUMENT NO. SDA-5566-N*2*-* | SHEET NO. 3 |
|--|--------------------|-------------------------------|---|--|----|------|----------|--------|--------|----------|--------|--------|----------|--------|--------|---------|--------|--------|----------------|--|--|--|---------------------|-------------------------------|----------------------------|---|-----------------------|
| | mm | INCH | | | | | | | | | | | | | | | | | | | | | | | | | |
| 4 PLACES | ± .--- | ± .--- | | | | | | | | | | | | | | | | | | | | | | | | | |
| 3 PLACES | ± .--- | ± .015 | | | | | | | | | | | | | | | | | | | | | | | | | |
| 2 PLACES | ± 0.38 | ± .015 | | | | | | | | | | | | | | | | | | | | | | | | | |
| 1 PLACE | ± 0.38 | ± .--- | | | | | | | | | | | | | | | | | | | | | | | | | |
| ANGULAR ± 1/2° | | | | | | | | | | | | | | | | | | | | | | | | | | | |

DRAFT WHERE APPLICABLE MUST REMAIN WITHIN DIMENSIONS

THIS DRAWING CONTAINS INFORMATION THAT IS PROPRIETARY TO MOLEX INCORPORATED AND SHOULD NOT BE USED WITHOUT WRITTEN PERMISSION