

**PLEASE CHECK WWW.MOLEX.COM FOR LATEST PART INFORMATION**

**Part Number:** [5023510200](#)  
**Status:** **Active**  
**Overview:** [duraclik](#)  
**Description:** 2.00mm (.079") Pitch DuraClik™ Wire-to-Board Receptacle Housing, Single Row, 2 Circuits

**Documents:**

[3D Model](#) [Product Specification PS-502351-001 \(PDF\)](#)  
[Drawing \(PDF\)](#) [RoHS Certificate of Compliance \(PDF\)](#)

**General**

Product Family Crimp Housings  
 Series [502351](#)  
 Overview [duraclik](#)  
 Product Name DuraClik™

**Physical**

Circuits (maximum) 2  
 Color - Resin White  
 Gender Receptacle  
 Glow-Wire Compliant No  
 Keying to Mating Part Yes  
 Lock to Mating Part Yes  
 Number of Rows 1  
 Packaging Type Bag  
 Panel Mount No  
 Pitch - Mating Interface (in) 0.079 In  
 Pitch - Mating Interface (mm) 2.00 mm  
 Polarized to Mating Part Yes  
 Temperature Range - Operating -40°C to +105°C

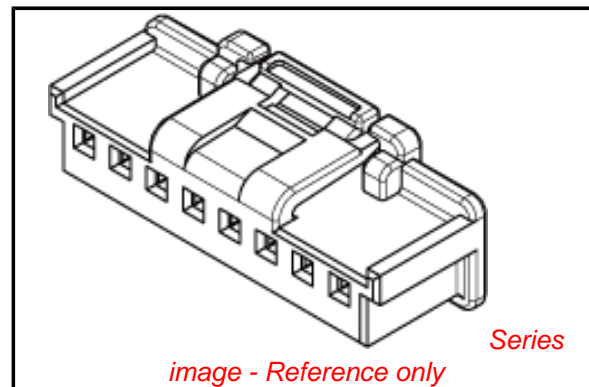
**Electrical**

Current - Maximum per Contact 3A

**Material Info**

**Reference - Drawing Numbers**

Packaging Specification [PK-502351-001](#)  
 Product Specification [PS-502351-001](#), [RPS-502351-001](#), [RPS-502351-002](#)  
 Sales Drawing [SD-502351-001](#)



**EU RoHS**

**ELV and RoHS Compliant**  
**REACH SVHC Contains SVHC: No**  
**Halogen-Free Status**

**China RoHS**



**Need more information on product environmental compliance?**

Email [productcompliance@molex.com](mailto:productcompliance@molex.com)  
 For a multiple part number RoHS Certificate of Compliance, [click here](#)

Please visit the [Contact Us](#) section for any non-product compliance questions.

**Search Parts in this Series**

[502351Series](#)

**Mates With**

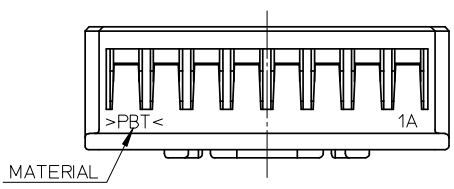
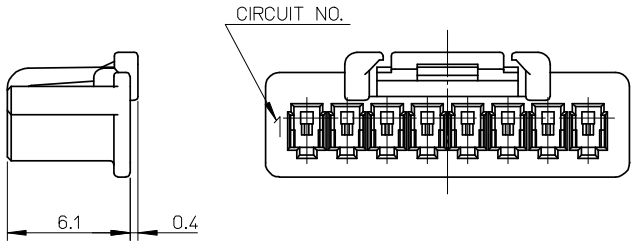
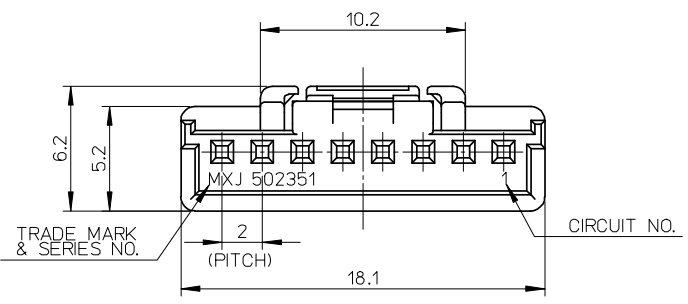
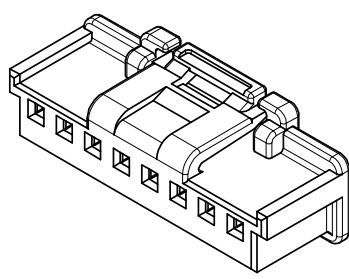
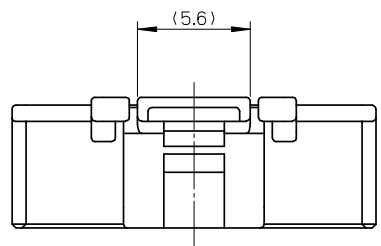
[502352](#) PCB Header

**Use With**

[50212](#) Crimp Terminal . [50372](#) Crimp Terminal

NOTES

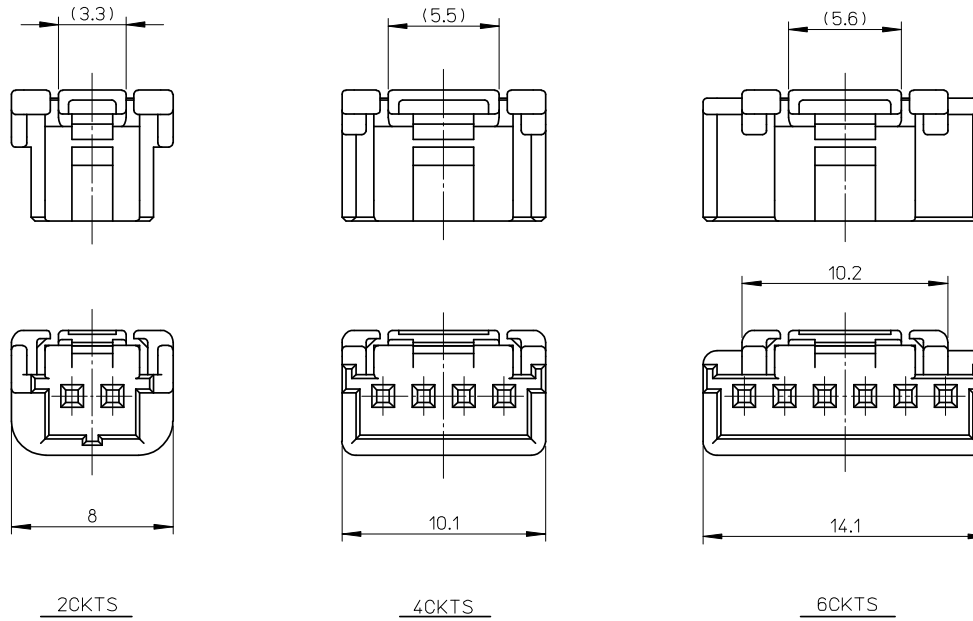
- 1. 材質: PBT  
MATERIAL: PBT
- 2. 色: 白  
COLOR: WHITE
- 3. 適合端子: 50212, 50372シリーズ  
APPLICABLE TERMINAL: 50212, 50372 SERIES
- 4. 嵌合相手: 502352シリーズ  
MATES WITH: 502352 SERIES
- 5. ELV及びRoHS適合品  
ELV AND RoHS COMPLIANT



8CKTS

502351-0800	8
502351-0600	6
502351-0400	4
502351-0200	2
MATERIAL NO.	CKTS

RELEASED EC NO: JTR2008-0007 DRWN: SHIBATA 2008/01/23 CHKD: HKOMATSU 2008/01/23 APPR: AKANESHIGE 2008/01/23	GENERAL TOLERANCES (UNLESS SPECIFIED)		DIMENSION STYLE MM ONLY	SCALE 4:1	DESIGN UNITS METRIC	THIRD ANGLE PROJECTION
	10 UNDER	±0.20	DRAWN BY SHSHIBATA	DATE 2007/12/18	TITLE 2.0MM PITCH WIRE TO BOARD CONN. RECEPTACLE HOUSING MOLEX INCORPORATED DOCUMENT NO. SD-502351-001 SHEET NO. 1 OF 2	
	10 OVER 30 UNDER	±0.25	CHECKED BY HKOMATSU	DATE 2007/12/18		
	30 OVER	±0.30	APPROVED BY AKANESHIGE	DATE 2007/12/18		
ANGULAR ±3 °		MATERIAL NO.	SEE CHART			
DRAFT WHERE APPLICABLE MUST REMAIN WITHIN DIMENSIONS		SIZE A3		THIS DRAWING CONTAINS INFORMATION THAT IS PROPRIETARY TO MOLEX INCORPORATED AND SHOULD NOT BE USED WITHOUT WRITTEN PERMISSION		



RELEASED EC NO: JTR2008-0007 DRWN: SHSHIBATA 2008/01/23 CHK'D: HKOMATSU 2008/01/23 APPR: AKANESHIGE 2008/01/23	GENERAL TOLERANCES (UNLESS SPECIFIED)		DIMENSION STYLE MM ONLY		SCALE 4:1	DESIGN UNITS METRIC	THIRD ANGLE PROJECTION	
	10 UNDER	± 0.20	DRAWN BY SHSHIBATA	DATE 2007/12/18	TITLE 2.0MM PITCH WIRE TO BOARD CONN. RECEPTACLE HOUSING			
	10 OVER 30 UNDER	± 0.25	CHECKED BY HKOMATSU	DATE 2007/12/18				
	30 OVER	± 0.30	APPROVED BY AKANESHIGE	DATE 2007/12/18	MOLEX INCORPORATED			
ANGULAR ±3 °		MATERIAL NO.		DOCUMENT NO.				
DRAFT WHERE APPLICABLE MUST REMAIN WITHIN DIMENSIONS		SEE CHART		SD-502351-001		2 OF 2		
O		A3		THIS DRAWING CONTAINS INFORMATION THAT IS PROPRIETARY TO MOLEX INCORPORATED AND SHOULD NOT BE USED WITHOUT WRITTEN PERMISSION				