

**PLEASE CHECK WWW.MOLEX.COM FOR LATEST PART INFORMATION**

**Part Number:** [0190330001](#)  
**Status:** **Active**  
**Description:** Krimptite™ Snap Plug, for 18-22 AWG Wire

**Documents:**

[Drawing \(PDF\)](#) [RoHS Certificate of Compliance \(PDF\)](#)  
[Packaging Specification \(PDF\)](#)

**Agency Certification**

CSA LR18689  
 UL E152602

**General**

Product Family Quick Disconnects  
 Series [19033](#)  
 Crimp Quality Equipment Yes  
 Product Name Krimptite™  
 Type Snap Plug

**Physical**

Barrel Type Closed  
 Gender Male  
 Glow-Wire Compliant No  
 Insulation None  
 Lock to Mating Part None  
 Material - Metal Copper  
 Material - Plating Mating Tin  
 Material - Plating Termination Tin  
 Orientation Straight  
 Packaging Type Bag  
 Tab Thickness N/A  
 Tab Width N/A  
 Termination Interface: Style Crimp or Compression  
 Wire Insulation Diameter N/A  
 Wire Size AWG 18, 20, 22  
 Wire Size mm<sup>2</sup> 0.35 - 0.80

**Electrical**

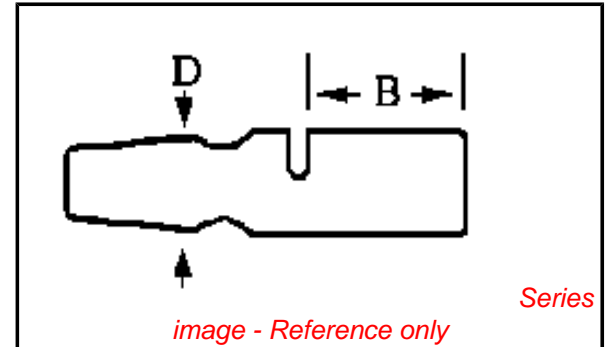
Voltage - Maximum N/A

**Material Info**

Old Part Number A-159

**Reference - Drawing Numbers**

Sales Drawing SD-19033-001



**EU RoHS**

**ELV and RoHS Compliant**  
**REACH SVHC Contains SVHC: No**  
**Halogen-Free Status**

**China RoHS**



**Need more information on product environmental compliance?**

Email [productcompliance@molex.com](mailto:productcompliance@molex.com)  
 For a multiple part number RoHS Certificate of Compliance, [click here](#)

Please visit the [Contact Us](#) section for any non-product compliance questions.

**Search Parts in this Series**

[19033Series](#)

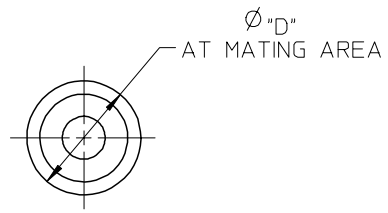
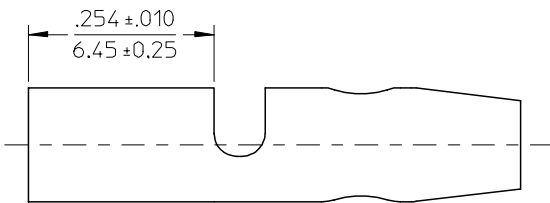
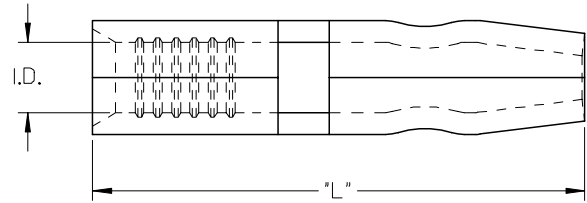
**Application Tooling | FAQ**

*Tooling specifications and manuals are found by selecting the products below. Crimp Height Specifications are then contained in the Application Tooling Specification document.*

**Global**

Description	Product #
Hand Crimp Tool	<a href="#">0640030100</a>
Crimp Head for the AT-200™ Pneumatic Hand Tool	<a href="#">0640070100</a>

MATERIAL NUMBER	ENG. NUMBER	WIRE RANGE AWG	"I.D." MIN	"D" ±.002/0.05	"L" ±.010/0.25
190330001	A-159	22-18	ⓔ .056/1.42	.182/4.62	.754/19.15
190330003	A-169	22-18	ⓔ .056/1.42	.158/4.01	.700/17.78
190330005	B-179	16-14	.084/2.13	.182/4.62	.754/19.15
190330007	B-189	16-14	.084/2.13	.158/4.01	.700/17.78



ⓔ

SALES DRAWING

NOTE(S):  
 1. MATERIAL: COPPER .032/0.81 THK  
 2. FINISH: ELECTRO-TIN

REMOVE TAPE SPECS. EC NO: ETC2005-0080 DRW:DMYRICK 2004/11/04 CHKD:RDEROSS 2004/11/04 APPR:RDEROSS 2004/11/04	QUALITY SYMBOLS ▽=0 ▽=0	GENERAL TOLERANCES (UNLESS SPECIFIED)		DIMENSION STYLE IN/MM	SCALE	DESIGN UNITS INCH	THIRD ANGLE PROJECTION
		4 PLACES ± --- ± ---	DRAWN BY RMARSHAL	DATE 92/09/29	TITLE KRIMPTITE MALE BULLET SNAP PLUG .180 AND .156		
		3 PLACES ± --- ± ---	CHECKED BY RDEROSS	DATE 92/09/29	MOLEX INCORPORATED		
		2 PLACES ± --- ± ---	APPROVED BY RDEROSS	DATE 92/09/29	MATERIAL NO. SEE CHART	DOCUMENT NO. SD-19033-001	SHEET NO. 1 OF 1
1 PLACE ± --- ± ---	ANGULAR ± ---°	DRAFT WHERE APPLICABLE MUST REMAIN WITHIN DIMENSIONS			THIS DRAWING CONTAINS INFORMATION THAT IS PROPRIETARY TO MOLEX INCORPORATED AND SHOULD NOT BE USED WITHOUT WRITTEN PERMISSION		