

PLEASE CHECK WWW.MOLEX.COM FOR LATEST PART INFORMATION

Part Number: [0671300801](#)
Status: **Active**
Description: 1.27mm (.050") PC Card Header, One Slot, Flush Profile, Top Mount, Right Angle, SMT, without Mylar, Embossed Tape on Reel Packaging, Lead-free

Documents:

[3D Model](#) [RoHS Certificate of Compliance \(PDF\)](#)
[Drawing \(PDF\)](#)

General

Product Family	Memory Card Sockets
Series	67130
Button Type	N/A
Comments	Without Mylar
Component Type	Header/Socket (Host)
Product Name	CardBus
Type	I, II

Physical

Card Detection Switch	N/A
Circuits (Loaded)	68
Durability (mating cycles max)	10,000
Ejector Button Side	No Ejector Button Present
Entry Angle	90° Angle (Side Entry)
Keying to Mating Part	Yes
PCB Locator	Yes
PCB Mounting Side	Normal
PCB Retention	Yes
Packaging Type	Embossed Tape on Reel
Pitch - Mating Interface (in)	0.050 In
Pitch - Mating Interface (mm)	1.27 mm
Ports	1
Temperature Range - Operating	-20°C to +85°C

Electrical

Current - Maximum per Contact	0.5A
Voltage - Maximum	100V AC
Voltage Key	3.3V

Material Info

Reference - Drawing Numbers

Sales Drawing	SD-67130-004
---------------	--------------

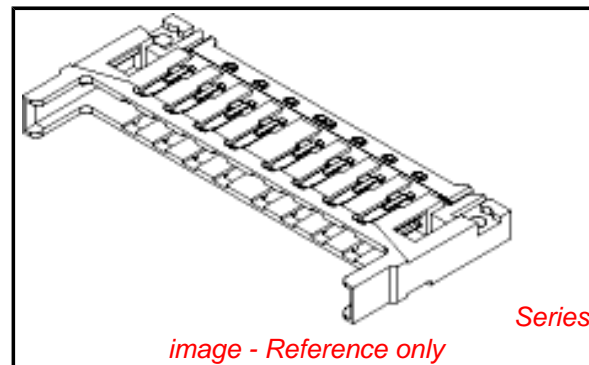


image - Reference only

EU RoHS

**ELV and RoHS
Compliant**
**REACH SVHC
Contains SVHC: No**
**Halogen-Free
Status
Not Reviewed**

China RoHS



**Need more information on product
environmental compliance?**

Email productcompliance@molex.com
 For a multiple part number RoHS Certificate of Compliance, [click here](#)

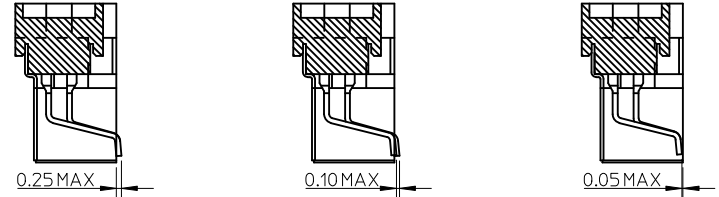
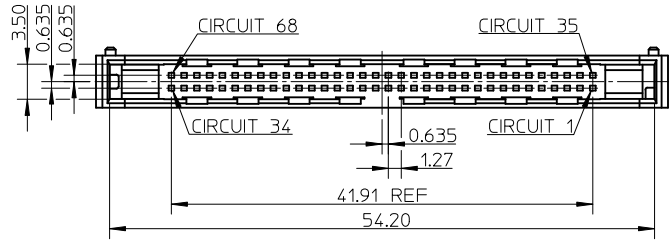
Please visit the [Contact Us](#) section for any non-product compliance questions.

Search Parts in this Series

[67130Series](#)

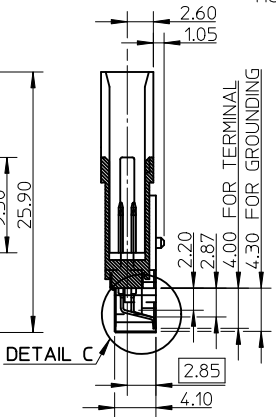
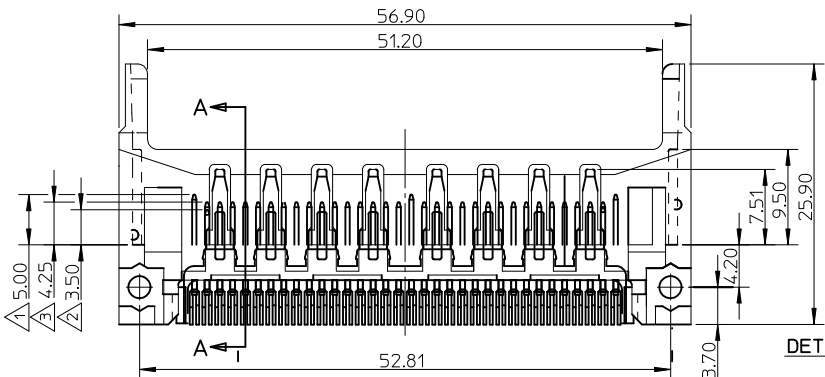
Use With

[67121 Ejector Mechanism](#)

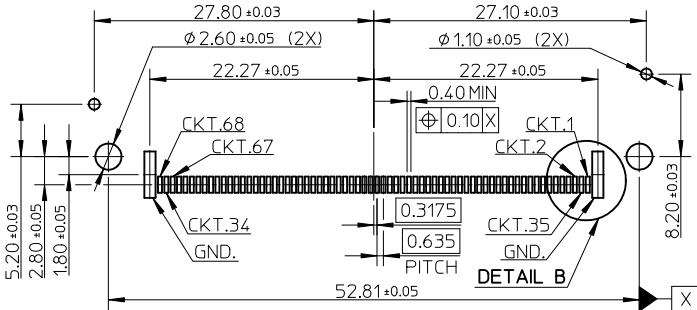


SOLDER TAIL TIP (BETWEEN THE LOWEST TIP AND HSG)
 SOLDER TAIL TIP (BETWEEN TIP AND TIP)
 SOLDER TAIL TIP (BETWEEN THE HIGHEST TIP AND HSG)

DETAIL C

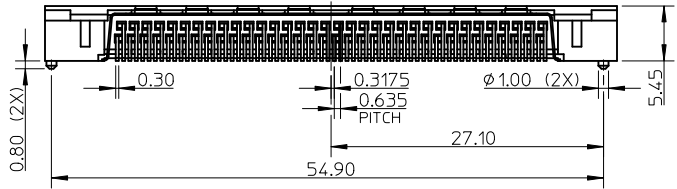


SECTION A-A

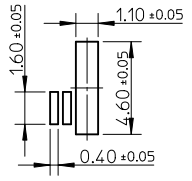


RECOMMENDED PCB LAYOUT

- NOTES:
- 1. APPLIES TO CIRCUIT NUMBER: 1,17,34,35,51,68.
 - 2. APPLIES TO CIRCUIT NUMBER: 36,67.
 - 3. APPLIES TO CIRCUIT NUMBER: THE OTHERS.
 - 4. COPLANARITY BETWEEN SOLDER TAILS IS 0.10mm MAX.
 - 5. TRUE POSITION BETWEEN SOLDER TAILS IS 0.15 mm MAX.
 - 6. PRODUCT SPEC: PS-67160-011.
 - 7. FINISH:
 - SELECTIVE GOLD (Au) IN CONTACT AREA, THICKNESS=0.38 MICROMETER MINIMUM;
 - SELECTIVE PURE TIN IN SOLDER TAIL AREA, THICKNESS=2.50 MICROMETER MINIMUM;
 - NICKEL (Ni) OVERALL.
 - 8. THE PACKAGE OF 67130-0801 PER PK-67130-002, 67130-0806 PER PK-67130-003, 67130-0808 PER PK-67130-001.
 - 9. DATE CODE:YYWW(YEAR/WEEK) FOR 67130-0806
 - 10. PRODUCT COMPLIANT TO RoHS DIRECTIVE 2002/95/EC AND ELV 2000/53/EC.



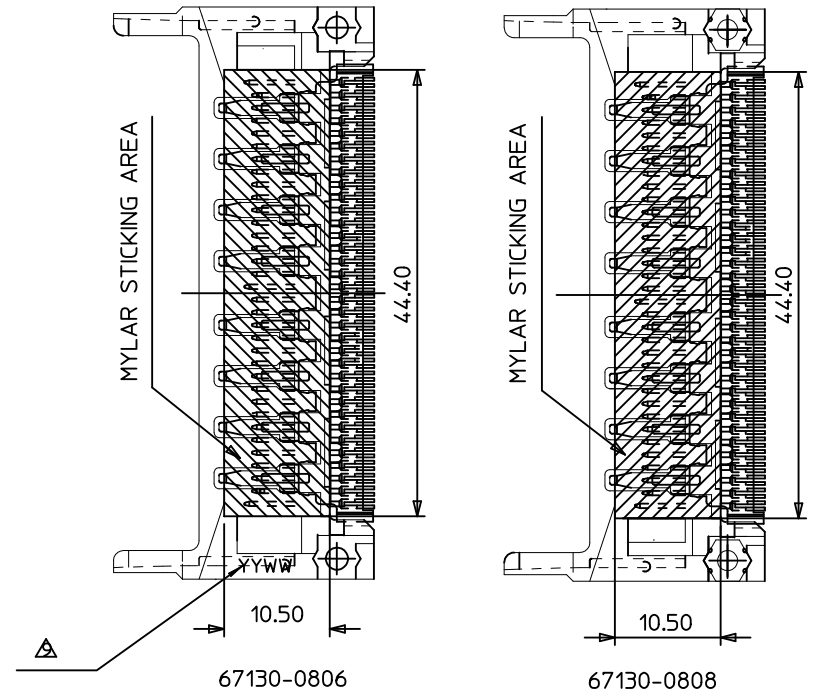
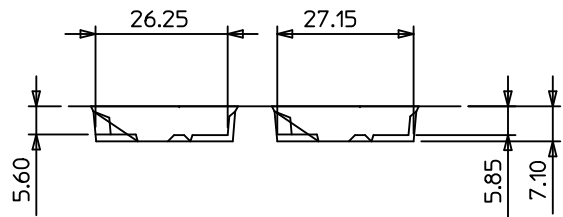
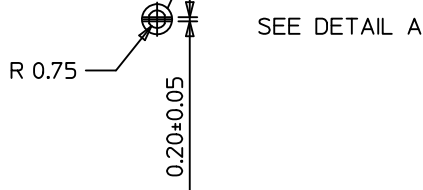
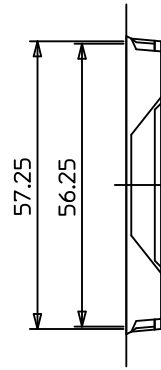
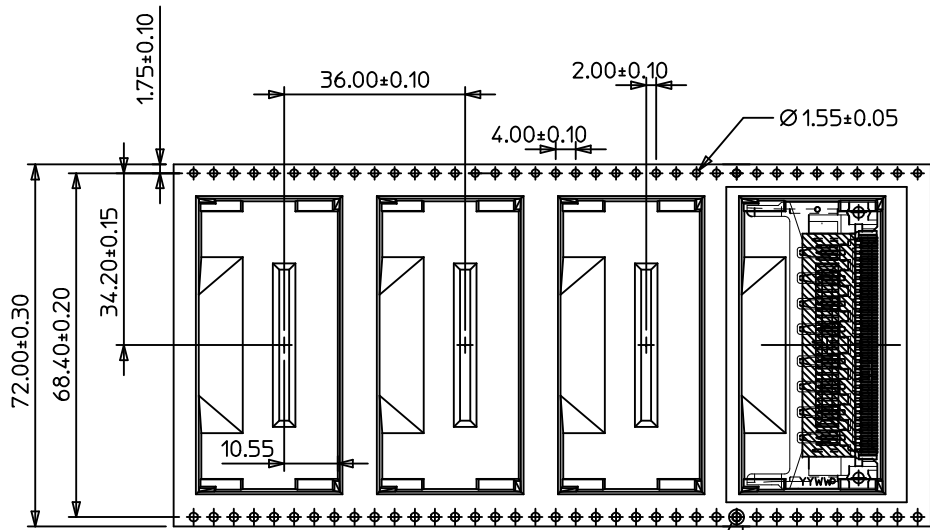
67130-0801



DETAIL B

67130-0808	WITH MYLAR, M2 HEX NUTS
67130-0806	WITH MYLAR
67130-0801	W/O MYLAR
MATERIAL NO.	DESCRIPTION

ADD DIMENSIONS EC NO: SH2010-0390 DRWN:XQZHANG 2010/04/13 CHKD:GILLI 2010/04/13 APPR:XJ SONG 2010/05/18	QUALITY SYMBOLS $F_{A'}=0$ $F_{C'}=0$ $F_{P'}=0$	GENERAL TOLERANCES (UNLESS SPECIFIED)		DIMENSION STYLE MM ONLY	SCALE 1:1	DESIGN UNITS METRIC	THIRD ANGLE PROJECTION	
		mm	INCH	DRAWN BY	DATE	TITLE	CARD BUS HEADER ASS'Y FOR 3.3V SMT STANDARD TYPE LEAD-FREE MOLEX INCORPORATED SD-67130-004	
		4 PLACES ± ---	± ---	JACK	2004/11/11			
		3 PLACES ± ---	± ---	CHECKED BY	DATE			
		2 PLACES ± 0.25	± ---	HWWANG	2004/11/11			
		1 PLACE ± 0.25	± ---	APPROVED BY	DATE			
		ANGULAR ± 3 °		XJ SONG	2010/04/14			
		DRAFT WHERE APPLICABLE MUST REMAIN WITHIN DIMENSIONS		MATERIAL NO.	SEE TABLE	DOCUMENT NO.	SHEET NO.	
				SIZE	A3	THIS DRAWING CONTAINS INFORMATION THAT IS PROPRIETARY TO MOLEX INCORPORATED AND SHOULD NOT BE USED WITHOUT WRITTEN PERMISSION		



DETAIL A

SEE SHEET 1 EC NO: SH2010-0390 DRWN: XZHZHANG CHKD: GLLI APPR: XJSONG	2010/04/13 2010/04/13 2010/05/18	DESCRIPTION REV	QUALITY SYMBOLS $\nabla_A = 0$ $\nabla_C = 0$ $\nabla_F = 0$	GENERAL TOLERANCES (UNLESS SPECIFIED) mm INCH 4 PLACES ± --- ± --- 3 PLACES ± --- ± --- 2 PLACES ± 0.25 ± --- 1 PLACE ± 0.25 ± --- ANGULAR ± 3°	DIMENSION STYLE MM ONLY DRAWN BY: JACK CHECKED BY: HWWANG APPROVED BY: XJSONG MATERIAL NO.	DATE: 2004/11/11 DATE: 2004/11/11 DATE: 2010/04/14	SCALE: 1:1 DESIGN UNITS: METRIC THIRD ANGLE PROJECTION	TITLE: CARD BUS HEADER ASS'Y FOR 3.3V SMT STANDARD TYPE LEAD-FREE MOLEX INCORPORATED	DOCUMENT NO.: SD-67130-004 SHEET NO.: 2 OF 2
	DRAFT WHERE APPLICABLE MUST REMAIN WITHIN DIMENSIONS				SIZE: A3	THIS DRAWING CONTAINS INFORMATION THAT IS PROPRIETARY TO MOLEX INCORPORATED AND SHOULD NOT BE USED WITHOUT WRITTEN PERMISSION			