

PLEASE CHECK WWW.MOLEX.COM FOR LATEST PART INFORMATION

Part Number: [0194270023](#)
Status: **Active**
Overview: [mx150l sealed connector system](#)
Description: MX150L™ Gasket for 16 Circuit Plug Housing with Flange

Documents:

[Drawing \(PDF\)](#) [RoHS Certificate of Compliance \(PDF\)](#)

General

Product Family	Accessories
Series	19427
Component Type	Gasket
Overview	mx150l sealed connector system
Product Literature Order No	987650-2181
Product Name	MX150L™

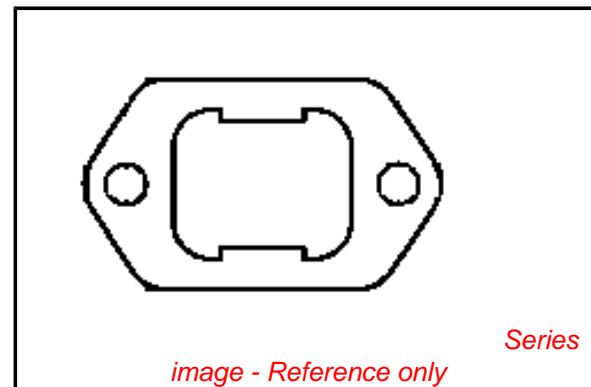
Physical

Circuits (Loaded)	16
Gender	N/A
Packaging Type	Bag

Material Info

Reference - Drawing Numbers

Sales Drawing	SD-19427-026
---------------	--------------



EU RoHS

**ELV and RoHS
Compliant**
REACH SVHC
 Not Reviewed
**Halogen-Free
Status**
Not Reviewed

China RoHS



**Need more information on product
environmental compliance?**

Email productcompliance@molex.com
 For a multiple part number RoHS Certificate of
 Compliance, [click here](#)

Please visit the [Contact Us](#) section for any
 non-product compliance questions.

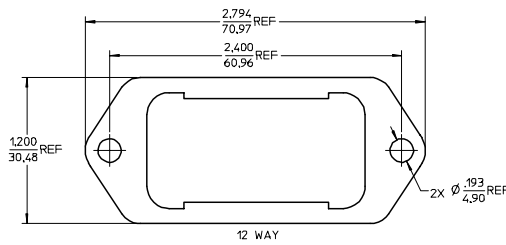
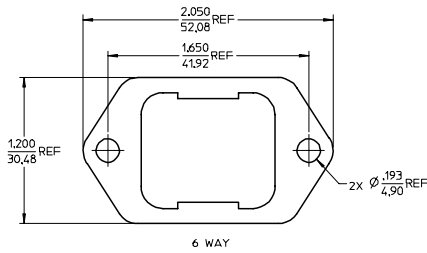
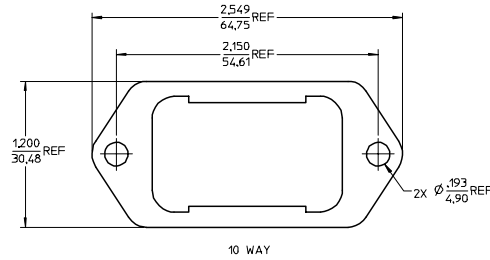
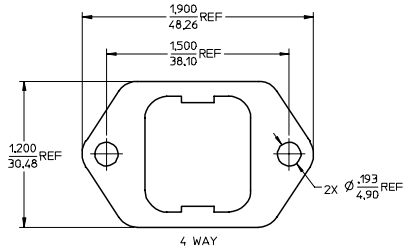
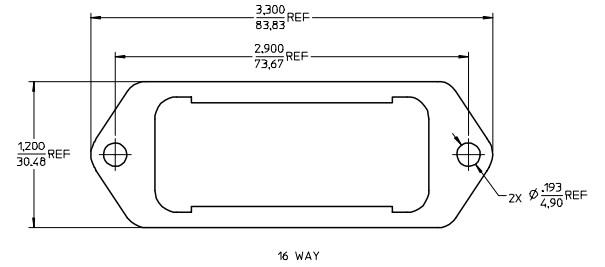
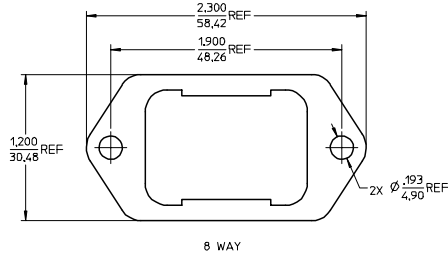
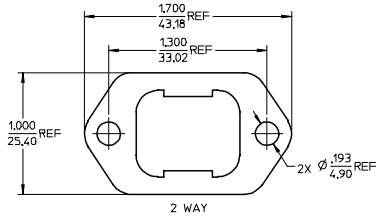
Search Parts in this Series

[19427Series](#)

Use With

[19429-0005](#) MX150L™ Panel Mount Plug

MATERIAL NO.	CIRCUIT NO.
194270025	2 WAY
194270024	4 WAY
194270021	6 WAY
194270022	8 WAY
194270029	10 WAY
194270030	12 WAY
194270023	16 WAY



NOTES:
 1. MATERIAL: .062 THICK EPDM RUBBER, 60 DUROMETER.
 COLOR: BLACK.
 2. GASKET BULK PACKAGED.

QUALITY SYMBOLS	GENERAL TOLERANCES (UNLESS SPECIFIED)		SCALE	DESIGN UNITS	THIRD ANGLE PROJECTION	REVISE ON CAD ONLY
	mm	INCH	2:1	INCH		
▽-0	±---	±---	DIMENSION STYLE		GASKET, PLUG HOUSING W/FLANGE FOR PANEL MOUNT & HEADER MOLEX INCORPORATED MATERIAL NO. SEE CHART DOCUMENT NO. SD-19427-026 SHEET NO. 1 OF 1 THIS DRAWING CONTAINS INFORMATION THAT IS PROPRIETARY TO MOLEX INCORPORATED AND SHOULD NOT BE USED WITHOUT WRITTEN PERMISSION	
▽-0	±---	±---	IN/MM			
	±---	±---	DRAWN BY	DATE		
	±---	±---	DMYRICK	04/07/28		
	±---	±---	CHECKED BY	DATE		
	±---	±---	JPAWLICK	04/07/28		
	ANGULAR ±---		APPROVED BY	DATE		
	DRAFT WHERE APPLICABLE MUST REMAIN WITHIN DIMENSIONS		RDEROSS	04/07/28		