

**PLEASE CHECK WWW.MOLEX.COM FOR LATEST PART INFORMATION**

**Part Number:** [0879143205](#)  
**Status:** **Active**  
**Overview:** [cgrid\\_sl\\_products](#)  
**Description:** 2.54mm (.100") Pitch C-Grid® Header, Through Hole, Dual Row, Vertical, 32 Circuits, 0.76µm (30µ") Gold (Au) Plating, Tray Packaging, Lead-free

**Documents:**

[Drawing \(PDF\)](#) [RoHS Certificate of Compliance \(PDF\)](#)  
[Product Specification PS-87920-019 \(PDF\)](#)

**Agency Certification**

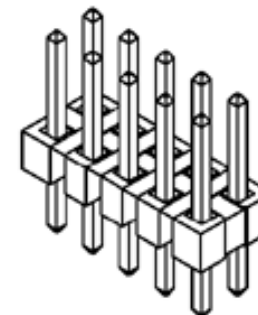
UL E29179

**General**

Product Family PCB Headers  
 Series [87914](#)  
 Application Board-to-Board, Wire-to-Board  
 Overview [cgrid\\_sl\\_products](#)  
 Product Name C-Grid®

**Physical**

Breakaway Yes  
 Circuits (Loaded) 32  
 Circuits (maximum) 32  
 Color - Resin Black  
 First Mate / Last Break No  
 Flammability 94V-0  
 Glow-Wire Compliant No  
 Guide to Mating Part No  
 Keying to Mating Part None  
 Lock to Mating Part None  
 Mated Height (in) 0.240 In  
 Mated Height (mm) 6.10 mm  
 Material - Metal Copper Alloy  
 Material - Plating Mating Gold  
 Material - Plating Termination Tin  
 Material - Resin High Temperature Thermoplastic  
 Number of Rows 2  
 Orientation Vertical  
 PC Tail Length (in) 0.107 In  
 PC Tail Length (mm) 2.72 mm  
 PCB Locator No  
 PCB Retention None  
 PCB Thickness Recommended (in) 0.062 In  
 PCB Thickness Recommended (mm) 1.60 mm  
 Packaging Type Tray  
 Pitch - Mating Interface (in) 0.100 In  
 Pitch - Mating Interface (mm) 2.54 mm  
 Pitch - Term. Interface (in) 0.100 In  
 Pitch - Term. Interface (mm) 2.54 mm  
 Polarized to Mating Part No  
 Polarized to PCB No  
 Shrouded No  
 Stackable No  
 Surface Mount Compatible (SMC) Yes  
 Temperature Range - Operating -55°C to +105°C



*image - Reference only*

*Series*

**EU RoHS**

**ELV and RoHS Compliant**  
**REACH SVHC Not Reviewed**  
**Halogen-Free Status Not Reviewed**

**China RoHS**



**Need more information on product environmental compliance?**

Email [productcompliance@molex.com](mailto:productcompliance@molex.com)  
 For a multiple part number RoHS Certificate of Compliance, [click here](#)

Please visit the [Contact Us](#) section for any non-product compliance questions.

**Search Parts in this Series**

[87914Series](#)

**Mates With**

7859 Shunts, C-Grid® PCB Receptacles like 71850, SL™ IDT Housing like 70450

Termination Interface: Style

Through Hole

**Electrical**

Current - Maximum per Contact

3A

Voltage - Maximum

250V

**Material Info**

**Reference - Drawing Numbers**

Packaging Specification

PK-89990-489

Product Specification

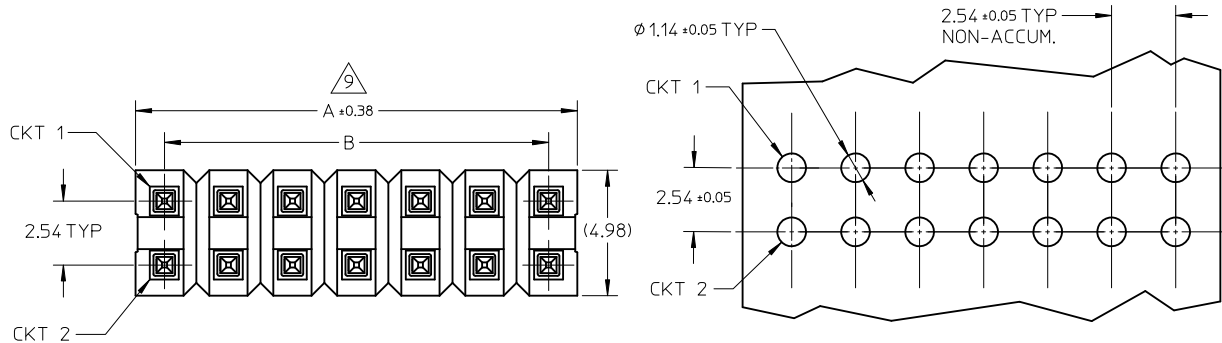
PS-87920-019

Sales Drawing

SD-87914-013, SD-87914-059

This document was generated on 05/26/2010

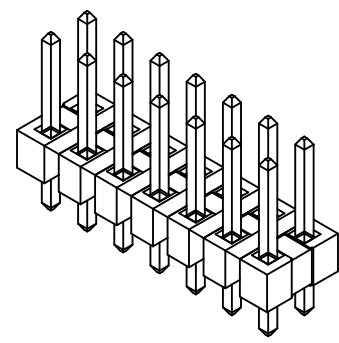
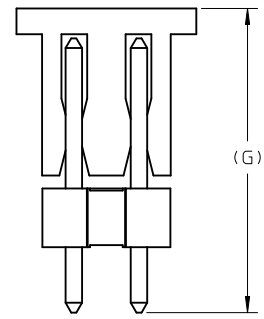
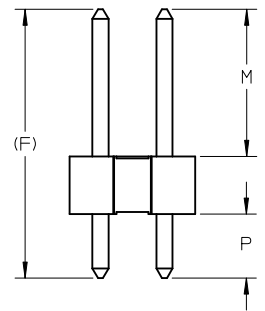
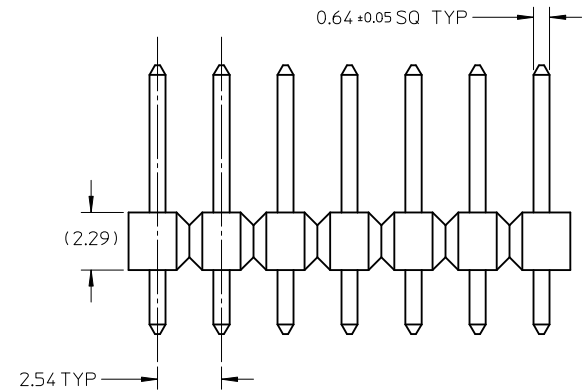
**PLEASE CHECK [WWW.MOLEX.COM](http://WWW.MOLEX.COM) FOR LATEST PART INFORMATION**



RECOMMENDED P.C.B HOLE LAYOUT

NOTES:

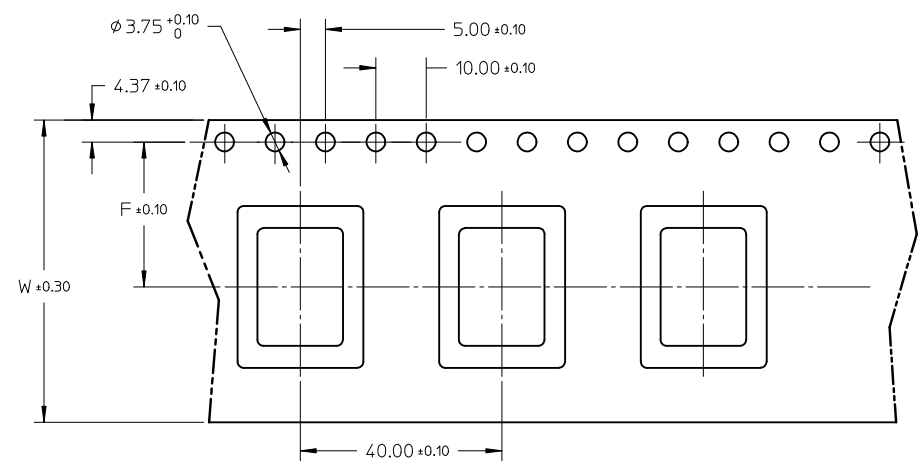
1. MATERIAL:
  - HSG: LCP, GLASS-FILLED, UL94V-0, COLOR: BLACK
  - PIN: 0.64MM SQ PIN, COPPER ALLOY
2. PLATING TYPE:
  - (1) : GOLD FLASH OVER  
1.25 MICRO METER MIN. NICKEL OVERALL.
  - (2) : 0.025 μm MIN. GOLD PLATE ON CONTACT AND  
1.88 μm MIN. TIN ON SOLDERTAIL OVER  
1.25 μm MIN. NICKEL OVERALL.
  - (3) : 0.25 μm MIN. GOLD PLATE ON CONTACT AND  
1.88 μm MIN. TIN ON SOLDERTAIL OVER  
1.25 μm MIN. NICKEL OVERALL.
  - (4) : 0.38 μm MIN. GOLD PLATE ON CONTACT AND  
1.88 μm MIN. TIN ON SOLDERTAIL OVER  
1.25 μm MIN. NICKEL OVERALL.
  - (5) : 0.75 μm MIN. GOLD PLATE ON CONTACT AND  
1.88 μm MIN. TIN ON SOLDERTAIL OVER  
1.25 μm MIN. NICKEL OVERALL
  - (6) : 2.50 μm MIN. TIN IN SELECTED AREA OVER  
1.25 μm MIN. NICKEL OVERALL.
  - (7) : 0.38 μm MIN. GOLD PLATE ON CONTACT AND  
2.50 μm MIN. TIN ON SOLDERTAIL OVER  
1.25 μm MIN. NICKEL OVERALL.
  - (8) : 0.38 μm MIN. GOLD PLATE ON CONTACT AND  
0.05 μm MIN. GOLD FLASH ON SOLDERTAIL OVER  
1.25 μm MIN. NICKEL OVERALL.
3. PIN PUSHOUT FORCE: 1KG MIN IN EITHER DIRECTION
4. THE ABOVE 14 CKT IS FOR ILLUSTRATION PURPOSE ONLY.
5. FOR PACKAGING OPTION PLEASE REFER TO THE TABLE.
6. RECOMMENDED PCB THICKNESS 1.60MM.
7. PRODUCT SPECIFICATION: PS-87920-019
8. WAFER TO BE FLAT WITHIN 0.003mm/mm
9. IRREGULAR CIRCUIT CUTOFF WITHIN BREAKAWAY SECTION IS PERMISSIBLE. CUTTING OR CHIPPING OF THE MAIN BODY IS NOT ACCEPTABLE.
10. PARTS ARE NOT STACKABLE ON 2.54 CENTER
11. CAP TO BE PLACED AS CENTRAL OF PART AS POSSIBLE WITH THE TOP SURFACE FLAT FOR PICK AND PLACE.
12. PACKAGING SPECIFICATION:
  - TRAY: PK-89990-489
  - BULK: PK-89990-491



PG8. +879140108 EC NO: S2010-0695 DRW:ATSEE 2010/02/11 CHKD:PTLIM 2004/12/08 APPR:MLONG 2010/06/05 REV D7	QUALITY SYMBOLS $\nabla_A = 0$ $\nabla_C = 0$ $\nabla_P = 0$	GENERAL TOLERANCES (UNLESS SPECIFIED)		DIMENSION STYLE MM ONLY		SCALE NTS	DESIGN UNITS METRIC	THIRD ANGLE PROJECTION		
			mm	INCH	DRAWN BY	DATE	TITLE			
		4 PLACES	± ---	± ---	KCHO	2004/11/05	2.54MM PITCH DUAL ROW HEADER SINGLE WAFER, T/H MOLEX INCORPORATED			
		3 PLACES	± ---	± ---	CHECKED BY	DATE				
	± 0.20	± ---	PTLIM	2004/12/08						
	± ---	± ---	APPROVED BY	DATE						
	ANGULAR ± 3 °		SCLOW	2004/12/10						
DRAFT WHERE APPLICABLE MUST REMAIN WITHIN DIMENSIONS			MATERIAL NO.	SEE TABLE		DOCUMENT NO.		SD-87914-013		
			SIZE	THIS DRAWING CONTAINS INFORMATION THAT IS PROPRIETARY TO MOLEX INCORPORATED AND SHOULD NOT BE USED WITHOUT WRITTEN PERMISSION				SHEET NO. 1 OF 46		

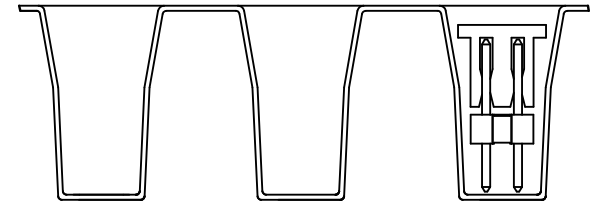
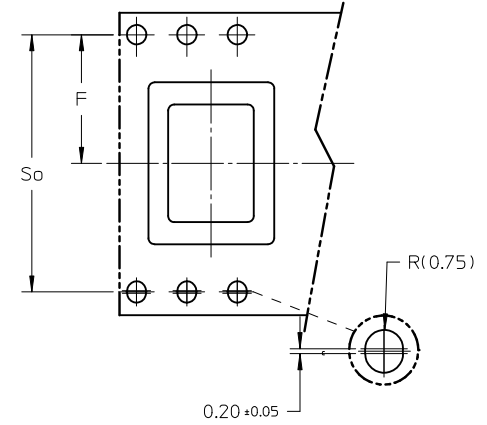
P/N	CKT SIZE	F	So	W	QTY/ REEL
87914-0627	06	11.50	-	24.00	250
87914-0827	08	11.50	-	24.00	250

FOR TAPE WIDTH WITH SINGLE ROW SPROCKET HOLES.



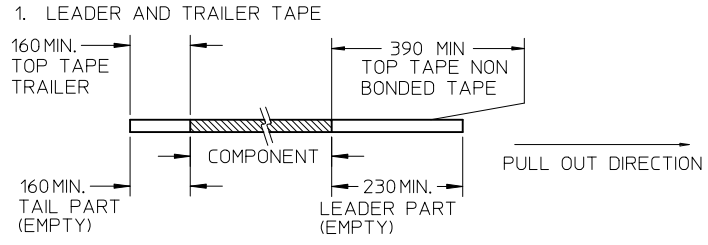
CUSTOMER  
PULL OUT DIRECTION

FOR TAPE WIDTH WITH 2 ROWS OF SPROCKET HOLES.

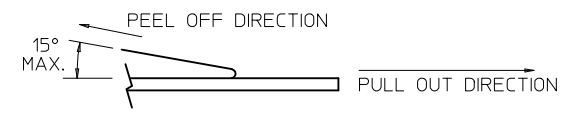


VIEW OF PART ORIENTATION  
IN TAPE & REEL

NOTES:



2. PEELING OFF FORCE OF THE TOP TAPE: 20 - 80gf.  
(PEELING DIRECTION AS SHOWN IN FOLLOWING FIGURE)



3. TAPE AND REEL SPECIFICATION IS AS PER EIA-481.  
4. THE TAPE IS TREATED FOR ANTI-STATIC.

REV	DESCRIPTION	QUALITY SYMBOLS	GENERAL TOLERANCES (UNLESS SPECIFIED)		DIMENSION STYLE	SCALE	DESIGN UNITS	THIRD ANGLE PROJECTION		
			mm	INCH	MM ONLY	NTS	METRIC	⊙	∟	
D7	PG8. +879140108 EC NO: S2010-0695 DRW:ATSEE 2010/02/11 CHKD:PTLIM 2004/12/08 APPR:MLONG 2010/06/05	$F_A=0$ $F_C=0$ $F_P=0$	4 PLACES ± --- ± ---	3 PLACES ± --- ± ---	2 PLACES ± 0.20 ± ---	1 PLACE ± --- ± ---	ANGULAR ± 3 °	DRAWN BY: KCHO CHECKED BY: PTLIM APPROVED BY: SCLOW	DATE: 2004/11/05 DATE: 2004/12/08 DATE: 2004/12/10	TITLE: 2.54MM PITCH DUAL ROW HEADER SINGLE WAFER, T/H
DRAFT WHERE APPLICABLE MUST REMAIN WITHIN DIMENSIONS			SEE TABLE		MATERIAL NO. SD-87914-013		DOCUMENT NO. MOLEX INCORPORATED		SHEET NO. 2 OF 46	
THIS DRAWING CONTAINS INFORMATION THAT IS PROPRIETARY TO MOLEX INCORPORATED AND SHOULD NOT BE USED WITHOUT WRITTEN PERMISSION										

PART NO FOR TRAY PACKAGING	PART NO. FOR TUBE WITHOUT CAP PACKAGING	PART NO. FOR TUBE WITH CAP PACKAGING	PART NO. FOR TAPE & REEL WITHOUT CAP PACKAGING	PART NO. FOR TAPE & REEL WITH CAP PACKAGING	CKT SIZE	VOID POSITION	PLATING TYPE	DIMENSION				
								A	B	F	M	P
								F	87914-0211	-----	-----	-----
	87914-0221	-----	-----	-----	2	----	1	2.54	----	12.25	7.00	2.96
	87914-0231	-----	-----	-----	2	----	1	2.54	----	13.38	6.09	5.00
	87914-0212	-----	-----	-----	2	----	2	2.54	----	10.92	5.84	2.79
	87914-0222	-----	-----	-----	2	----	2	2.54	----	12.25	7.00	2.96
	87914-0232	-----	-----	-----	2	----	2	2.54	----	13.38	6.09	5.00
E	87914-0213	-----	-----	-----	2	----	3	2.54	----	10.92	5.84	2.79
	87914-0223	-----	-----	-----	2	----	3	2.54	----	12.25	7.00	2.96
	87914-0233	-----	-----	-----	2	----	3	2.54	----	13.38	6.09	5.00
	87914-0214	-----	-----	-----	2	----	4	2.54	----	10.92	5.84	2.79
	87914-0224	-----	-----	-----	2	----	4	2.54	----	12.25	7.00	2.96
	87914-0234	-----	-----	-----	2	----	4	2.54	----	13.38	6.09	5.00
D	87914-0215	-----	-----	-----	2	----	5	2.54	----	10.92	5.84	2.79
	87914-0225	-----	-----	-----	2	----	5	2.54	----	12.25	7.00	2.96
	87914-0235	-----	-----	-----	2	----	5	2.54	----	13.38	6.09	5.00
	87914-0216	-----	-----	-----	2	----	6	2.54	----	10.92	5.84	2.79
	87914-0226	-----	-----	-----	2	----	6	2.54	----	12.25	7.00	2.96
	87914-0236	-----	-----	-----	2	----	6	2.54	----	13.38	6.09	5.00
C												
B												

<b>PG8. +879140108</b> EC NO: S2010-0695 DRWN:ATSEE 2010/02/11 CHKD:PTLIM 2004/12/08 APPR:MLONG 2010/06/05 <b>D7</b>	QUALITY SYMBOLS $F_A=0$ $F_G=0$ $F_P=0$	GENERAL TOLERANCES (UNLESS SPECIFIED)		DIMENSION STYLE <b>MM ONLY</b>		SCALE <b>NTS</b>	DESIGN UNITS <b>METRIC</b>	THIRD ANGLE PROJECTION			
		4 PLACES $\pm$ --- $\pm$ --- 3 PLACES $\pm$ --- $\pm$ --- 2 PLACES $\pm 0.20$ $\pm$ --- 1 PLACE $\pm$ --- $\pm$ ---	mm      INCH	DRAWN BY KCHO	DATE 2004/11/05	TITLE <b>2.54MM PITCH DUAL ROW HEADER SINGLE WAFER, T/H</b>					
		ANGULAR $\pm 3^\circ$		CHECKED BY PTLIM	DATE 2004/12/08	MOLEX INCORPORATED					
		DRAFT WHERE APPLICABLE MUST REMAIN WITHIN DIMENSIONS		APPROVED BY SCLOW	DATE 2004/12/10	MATERIAL NO. <b>SEE TABLE</b>	DOCUMENT NO. <b>SD-87914-013</b>	SHEET NO. <b>3 OF 46</b>			

	10	9	8	7	6	5	4	3	2	1			
	PART NO FOR TRAY PACKAGING	PART NO. FOR TUBE WITHOUT CAP PACKAGING	PART NO. FOR TUBE WITH CAP PACKAGING	PART NO. FOR TAPE & REEL WITHOUT CAP PACKAGING	PART NO. FOR TAPE & REEL WITH CAP PACKAGING	CKT SIZE	VOID POSITION	PLATING TYPE	DIMENSION				
								A	B	F	M	P	
F	87914-0411	-----	-----	-----	-----	4	-----	1	5.08	2.54	10.92	5.84	2.79
	87914-0421	-----	-----	-----	-----	4	-----	1	5.08	2.54	12.25	7.00	2.96
	87914-0431	-----	-----	-----	-----	4	-----	1	5.08	2.54	13.38	6.09	5.00
	87914-0412	-----	-----	-----	-----	4	-----	2	5.08	2.54	10.92	5.84	2.79
	87914-0422	-----	-----	-----	-----	4	-----	2	5.08	2.54	12.25	7.00	2.96
	87914-0432	-----	-----	-----	-----	4	-----	2	5.08	2.54	13.38	6.09	5.00
E	87914-0413	-----	-----	-----	-----	4	-----	3	5.08	2.54	10.92	5.84	2.79
	87914-0423	-----	-----	-----	-----	4	-----	3	5.08	2.54	12.25	7.00	2.96
	87914-0433	-----	-----	-----	-----	4	-----	3	5.08	2.54	13.38	6.09	5.00
	87914-0414	-----	-----	-----	-----	4	-----	4	5.08	2.54	10.92	5.84	2.79
	87914-0424	-----	-----	-----	-----	4	-----	4	5.08	2.54	12.25	7.00	2.96
	87914-0434	-----	-----	-----	-----	4	-----	4	5.08	2.54	13.38	6.09	5.00
D	87914-0415	-----	-----	-----	-----	4	-----	5	5.08	2.54	10.92	5.84	2.79
	87914-0425	-----	-----	-----	-----	4	-----	5	5.08	2.54	12.25	7.00	2.96
	87914-0435	-----	-----	-----	-----	4	-----	5	5.08	2.54	13.38	6.09	5.00
	87914-0416	-----	-----	-----	-----	4	-----	6	5.08	2.54	10.92	5.84	2.79
	87914-0426	-----	-----	-----	-----	4	-----	6	5.08	2.54	12.25	7.00	2.96
	87914-0436	-----	-----	-----	-----	4	-----	6	5.08	2.54	13.38	6.09	5.00
C													
B													

<b>PG8. +879140108</b> EC NO: S2010-0695 DRWN:ATSEE 2010/02/11 CHKD:PTLIM 2004/12/08 APPR:MLONG 2010/06/05 <b>D7</b>	QUALITY SYMBOLS $\nabla_A=0$ $\nabla_C=0$ $\nabla_P=0$	GENERAL TOLERANCES (UNLESS SPECIFIED)		DIMENSION STYLE <b>MM ONLY</b>		SCALE NTS	DESIGN UNITS METRIC	THIRD ANGLE PROJECTION		
			mm      INCH	DRAWN BY KCHO	DATE 2004/11/05	TITLE <b>2.54MM PITCH          DUAL ROW HEADER          SINGLE WAFER, T/H</b>				
			4 PLACES ± --- ± --- 3 PLACES ± --- ± --- 2 PLACES ± 0.20 ± --- 1 PLACE ± --- ± ---	CHECKED BY PTLIM	DATE 2004/12/08	MOLEX INCORPORATED				
			ANGULAR ± 3 °	APPROVED BY SCLOW	DATE 2004/12/10	MATERIAL NO. <b>SEE TABLE</b>	DOCUMENT NO. <b>SD-87914-013</b>	SHEET NO. <b>4 OF 46</b>		

DRAFT WHERE APPLICABLE MUST REMAIN WITHIN DIMENSIONS

SIZE **A3** THIS DRAWING CONTAINS INFORMATION THAT IS PROPRIETARY TO MOLEX INCORPORATED AND SHOULD NOT BE USED WITHOUT WRITTEN PERMISSION

PART NO FOR TRAY PACKAGING	PART NO. FOR TUBE WITHOUT CAP PACKAGING	PART NO. FOR TUBE WITH CAP PACKAGING	PART NO. FOR TAPE & REEL WITHOUT CAP PACKAGING	PART NO. FOR TAPE & REEL WITH CAP PACKAGING	CKT SIZE	VOID POSITION	PLATING TYPE	DIMENSION					
								A	B	F	M	P	G
87914-0611	-----	-----	-----	-----	6	----	1	7.62	5.08	10.92	5.84	2.79	----
87914-0621	-----	-----	-----	-----	6	----	1	7.62	5.08	12.25	7.00	2.96	----
87914-0631	-----	-----	-----	-----	6	----	1	7.62	5.08	13.38	6.09	5.00	----
87914-0612	-----	-----	-----	-----	6	----	2	7.62	5.08	10.92	5.84	2.79	----
87914-0622	-----	-----	-----	-----	6	----	2	7.62	5.08	12.25	7.00	2.96	----
87914-0632	-----	-----	-----	-----	6	----	2	7.62	5.08	13.38	6.09	5.00	----
87914-0613	-----	-----	-----	-----	6	----	3	7.62	5.08	10.92	5.84	2.79	----
87914-0623	-----	-----	-----	-----	6	----	3	7.62	5.08	12.25	7.00	2.96	----
87914-0633	-----	-----	-----	-----	6	----	3	7.62	5.08	13.38	6.09	5.00	----
87914-0614	-----	-----	-----	-----	6	----	4	7.62	5.08	10.92	5.84	2.79	----
87914-0624	-----	-----	-----	-----	6	----	4	7.62	5.08	12.25	7.00	2.96	----
87914-0634	-----	-----	-----	-----	6	----	4	7.62	5.08	13.38	6.09	5.00	----
87914-0615	-----	-----	-----	-----	6	----	5	7.62	5.08	10.92	5.84	2.79	----
87914-0625	-----	-----	-----	-----	6	----	5	7.62	5.08	12.25	7.00	2.96	----
87914-0635	-----	-----	-----	-----	6	----	5	7.62	5.08	13.38	6.09	5.00	----
87914-0616	-----	-----	-----	-----	6	----	6	7.62	5.08	10.92	5.84	2.79	----
87914-0626	-----	-----	-----	-----	6	----	6	7.62	5.08	12.25	7.00	2.96	----
87914-0636	-----	-----	-----	-----	6	----	6	7.62	5.08	13.38	6.09	5.00	----
-----	-----	-----	-----	87914-0627	6	----	6	7.62	5.08	13.55	8.08	3.18	14.70

B

<b>PG8. +879140108</b> EC NO: S2010-0695 DRWN:ATSEE 2010/02/11 CHKD:PTLIM 2004/12/08 APPR:MLONG 2010/06/05	DESCRIPTION <b>D7</b>	QUALITY SYMBOLS	GENERAL TOLERANCES (UNLESS SPECIFIED)	DIMENSION STYLE <b>MM ONLY</b>	SCALE <b>NTS</b>	DESIGN UNITS <b>METRIC</b>	THIRD ANGLE PROJECTION		
		$F_A=0$ $F_G=0$ $F_P=0$	mm    INCH 4 PLACES ± --- ± --- 3 PLACES ± --- ± --- 2 PLACES ± 0.20 ± --- 1 PLACE ± --- ± --- ANGULAR ± 3 °	DRAWN BY    DATE KCHO        2004/11/05 CHECKED BY    DATE PTLIM        2004/12/08 APPROVED BY    DATE SCLOW        2004/12/10	<b>2.54MM PITCH DUAL ROW HEADER SINGLE WAFER, T/H</b>				
		DRAFT WHERE APPLICABLE MUST REMAIN WITHIN DIMENSIONS			MATERIAL NO.    DOCUMENT NO. <b>SEE TABLE</b> <b>SD-87914-013</b>	<b>MOLEX INCORPORATED</b>			
					SIZE <b>A3</b>	THIS DRAWING CONTAINS INFORMATION THAT IS PROPRIETARY TO MOLEX INCORPORATED AND SHOULD NOT BE USED WITHOUT WRITTEN PERMISSION			

F	PART NO FOR TRAY PACKAGING	PART NO. FOR TUBE WITHOUT CAP PACKAGING	PART NO. FOR TUBE WITH CAP PACKAGING	PART NO. FOR TAPE & REEL WITHOUT CAP PACKAGING	PART NO. FOR TAPE & REEL WITH CAP PACKAGING	CKT SIZE	VOID POSITION	PLATING TYPE	DIMENSION				
									A	B	F	M	P
	87914-0009	-----	-----	-----	-----	6	-----	1	7.62	5.08	18.84	13.25	3.30
	87914-0642	-----	-----	-----	-----	6	-----	2	7.62	5.08	18.84	13.25	3.30
	87914-0643	-----	-----	-----	-----	6	-----	3	7.62	5.08	18.84	13.25	3.30
	87914-0644	-----	-----	-----	-----	6	-----	4	7.62	5.08	18.84	13.25	3.30
	87914-0645	-----	-----	-----	-----	6	-----	5	7.62	5.08	18.84	13.25	3.30
	87914-0646	-----	-----	-----	-----	6	-----	6	7.62	5.08	18.84	13.25	3.30
E													
D													
C													

<b>PG8. +879140108</b> EC NO: S2010-0695 DRWN:ATSEE 2010/02/11 CHKD:PTLIM 2004/12/08 APPR:MLONG 2010/06/05	<b>QUALITY SYMBOLS</b> $\nabla_A = 0$ $\nabla_C = 0$ $\nabla_P = 0$	<b>GENERAL TOLERANCES (UNLESS SPECIFIED)</b> 4 PLACES ± --- ± --- 3 PLACES ± --- ± --- 2 PLACES ± 0.20 ± --- 1 PLACE ± --- ± --- ANGULAR ± 3 °	<b>DIMENSION STYLE</b> <b>MM ONLY</b> DRAWN BY: KCHO DATE: 2004/11/05 CHECKED BY: PTLIM DATE: 2004/12/08 APPROVED BY: SCLOW DATE: 2004/12/10	SCALE: NTS DESIGN UNITS: METRIC THIRD ANGLE PROJECTION	TITLE: <b>2.54MM PITCH          DUAL ROW HEADER          SINGLE WAFER, T/H</b> <b>MOLEX INCORPORATED</b>	MATERIAL NO.: SEE TABLE DOCUMENT NO.: SD-87914-013 SHEET NO.: 6 OF 46
	D7	DRAFT WHERE APPLICABLE MUST REMAIN WITHIN DIMENSIONS	THIS DRAWING CONTAINS INFORMATION THAT IS PROPRIETARY TO MOLEX INCORPORATED AND SHOULD NOT BE USED WITHOUT WRITTEN PERMISSION			



	10	9	8	7	6	5	4	3	2	1				
	PART NO. FOR TRAY PACKAGING	PART NO. FOR TUBE WITHOUT CAP PACKAGING	PART NO. FOR TUBE WITH CAP PACKAGING	PART NO. FOR TAPE & REEL WITHOUT CAP PACKAGING	PART NO. FOR TAPE & REEL WITH CAP PACKAGING	CKT SIZE	VOID POSITION	PLATING TYPE	DIMENSION					
									A	B	F	M	P	G
F	87914-0811	-----	-----	-----	-----	8	-----	1	10.16	7.62	10.92	5.84	2.79	----
	87914-0821	-----	-----	-----	-----	8	-----	1	10.16	7.62	12.25	7.00	2.96	----
	87914-0831	-----	-----	-----	-----	8	-----	1	10.16	7.62	13.38	6.09	5.00	----
	87914-0812	-----	-----	-----	-----	8	-----	2	10.16	7.62	10.92	5.84	2.79	----
	87914-0822	-----	-----	-----	-----	8	-----	2	10.16	7.62	12.25	7.00	2.96	----
	87914-0832	-----	-----	-----	-----	8	-----	2	10.16	7.62	13.38	6.09	5.00	----
E	87914-0813	-----	-----	-----	-----	8	-----	3	10.16	7.62	10.92	5.84	2.79	----
	87914-0823	-----	-----	-----	-----	8	-----	3	10.16	7.62	12.25	7.00	2.96	----
	87914-0833	-----	-----	-----	-----	8	-----	4	10.16	7.62	13.38	6.09	5.00	----
	87914-0814	-----	-----	-----	-----	8	-----	4	10.16	7.62	10.92	5.84	2.79	----
	87914-0824	-----	-----	-----	-----	8	-----	4	10.16	7.62	12.25	7.00	2.96	----
	87914-0834	-----	-----	-----	-----	8	-----	4	10.16	7.62	13.38	6.09	5.00	----
D	87914-0815	-----	-----	-----	-----	8	-----	5	10.16	7.62	10.92	5.84	2.79	----
	87914-0825	-----	-----	-----	-----	8	-----	5	10.16	7.62	12.25	7.00	2.96	----
	87914-0835	-----	-----	-----	-----	8	-----	5	10.16	7.62	13.38	6.09	5.00	----
	87914-0816	-----	-----	-----	-----	8	-----	6	10.16	7.62	10.92	5.84	2.79	----
	87914-0826	-----	-----	-----	-----	8	-----	6	10.16	7.62	12.25	7.00	2.96	----
	87914-0836	-----	-----	-----	-----	8	-----	6	10.16	7.62	13.38	6.09	5.00	----
C	87914-0807	-----	-----	-----	-----	8	2,3,4,5,6,8	6	10.16	7.62	21.75	16.51	2.95	----
	-----	-----	-----	-----	87914-0827	8	-----	6	10.16	7.62	13.55	8.08	3.18	14.70

B									
---	--	--	--	--	--	--	--	--	--

<b>PG8. +879140108</b> EC NO: S2010-0695 DRW:ATSEE 2010/02/11 CHKD:PTLIM 2004/12/08 APPR:MLONG 2010/06/05 <b>D7</b>	QUALITY SYMBOLS $F_A=0$ $F_G=0$ $F_P=0$	GENERAL TOLERANCES (UNLESS SPECIFIED) <table border="1"> <tr> <th></th> <th>mm</th> <th>INCH</th> </tr> <tr> <td>4 PLACES</td> <td>± ---</td> <td>± ---</td> </tr> <tr> <td>3 PLACES</td> <td>± ---</td> <td>± ---</td> </tr> <tr> <td>2 PLACES</td> <td>± 0.20</td> <td>± ---</td> </tr> <tr> <td>1 PLACE</td> <td>± ---</td> <td>± ---</td> </tr> </table>		mm	INCH	4 PLACES	± ---	± ---	3 PLACES	± ---	± ---	2 PLACES	± 0.20	± ---	1 PLACE	± ---	± ---	DIMENSION STYLE <b>MM ONLY</b>	SCALE <b>NTS</b>	DESIGN UNITS <b>METRIC</b>	THIRD ANGLE PROJECTION	DRAWN BY KCHO	DATE 2004/11/05	TITLE <b>2.54MM PITCH          DUAL ROW HEADER          SINGLE WAFER, T/H</b>
		mm	INCH																					
	4 PLACES	± ---	± ---																					
	3 PLACES	± ---	± ---																					
2 PLACES	± 0.20	± ---																						
1 PLACE	± ---	± ---																						
		APPROVED BY SCLOW	DATE 2004/12/10	<b>MOLEX INCORPORATED</b>																				
		DRAFT WHERE APPLICABLE MUST REMAIN WITHIN DIMENSIONS	SEE TABLE	MATERIAL NO. SD-87914-013	DOCUMENT NO. SD-87914-013				SHEET NO. 7 OF 46															
			THIS DRAWING CONTAINS INFORMATION THAT IS PROPRIETARY TO MOLEX INCORPORATED AND SHOULD NOT BE USED WITHOUT WRITTEN PERMISSION																					

F	PART NO FOR TRAY PACKAGING	PART NO. FOR TUBE WITHOUT CAP PACKAGING	PART NO. FOR TUBE WITH CAP PACKAGING	PART NO. FOR TAPE & REEL WITHOUT CAP PACKAGING	PART NO. FOR TAPE & REEL WITH CAP PACKAGING	CKT SIZE	VOID POSITION	PLATING TYPE	DIMENSION				
									A	B	F	M	P
87914-0841	-----	-----	-----	-----	-----	8	----	1	10.16	7.62	13.51	8.75	2.47
87914-0842	-----	-----	-----	-----	-----	8	----	2	10.16	7.62	13.51	8.75	2.47
87914-0843	-----	-----	-----	-----	-----	8	----	3	10.16	7.62	13.51	8.75	2.47
87914-0844	-----	-----	-----	-----	-----	8	----	4	10.16	7.62	13.51	8.75	2.47
87914-0845	-----	-----	-----	-----	-----	8	----	5	10.16	7.62	13.51	8.75	2.47
87914-0005	-----	-----	-----	-----	-----	8	----	6	10.16	7.62	13.51	8.75	2.47
E 87914-0108	-----	-----	-----	-----	-----	8	----	6	10.16	7.62	16.50	11.11	3.10
D													
C													

B														

A	PG8. +879140108 EC NO: S2010-0695 DRAWN:SEE 2010/02/11 CHKD:PTLIM 2004/12/08 APPR:MLONG 2010/06/05	QUALITY SYMBOLS	GENERAL TOLERANCES (UNLESS SPECIFIED)		DIMENSION STYLE MM ONLY		SCALE NTS	DESIGN UNITS METRIC	THIRD ANGLE PROJECTION		TITLE <b>2.54MM PITCH DUAL ROW HEADER SINGLE WAFER, T/H</b>
		$F_A=0$	4 PLACES	mm	INCH	DRAWN BY KCHO	DATE 2004/11/05	MATERIAL NO.		DOCUMENT NO. SD-87914-013	
		$F_C=0$	3 PLACES			CHECKED BY PTLIM	DATE 2004/12/08	SHEET NO. 8 OF 46			
$F_P=0$	2 PLACES			APPROVED BY SCLOW	DATE 2004/12/10	THIS DRAWING CONTAINS INFORMATION THAT IS PROPRIETARY TO MOLEX INCORPORATED AND SHOULD NOT BE USED WITHOUT WRITTEN PERMISSION					
	D7	DESCRIPTION	1 PLACE			SIZE A3					
			DRAFT WHERE APPLICABLE MUST REMAIN WITHIN DIMENSIONS		SEE TABLE						

10		9		8		7		6		5		4		3		2		1	
PART NO FOR TRAY PACKAGING	PART NO. FOR TUBE WITHOUT CAP PACKAGING	PART NO. FOR TUBE WITH CAP PACKAGING	PART NO. FOR TAPE & REEL WITHOUT CAP PACKAGING	PART NO. FOR TAPE & REEL WITH CAP PACKAGING	PART NO. FOR BULK PACKAGING	CKT SIZE	VOID POSITION	PLATING TYPE	DIMENSION										
									A	B	F	M	P	G					
F	87914-1011	-----	-----	-----	-----	10	----	1	12.70	10.16	10.92	5.84	2.79	----					
	87914-1021	-----	-----	-----	-----	10	----	1	12.70	10.16	12.25	7.00	2.96	----					
	87914-1031	-----	-----	-----	-----	10	----	1	12.70	10.16	13.38	6.09	5.00	----					
	87914-1012	-----	-----	-----	-----	10	----	2	12.70	10.16	10.92	5.84	2.79	----					
	87914-1022	-----	-----	-----	-----	10	----	2	12.70	10.16	12.25	7.00	2.96	----					
	87914-1032	-----	-----	-----	-----	10	----	2	12.70	10.16	13.38	6.09	5.00	----					
E	87914-1013	-----	-----	-----	-----	10	----	3	12.70	10.16	10.92	5.84	2.79	----					
	87914-1023	-----	-----	-----	-----	10	----	3	12.70	10.16	12.25	7.00	2.96	----					
	87914-1033	-----	-----	-----	-----	10	----	3	12.70	10.16	13.38	6.09	5.00	----					
	87914-1014	-----	-----	-----	-----	10	----	4	12.70	10.16	10.92	5.84	2.79	----					
	87914-1024	-----	-----	-----	-----	10	----	4	12.70	10.16	12.25	7.00	2.96	----					
	87914-1034	-----	-----	-----	-----	10	----	4	12.70	10.16	13.38	6.09	5.00	----					
D	87914-1015	-----	-----	-----	-----	10	----	5	12.70	10.16	10.92	5.84	2.79	----					
	87914-1025	-----	-----	-----	-----	10	----	5	12.70	10.16	12.25	7.00	2.96	----					
	87914-1035	-----	-----	-----	-----	10	----	5	12.70	10.16	13.38	6.09	5.00	----					
	87914-1016	-----	-----	-----	-----	10	----	6	12.70	10.16	10.92	5.84	2.79	----					
	87914-1026	-----	-----	-----	-----	10	----	6	12.70	10.16	12.25	7.00	2.96	----					
	87914-1036	-----	-----	-----	-----	10	----	6	12.70	10.16	13.38	6.09	5.00	----					
C	87914-0001	-----	-----	-----	-----	10	----	7	12.70	10.16	12.07	5.97	3.81	----					
	-----	-----	-----	-----	87914-1037	10	9	4	12.70	10.16	10.92	5.84	2.79	----					
B																			

<b>PG8, +879140108</b> EC NO: S2010-0695 DRWN:ATSEE 2010/02/11 CHKD:PTLIM 2004/12/08 APPR:MLONG 2010/06/05	QUALITY SYMBOLS $F_A=0$ $F_G=0$ $F_P=0$	GENERAL TOLERANCES (UNLESS SPECIFIED)		DIMENSION STYLE <b>MM ONLY</b>		SCALE <b>NTS</b>	DESIGN UNITS <b>METRIC</b>	THIRD ANGLE PROJECTION			
		4 PLACES $\pm$ --- $\pm$ --- 3 PLACES $\pm$ --- $\pm$ --- 2 PLACES $\pm 0.20$ $\pm$ --- 1 PLACE $\pm$ --- $\pm$ ---	mm      INCH	DRAWN BY KCHO	DATE 2004/11/05	TITLE <b>2.54MM PITCH DUAL ROW HEADER SINGLE WAFER, T/H</b>					
		ANGULAR $\pm 3^\circ$		CHECKED BY PTLIM	DATE 2004/12/08	MOLEX INCORPORATED					
		DRAFT WHERE APPLICABLE MUST REMAIN WITHIN DIMENSIONS		APPROVED BY SCLOW	DATE 2004/12/10	MATERIAL NO. <b>SEE TABLE</b>	DOCUMENT NO. <b>SD-87914-013</b>	SHEET NO. <b>9 OF 46</b>			

10 9 8 7 6 5 4 3 2 1

	PART NO FOR TRAY PACKAGING	PART NO. FOR TUBE WITHOUT CAP PACKAGING	PART NO. FOR TUBE WITH CAP PACKAGING	PART NO. FOR TAPE & REEL WITHOUT CAP PACKAGING	PART NO. FOR TAPE & REEL WITH CAP PACKAGING	CKT SIZE	VOID POSITION	PLATING TYPE	DIMENSION				
									A	B	F	M	P
F	87914-1211	-----	-----	-----	-----	12	----	1	15.24	12.70	10.92	5.84	2.79
	87914-1221	-----	-----	-----	-----	12	----	1	15.24	12.70	12.25	7.00	2.96
	87914-1231	-----	-----	-----	-----	12	----	1	15.24	12.70	13.38	6.09	5.00
	87914-1212	-----	-----	-----	-----	12	----	2	15.24	12.70	10.92	5.84	2.79
	87914-1222	-----	-----	-----	-----	12	----	2	15.24	12.70	12.25	7.00	2.96
	87914-1232	-----	-----	-----	-----	12	----	2	15.24	12.70	13.38	6.09	5.00
E	87914-1213	-----	-----	-----	-----	12	----	3	15.24	12.70	10.92	5.84	2.79
	87914-1223	-----	-----	-----	-----	12	----	3	15.24	12.70	12.25	7.00	2.96
	87914-1233	-----	-----	-----	-----	12	----	3	15.24	12.70	13.38	6.09	5.00
	87914-1214	-----	-----	-----	-----	12	----	4	15.24	12.70	10.92	5.84	2.79
	87914-1224	-----	-----	-----	-----	12	----	4	15.24	12.70	12.25	7.00	2.96
	87914-1234	-----	-----	-----	-----	12	----	4	15.24	12.70	13.38	6.09	5.00
D	87914-1215	-----	-----	-----	-----	12	----	5	15.24	12.70	10.92	5.84	2.79
	87914-1225	-----	-----	-----	-----	12	----	5	15.24	12.70	12.25	7.00	2.96
	87914-1235	-----	-----	-----	-----	12	----	5	15.24	12.70	13.38	6.09	5.00
	87914-1216	-----	-----	-----	-----	12	----	6	15.24	12.70	10.92	5.84	2.79
	87914-1226	-----	-----	-----	-----	12	----	6	15.24	12.70	12.25	7.00	2.96
	87914-1236	-----	-----	-----	-----	12	----	6	15.24	12.70	13.38	6.09	5.00

C B

<b>PG8. +879140108</b> EC NO: S2010-0695 DRWN:ATSEE 2010/02/11 CHKD:PTLIM 2004/12/08 APPR:MLONG 2010/06/05	DESCRIPTION REV	QUALITY SYMBOLS $\nabla_A = 0$ $\nabla_C = 0$ $\nabla_P = 0$	GENERAL TOLERANCES (UNLESS SPECIFIED) mm INCH 4 PLACES $\pm$ --- $\pm$ --- 3 PLACES $\pm$ --- $\pm$ --- 2 PLACES $\pm 0.20$ $\pm$ --- 1 PLACE $\pm$ --- $\pm$ --- ANGULAR $\pm 3^\circ$	DIMENSION STYLE <b>MM ONLY</b> DRAWN BY DATE KCHO 2004/11/05 CHECKED BY DATE PTLIM 2004/12/08 APPROVED BY DATE SCLOW 2004/12/10	SCALE NTS DESIGN UNITS METRIC THIRD ANGLE PROJECTION	TITLE 2.54MM PITCH DUAL ROW HEADER SINGLE WAFER, T/H MOLEX INCORPORATED DOCUMENT NO. SD-87914-013 SHEET NO. 10 OF 46
		DRAFT WHERE APPLICABLE MUST REMAIN WITHIN DIMENSIONS	SEE TABLE	THIS DRAWING CONTAINS INFORMATION THAT IS PROPRIETARY TO MOLEX INCORPORATED AND SHOULD NOT BE USED WITHOUT WRITTEN PERMISSION		

9 8 7 6 5 4 3 2 1

	10	9	8	7	6	5	4	3	2	1			
F	PART NO FOR TRAY PACKAGING	PART NO. FOR TUBE WITHOUT CAP PACKAGING	PART NO. FOR TUBE WITH CAP PACKAGING	PART NO. FOR TAPE & REEL WITHOUT CAP PACKAGING	PART NO. FOR TAPE & REEL WITH CAP PACKAGING	CKT SIZE	VOID POSITION	PLATING TYPE	DIMENSION				
									A	B	F	M	P
	87914-1251	-----	-----	-----	-----	12	-----	1	15.24	12.70	18.40	13.08	3.03
	87914-1252	-----	-----	-----	-----	12	-----	2	15.24	12.70	18.40	13.08	3.03
	87914-1253	-----	-----	-----	-----	12	-----	3	15.24	12.70	18.40	13.08	3.03
	87914-1254	-----	-----	-----	-----	12	-----	4	15.24	12.70	18.40	13.08	3.03
	87914-1255	-----	-----	-----	-----	12	-----	5	15.24	12.70	18.40	13.08	3.03
	87914-1256	-----	-----	-----	-----	12	-----	6	15.24	12.70	18.40	13.08	3.03
E	87914-1241	-----	-----	-----	-----	12	-----	1	15.24	12.70	12.50	6.95	3.26
	87914-1242	-----	-----	-----	-----	12	-----	2	15.24	12.70	12.50	6.95	3.26
	87914-1243	-----	-----	-----	-----	12	-----	3	15.24	12.70	12.50	6.95	3.26
	87914-1244	-----	-----	-----	-----	12	-----	4	15.24	12.70	12.50	6.95	3.26
	87914-1245	-----	-----	-----	-----	12	-----	5	15.24	12.70	12.50	6.95	3.26
D													
C													
B													

<b>PG8, +879140108</b> EC NO: S2010-0695 DRWN:ATSEE 2010/02/11 CHK:DP LJM 2004/12/08 APPR:MLONG 2010/06/05	QUALITY SYMBOLS	GENERAL TOLERANCES (UNLESS SPECIFIED)	DIMENSION STYLE	SCALE	DESIGN UNITS	THIRD ANGLE PROJECTION	
	$F_{\Delta} = 0$ $F_{\sigma} = 0$ $F_{\rho} = 0$	mm    INCH 4 PLACES ± --- ± --- 3 PLACES ± --- ± --- 2 PLACES ± 0.20 ± --- 1 PLACE ± --- ± --- ANGULAR ± 3 °	MM ONLY	NTS	METRIC		
D7	DESCRIPTION	DRAFT WHERE APPLICABLE MUST REMAIN WITHIN DIMENSIONS	DRAWN BY	DATE	TITLE	MOLEX INCORPORATED 2.54MM PITCH DUAL ROW HEADER SINGLE WAFER, T/H	
	REV		CHECKED BY	DATE	DATE		
	REV		APPROVED BY	DATE	DATE	DATE	DOCUMENT NO.
			SCLW	2004/12/10	SEE TABLE	SD-87914-013	11 OF 46
			MATERIAL NO.		THIS DRAWING CONTAINS INFORMATION THAT IS PROPRIETARY TO MOLEX INCORPORATED AND SHOULD NOT BE USED WITHOUT WRITTEN PERMISSION		

	10	9	8	7	6	5	4	3	2	1			
	PART NO FOR TRAY PACKAGING	PART NO. FOR TUBE WITHOUT CAP PACKAGING	PART NO. FOR TUBE WITH CAP PACKAGING	PART NO. FOR TAPE & REEL WITHOUT CAP PACKAGING	PART NO. FOR TAPE & REEL WITH CAP PACKAGING	CKT SIZE	VOID POSITION	PLATING TYPE	DIMENSION				
								A	B	F	M	P	
F	87914-1411	-----	-----	-----	-----	14	----	1	17.78	15.24	10.92	5.84	2.79
	87914-1421	-----	-----	-----	-----	14	----	1	17.78	15.24	12.25	7.00	2.96
	87914-1431	-----	-----	-----	-----	14	----	1	17.78	15.24	13.38	6.09	5.00
	87914-1412	-----	-----	-----	-----	14	----	2	17.78	15.24	10.92	5.84	2.79
	87914-1422	-----	-----	-----	-----	14	----	2	17.78	15.24	12.25	7.00	2.96
	87914-1432	-----	-----	-----	-----	14	----	2	17.78	15.24	13.38	6.09	5.00
E	87914-1413	-----	-----	-----	-----	14	----	3	17.78	15.24	10.92	5.84	2.79
	87914-1423	-----	-----	-----	-----	14	----	3	17.78	15.24	12.25	7.00	2.96
	87914-1433	-----	-----	-----	-----	14	----	3	17.78	15.24	13.38	6.09	5.00
	87914-1414	-----	-----	-----	-----	14	----	4	17.78	15.24	10.92	5.84	2.79
	87914-1424	-----	-----	-----	-----	14	----	4	17.78	15.24	12.25	7.00	2.96
	87914-1434	-----	-----	-----	-----	14	----	4	17.78	15.24	13.38	6.09	5.00
D	87914-1415	-----	-----	-----	-----	14	----	5	17.78	15.24	10.92	5.84	2.79
	87914-1425	-----	-----	-----	-----	14	----	5	17.78	15.24	12.25	7.00	2.96
	87914-1435	-----	-----	-----	-----	14	----	5	17.78	15.24	13.38	6.09	5.00
	87914-1416	-----	-----	-----	-----	14	----	6	17.78	15.24	10.92	5.84	2.79
	87914-1426	-----	-----	-----	-----	14	----	6	17.78	15.24	12.25	7.00	2.96
	87914-1436	-----	-----	-----	-----	14	----	6	17.78	15.24	13.38	6.09	5.00
C	87914-0007	-----	-----	-----	-----	14	----	6	17.78	15.24	13.42	8.08	3.05

B

<b>PG8. +879140108</b> EC NO: S2010-0695 DRWN:ATSEE 2010/02/11 CHKD:PTLIM 2004/12/08 APPR:MLONG 2010/06/05	D7	REV	QUALITY SYMBOLS $F_A=0$ $F_G=0$ $F_P=0$	GENERAL TOLERANCES (UNLESS SPECIFIED) <table border="1" style="width: 100%; border-collapse: collapse;"> <tr> <th></th> <th>mm</th> <th>INCH</th> </tr> <tr> <td>4 PLACES</td> <td>± ---</td> <td>± ---</td> </tr> <tr> <td>3 PLACES</td> <td>± ---</td> <td>± ---</td> </tr> <tr> <td>2 PLACES</td> <td>± 0.20</td> <td>± ---</td> </tr> <tr> <td>1 PLACE</td> <td>± ---</td> <td>± ---</td> </tr> </table>		mm	INCH	4 PLACES	± ---	± ---	3 PLACES	± ---	± ---	2 PLACES	± 0.20	± ---	1 PLACE	± ---	± ---	DIMENSION STYLE <b>MM ONLY</b>	SCALE <b>NTS</b>	DESIGN UNITS <b>METRIC</b>	THIRD ANGLE PROJECTION
				mm	INCH																		
			4 PLACES	± ---	± ---																		
			3 PLACES	± ---	± ---																		
2 PLACES	± 0.20	± ---																					
1 PLACE	± ---	± ---																					
DRAFT WHERE APPLICABLE MUST REMAIN WITHIN DIMENSIONS				DRAWN BY KCHO	DATE 2004/11/05	<b>2.54MM PITCH DUAL ROW HEADER SINGLE WAFER, T/H</b>																	
				CHECKED BY PTLIM	DATE 2004/12/08																		
				APPROVED BY SCLOW	DATE 2004/12/10	<b>MOLEX INCORPORATED</b>																	
				MATERIAL NO. <b>SEE TABLE</b>	DOCUMENT NO. <b>SD-87914-013</b>	SHEET NO. <b>12 OF 46</b>																	

10 | 9 | 8 | 7 | 6 | 5 | 4 | 3 | 2 | 1

	PART NO FOR TRAY PACKAGING	PART NO. FOR TUBE WITHOUT CAP PACKAGING	PART NO. FOR TUBE WITH CAP PACKAGING	PART NO. FOR TAPE & REEL WITHOUT CAP PACKAGING	PART NO. FOR TAPE & REEL WITH CAP PACKAGING	CKT SIZE	VOID POSITION	PLATING TYPE	DIMENSION				
									A	B	F	M	P
F	87914-1441	-----	-----	-----	-----	14	-----	1	17.78	15.24	13.42	8.08	3.05
	87914-1442	-----	-----	-----	-----	14	-----	2	17.78	15.24	13.42	8.08	3.05
	87914-1443	-----	-----	-----	-----	14	-----	3	17.78	15.24	13.42	8.08	3.05
	87914-1444	-----	-----	-----	-----	14	-----	4	17.78	15.24	13.42	8.08	3.05
	87914-1445	-----	-----	-----	-----	14	-----	5	17.78	15.24	13.42	8.08	3.05


PG8. +879140108 EC NO: S2010-0695 DRW:ATSEE 2010/02/11 CHKD:PTLIM 2004/12/08 APPR:MLONG 2010/06/05	REV	DESCRIPTION	QUALITY SYMBOLS	GENERAL TOLERANCES (UNLESS SPECIFIED)	DIMENSION STYLE	SCALE	DESIGN UNITS	THIRD ANGLE PROJECTION		
			$\nabla_A=0$		MM ONLY	NTS	METRIC	THIRD ANGLE PROJECTION		
			$\nabla_C=0$	4 PLACES	mm    INCH	DRAWN BY    DATE	2.54MM PITCH DUAL ROW HEADER SINGLE WAFER, T/H			
			$\nabla_F=0$	3 PLACES	± ---    ± ---	KCHO    2004/11/05	MOLEX INCORPORATED			
				2 PLACES	± 0.20    ± ---	CHECKED BY    DATE				
				1 PLACE	± ---    ± ---	PTLIM    2004/12/08	SD-87914-013			
				ANGULAR ± 3 °		APPROVED BY    DATE	13 OF 46			
			DRAFT WHERE APPLICABLE MUST REMAIN WITHIN DIMENSIONS		SCLW    2004/12/10	SEE TABLE				
					MATERIAL NO.	THIS DRAWING CONTAINS INFORMATION THAT IS PROPRIETARY TO MOLEX INCORPORATED AND SHOULD NOT BE USED WITHOUT WRITTEN PERMISSION				
					SIZE	A3				

F  
E  
D  
C  
B  
A

	10	9	8	7	6	5	4	3	2	1			
F	PART NO. FOR TRAY PACKAGING	PART NO. FOR TUBE WITHOUT CAP PACKAGING	PART NO. FOR TUBE WITH CAP PACKAGING	PART NO. FOR TAPE & REEL WITHOUT CAP PACKAGING	PART NO. FOR TAPE & REEL WITH CAP PACKAGING	CKT SIZE	VOID POSITION	PLATING TYPE	DIMENSION				
									A	B	F	M	P
	87914-1611	-----	-----	-----	-----	16	----	1	20.32	17.78	10.92	5.84	2.79
	87914-1621	-----	-----	-----	-----	16	----	1	20.32	17.78	12.25	7.00	2.96
	87914-1631	-----	-----	-----	-----	16	----	1	20.32	17.78	13.38	6.09	5.00
	87914-1612	-----	-----	-----	-----	16	----	2	20.32	17.78	10.92	5.84	2.79
	87914-1622	-----	-----	-----	-----	16	----	2	20.32	17.78	12.25	7.00	2.96
	87914-1632	-----	-----	-----	-----	16	----	2	20.32	17.78	13.38	6.09	5.00
E	87914-1613	-----	-----	-----	-----	16	----	3	20.32	17.78	10.92	5.84	2.79
	87914-1623	-----	-----	-----	-----	16	----	3	20.32	17.78	12.25	7.00	2.96
	87914-1633	-----	-----	-----	-----	16	----	3	20.32	17.78	13.38	6.09	5.00
	87914-1614	-----	-----	-----	-----	16	----	4	20.32	17.78	10.92	5.84	2.79
	87914-1624	-----	-----	-----	-----	16	----	4	20.32	17.78	12.25	7.00	2.96
	87914-1634	-----	-----	-----	-----	16	----	4	20.32	17.78	13.38	6.09	5.00
D	87914-1615	-----	-----	-----	-----	16	----	5	20.32	17.78	10.92	5.84	2.79
	87914-1625	-----	-----	-----	-----	16	----	5	20.32	17.78	12.25	7.00	2.96
	87914-1635	-----	-----	-----	-----	16	----	5	20.32	17.78	13.38	6.09	5.00
	87914-1616	-----	-----	-----	-----	16	----	6	20.32	17.78	10.92	5.84	2.79
	87914-1626	-----	-----	-----	-----	16	----	6	20.32	17.78	12.25	7.00	2.96
	87914-1636	-----	-----	-----	-----	16	----	6	20.32	17.78	13.38	6.09	5.00
C	87914-1600	-----	-----	-----	-----	16	----	6	20.32	17.78	9.49	4.50	2.70
B													

A	PG8. +879140108 EC NO: S2010-0695 DRWNATSEE 2010/02/11 CHKD:PTLIM 2004/12/08 APPR:MLONG 2010/06/05	DESCRIPTION REV	QUALITY SYMBOLS	GENERAL TOLERANCES (UNLESS SPECIFIED)	DIMENSION STYLE MM ONLY	SCALE NTS	DESIGN UNITS METRIC	THIRD ANGLE PROJECTION
			$F_A=0$	4 PLACES	mm INCH	DRAWN BY KCHO	DATE 2004/11/05	TITLE 2.54MM PITCH DUAL ROW HEADER SINGLE WAFER, T/H
			$F_C=0$	3 PLACES	$\pm$ --- $\pm$ ---	CHECKED BY PTLIM	DATE 2004/12/08	MOLEX INCORPORATED
			$F_P=0$	2 PLACES	$\pm$ 0.20 $\pm$ ---	APPROVED BY SCLOW	DATE 2004/12/10	
				1 PLACE	$\pm$ --- $\pm$ ---	ANGULAR $\pm$ 3 °		MATERIAL NO.
			DRAFT WHERE APPLICABLE MUST REMAIN WITHIN DIMENSIONS	SEE TABLE				



	10		9		8		7		6		5		4		3		2		1	
	PART NO FOR TRAY PACKAGING	PART NO. FOR TUBE WITHOUT CAP PACKAGING	PART NO. FOR TUBE WITH CAP PACKAGING	PART NO. FOR TAPE & REEL WITHOUT CAP PACKAGING	PART NO. FOR TAPE & REEL WITH CAP PACKAGING	CKT SIZE	VOID POSITION	PLATING TYPE	DIMENSION											
									A	B	F	M	P							
F	87914-1811	-----	-----	-----	-----	18	----	1	22.86	20.32	10.92	5.84	2.79							
	87914-1821	-----	-----	-----	-----	18	----	1	22.86	20.32	12.25	7.00	2.96							
	87914-1831	-----	-----	-----	-----	18	----	1	22.86	20.32	13.38	6.09	5.00							
	87914-1812	-----	-----	-----	-----	18	----	2	22.86	20.32	10.92	5.84	2.79							
	87914-1822	-----	-----	-----	-----	18	----	2	22.86	20.32	12.25	7.00	2.96							
	87914-1832	-----	-----	-----	-----	18	----	2	22.86	20.32	13.38	6.09	5.00							
E	87914-1813	-----	-----	-----	-----	18	----	3	22.86	20.32	10.92	5.84	2.79							
	87914-1823	-----	-----	-----	-----	18	----	3	22.86	20.32	12.25	7.00	2.96							
	87914-1833	-----	-----	-----	-----	18	----	3	22.86	20.32	13.38	6.09	5.00							
	87914-1814	-----	-----	-----	-----	18	----	4	22.86	20.32	10.92	5.84	2.79							
	87914-1824	-----	-----	-----	-----	18	----	4	22.86	20.32	12.25	7.00	2.96							
	87914-1834	-----	-----	-----	-----	18	----	4	22.86	20.32	13.38	6.09	5.00							
D	87914-1815	-----	-----	-----	-----	18	----	5	22.86	20.32	10.92	5.84	2.79							
	87914-1825	-----	-----	-----	-----	18	----	5	22.86	20.32	12.25	7.00	2.96							
	87914-1835	-----	-----	-----	-----	18	----	5	22.86	20.32	13.38	6.09	5.00							
	87914-1816	-----	-----	-----	-----	18	----	6	22.86	20.32	10.92	5.84	2.79							
	87914-1826	-----	-----	-----	-----	18	----	6	22.86	20.32	12.25	7.00	2.96							
	87914-1836	-----	-----	-----	-----	18	----	6	22.86	20.32	13.38	6.09	5.00							
C																				
B																				

<b>PG8. +879140108</b> EC NO: S2010-0695 DRWN:ATSEE 2010/02/11 CHKD:PTLIM 2004/12/08 APPR:MLONG 2010/06/05 <b>D7</b>	QUALITY SYMBOLS	GENERAL TOLERANCES (UNLESS SPECIFIED)	DIMENSION STYLE	SCALE	DESIGN UNITS	THIRD ANGLE PROJECTION	2.54MM PITCH DUAL ROW HEADER SINGLE WAFER, T/H <b>MOLEX</b> MOLEX INCORPORATED SD-87914-013 SHEET NO. 15 OF 46
	$F_A=0$ $F_G=0$ $F_P=0$	mm    INCH 4 PLACES ± --- ± --- 3 PLACES ± --- ± --- 2 PLACES ± 0.20 ± --- 1 PLACE ± --- ± --- ANGULAR ± 3 °	MM ONLY DRAWN BY: KCHO    DATE: 2004/11/05 CHECKED BY: PTLIM    DATE: 2004/12/08 APPROVED BY: SCLOW    DATE: 2004/12/10	NTS TITLE	METRIC		
		DRAFT WHERE APPLICABLE MUST REMAIN WITHIN DIMENSIONS	MATERIAL NO. <b>SEE TABLE</b>	DOCUMENT NO.			
		SIZE <b>A3</b>	THIS DRAWING CONTAINS INFORMATION THAT IS PROPRIETARY TO MOLEX INCORPORATED AND SHOULD NOT BE USED WITHOUT WRITTEN PERMISSION				

PART NO FOR TRAY PACKAGING	PART NO. FOR TUBE WITHOUT CAP PACKAGING	PART NO. FOR TUBE WITH CAP PACKAGING	PART NO. FOR TAPE & REEL WITHOUT CAP PACKAGING	PART NO. FOR TAPE & REEL WITH CAP PACKAGING	CKT SIZE	VOID POSITION	PLATING TYPE	DIMENSION				
								A	B	F	M	P
								F	87914-2011	-----	-----	-----
	87914-2021	-----	-----	-----	20	----	1	25.40	22.86	12.25	7.00	2.96
	87914-2031	-----	-----	-----	20	----	1	25.40	22.86	13.38	6.09	5.00
	87914-2012	-----	-----	-----	20	----	2	25.40	22.86	10.92	5.84	2.79
	87914-2022	-----	-----	-----	20	----	2	25.40	22.86	12.25	7.00	2.96
	87914-2032	-----	-----	-----	20	----	2	25.40	22.86	13.38	6.09	5.00
E	87914-2013	-----	-----	-----	20	----	3	25.40	22.86	10.92	5.84	2.79
	87914-2023	-----	-----	-----	20	----	3	25.40	22.86	12.25	7.00	2.96
	87914-2033	-----	-----	-----	20	----	3	25.40	22.86	13.38	6.09	5.00
	87914-2014	-----	-----	-----	20	----	4	25.40	22.86	10.92	5.84	2.79
	87914-2024	-----	-----	-----	20	----	4	25.40	22.86	12.25	7.00	2.96
	87914-2034	-----	-----	-----	20	----	4	25.40	22.86	13.38	6.09	5.00
D	87914-2015	-----	-----	-----	20	----	5	25.40	22.86	10.92	5.84	2.79
	87914-2025	-----	-----	-----	20	----	5	25.40	22.86	12.25	7.00	2.96
	87914-2035	-----	-----	-----	20	----	5	25.40	22.86	13.38	6.09	5.00
	87914-2016	-----	-----	-----	20	----	6	25.40	22.86	10.92	5.84	2.79
	87914-2026	-----	-----	-----	20	----	6	25.40	22.86	12.25	7.00	2.96
	87914-2036	-----	-----	-----	20	----	6	25.40	22.86	13.38	6.09	5.00
C												
B												

<b>PG8. +879140108</b> EC NO: S2010-0695 DRWN:ATSEE 2010/02/11 CHKD:PTLIM 2004/12/08 APPR:MLONG 2010/06/05 D7	QUALITY SYMBOLS	GENERAL TOLERANCES (UNLESS SPECIFIED)	DIMENSION STYLE	SCALE	DESIGN UNITS	THIRD ANGLE PROJECTION
	$F_A=0$	mm INCH	MM ONLY	NTS	METRIC	
	$F_G=0$	4 PLACES ± --- ± ---	DRAWN BY DATE	TITLE		
	$F_P=0$	3 PLACES ± --- ± ---	KCHO 2004/11/05	2.54MM PITCH DUAL ROW HEADER SINGLE WAFER, T/H		
		2 PLACES ± 0.20 ± ---	CHECKED BY DATE	MOLEX INCORPORATED		
	1 PLACE ± --- ± ---	PTLIM 2004/12/08	SD-87914-013			
	ANGULAR ± 3 °	APPROVED BY DATE	SHEET NO.			
		SCLOW 2004/12/10	16 OF 46			
		MATERIAL NO.	DOCUMENT NO.			
		SEE TABLE	THIS DRAWING CONTAINS INFORMATION THAT IS PROPRIETARY TO MOLEX INCORPORATED AND SHOULD NOT BE USED WITHOUT WRITTEN PERMISSION			

	10	9	8	7	6	5	4	3	2	1				
	PART NO FOR TRAY PACKAGING	PART NO. FOR TUBE WITHOUT CAP PACKAGING	PART NO. FOR TUBE WITH CAP PACKAGING	PART NO. FOR TAPE & REEL WITHOUT CAP PACKAGING	PART NO. FOR TAPE & REEL WITH CAP PACKAGING	CKT SIZE	VOID POSITION	PLATING TYPE	DIMENSION					
								A	B	F	M	P		
F	87914-2211	-----	-----	-----	-----	22	----	1	27.94	25.40	10.92	5.84	2.79	F
	87914-2221	-----	-----	-----	-----	22	----	1	27.94	25.40	12.25	7.00	2.96	
	87914-2231	-----	-----	-----	-----	22	----	1	27.94	25.40	13.38	6.09	5.00	
	87914-2212	-----	-----	-----	-----	22	----	2	27.94	25.40	10.92	5.84	2.79	
	87914-2222	-----	-----	-----	-----	22	----	2	27.94	25.40	12.25	7.00	2.96	
	87914-2232	-----	-----	-----	-----	22	----	2	27.94	25.40	13.38	6.09	5.00	
E	87914-2213	-----	-----	-----	-----	22	----	3	27.94	25.40	10.92	5.84	2.79	E
	87914-2223	-----	-----	-----	-----	22	----	3	27.94	25.40	12.25	7.00	2.96	
	87914-2233	-----	-----	-----	-----	22	----	3	27.94	25.40	13.38	6.09	5.00	
	87914-2214	-----	-----	-----	-----	22	----	4	27.94	25.40	10.92	5.84	2.79	
	87914-2224	-----	-----	-----	-----	22	----	4	27.94	25.40	12.25	7.00	2.96	
	87914-2234	-----	-----	-----	-----	22	----	4	27.94	25.40	13.38	6.09	5.00	
D	87914-2215	-----	-----	-----	-----	22	----	5	27.94	25.40	10.92	5.84	2.79	D
	87914-2225	-----	-----	-----	-----	22	----	5	27.94	25.40	12.25	7.00	2.96	
	87914-2235	-----	-----	-----	-----	22	----	5	27.94	25.40	13.38	6.09	5.00	
	87914-2216	-----	-----	-----	-----	22	----	6	27.94	25.40	10.92	5.84	2.79	
	87914-2226	-----	-----	-----	-----	22	----	6	27.94	25.40	12.25	7.00	2.96	
	87914-2236	-----	-----	-----	-----	22	----	6	27.94	25.40	13.38	6.09	5.00	
C														C
B														B

<b>PG8. +879140108</b> EC NO: S2010-0695 DRWN:ATSEE 2010/02/11 CHKD:PTLIM 2004/12/08 APPR:MLONG 2010/06/05 <b>D7</b>	QUALITY SYMBOLS $F_A=0$ $F_G=0$ $F_P=0$	GENERAL TOLERANCES (UNLESS SPECIFIED) <table border="1"> <tr><th colspan="2">mm</th><th>INCH</th></tr> <tr><td>4 PLACES</td><td>± ---</td><td>± ---</td></tr> <tr><td>3 PLACES</td><td>± ---</td><td>± ---</td></tr> <tr><td>2 PLACES</td><td>± 0.20</td><td>± ---</td></tr> <tr><td>1 PLACE</td><td>± ---</td><td>± ---</td></tr> </table>	mm		INCH	4 PLACES	± ---	± ---	3 PLACES	± ---	± ---	2 PLACES	± 0.20	± ---	1 PLACE	± ---	± ---	DIMENSION STYLE <b>MM ONLY</b> DRAWN BY: KCHO DATE: 2004/11/05 CHECKED BY: PTLIM DATE: 2004/12/08 APPROVED BY: SCLOW DATE: 2004/12/10 MATERIAL NO. SEE TABLE DOCUMENT NO. SD-87914-013	SCALE: NTS DESIGN UNITS: METRIC THIRD ANGLE PROJECTION	TITLE: 2.54MM PITCH DUAL ROW HEADER SINGLE WAFER, T/H <b>molex</b> MOLEX INCORPORATED SHEET NO. 17 OF 46
	mm		INCH																	
	4 PLACES	± ---	± ---																	
	3 PLACES	± ---	± ---																	
2 PLACES	± 0.20	± ---																		
1 PLACE	± ---	± ---																		
DRAFT WHERE APPLICABLE MUST REMAIN WITHIN DIMENSIONS		THIS DRAWING CONTAINS INFORMATION THAT IS PROPRIETARY TO MOLEX INCORPORATED AND SHOULD NOT BE USED WITHOUT WRITTEN PERMISSION																		

PART NO FOR TRAY PACKAGING	PART NO. FOR TUBE WITHOUT CAP PACKAGING	PART NO. FOR TUBE WITH CAP PACKAGING	PART NO. FOR TAPE & REEL WITHOUT CAP PACKAGING	PART NO. FOR TAPE & REEL WITH CAP PACKAGING	CKT SIZE	VOID POSITION	PLATING TYPE	DIMENSION				
								A	B	F	M	P
								F	87914-2411	-----	-----	-----
	87914-2421	-----	-----	-----	24	-----	1	30.48	27.94	12.25	7.00	2.96
	87914-2431	-----	-----	-----	24	-----	1	30.48	27.94	13.38	6.09	5.00
	87914-2412	-----	-----	-----	24	-----	2	30.48	27.94	10.92	5.84	2.79
	87914-2422	-----	-----	-----	24	-----	2	30.48	27.94	12.25	7.00	2.96
	87914-2432	-----	-----	-----	24	-----	2	30.48	27.94	13.38	6.09	5.00
E	87914-2413	-----	-----	-----	24	-----	3	30.48	27.94	10.92	5.84	2.79
	87914-2423	-----	-----	-----	24	-----	3	30.48	27.94	12.25	7.00	2.96
	87914-2433	-----	-----	-----	24	-----	3	30.48	27.94	13.38	6.09	5.00
	87914-2414	-----	-----	-----	24	-----	4	30.48	27.94	10.92	5.84	2.79
	87914-2424	-----	-----	-----	24	-----	4	30.48	27.94	12.25	7.00	2.96
	87914-2434	-----	-----	-----	24	-----	4	30.48	27.94	13.38	6.09	5.00
D	87914-2415	-----	-----	-----	24	-----	5	30.48	27.94	10.92	5.84	2.79
	87914-2425	-----	-----	-----	24	-----	5	30.48	27.94	12.25	7.00	2.96
	87914-2435	-----	-----	-----	24	-----	5	30.48	27.94	13.38	6.09	5.00
	87914-2416	-----	-----	-----	24	-----	6	30.48	27.94	10.92	5.84	2.79
	87914-2426	-----	-----	-----	24	-----	6	30.48	27.94	12.25	7.00	2.96
	87914-2436	-----	-----	-----	24	-----	6	30.48	27.94	13.38	6.09	5.00
C												
B												

<b>PG8, +879140108</b> EC NO: S2010-0695 DRWN:ATSEE 2010/02/11 CHKD:PTLIM 2004/12/08 APPR:MLONG 2010/06/05 <b>D7</b>	QUALITY SYMBOLS	GENERAL TOLERANCES (UNLESS SPECIFIED)	DIMENSION STYLE	SCALE	DESIGN UNITS	THIRD ANGLE PROJECTION
	$F_A=0$ $F_C=0$ $F_P=0$	mm    INCH 4 PLACES ± --- ± --- 3 PLACES ± --- ± --- 2 PLACES ± 0.20 ± --- 1 PLACE ± --- ± --- ANGULAR ± 3 °	MM ONLY	NTS	METRIC	
	DESCRIPTION	DRAFT WHERE APPLICABLE MUST REMAIN WITHIN DIMENSIONS	DRAWN BY: KCHO    DATE: 2004/11/05 CHECKED BY: PTLIM    DATE: 2004/12/08 APPROVED BY: SCLOW    DATE: 2004/12/10	TITLE	<b>2.54MM PITCH          DUAL ROW HEADER          SINGLE WAFER, T/H</b>	
			MATERIAL NO.    DOCUMENT NO.	<b>MOLEX INCORPORATED</b>		SHEET NO.
		SIZE: <b>A3</b>	<b>SEE TABLE</b>		<b>SD-87914-013</b>	<b>18 OF 46</b>
			THIS DRAWING CONTAINS INFORMATION THAT IS PROPRIETARY TO MOLEX INCORPORATED AND SHOULD NOT BE USED WITHOUT WRITTEN PERMISSION			

PART NO FOR TRAY PACKAGING	PART NO. FOR TUBE WITHOUT CAP PACKAGING	PART NO. FOR TUBE WITH CAP PACKAGING	PART NO. FOR TAPE & REEL WITHOUT CAP PACKAGING	PART NO. FOR TAPE & REEL WITH CAP PACKAGING	CKT SIZE	VOID POSITION	PLATING TYPE	DIMENSION				
								A	B	F	M	P
								F	87914-2611	-----	-----	-----
	87914-2621	-----	-----	-----	26	----	1	33.02	30.48	12.25	7.00	2.96
	87914-2631	-----	-----	-----	26	----	1	33.02	30.48	13.38	6.09	5.00
	87914-2612	-----	-----	-----	26	----	2	33.02	30.48	10.92	5.84	2.79
	87914-2622	-----	-----	-----	26	----	2	33.02	30.48	12.25	7.00	2.96
	87914-2632	-----	-----	-----	26	----	2	33.02	30.48	13.38	6.09	5.00
E	87914-2613	-----	-----	-----	26	----	3	33.02	30.48	10.92	5.84	2.79
	87914-2623	-----	-----	-----	26	----	3	33.02	30.48	12.25	7.00	2.96
	87914-2633	-----	-----	-----	26	----	3	33.02	30.48	13.38	6.09	5.00
	87914-2614	-----	-----	-----	26	----	4	33.02	30.48	10.92	5.84	2.79
	87914-2624	-----	-----	-----	26	----	4	33.02	30.48	12.25	7.00	2.96
	87914-2634	-----	-----	-----	26	----	4	33.02	30.48	13.38	6.09	5.00
D	87914-2615	-----	-----	-----	26	----	5	33.02	30.48	10.92	5.84	2.79
	87914-2625	-----	-----	-----	26	----	5	33.02	30.48	12.25	7.00	2.96
	87914-2635	-----	-----	-----	26	----	5	33.02	30.48	13.38	6.09	5.00
	87914-2616	-----	-----	-----	26	----	6	33.02	30.48	10.92	5.84	2.79
	87914-2626	-----	-----	-----	26	----	6	33.02	30.48	12.25	7.00	2.96
	87914-2636	-----	-----	-----	26	----	6	33.02	30.48	13.38	6.09	5.00
C												
B												

<b>PG8. +879140108</b> EC NO: S2010-0695 DRWN:ATSEE 2010/02/11 CHKD:PTLIM 2004/12/08 APPR:MLONG 2010/06/05 D7	QUALITY SYMBOLS $F_A=0$ $F_G=0$ $F_P=0$	GENERAL TOLERANCES (UNLESS SPECIFIED)		DIMENSION STYLE <b>MM ONLY</b>		SCALE <b>NTS</b>	DESIGN UNITS <b>METRIC</b>	THIRD ANGLE PROJECTION		
				DRAWN BY KCHO	DATE 2004/11/05	TITLE <b>2.54MM PITCH DUAL ROW HEADER SINGLE WAFER, T/H</b>				
				CHECKED BY PTLIM	DATE 2004/12/08	APPROVED BY SCLOW				
				MATERIAL NO. <b>SEE TABLE</b>		DATE 2004/12/10	DOCUMENT NO. <b>SD-87914-013</b>			SHEET NO. 19 OF 46
DRAFT WHERE APPLICABLE MUST REMAIN WITHIN DIMENSIONS		THIS DRAWING CONTAINS INFORMATION THAT IS PROPRIETARY TO MOLEX INCORPORATED AND SHOULD NOT BE USED WITHOUT WRITTEN PERMISSION								

	10		9		8		7		6		5		4		3		2		1	
	PART NO FOR TRAY PACKAGING	PART NO. FOR TUBE WITHOUT CAP PACKAGING	PART NO. FOR TUBE WITH CAP PACKAGING	PART NO. FOR TAPE & REEL WITHOUT CAP PACKAGING	PART NO. FOR TAPE & REEL WITH CAP PACKAGING	CKT SIZE	VOID POSITION	PLATING TYPE	DIMENSION											
									A	B	F	M	P							
F	87914-2811	-----	-----	-----	-----	28	----	1	35.56	33.02	10.92	5.84	2.79							
	87914-2821	-----	-----	-----	-----	28	----	1	35.56	33.02	12.25	7.00	2.96							
	87914-2831	-----	-----	-----	-----	28	----	1	35.56	33.02	13.38	6.09	5.00							
	87914-2812	-----	-----	-----	-----	28	----	2	35.56	33.02	10.92	5.84	2.79							
	87914-2822	-----	-----	-----	-----	28	----	2	35.56	33.02	12.25	7.00	2.96							
	87914-2832	-----	-----	-----	-----	28	----	2	35.56	33.02	13.38	6.09	5.00							
E	87914-2813	-----	-----	-----	-----	28	----	3	35.56	33.02	10.92	5.84	2.79							
	87914-2823	-----	-----	-----	-----	28	----	3	35.56	33.02	12.25	7.00	2.96							
	87914-2833	-----	-----	-----	-----	28	----	3	35.56	33.02	13.38	6.09	5.00							
	87914-2814	-----	-----	-----	-----	28	----	4	35.56	33.02	10.92	5.84	2.79							
	87914-2824	-----	-----	-----	-----	28	----	4	35.56	33.02	12.25	7.00	2.96							
	87914-2834	-----	-----	-----	-----	28	----	4	35.56	33.02	13.38	6.09	5.00							
D	87914-2815	-----	-----	-----	-----	28	----	5	35.56	33.02	10.92	5.84	2.79							
	87914-2825	-----	-----	-----	-----	28	----	5	35.56	33.02	12.25	7.00	2.96							
	87914-2835	-----	-----	-----	-----	28	----	5	35.56	33.02	13.38	6.09	5.00							
	87914-2816	-----	-----	-----	-----	28	----	6	35.56	33.02	10.92	5.84	2.79							
	87914-2826	-----	-----	-----	-----	28	----	6	35.56	33.02	12.25	7.00	2.96							
	87914-2836	-----	-----	-----	-----	28	----	6	35.56	33.02	13.38	6.09	5.00							
C																				
B																				

<b>PG8. +879140108</b> EC NO: S2010-0695 DRWN:ATSEE 2010/02/11 CHKD:PTLIM 2004/12/08 APPR:MLONG 2010/06/05	QUALITY SYMBOLS $F_A=0$ $F_C=0$ $F_P=0$	GENERAL TOLERANCES (UNLESS SPECIFIED)		DIMENSION STYLE <b>MM ONLY</b>		SCALE <b>NTS</b>	DESIGN UNITS <b>METRIC</b>	THIRD ANGLE PROJECTION		
				DRAWN BY KCHO	DATE 2004/11/05	TITLE <b>2.54MM PITCH DUAL ROW HEADER SINGLE WAFER, T/H</b>				
				CHECKED BY PTLIM	DATE 2004/12/08	<b>MOLEX INCORPORATED</b>				
				APPROVED BY SCLOW	DATE 2004/12/10	MATERIAL NO. <b>SEE TABLE</b>	DOCUMENT NO. <b>SD-87914-013</b>	SHEET NO. <b>20 OF 46</b>		
		DRAFT WHERE APPLICABLE MUST REMAIN WITHIN DIMENSIONS			THIS DRAWING CONTAINS INFORMATION THAT IS PROPRIETARY TO MOLEX INCORPORATED AND SHOULD NOT BE USED WITHOUT WRITTEN PERMISSION					

	10	9	8	7	6	5	4	3	2	1			
	PART NO FOR TRAY PACKAGING	PART NO. FOR TUBE WITHOUT CAP PACKAGING	PART NO. FOR TUBE WITH CAP PACKAGING	PART NO. FOR TAPE & REEL WITHOUT CAP PACKAGING	PART NO. FOR TAPE & REEL WITH CAP PACKAGING	CKT SIZE	VOID POSITION	PLATING TYPE	DIMENSION				
									A	B	F	M	P
F	87914-3011	-----	-----	-----	-----	30	----	1	38.10	35.56	10.92	5.84	2.79
	87914-3021	-----	-----	-----	-----	30	----	1	38.10	35.56	12.25	7.00	2.96
	87914-3031	-----	-----	-----	-----	30	----	1	38.10	35.56	13.38	6.09	5.00
	87914-3012	-----	-----	-----	-----	30	----	2	38.10	35.56	10.92	5.84	2.79
	87914-3022	-----	-----	-----	-----	30	----	2	38.10	35.56	12.25	7.00	2.96
	87914-3032	-----	-----	-----	-----	30	----	2	38.10	35.56	13.38	6.09	5.00
E	87914-3013	-----	-----	-----	-----	30	----	3	38.10	35.56	10.92	5.84	2.79
	87914-3023	-----	-----	-----	-----	30	----	3	38.10	35.56	12.25	7.00	2.96
	87914-3033	-----	-----	-----	-----	30	----	3	38.10	35.56	13.38	6.09	5.00
	87914-3014	-----	-----	-----	-----	30	----	4	38.10	35.56	10.92	5.84	2.79
	87914-3024	-----	-----	-----	-----	30	----	4	38.10	35.56	12.25	7.00	2.96
	87914-3034	-----	-----	-----	-----	30	----	4	38.10	35.56	13.38	6.09	5.00
D	87914-3015	-----	-----	-----	-----	30	----	5	38.10	35.56	10.92	5.84	2.79
	87914-3025	-----	-----	-----	-----	30	----	5	38.10	35.56	12.25	7.00	2.96
	87914-3035	-----	-----	-----	-----	30	----	5	38.10	35.56	13.38	6.09	5.00
	87914-3016	-----	-----	-----	-----	30	----	6	38.10	35.56	10.92	5.84	2.79
	87914-3026	-----	-----	-----	-----	30	----	6	38.10	35.56	12.25	7.00	2.96
	87914-3036	-----	-----	-----	-----	30	----	6	38.10	35.56	13.38	6.09	5.00
C													
B													

<b>PG8. +879140108</b> EC NO: S2010-0695 DRWN:ATSEE 2010/02/11 CHKD:PTLIM 2004/12/08 APPR:MLONG 2010/06/05 <b>D7</b>	QUALITY SYMBOLS $F_{A_1}=0$ $F_{C_1}=0$ $F_{P_1}=0$	GENERAL TOLERANCES (UNLESS SPECIFIED) mm INCH	DIMENSION STYLE <b>MM ONLY</b>	SCALE <b>NTS</b>	DESIGN UNITS <b>METRIC</b>	THIRD ANGLE PROJECTION
		4 PLACES ± --- ± --- 3 PLACES ± --- ± --- 2 PLACES ± 0.20 ± --- 1 PLACE ± --- ± --- ANGULAR ± 3 °	DRAWN BY DATE KCHO 2004/11/05 CHECKED BY DATE PTLIM 2004/12/08 APPROVED BY DATE SCLOW 2004/12/10	TITLE <b>2.54MM PITCH DUAL ROW HEADER SINGLE WAFER, T/H</b>		
		DRAFT WHERE APPLICABLE MUST REMAIN WITHIN DIMENSIONS	MATERIAL NO. <b>SEE TABLE</b>	<b>MOLEX INCORPORATED</b>	DOCUMENT NO. <b>SD-87914-013</b>	SHEET NO. <b>21 OF 46</b>

10	9	8	7	6	5	4	3	2	1
----	---	---	---	---	---	---	---	---	---

PART NO FOR TRAY PACKAGING	PART NO. FOR TUBE WITHOUT CAP PACKAGING	PART NO. FOR TUBE WITH CAP PACKAGING	PART NO. FOR TAPE & REEL WITHOUT CAP PACKAGING	PART NO. FOR TAPE & REEL WITH CAP PACKAGING	CKT SIZE	VOID POSITION	PLATING TYPE	DIMENSION				
								A	B	F	M	P
F 87914-3211	-----	-----	-----	-----	32	----	1	40.64	38.10	10.92	5.84	2.79
87914-3221	-----	-----	-----	-----	32	----	1	40.64	38.10	12.25	7.00	2.96
87914-3231	-----	-----	-----	-----	32	----	1	40.64	38.10	13.38	6.09	5.00
87914-3212	-----	-----	-----	-----	32	----	2	40.64	38.10	10.92	5.84	2.79
87914-3222	-----	-----	-----	-----	32	----	2	40.64	38.10	12.25	7.00	2.96
87914-3232	-----	-----	-----	-----	32	----	2	40.64	38.10	13.38	6.09	5.00
E 87914-3213	-----	-----	-----	-----	32	----	3	40.64	38.10	10.92	5.84	2.79
87914-3223	-----	-----	-----	-----	32	----	3	40.64	38.10	12.25	7.00	2.96
87914-3233	-----	-----	-----	-----	32	----	3	40.64	38.10	13.38	6.09	5.00
87914-3214	-----	-----	-----	-----	32	----	4	40.64	38.10	10.92	5.84	2.79
87914-3224	-----	-----	-----	-----	32	----	4	40.64	38.10	12.25	7.00	2.96
87914-3234	-----	-----	-----	-----	32	----	4	40.64	38.10	13.38	6.09	5.00
D 87914-3215	-----	-----	-----	-----	32	----	5	40.64	38.10	10.92	5.84	2.79
87914-3225	-----	-----	-----	-----	32	----	5	40.64	38.10	12.25	7.00	2.96
87914-3235	-----	-----	-----	-----	32	----	5	40.64	38.10	13.38	6.09	5.00
87914-3216	-----	-----	-----	-----	32	----	6	40.64	38.10	10.92	5.84	2.79
87914-3226	-----	-----	-----	-----	32	----	6	40.64	38.10	12.25	7.00	2.96
87914-3236	-----	-----	-----	-----	32	----	6	40.64	38.10	13.38	6.09	5.00
C												
B												

<b>PG8. +879140108</b> EC NO: S2010-0695 DRWN:ATSEE 2010/02/11 CHKD:PTLIM 2004/12/08 APPR:MLONG 2010/06/05 <b>D7</b>	QUALITY SYMBOLS $F_A=0$ $F_C=0$ $F_P=0$	GENERAL TOLERANCES (UNLESS SPECIFIED) <table border="1"> <tr><th colspan="2">mm</th><th>INCH</th></tr> <tr><td>4 PLACES</td><td>± ---</td><td>± ---</td></tr> <tr><td>3 PLACES</td><td>± ---</td><td>± ---</td></tr> <tr><td>2 PLACES</td><td>± 0.20</td><td>± ---</td></tr> <tr><td>1 PLACE</td><td>± ---</td><td>± ---</td></tr> </table> ANGULAR ± 3°	mm		INCH	4 PLACES	± ---	± ---	3 PLACES	± ---	± ---	2 PLACES	± 0.20	± ---	1 PLACE	± ---	± ---	DIMENSION STYLE <b>MM ONLY</b>	SCALE <b>NTS</b>	DESIGN UNITS <b>METRIC</b>	THIRD ANGLE PROJECTION	<b>2.54MM PITCH</b> <b>DUAL ROW HEADER</b> <b>SINGLE WAFER, T/H</b> <b>MOLEX INCORPORATED</b> DOCUMENT NO. <b>SD-87914-013</b> SHEET NO. <b>22 OF 46</b>
	mm		INCH																			
	4 PLACES	± ---	± ---																			
	3 PLACES	± ---	± ---																			
	2 PLACES	± 0.20	± ---																			
1 PLACE	± ---	± ---																				
DRAWN BY: <b>KCHO</b> DATE: <b>2004/11/05</b> CHECKED BY: <b>PTLIM</b> DATE: <b>2004/12/08</b> APPROVED BY: <b>SCLOW</b> DATE: <b>2004/12/10</b> MATERIAL NO.      DOCUMENT NO.	<b>DRAFT WHERE APPLICABLE MUST REMAIN WITHIN DIMENSIONS</b>	<b>SEE TABLE</b>	THIS DRAWING CONTAINS INFORMATION THAT IS PROPRIETARY TO MOLEX INCORPORATED AND SHOULD NOT BE USED WITHOUT WRITTEN PERMISSION																			
<b>SIZE A3</b>																						



PART NO FOR TRAY PACKAGING	PART NO. FOR TUBE WITHOUT CAP PACKAGING	PART NO. FOR TUBE WITH CAP PACKAGING	PART NO. FOR TAPE & REEL WITHOUT CAP PACKAGING	PART NO. FOR TAPE & REEL WITH CAP PACKAGING	CKT SIZE	VOID POSITION	PLATING TYPE	DIMENSION				
								A	B	F	M	D
								F	87914-3411	-----	-----	-----
	87914-3421	-----	-----	-----	34	----	1	43.18	40.64	12.25	7.00	2.96
	87914-3431	-----	-----	-----	34	----	1	43.18	40.64	13.38	6.09	5.00
	87914-3412	-----	-----	-----	34	----	2	43.18	40.64	10.92	5.84	2.79
	87914-3422	-----	-----	-----	34	----	2	43.18	40.64	12.25	7.00	2.96
	87914-3432	-----	-----	-----	34	----	2	43.18	40.64	13.38	6.09	5.00
E	87914-3413	-----	-----	-----	34	----	3	43.18	40.64	10.92	5.84	2.79
	87914-3423	-----	-----	-----	34	----	3	43.18	40.64	12.25	7.00	2.96
	87914-3433	-----	-----	-----	34	----	3	43.18	40.64	13.38	6.09	5.00
	87914-3414	-----	-----	-----	34	----	4	43.18	40.64	10.92	5.84	2.79
	87914-3424	-----	-----	-----	34	----	4	43.18	40.64	12.25	7.00	2.96
	87914-3434	-----	-----	-----	34	----	4	43.18	40.64	13.38	6.09	5.00
D	87914-3415	-----	-----	-----	34	----	5	43.18	40.64	10.92	5.84	2.79
	87914-3425	-----	-----	-----	34	----	5	43.18	40.64	12.25	7.00	2.96
	87914-3435	-----	-----	-----	34	----	5	43.18	40.64	13.38	6.09	5.00
	87914-3416	-----	-----	-----	34	----	6	43.18	40.64	10.92	5.84	2.79
	87914-3426	-----	-----	-----	34	----	6	43.18	40.64	12.25	7.00	2.96
	87914-3436	-----	-----	-----	34	----	6	43.18	40.64	13.38	6.09	5.00
C												
B												

<b>PG8. +879140108</b> EC NO: S2010-0695 DRWN:ATSEE 2010/02/11 CHKD:PTLIM 2004/12/08 APPR:MLONG 2010/06/05 <b>D7</b>	QUALITY SYMBOLS $F_A=0$ $F_C=0$ $F_P=0$	GENERAL TOLERANCES (UNLESS SPECIFIED)		DIMENSION STYLE <b>MM ONLY</b>		SCALE <b>NTS</b>	DESIGN UNITS <b>METRIC</b>	THIRD ANGLE PROJECTION			
				DRAWN BY KCHO	DATE 2004/11/05	TITLE <b>2.54MM PITCH DUAL ROW HEADER SINGLE WAFER, T/H</b>					
				CHECKED BY PTLIM	DATE 2004/12/08	<b>MOLEX INCORPORATED</b>					
				APPROVED BY SCLOW	DATE 2004/12/10	MATERIAL NO. <b>SEE TABLE</b>	DOCUMENT NO. <b>SD-87914-013</b>	SHEET NO. <b>23 OF 46</b>			
		DRAFT WHERE APPLICABLE MUST REMAIN WITHIN DIMENSIONS			THIS DRAWING CONTAINS INFORMATION THAT IS PROPRIETARY TO MOLEX INCORPORATED AND SHOULD NOT BE USED WITHOUT WRITTEN PERMISSION						

	10	9	8	7	6	5	4	3	2	1				
	PART NO. FOR TRAY PACKAGING	PART NO. FOR TUBE WITHOUT CAP PACKAGING	PART NO. FOR TUBE WITH CAP PACKAGING	PART NO. FOR TAPE & REEL WITHOUT CAP PACKAGING	PART NO. FOR TAPE & REEL WITH CAP PACKAGING	CKT SIZE	VOID POSITION	PLATING TYPE	DIMENSION					
								A	B	F	M	P		
F	87914-3611	-----	-----	-----	-----	36	----	1	45.72	43.18	10.92	5.84	2.79	F
	87914-3621	-----	-----	-----	-----	36	----	1	45.72	43.18	12.25	7.00	2.96	
	87914-3631	-----	-----	-----	-----	36	----	1	45.72	43.18	13.38	6.09	5.00	
	87914-3612	-----	-----	-----	-----	36	----	2	45.72	43.18	10.92	5.84	2.79	
	87914-3622	-----	-----	-----	-----	36	----	2	45.72	43.18	12.25	7.00	2.96	
	87914-3632	-----	-----	-----	-----	36	----	2	45.72	43.18	13.38	6.09	5.00	
E	87914-3613	-----	-----	-----	-----	36	----	3	45.72	43.18	10.92	5.84	2.79	E
	87914-3623	-----	-----	-----	-----	36	----	3	45.72	43.18	12.25	7.00	2.96	
	87914-3633	-----	-----	-----	-----	36	----	3	45.72	43.18	13.38	6.09	5.00	
	87914-3614	-----	-----	-----	-----	36	----	4	45.72	43.18	10.92	5.84	2.79	
	87914-3624	-----	-----	-----	-----	36	----	4	45.72	43.18	12.25	7.00	2.96	
	87914-3634	-----	-----	-----	-----	36	----	4	45.72	43.18	13.38	6.09	5.00	
D	87914-3615	-----	-----	-----	-----	36	----	5	45.72	43.18	10.92	5.84	2.79	D
	87914-3625	-----	-----	-----	-----	36	----	5	45.72	43.18	12.25	7.00	2.96	
	87914-3635	-----	-----	-----	-----	36	----	5	45.72	43.18	13.38	6.09	5.00	
	87914-3616	-----	-----	-----	-----	36	----	6	45.72	43.18	10.92	5.84	2.79	
	87914-3626	-----	-----	-----	-----	36	----	6	45.72	43.18	12.25	7.00	2.96	
	87914-3636	-----	-----	-----	-----	36	----	6	45.72	43.18	13.38	6.09	5.00	
C	87914-3637	-----	-----	-----	-----	36	----	6	45.72	43.18	12.10	7.21	2.60	C
B														B

<b>PG8. +879140108</b> EC NO: S2010-0695 DRWN:ATSEE 2010/02/11 CHKD:PTLIM 2004/12/08 APPR:MLONG 2010/06/05 <b>D7</b>	QUALITY SYMBOLS $F_A=0$ $F_G=0$ $F_P=0$	GENERAL TOLERANCES (UNLESS SPECIFIED) <table border="1"> <tr><th colspan="2">mm</th><th>INCH</th></tr> <tr><td>4 PLACES</td><td>± ---</td><td>± ---</td></tr> <tr><td>3 PLACES</td><td>± ---</td><td>± ---</td></tr> <tr><td>2 PLACES</td><td>± 0.20</td><td>± ---</td></tr> <tr><td>1 PLACE</td><td>± ---</td><td>± ---</td></tr> </table>	mm		INCH	4 PLACES	± ---	± ---	3 PLACES	± ---	± ---	2 PLACES	± 0.20	± ---	1 PLACE	± ---	± ---	DIMENSION STYLE <b>MM ONLY</b> DRAWN BY: KCHO DATE: 2004/11/05 CHECKED BY: PTLIM DATE: 2004/12/08 APPROVED BY: SCLOW DATE: 2004/12/10 MATERIAL NO. SEE TABLE	SCALE: NTS DESIGN UNITS: METRIC THIRD ANGLE PROJECTION	TITLE: <b>2.54MM PITCH          DUAL ROW HEADER          SINGLE WAFER, T/H</b> <b>MOLEX INCORPORATED</b> DOCUMENT NO. SD-87914-013	SHEET NO. 24 OF 46
	mm		INCH																		
	4 PLACES	± ---	± ---																		
	3 PLACES	± ---	± ---																		
2 PLACES	± 0.20	± ---																			
1 PLACE	± ---	± ---																			
DRAFT WHERE APPLICABLE MUST REMAIN WITHIN DIMENSIONS		SIZE: <b>A3</b> THIS DRAWING CONTAINS INFORMATION THAT IS PROPRIETARY TO MOLEX INCORPORATED AND SHOULD NOT BE USED WITHOUT WRITTEN PERMISSION																			

F	10	9	8	7	6	5	4	3	2	1			
	PART NO FOR TRAY PACKAGING	PART NO. FOR TUBE WITHOUT CAP PACKAGING	PART NO. FOR TUBE WITH CAP PACKAGING	PART NO. FOR TAPE & REEL WITHOUT CAP PACKAGING	PART NO. FOR TAPE & REEL WITH CAP PACKAGING	CKT SIZE	VOID POSITION	PLATING TYPE	DIMENSION				
									A	B	F	M	P
	87914-3811	-----	-----	-----	-----	38	----	1	48.26	45.72	10.92	5.84	2.79
	87914-3821	-----	-----	-----	-----	38	----	1	48.26	45.72	12.25	7.00	2.96
	87914-3831	-----	-----	-----	-----	38	----	1	48.26	45.72	13.38	6.09	5.00
	87914-3812	-----	-----	-----	-----	38	----	2	48.26	45.72	10.92	5.84	2.79
	87914-3822	-----	-----	-----	-----	38	----	2	48.26	45.72	12.25	7.00	2.96
	87914-3832	-----	-----	-----	-----	38	----	2	48.26	45.72	13.38	6.09	5.00
E	87914-3813	-----	-----	-----	-----	38	----	3	48.26	45.72	10.92	5.84	2.79
	87914-3823	-----	-----	-----	-----	38	----	3	48.26	45.72	12.25	7.00	2.96
	87914-3833	-----	-----	-----	-----	38	----	3	48.26	45.72	13.38	6.09	5.00
	87914-3814	-----	-----	-----	-----	38	----	4	48.26	45.72	10.92	5.84	2.79
	87914-3824	-----	-----	-----	-----	38	----	4	48.26	45.72	12.25	7.00	2.96
	87914-3834	-----	-----	-----	-----	38	----	4	48.26	45.72	13.38	6.09	5.00
D	87914-3815	-----	-----	-----	-----	38	----	5	48.26	45.72	10.92	5.84	2.79
	87914-3825	-----	-----	-----	-----	38	----	5	48.26	45.72	12.25	7.00	2.96
	87914-3835	-----	-----	-----	-----	38	----	5	48.26	45.72	13.38	6.09	5.00
	87914-3816	-----	-----	-----	-----	38	----	6	48.26	45.72	10.92	5.84	2.79
	87914-3826	-----	-----	-----	-----	38	----	6	48.26	45.72	12.25	7.00	2.96
	87914-3836	-----	-----	-----	-----	38	----	6	48.26	45.72	13.38	6.09	5.00
C													
B													

<b>PG8. +879140108</b> EC NO: S2010-0695 DRWN:ATSEE 2010/02/11 CHKD:PTLIM 2004/12/08 APPR:MLONG 2010/06/05 <b>D7</b>	QUALITY SYMBOLS $F_A=0$ $F_G=0$ $F_P=0$	GENERAL TOLERANCES (UNLESS SPECIFIED)		DIMENSION STYLE <b>MM ONLY</b>		SCALE <b>NTS</b>	DESIGN UNITS <b>METRIC</b>	THIRD ANGLE PROJECTION			
		4 PLACES $\pm$ --- $\pm$ ---	mm      INCH	DRAWN BY KCHO	DATE 2004/11/05	TITLE <b>2.54MM PITCH DUAL ROW HEADER SINGLE WAFER, T/H</b>					
		3 PLACES $\pm$ --- $\pm$ ---		CHECKED BY PTLIM	DATE 2004/12/08	MOLEX INCORPORATED					
		2 PLACES $\pm$ 0.20 $\pm$ ---		APPROVED BY SCLOW	DATE 2004/12/10	MATERIAL NO. <b>SEE TABLE</b>	DOCUMENT NO. <b>SD-87914-013</b>	SHEET NO. <b>25 OF 46</b>			
		1 PLACE $\pm$ --- $\pm$ ---		ANGULAR $\pm$ 3 °		DRAFT WHERE APPLICABLE MUST REMAIN WITHIN DIMENSIONS					
				SIZE <b>A3</b>		THIS DRAWING CONTAINS INFORMATION THAT IS PROPRIETARY TO MOLEX INCORPORATED AND SHOULD NOT BE USED WITHOUT WRITTEN PERMISSION					

	10	9	8	7	6	5	4	3	2	1				
	PART NO FOR TRAY PACKAGING	PART NO. FOR TUBE WITHOUT CAP PACKAGING	PART NO. FOR TUBE WITH CAP PACKAGING	PART NO. FOR TAPE & REEL WITHOUT CAP PACKAGING	PART NO. FOR TAPE & REEL WITH CAP PACKAGING	CKT SIZE	VOID POSITION	PLATING TYPE	DIMENSION					
								A	B	F	M	P		
F	87914-4011	-----	-----	-----	-----	40	----	1	50.80	48.26	10.92	5.84	2.79	F
	87914-4021	-----	-----	-----	-----	40	----	1	50.80	48.26	12.25	7.00	2.96	
	87914-4031	-----	-----	-----	-----	40	----	1	50.80	48.26	13.38	6.09	5.00	
	87914-4012	-----	-----	-----	-----	40	----	2	50.80	48.26	10.92	5.84	2.79	
	87914-4022	-----	-----	-----	-----	40	----	2	50.80	48.26	12.25	7.00	2.96	
	87914-4032	-----	-----	-----	-----	40	----	2	50.80	48.26	13.38	6.09	5.00	
E	87914-4013	-----	-----	-----	-----	40	----	3	50.80	48.26	10.92	5.84	2.79	E
	87914-4023	-----	-----	-----	-----	40	----	3	50.80	48.26	12.25	7.00	2.96	
	87914-4033	-----	-----	-----	-----	40	----	3	50.80	48.26	13.38	6.09	5.00	
	87914-4014	-----	-----	-----	-----	40	----	4	50.80	48.26	10.92	5.84	2.79	
	87914-4024	-----	-----	-----	-----	40	----	4	50.80	48.26	12.25	7.00	2.96	
	87914-4034	-----	-----	-----	-----	40	----	4	50.80	48.26	13.38	6.09	5.00	
D	87914-4015	-----	-----	-----	-----	40	----	5	50.80	48.26	10.92	5.84	2.79	D
	87914-4025	-----	-----	-----	-----	40	----	5	50.80	48.26	12.25	7.00	2.96	
	87914-4035	-----	-----	-----	-----	40	----	5	50.80	48.26	13.38	6.09	5.00	
	87914-4016	-----	-----	-----	-----	40	----	6	50.80	48.26	10.92	5.84	2.79	
	87914-4026	-----	-----	-----	-----	40	----	6	50.80	48.26	12.25	7.00	2.96	
	87914-4036	-----	-----	-----	-----	40	----	6	50.80	48.26	13.38	6.09	5.00	
C														C
B														B

<b>PG8. +879140108</b> EC NO: S2010-0695 DRWN:ATSEE 2010/02/11 CHKD:PTLIM 2004/12/08 APPR:MLONG 2010/06/05 <b>D7</b>	QUALITY SYMBOLS $F_A=0$ $F_G=0$ $F_P=0$	GENERAL TOLERANCES (UNLESS SPECIFIED) <table border="1"> <tr><th colspan="2">mm</th><th>INCH</th></tr> <tr><td>4 PLACES</td><td>± ---</td><td>± ---</td></tr> <tr><td>3 PLACES</td><td>± ---</td><td>± ---</td></tr> <tr><td>2 PLACES</td><td>± 0.20</td><td>± ---</td></tr> <tr><td>1 PLACE</td><td>± ---</td><td>± ---</td></tr> </table>	mm		INCH	4 PLACES	± ---	± ---	3 PLACES	± ---	± ---	2 PLACES	± 0.20	± ---	1 PLACE	± ---	± ---	DIMENSION STYLE <b>MM ONLY</b>	SCALE <b>NTS</b>	DESIGN UNITS <b>METRIC</b>	THIRD ANGLE PROJECTION	DRAWN BY KCHO	DATE 2004/11/05	TITLE <b>2.54MM PITCH          DUAL ROW HEADER          SINGLE WAFER, T/H</b>
	mm		INCH																					
	4 PLACES	± ---	± ---																					
	3 PLACES	± ---	± ---																					
2 PLACES	± 0.20	± ---																						
1 PLACE	± ---	± ---																						
DESCRIPTION DRAFT WHERE APPLICABLE MUST REMAIN WITHIN DIMENSIONS	APPROVED BY SCLOW	DATE 2004/12/10	MATERIAL NO. <b>SEE TABLE</b>	DOCUMENT NO. <b>SD-87914-013</b>	SHEET NO. 26 OF 46	<b>MOLEX INCORPORATED</b>	THIS DRAWING CONTAINS INFORMATION THAT IS PROPRIETARY TO MOLEX INCORPORATED AND SHOULD NOT BE USED WITHOUT WRITTEN PERMISSION																	

	10		9		8		7		6		5		4		3		2		1	
	PART NO FOR TRAY PACKAGING	PART NO. FOR TUBE WITHOUT CAP PACKAGING	PART NO. FOR TUBE WITH CAP PACKAGING	PART NO. FOR TAPE & REEL WITHOUT CAP PACKAGING	PART NO. FOR TAPE & REEL WITH CAP PACKAGING	CKT SIZE	VOID POSITION	PLATING TYPE	DIMENSION											
									A	B	F	M	P							
F	87914-4211	-----	-----	-----	-----	42	----	1	53.34	50.80	10.92	5.84	2.79							
	87914-4221	-----	-----	-----	-----	42	----	1	53.34	50.80	12.25	7.00	2.96							
	87914-4212	-----	-----	-----	-----	42	----	2	53.34	50.80	10.92	5.84	2.79							
	87914-4222	-----	-----	-----	-----	42	----	2	53.34	50.80	12.25	7.00	2.96							
	87914-4213	-----	-----	-----	-----	42	----	3	53.34	50.80	10.92	5.84	2.79							
	87914-4223	-----	-----	-----	-----	42	----	3	53.34	50.80	12.25	7.00	2.96							
E	87914-4214	-----	-----	-----	-----	42	----	4	53.34	50.80	10.92	5.84	2.79							
	87914-4224	-----	-----	-----	-----	42	----	4	53.34	50.80	12.25	7.00	2.96							
	87914-4215	-----	-----	-----	-----	42	----	5	53.34	50.80	10.92	5.84	2.79							
	87914-4225	-----	-----	-----	-----	42	----	5	53.34	50.80	12.25	7.00	2.96							
	87914-4216	-----	-----	-----	-----	42	----	6	53.34	50.80	10.92	5.84	2.79							
	87914-4226	-----	-----	-----	-----	42	----	6	53.34	50.80	12.25	7.00	2.96							
D																				
C																				
B																				

<b>PG8. +879140108</b> EC NO: S2010-0695 DRW: NATSEE 2010/02/11 CHKD: PTLIM 2004/12/08 APPR: MLONG 2010/06/05 <b>D7</b>	QUALITY SYMBOLS $F_A = 0$ $F_G = 0$ $F_P = 0$	GENERAL TOLERANCES (UNLESS SPECIFIED) <table border="1"> <thead> <tr> <th></th> <th>mm</th> <th>INCH</th> </tr> </thead> <tbody> <tr> <td>4 PLACES</td> <td>± ---</td> <td>± ---</td> </tr> <tr> <td>3 PLACES</td> <td>± ---</td> <td>± ---</td> </tr> <tr> <td>2 PLACES</td> <td>± 0.20</td> <td>± ---</td> </tr> <tr> <td>1 PLACE</td> <td>± ---</td> <td>± ---</td> </tr> </tbody> </table>		mm	INCH	4 PLACES	± ---	± ---	3 PLACES	± ---	± ---	2 PLACES	± 0.20	± ---	1 PLACE	± ---	± ---	DIMENSION STYLE <b>MM ONLY</b>	SCALE <b>NTS</b>	DESIGN UNITS <b>METRIC</b>	
		mm	INCH																		
	4 PLACES	± ---	± ---																		
	3 PLACES	± ---	± ---																		
2 PLACES	± 0.20	± ---																			
1 PLACE	± ---	± ---																			
			DRAWN BY KCHO	DATE 2004/11/05	TITLE <b>2.54MM PITCH DUAL ROW HEADER SINGLE WAFER, T/H</b>																
			CHECKED BY PTLIM	DATE 2004/12/08	<b>MOLEX INCORPORATED</b>																
			APPROVED BY SCLOW	DATE 2004/12/10	MATERIAL NO. <b>SEE TABLE</b>	DOCUMENT NO. <b>SD-87914-013</b>															
			DRAFT WHERE APPLICABLE MUST REMAIN WITHIN DIMENSIONS		SIZE <b>A3</b>	SHEET NO. <b>27 OF 46</b>															

THIS DRAWING CONTAINS INFORMATION THAT IS PROPRIETARY TO MOLEX INCORPORATED AND SHOULD NOT BE USED WITHOUT WRITTEN PERMISSION

	10	9	8	7	6	5	4	3	2	1			
	PART NO FOR TRAY PACKAGING	PART NO. FOR TUBE WITHOUT CAP PACKAGING	PART NO. FOR TUBE WITH CAP PACKAGING	PART NO. FOR TAPE & REEL WITHOUT CAP PACKAGING	PART NO. FOR TAPE & REEL WITH CAP PACKAGING	CKT SIZE	VOID POSITION	PLATING TYPE	DIMENSION				
									A	B	F	M	P
F	87914-4411	-----	-----	-----	-----	44	----	1	55.88	53.34	10.92	5.84	2.79
	87914-4421	-----	-----	-----	-----	44	----	1	55.88	53.34	12.25	7.00	2.96
	87914-4412	-----	-----	-----	-----	44	----	2	55.88	53.34	10.92	5.84	2.79
	87914-4422	-----	-----	-----	-----	44	----	2	55.88	53.34	12.25	7.00	2.96
	87914-4413	-----	-----	-----	-----	44	----	3	55.88	53.34	10.92	5.84	2.79
	87914-4423	-----	-----	-----	-----	44	----	3	55.88	53.34	12.25	7.00	2.96
E	87914-4414	-----	-----	-----	-----	44	----	4	55.88	53.34	10.92	5.84	2.79
	87914-4424	-----	-----	-----	-----	44	----	4	55.88	53.34	12.25	7.00	2.96
	87914-4415	-----	-----	-----	-----	44	----	5	55.88	53.34	10.92	5.84	2.79
	87914-4425	-----	-----	-----	-----	44	----	5	55.88	53.34	12.25	7.00	2.96
	87914-4416	-----	-----	-----	-----	44	----	6	55.88	53.34	10.92	5.84	2.79
	87914-4426	-----	-----	-----	-----	44	----	6	55.88	53.34	12.25	7.00	2.96
D													

PG8. +879140108 EC NO: S2010-0695 DRWN:ATSEE 2010/02/11 CHKD:PTLIM 2004/12/08 APPR:M LONG 2010/06/05 D7 REV	<b>QUALITY SYMBOLS</b> $\nabla_A = 0$ $\nabla_C = 0$ $\nabla_B = 0$	<b>GENERAL TOLERANCES (UNLESS SPECIFIED)</b> mm INCH 4 PLACES $\pm$ --- $\pm$ --- 3 PLACES $\pm$ --- $\pm$ --- 2 PLACES $\pm 0.20$ $\pm$ --- 1 PLACE $\pm$ --- $\pm$ --- ANGULAR $\pm 3^\circ$		<b>DIMENSION STYLE</b> MM ONLY DRAWN BY DATE KCHO 2004/11/05 CHECKED BY DATE PTLIM 2004/12/08 APPROVED BY DATE SCLOW 2004/12/10		SCALE NTS	DESIGN UNITS METRIC	THIRD ANGLE PROJECTION	TITLE 2.54MM PITCH DUAL ROW HEADER SINGLE WAFER, T/H
		DRAFT WHERE APPLICABLE MUST REMAIN WITHIN DIMENSIONS				MATERIAL NO. <b>SEE TABLE</b>	MOLEX INCORPORATED	DOCUMENT NO. SD-87914-013	SHEET NO. 28 OF 46
		THIS DRAWING CONTAINS INFORMATION THAT IS PROPRIETARY TO MOLEX INCORPORATED AND SHOULD NOT BE USED WITHOUT WRITTEN PERMISSION							


PG8, +879140108 EC NO: S2010-0695 DRWN:ATSEE 2010/02/11 CHKD:PTLIM 2004/12/08 APPR:MLONG 2010/06/05	DESCRIPTION REV	QUALITY SYMBOLS	GENERAL TOLERANCES (UNLESS SPECIFIED)	DIMENSION STYLE	SCALE	DESIGN UNITS	THIRD ANGLE PROJECTION																	
		$F_A=0$ $F_G=0$ $F_P=0$	<table border="1"> <tr> <th></th> <th>mm</th> <th>INCH</th> </tr> <tr> <td>4 PLACES</td> <td>± ---</td> <td>± ---</td> </tr> <tr> <td>3 PLACES</td> <td>± ---</td> <td>± ---</td> </tr> <tr> <td>2 PLACES</td> <td>± 0.20</td> <td>± ---</td> </tr> <tr> <td>1 PLACE</td> <td>± ---</td> <td>± ---</td> </tr> <tr> <td colspan="3">ANGULAR ± 3 °</td> </tr> </table>		mm	INCH		4 PLACES	± ---	± ---	3 PLACES	± ---	± ---	2 PLACES	± 0.20	± ---	1 PLACE	± ---	± ---	ANGULAR ± 3 °			MM ONLY	NTS
			mm	INCH																				
		4 PLACES	± ---	± ---																				
3 PLACES	± ---	± ---																						
2 PLACES	± 0.20	± ---																						
1 PLACE	± ---	± ---																						
ANGULAR ± 3 °																								
DRAWN BY DATE			TITLE		MOLEX INCORPORATED 2.54MM PITCH DUAL ROW HEADER SINGLE WAFER, T/H																			
CHECKED BY DATE			MATERIAL NO. DOCUMENT NO.																					
APPROVED BY DATE			SEE TABLE		SHEET NO. 29 OF 46																			
D7 DRAFT WHERE APPLICABLE MUST REMAIN WITHIN DIMENSIONS			THIS DRAWING CONTAINS INFORMATION THAT IS PROPRIETARY TO MOLEX INCORPORATED AND SHOULD NOT BE USED WITHOUT WRITTEN PERMISSION																					

	10		9		8		7		6		5		4		3		2		1		
	PART NO FOR TRAY PACKAGING	PART NO. FOR TUBE WITHOUT CAP PACKAGING	PART NO. FOR TUBE WITH CAP PACKAGING	PART NO. FOR TAPE & REEL WITHOUT CAP PACKAGING	PART NO. FOR TAPE & REEL WITH CAP PACKAGING	CKT SIZE	VOID POSITION	PLATING TYPE	DIMENSION												
									A	B	F	M	P								
F	87914-4811	-----	-----	-----	-----	48	----	1	60.96	58.42	10.92	5.84	2.79								
	87914-4821	-----	-----	-----	-----	48	----	1	60.96	58.42	12.25	7.00	2.96								
	87914-4812	-----	-----	-----	-----	48	----	2	60.96	58.42	10.92	5.84	2.79								
	87914-4822	-----	-----	-----	-----	48	----	2	60.96	58.42	12.25	7.00	2.96								
	87914-4813	-----	-----	-----	-----	48	----	3	60.96	58.42	10.92	5.84	2.79								
	87914-4823	-----	-----	-----	-----	48	----	3	60.96	58.42	12.25	7.00	2.96								
E	87914-4814	-----	-----	-----	-----	48	----	4	60.96	58.42	10.92	5.84	2.79								
	87914-4824	-----	-----	-----	-----	48	----	4	60.96	58.42	12.25	7.00	2.96								
	87914-4815	-----	-----	-----	-----	48	----	5	60.96	58.42	10.92	5.84	2.79								
	87914-4825	-----	-----	-----	-----	48	----	5	60.96	58.42	12.25	7.00	2.96								
	87914-4816	-----	-----	-----	-----	48	----	6	60.96	58.42	10.92	5.84	2.79								
	87914-4826	-----	-----	-----	-----	48	----	6	60.96	58.42	12.25	7.00	2.96								
D																					
C																					
B																					

<b>PG8, +879140108</b> EC NO: S2010-0695 DRWN:ATSEE 2010/02/11 CHKD:PTLIM 2004/12/08 APPR:MLONG 2010/06/05 <b>D7</b>	QUALITY SYMBOLS $F_A=0$ $F_G=0$ $F_P=0$	GENERAL TOLERANCES (UNLESS SPECIFIED)		DIMENSION STYLE <b>MM ONLY</b>		SCALE <b>NTS</b>	DESIGN UNITS <b>METRIC</b>	THIRD ANGLE PROJECTION		
		4 PLACES ± --- ± ---	mm INCH	DRAWN BY KCHO	DATE 2004/11/05	<b>2.54MM PITCH DUAL ROW HEADER SINGLE WAFER, T/H</b>  <b>MOLEX INCORPORATED</b>				
		3 PLACES ± --- ± ---		CHECKED BY PTLIM	DATE 2004/12/08					
		2 PLACES ± 0.20 ± ---		APPROVED BY SCLOW	DATE 2004/12/10					
		1 PLACE ± --- ± ---		MATERIAL NO.		DOCUMENT NO.				
DRAFT WHERE APPLICABLE MUST REMAIN WITHIN DIMENSIONS		ANGULAR ± 3 °		SEE TABLE		SD-87914-013				
				SIZE <b>A3</b>	THIS DRAWING CONTAINS INFORMATION THAT IS PROPRIETARY TO MOLEX INCORPORATED AND SHOULD NOT BE USED WITHOUT WRITTEN PERMISSION					





										DIMENSION				
PART NO FOR BULK PACKAGING	PART NO. FOR TUBE WITHOUT CAP PACKAGING	PART NO. FOR TUBE WITH CAP PACKAGING	PART NO. FOR TAPE & REEL WITHOUT CAP PACKAGING	PART NO. FOR TAPE & REEL WITH CAP PACKAGING	CKT SIZE	VOID POSITION	PLATING TYPE	A	B	F	M	P		

F	87914-5211	-----	-----	-----	52	-----	1	66.04	63.50	10.92	5.84	2.79
	87914-5221	-----	-----	-----	52	-----	1	66.04	63.50	12.25	7.00	2.96
	87914-5212	-----	-----	-----	52	-----	2	66.04	63.50	10.92	5.84	2.79
	87914-5222	-----	-----	-----	52	-----	2	66.04	63.50	12.25	7.00	2.96
	87914-5213	-----	-----	-----	52	-----	3	66.04	63.50	10.92	5.84	2.79
	87914-5223	-----	-----	-----	52	-----	3	66.04	63.50	12.25	7.00	2.96
E	87914-5214	-----	-----	-----	52	-----	4	66.04	63.50	10.92	5.84	2.79
	87914-5224	-----	-----	-----	52	-----	4	66.04	63.50	12.25	7.00	2.96
	87914-5215	-----	-----	-----	52	-----	5	66.04	63.50	10.92	5.84	2.79
	87914-5225	-----	-----	-----	52	-----	5	66.04	63.50	12.25	7.00	2.96
	87914-5216	-----	-----	-----	52	-----	6	66.04	63.50	10.92	5.84	2.79
	87914-5226	-----	-----	-----	52	-----	6	66.04	63.50	12.25	7.00	2.96
D												
C												
B												

PG8. +879140108 EC NO: S2010-0695 DRWN:ATSEE 2010/02/11 CHKD:PTLIM 2004/12/08 APPR:MLONG 2010/06/05		QUALITY SYMBOLS $F_{\Delta} = 0$ $F_{\nabla} = 0$ $F_{\square} = 0$	GENERAL TOLERANCES (UNLESS SPECIFIED) mm    INCH 4 PLACES ± --- ± --- 3 PLACES ± --- ± --- 2 PLACES ± 0.20 ± --- 1 PLACE ± --- ± --- ANGULAR ± 3 °	DIMENSION STYLE <b>MM ONLY</b> DRAWN BY    DATE KCHO    2004/11/05 CHECKED BY    DATE PTLIM    2004/12/08 APPROVED BY    DATE SCLOW    2004/12/10	SCALE NTS DESIGN UNITS METRIC THIRD ANGLE PROJECTION	TITLE <p style="text-align: center;"><b>2.54MM PITCH DUAL ROW HEADER SINGLE WAFER, T/H</b></p>	
D7		DRAFT WHERE APPLICABLE MUST REMAIN WITHIN DIMENSIONS		MATERIAL NO. <b>SEE TABLE</b>	MOLEX INCORPORATED DOCUMENT NO.    SHEET NO. <b>SD-87914-013</b> 32 OF 46		
SIZE <b>A3</b>		THIS DRAWING CONTAINS INFORMATION THAT IS PROPRIETARY TO MOLEX INCORPORATED AND SHOULD NOT BE USED WITHOUT WRITTEN PERMISSION					

	10		9		8		7		6		5		4		3		2		1	
	PART NO FOR BULK PACKAGING	PART NO. FOR TUBE WITHOUT CAP PACKAGING	PART NO. FOR TUBE WITH CAP PACKAGING	PART NO. FOR TAPE & REEL WITHOUT CAP PACKAGING	PART NO. FOR TAPE & REEL WITH CAP PACKAGING	CKT SIZE	VOID POSITION	PLATING TYPE	DIMENSION											
									A	B	F	M	P							
F	87914-5411	-----	-----	-----	-----	54	----	1	68.58	66.04	10.92	5.84	2.79							
	87914-5421	-----	-----	-----	-----	54	----	1	68.58	66.04	12.25	7.00	2.96							
	87914-5412	-----	-----	-----	-----	54	----	2	68.58	66.04	10.92	5.84	2.79							
	87914-5422	-----	-----	-----	-----	54	----	2	68.58	66.04	12.25	7.00	2.96							
	87914-5413	-----	-----	-----	-----	54	----	3	68.58	66.04	10.92	5.84	2.79							
	87914-5423	-----	-----	-----	-----	54	----	3	68.58	66.04	12.25	7.00	2.96							
E	87914-5414	-----	-----	-----	-----	54	----	4	68.58	66.04	10.92	5.84	2.79							
	87914-5424	-----	-----	-----	-----	54	----	4	68.58	66.04	12.25	7.00	2.96							
	87914-5415	-----	-----	-----	-----	54	----	5	68.58	66.04	10.92	5.84	2.79							
	87914-5425	-----	-----	-----	-----	54	----	5	68.58	66.04	12.25	7.00	2.96							
	87914-5416	-----	-----	-----	-----	54	----	6	68.58	66.04	10.92	5.84	2.79							
	87914-5426	-----	-----	-----	-----	54	----	6	68.58	66.04	12.25	7.00	2.96							
D																				
C																				
B																				

<b>PG8. +879140108</b> EC NO: S2010-0695 DRWN:ATSEE 2010/02/11 CHKD:PTLIM 2004/12/08 APPR:MLONG 2010/06/05	QUALITY SYMBOLS $F_A=0$ $F_G=0$ $F_P=0$	GENERAL TOLERANCES (UNLESS SPECIFIED) <table border="1"> <tr> <td></td> <td>mm</td> <td>INCH</td> </tr> <tr> <td>4 PLACES</td> <td>± ---</td> <td>± ---</td> </tr> <tr> <td>3 PLACES</td> <td>± ---</td> <td>± ---</td> </tr> <tr> <td>2 PLACES</td> <td>± 0.20</td> <td>± ---</td> </tr> <tr> <td>1 PLACE</td> <td>± ---</td> <td>± ---</td> </tr> </table>		mm	INCH	4 PLACES	± ---	± ---	3 PLACES	± ---	± ---	2 PLACES	± 0.20	± ---	1 PLACE	± ---	± ---	DIMENSION STYLE <b>MM ONLY</b>	SCALE <b>NTS</b>	DESIGN UNITS <b>METRIC</b>	<b>THIRD ANGLE PROJECTION</b>
		mm	INCH																		
	4 PLACES	± ---	± ---																		
	3 PLACES	± ---	± ---																		
2 PLACES	± 0.20	± ---																			
1 PLACE	± ---	± ---																			
DESCRIPTION <b>D7</b>	DRAFT WHERE APPLICABLE MUST REMAIN WITHIN DIMENSIONS	DRAWN BY: <b>KCHO</b> DATE: <b>2004/11/05</b>	CHECKED BY: <b>PTLIM</b> DATE: <b>2004/12/08</b>	APPROVED BY: <b>SCLOW</b> DATE: <b>2004/12/10</b>	<b>2.54MM PITCH DUAL ROW HEADER SINGLE WAFER, T/H</b>																
		MATERIAL NO.: <b>SEE TABLE</b>	DOCUMENT NO.: <b>SD-87914-013</b>	<b>MOLEX INCORPORATED</b>		SHEET NO.: <b>33 OF 46</b>															
		THIS DRAWING CONTAINS INFORMATION THAT IS PROPRIETARY TO MOLEX INCORPORATED AND SHOULD NOT BE USED WITHOUT WRITTEN PERMISSION																			

PART NO FOR BULK PACKAGING	PART NO. FOR TUBE WITHOUT CAP PACKAGING	PART NO. FOR TUBE WITH CAP PACKAGING	PART NO. FOR TAPE & REEL WITHOUT CAP PACKAGING	PART NO. FOR TAPE & REEL WITH CAP PACKAGING	CKT SIZE	VOID POSITION	PLATING TYPE	DIMENSION				
								A	B	F	M	P
								F	87914-5611	-----	-----	-----
	87914-5621	-----	-----	-----	56	-----	1	71.12	68.58	12.25	7.00	2.96
	87914-5612	-----	-----	-----	56	-----	2	71.12	68.58	10.92	5.84	2.79
	87914-5622	-----	-----	-----	56	-----	2	71.12	68.58	12.25	7.00	2.96
	87914-5613	-----	-----	-----	56	-----	3	71.12	68.58	10.92	5.84	2.79
	87914-5623	-----	-----	-----	56	-----	3	71.12	68.58	12.25	7.00	2.96
E	87914-5614	-----	-----	-----	56	-----	4	71.12	68.58	10.92	5.84	2.79
	87914-5624	-----	-----	-----	56	-----	4	71.12	68.58	12.25	7.00	2.96
	87914-5615	-----	-----	-----	56	-----	5	71.12	68.58	10.92	5.84	2.79
	87914-5625	-----	-----	-----	56	-----	5	71.12	68.58	12.25	7.00	2.96
	87914-5616	-----	-----	-----	56	-----	6	71.12	68.58	10.92	5.84	2.79
	87914-5626	-----	-----	-----	56	-----	6	71.12	68.58	12.25	7.00	2.96
D												
C												
B												

<b>PG8. +879140108</b> EC NO: S2010-0695 DRWN:ATSEE 2010/02/11 CHKD:PTLIM 2004/12/08 APPR:MLONG 2010/06/05 <b>D7</b>	<b>QUALITY SYMBOLS</b> $F_A=0$ $F_C=0$ $F_P=0$	<b>GENERAL TOLERANCES (UNLESS SPECIFIED)</b> <table border="1"> <tr> <th></th> <th>mm</th> <th>INCH</th> </tr> <tr> <td>4 PLACES</td> <td>± ---</td> <td>± ---</td> </tr> <tr> <td>3 PLACES</td> <td>± ---</td> <td>± ---</td> </tr> <tr> <td>2 PLACES</td> <td>± 0.20</td> <td>± ---</td> </tr> <tr> <td>1 PLACE</td> <td>± ---</td> <td>± ---</td> </tr> </table>		mm	INCH	4 PLACES	± ---	± ---	3 PLACES	± ---	± ---	2 PLACES	± 0.20	± ---	1 PLACE	± ---	± ---	<b>DIMENSION STYLE</b> <b>MM ONLY</b>	<b>SCALE</b> <b>NTS</b>	<b>DESIGN UNITS</b> <b>METRIC</b>	<b>THIRD ANGLE PROJECTION</b>
		mm	INCH																		
	4 PLACES	± ---	± ---																		
	3 PLACES	± ---	± ---																		
	2 PLACES	± 0.20	± ---																		
1 PLACE	± ---	± ---																			
		<b>DRAWN BY</b> KCHO <b>DATE</b> 2004/11/05 <b>CHECKED BY</b> PTLIM <b>DATE</b> 2004/12/08 <b>APPROVED BY</b> SCLOW <b>DATE</b> 2004/12/10	<b>TITLE</b> <b>2.54MM PITCH DUAL ROW HEADER SINGLE WAFER, T/H</b>																		
		<b>ANGULAR ± 3 °</b>	<b>MOLEX INCORPORATED</b>																		
		<b>DRAFT WHERE APPLICABLE MUST REMAIN WITHIN DIMENSIONS</b>	<b>SEE TABLE</b>	<b>DOCUMENT NO. SD-87914-013</b>		<b>SHEET NO. 34 OF 46</b>															
		<b>SIZE A3</b>	<b>THIS DRAWING CONTAINS INFORMATION THAT IS PROPRIETARY TO MOLEX INCORPORATED AND SHOULD NOT BE USED WITHOUT WRITTEN PERMISSION</b>																		

PART NO FOR BULK PACKAGING	PART NO. FOR TUBE WITHOUT CAP PACKAGING	PART NO. FOR TUBE WITH CAP PACKAGING	PART NO. FOR TAPE & REEL WITHOUT CAP PACKAGING	PART NO. FOR TAPE & REEL WITH CAP PACKAGING	CKT SIZE	VOID POSITION	PLATING TYPE	DIMENSION				
								A	B	F	M	P
								F	87914-5811	-----	-----	-----
	87914-5821	-----	-----	-----	58	----	1	73.66	71.12	12.25	7.00	2.96
	87914-5812	-----	-----	-----	58	----	2	73.66	71.12	10.92	5.84	2.79
	87914-5822	-----	-----	-----	58	----	2	73.66	71.12	12.25	7.00	2.96
	87914-5813	-----	-----	-----	58	----	3	73.66	71.12	10.92	5.84	2.79
	87914-5823	-----	-----	-----	58	----	3	73.66	71.12	12.25	7.00	2.96
E	87914-5814	-----	-----	-----	58	----	4	73.66	71.12	10.92	5.84	2.79
	87914-5824	-----	-----	-----	58	----	4	73.66	71.12	12.25	7.00	2.96
	87914-5815	-----	-----	-----	58	----	5	73.66	71.12	10.92	5.84	2.79
	87914-5825	-----	-----	-----	58	----	5	73.66	71.12	12.25	7.00	2.96
	87914-5816	-----	-----	-----	58	----	6	73.66	71.12	10.92	5.84	2.79
	87914-5826	-----	-----	-----	58	----	6	73.66	71.12	12.25	7.00	2.96
D												
C												
B												

<b>PG8, +879140108</b> EC NO: S2010-0695 DRWN:ATSEE 2010/02/11 CHKD:PTLIM 2004/12/08 APPR:MLONG 2010/06/05	DESCRIPTION REV	QUALITY SYMBOLS	GENERAL TOLERANCES (UNLESS SPECIFIED)	DIMENSION STYLE <b>MM ONLY</b>	SCALE <b>NTS</b>	DESIGN UNITS <b>METRIC</b>	THIRD ANGLE PROJECTION																																
		$F_A=0$ $F_G=0$ $F_P=0$	<table border="1"> <tr><th></th><th>mm</th><th>INCH</th></tr> <tr><td>4 PLACES</td><td>± ---</td><td>± ---</td></tr> <tr><td>3 PLACES</td><td>± ---</td><td>± ---</td></tr> <tr><td>2 PLACES</td><td>± 0.20</td><td>± ---</td></tr> <tr><td>1 PLACE</td><td>± ---</td><td>± ---</td></tr> </table>		mm	INCH	4 PLACES	± ---	± ---	3 PLACES	± ---	± ---	2 PLACES	± 0.20	± ---	1 PLACE	± ---	± ---	<table border="1"> <tr><th>DRAWN BY</th><th>DATE</th><th>TITLE</th></tr> <tr><td>KCHO</td><td>2004/11/05</td><td rowspan="3"><b>2.54MM PITCH DUAL ROW HEADER SINGLE WAFER, T/H</b></td></tr> <tr><th>CHECKED BY</th><th>DATE</th></tr> <tr><td>PTLIM</td><td>2004/12/08</td></tr> <tr><th>APPROVED BY</th><th>DATE</th><td><b>MOLEX INCORPORATED</b></td></tr> <tr><td>SCLOW</td><td>2004/12/10</td><td></td></tr> </table>	DRAWN BY	DATE	TITLE	KCHO	2004/11/05	<b>2.54MM PITCH DUAL ROW HEADER SINGLE WAFER, T/H</b>	CHECKED BY	DATE	PTLIM	2004/12/08	APPROVED BY	DATE	<b>MOLEX INCORPORATED</b>	SCLOW	2004/12/10					
			mm	INCH																																			
		4 PLACES	± ---	± ---																																			
3 PLACES	± ---	± ---																																					
2 PLACES	± 0.20	± ---																																					
1 PLACE	± ---	± ---																																					
DRAWN BY	DATE	TITLE																																					
KCHO	2004/11/05	<b>2.54MM PITCH DUAL ROW HEADER SINGLE WAFER, T/H</b>																																					
CHECKED BY	DATE																																						
PTLIM	2004/12/08																																						
APPROVED BY	DATE	<b>MOLEX INCORPORATED</b>																																					
SCLOW	2004/12/10																																						
	ANGULAR ± 3 °	DRAFT WHERE APPLICABLE MUST REMAIN WITHIN DIMENSIONS	SEE TABLE	MATERIAL NO.	DOCUMENT NO.	SHEET NO.																																	
	D7			THIS DRAWING CONTAINS INFORMATION THAT IS PROPRIETARY TO MOLEX INCORPORATED AND SHOULD NOT BE USED WITHOUT WRITTEN PERMISSION																																			

F	PART NO FOR BULK PACKAGING	PART NO. FOR TUBE WITHOUT CAP PACKAGING	PART NO. FOR TUBE WITH CAP PACKAGING	PART NO. FOR TAPE & REEL WITHOUT CAP PACKAGING	PART NO. FOR TAPE & REEL WITH CAP PACKAGING	CKT SIZE	VOID POSITION	PLATING TYPE	DIMENSION				
									A	B	F	M	P
									87914-6011	-----	-----	-----	-----
87914-6021	-----	-----	-----	-----	60	----	1	76.20	73.66	12.25	7.00	2.96	
87914-6012	-----	-----	-----	-----	60	----	2	76.20	73.66	10.92	5.84	2.79	
87914-6022	-----	-----	-----	-----	60	----	2	76.20	73.66	12.25	7.00	2.96	
87914-6013	-----	-----	-----	-----	60	----	3	76.20	73.66	10.92	5.84	2.79	
87914-6023	-----	-----	-----	-----	60	----	3	76.20	73.66	12.25	7.00	2.96	
87914-6014	-----	-----	-----	-----	60	----	4	76.20	73.66	10.92	5.84	2.79	
87914-6024	-----	-----	-----	-----	60	----	4	76.20	73.66	12.25	7.00	2.96	
87914-6015	-----	-----	-----	-----	60	----	5	76.20	73.66	10.92	5.84	2.79	
87914-6025	-----	-----	-----	-----	60	----	5	76.20	73.66	12.25	7.00	2.96	
87914-6016	-----	-----	-----	-----	60	----	6	76.20	73.66	10.92	5.84	2.79	
87914-6026	-----	-----	-----	-----	60	----	6	76.20	73.66	12.25	7.00	2.96	
D													
C													
B													

<b>PG8. +879140108</b> EC NO: S2010-0695 DRWN:ATSEE 2010/02/11 CHKD:PTLIM 2004/12/08 APPR:MLONG 2010/06/05 REV <b>D7</b>	QUALITY SYMBOLS	GENERAL TOLERANCES (UNLESS SPECIFIED)	DIMENSION STYLE	SCALE	DESIGN UNITS	THIRD ANGLE PROJECTION	
	$F_A=0$ $F_G=0$ $F_P=0$	mm      INCH 4 PLACES ± --- ± --- 3 PLACES ± --- ± --- 2 PLACES ± 0.20 ± --- 1 PLACE ± --- ± --- ANGULAR ± 3 °	MM ONLY	NTS	METRIC		
			DRAWN BY	DATE	TITLE		
			KCHO	2004/11/05	2.54MM PITCH DUAL ROW HEADER SINGLE WAFER, T/H		
			CHECKED BY	DATE	MOLEX INCORPORATED		
		PTLIM	2004/12/08				
		APPROVED BY	DATE				
		SCLOW	2004/12/10				
		MATERIAL NO.	DOCUMENT NO.				
		SEE TABLE		SD-87914-013			
		SIZE	THIS DRAWING CONTAINS INFORMATION THAT IS PROPRIETARY TO MOLEX INCORPORATED AND SHOULD NOT BE USED WITHOUT WRITTEN PERMISSION				
		A3	36 OF 46				

PART NO FOR BULK PACKAGING	PART NO. FOR TUBE WITHOUT CAP PACKAGING	PART NO. FOR TUBE WITH CAP PACKAGING	PART NO. FOR TAPE & REEL WITHOUT CAP PACKAGING	PART NO. FOR TAPE & REEL WITH CAP PACKAGING	CKT SIZE	VOID POSITION	PLATING TYPE	DIMENSION				
								A	B	F	M	P
								F	87914-6211	-----	-----	-----
	87914-6221	-----	-----	-----	62	----	1	78.74	76.20	12.25	7.00	2.96
	87914-6212	-----	-----	-----	62	----	2	78.74	76.20	10.92	5.84	2.79
	87914-6222	-----	-----	-----	62	----	2	78.74	76.20	12.25	7.00	2.96
	87914-6213	-----	-----	-----	62	----	3	78.74	76.20	10.92	5.84	2.79
	87914-6223	-----	-----	-----	62	----	3	78.74	76.20	12.25	7.00	2.96
E	87914-6214	-----	-----	-----	62	----	4	78.74	76.20	10.92	5.84	2.79
	87914-6224	-----	-----	-----	62	----	4	78.74	76.20	12.25	7.00	2.96
	87914-6215	-----	-----	-----	62	----	5	78.74	76.20	10.92	5.84	2.79
	87914-6225	-----	-----	-----	62	----	5	78.74	76.20	12.25	7.00	2.96
	87914-6216	-----	-----	-----	62	----	6	78.74	76.20	10.92	5.84	2.79
	87914-6226	-----	-----	-----	62	----	6	78.74	76.20	12.25	7.00	2.96
D												
C												
B												

<b>PG8. +879140108</b> EC NO: S2010-0695 DRWN:ATSEE 2010/02/11 CHKD:PTLIM 2004/12/08 APPR:MLONG 2010/06/05 <b>D7</b>	<b>QUALITY SYMBOLS</b> $\nabla_A=0$ $\nabla_C=0$ $\nabla_P=0$	<b>GENERAL TOLERANCES (UNLESS SPECIFIED)</b>		<b>DIMENSION STYLE</b> <b>MM ONLY</b>	<b>SCALE</b> <b>NTS</b>	<b>DESIGN UNITS</b> <b>METRIC</b>	<b>THIRD ANGLE PROJECTION</b>		
		4 PLACES $\pm$ --- $\pm$ --- 3 PLACES $\pm$ --- $\pm$ --- 2 PLACES $\pm$ 0.20 $\pm$ --- 1 PLACE $\pm$ --- $\pm$ --- ANGULAR $\pm$ 3 °	mm    INCH $\pm$ --- $\pm$ --- $\pm$ --- $\pm$ --- $\pm$ 0.20 $\pm$ --- $\pm$ --- $\pm$ ---	<b>DRAWN BY</b> KCHO <b>CHECKED BY</b> PTLIM <b>APPROVED BY</b> SCLOW	<b>DATE</b> 2004/11/05 2004/12/08 2004/12/10	<b>TITLE</b> <b>2.54MM PITCH DUAL ROW HEADER SINGLE WAFER, T/H</b> <b>MOLEX INCORPORATED</b>	<b>MATERIAL NO.</b> <b>SEE TABLE</b>	<b>DOCUMENT NO.</b> <b>SD-87914-013</b>	<b>SHEET NO.</b> 37 OF 46
		<b>DRAFT WHERE APPLICABLE MUST REMAIN WITHIN DIMENSIONS</b>							<b>THIS DRAWING CONTAINS INFORMATION THAT IS PROPRIETARY TO MOLEX INCORPORATED AND SHOULD NOT BE USED WITHOUT WRITTEN PERMISSION</b>

10		9		8		7		6		5		4		3		2		1	
PART NO FOR BULK PACKAGING	PART NO. FOR TUBE WITHOUT CAP PACKAGING	PART NO. FOR TUBE WITH CAP PACKAGING	PART NO. FOR TAPE & REEL WITHOUT CAP PACKAGING	PART NO. FOR TAPE & REEL WITH CAP PACKAGING	CKT SIZE	VOID POSITION	PLATING TYPE	DIMENSION					3	2	1				
								A	B	F	M	P							
87914-6411	-----	-----	-----	-----	64	----	1	81.28	78.74	10.92	5.84	2.79							
87914-6421	-----	-----	-----	-----	64	----	1	81.28	78.74	12.25	7.00	2.96							
87914-6412	-----	-----	-----	-----	64	----	2	81.28	78.74	10.92	5.84	2.79							
87914-6422	-----	-----	-----	-----	64	----	2	81.28	78.74	12.25	7.00	2.96							
87914-6413	-----	-----	-----	-----	64	----	3	81.28	78.74	10.92	5.84	2.79							
87914-6423	-----	-----	-----	-----	64	----	3	81.28	78.74	12.25	7.00	2.96							
87914-6414	-----	-----	-----	-----	64	----	4	81.28	78.74	10.92	5.84	2.79							
87914-6424	-----	-----	-----	-----	64	----	4	81.28	78.74	12.25	7.00	2.96							
87914-6415	-----	-----	-----	-----	64	----	5	81.28	78.74	10.92	5.84	2.79							
87914-6425	-----	-----	-----	-----	64	----	5	81.28	78.74	12.25	7.00	2.96							
87914-6416	-----	-----	-----	-----	64	----	6	81.28	78.74	10.92	5.84	2.79							
87914-6426	-----	-----	-----	-----	64	----	6	81.28	78.74	12.25	7.00	2.96							

<b>PG8. +879140108</b> EC NO: S2010-0695 DRWN:ATSEE 2010/02/11 CHKD:PTLIM 2004/12/08 APPR:MLONG 2010/06/05	QUALITY SYMBOLS $\nabla_A=0$ $\nabla_C=0$ $\nabla_P=0$	GENERAL TOLERANCES (UNLESS SPECIFIED) mm      INCH		DIMENSION STYLE <b>MM ONLY</b>		SCALE NTS	DESIGN UNITS METRIC	THIRD ANGLE PROJECTION		
		4 PLACES ± --- ± ---	DRAWN BY KCHO	DATE 2004/11/05	<b>2.54MM PITCH          DUAL ROW HEADER          SINGLE WAFER, T/H</b>  <b>MOLEX INCORPORATED</b>					
		3 PLACES ± --- ± ---	CHECKED BY PTLIM	DATE 2004/12/08						
		2 PLACES ± 0.20 ± ---	APPROVED BY SCLOW	DATE 2004/12/10						
1 PLACE ± --- ± ---	MATERIAL NO. <b>SEE TABLE</b>		DOCUMENT NO. <b>SD-87914-013</b>	SHEET NO. <b>38 OF 46</b>						
DRAFT WHERE APPLICABLE MUST REMAIN WITHIN DIMENSIONS				SIZE <b>A3</b>		THIS DRAWING CONTAINS INFORMATION THAT IS PROPRIETARY TO MOLEX INCORPORATED AND SHOULD NOT BE USED WITHOUT WRITTEN PERMISSION				



	10	9	8	7	6	5	4	3	2	1			
	PART NO FOR BULK PACKAGING	PART NO. FOR TUBE WITHOUT CAP PACKAGING	PART NO. FOR TUBE WITH CAP PACKAGING	PART NO. FOR TAPE & REEL WITHOUT CAP PACKAGING	PART NO. FOR TAPE & REEL WITH CAP PACKAGING	CKT SIZE	VOID POSITION	PLATING TYPE	DIMENSION				
	A	B	F	M	P								
F	87914-6611	-----	-----	-----	-----	66	----	1	83.82	81.28	10.92	5.84	2.79
	87914-6621	-----	-----	-----	-----	66	----	1	83.82	81.28	12.25	7.00	2.96
	87914-6612	-----	-----	-----	-----	66	----	2	83.82	81.28	10.92	5.84	2.79
	87914-6622	-----	-----	-----	-----	66	----	2	83.82	81.28	12.25	7.00	2.96
	87914-6613	-----	-----	-----	-----	66	----	3	83.82	81.28	10.92	5.84	2.79
	87914-6623	-----	-----	-----	-----	66	----	3	83.82	81.28	12.25	7.00	2.96
E	87914-6614	-----	-----	-----	-----	66	----	4	83.82	81.28	10.92	5.84	2.79
	87914-6624	-----	-----	-----	-----	66	----	4	83.82	81.28	12.25	7.00	2.96
	87914-6615	-----	-----	-----	-----	66	----	5	83.82	81.28	10.92	5.84	2.79
	87914-6625	-----	-----	-----	-----	66	----	5	83.82	81.28	12.25	7.00	2.96
	87914-6616	-----	-----	-----	-----	66	----	6	83.82	81.28	10.92	5.84	2.79
	87914-6626	-----	-----	-----	-----	66	----	6	83.82	81.28	12.25	7.00	2.96
D													
C													
B													

<b>PG8. +879140108</b> EC NO: S2010-0695 DRWN:ATSEE 2010/02/11 CHKD:PTLIM 2004/12/08 APPR:MLONG 2010/06/05	QUALITY SYMBOLS	GENERAL TOLERANCES (UNLESS SPECIFIED)	DIMENSION STYLE	SCALE	DESIGN UNITS	THIRD ANGLE PROJECTION	
	$F_A=0$	mm INCH	MM ONLY	NTS	METRIC		
	$F_G=0$	4 PLACES ± --- ± ---	DRAWN BY DATE	TITLE <b>2.54MM PITCH DUAL ROW HEADER SINGLE WAFER, T/H</b> <b>MOLEX INCORPORATED</b>			
	$F_P=0$	3 PLACES ± --- ± ---	CHECKED BY DATE				
	2 PLACES ± 0.20 ± ---	APPROVED BY DATE	MATERIAL NO. DOCUMENT NO. SHEET NO. <b>SEE TABLE SD-87914-013 39 OF 46</b>				
	1 PLACE ± --- ± ---	SCLOW 2004/12/10	THIS DRAWING CONTAINS INFORMATION THAT IS PROPRIETARY TO MOLEX INCORPORATED AND SHOULD NOT BE USED WITHOUT WRITTEN PERMISSION				



	10	9	8	7	6	5	4	3	2	1				
	PART NO FOR BULK PACKAGING	PART NO. FOR TUBE WITHOUT CAP PACKAGING	PART NO. FOR TUBE WITH CAP PACKAGING	PART NO. FOR TAPE & REEL WITHOUT CAP PACKAGING	PART NO. FOR TAPE & REEL WITH CAP PACKAGING	CKT SIZE	VOID POSITION	PLATING TYPE	DIMENSION					
									A	B	F	M	P	
F	87914-7011	-----	-----	-----	-----	70	----	1	88.90	86.36	10.92	5.84	2.79	F
	87914-7021	-----	-----	-----	-----	70	----	1	88.90	86.36	12.25	7.00	2.96	
	87914-7012	-----	-----	-----	-----	70	----	2	88.90	86.36	10.92	5.84	2.79	
	87914-7022	-----	-----	-----	-----	70	----	2	88.90	86.36	12.25	7.00	2.96	
	87914-7013	-----	-----	-----	-----	70	----	3	88.90	86.36	10.92	5.84	2.79	
	87914-7023	-----	-----	-----	-----	70	----	3	88.90	86.36	12.25	7.00	2.96	
E	87914-7014	-----	-----	-----	-----	70	----	4	88.90	86.36	10.92	5.84	2.79	E
	87914-7024	-----	-----	-----	-----	70	----	4	88.90	86.36	12.25	7.00	2.96	
	87914-7015	-----	-----	-----	-----	70	----	5	88.90	86.36	10.92	5.84	2.79	
	87914-7025	-----	-----	-----	-----	70	----	5	88.90	86.36	12.25	7.00	2.96	
	87914-7016	-----	-----	-----	-----	70	----	6	88.90	86.36	10.92	5.84	2.79	
	87914-7026	-----	-----	-----	-----	70	----	6	88.90	86.36	12.25	7.00	2.96	
D														D

<b>PG8. +879140108</b> EC NO: S2010-0695 DRWN:ATSEE 2010/02/11 CHKD:PTLIM 2004/12/08 APPR:MLONG 2010/06/05	QUALITY SYMBOLS	GENERAL TOLERANCES (UNLESS SPECIFIED)	DIMENSION STYLE <b>MM ONLY</b>	SCALE NTS	DESIGN UNITS METRIC	THIRD ANGLE PROJECTION
	$F_A = 0$ $F_G = 0$ $F_P = 0$			DRAWN BY	DATE	TITLE
		4 PLACES	$\pm$ ---	$\pm$ ---	KCHO	2004/11/05
	3 PLACES	$\pm$ ---	$\pm$ ---	CHECKED BY	DATE	
2 PLACES	$\pm 0.20$	$\pm$ ---	PTLIM	2004/12/08	<b>MOLEX INCORPORATED</b>	
1 PLACE	$\pm$ ---	$\pm$ ---	APPROVED BY	DATE		
	ANGULAR $\pm 3^\circ$		SLOW	2004/12/10	MATERIAL NO.	DOCUMENT NO.
	DRAFT WHERE APPLICABLE MUST REMAIN WITHIN DIMENSIONS		SEE TABLE			SD-87914-013
SIZE <b>A3</b>	THIS DRAWING CONTAINS INFORMATION THAT IS PROPRIETARY TO MOLEX INCORPORATED AND SHOULD NOT BE USED WITHOUT WRITTEN PERMISSION					

PART NO FOR BULK PACKAGING	PART NO. FOR TUBE WITHOUT CAP PACKAGING	PART NO. FOR TUBE WITH CAP PACKAGING	PART NO. FOR TAPE & REEL WITHOUT CAP PACKAGING	PART NO. FOR TAPE & REEL WITH CAP PACKAGING	CKT SIZE	VOID POSITION	PLATING TYPE	DIMENSION				
								A	B	F	M	P
								87914-7211	-----	-----	-----	-----
87914-7221	-----	-----	-----	-----	72	----	1	91.44	88.90	12.25	7.00	2.96
87914-7212	-----	-----	-----	-----	72	----	2	91.44	88.90	10.92	5.84	2.79
87914-7222	-----	-----	-----	-----	72	----	2	91.44	88.90	12.25	7.00	2.96
87914-7213	-----	-----	-----	-----	72	----	3	91.44	88.90	10.92	5.84	2.79
87914-7223	-----	-----	-----	-----	72	----	3	91.44	88.90	12.25	7.00	2.96
87914-7214	-----	-----	-----	-----	72	----	4	91.44	88.90	10.92	5.84	2.79
87914-7224	-----	-----	-----	-----	72	----	4	91.44	88.90	12.25	7.00	2.96
87914-7215	-----	-----	-----	-----	72	----	5	91.44	88.90	10.92	5.84	2.79
87914-7225	-----	-----	-----	-----	72	----	5	91.44	88.90	12.25	7.00	2.96
87914-7216	-----	-----	-----	-----	72	----	6	91.44	88.90	10.92	5.84	2.79
87914-7226	-----	-----	-----	-----	72	----	6	91.44	88.90	12.25	7.00	2.96

<b>PG8. +879140108</b> EC NO: S2010-0695 DRWN:ATSEE 2010/02/11 CHKD:PTLIM 2004/12/08 APPR:MLONG 2010/06/05	QUALITY SYMBOLS $F_A=0$ $F_G=0$ $F_P=0$	GENERAL TOLERANCES (UNLESS SPECIFIED) <table border="1"> <tr> <th></th> <th>mm</th> <th>INCH</th> </tr> <tr> <td>4 PLACES</td> <td>± ---</td> <td>± ---</td> </tr> <tr> <td>3 PLACES</td> <td>± ---</td> <td>± ---</td> </tr> <tr> <td>2 PLACES</td> <td>± 0.20</td> <td>± ---</td> </tr> <tr> <td>1 PLACE</td> <td>± ---</td> <td>± ---</td> </tr> </table>		mm	INCH	4 PLACES	± ---	± ---	3 PLACES	± ---	± ---	2 PLACES	± 0.20	± ---	1 PLACE	± ---	± ---	DIMENSION STYLE <b>MM ONLY</b>	SCALE <b>NTS</b>	DESIGN UNITS <b>METRIC</b>	THIRD ANGLE PROJECTION
		mm	INCH																		
	4 PLACES	± ---	± ---																		
	3 PLACES	± ---	± ---																		
2 PLACES	± 0.20	± ---																			
1 PLACE	± ---	± ---																			
DESCRIPTION <b>D7</b>	DRAWN BY KCHO	DATE 2004/11/05	TITLE <b>2.54MM PITCH DUAL ROW HEADER SINGLE WAFER, T/H</b>	CHECKED BY PTLIM	DATE 2004/12/08	APPROVED BY SCLOW	DATE 2004/12/10														
MATERIAL NO. <b>SEE TABLE</b>	DOCUMENT NO. <b>SD-87914-013</b>	SHEET NO. <b>42 OF 46</b>	<b>MOLEX INCORPORATED</b>	DRAFT WHERE APPLICABLE MUST REMAIN WITHIN DIMENSIONS			THIS DRAWING CONTAINS INFORMATION THAT IS PROPRIETARY TO MOLEX INCORPORATED AND SHOULD NOT BE USED WITHOUT WRITTEN PERMISSION														
SIZE <b>A3</b>	DRAFT WHERE APPLICABLE MUST REMAIN WITHIN DIMENSIONS																				

	10	9	8	7	6	5	4	3	2	1				
	PART NO FOR BULK PACKAGING	PART NO. FOR TUBE WITHOUT CAP PACKAGING	PART NO. FOR TUBE WITH CAP PACKAGING	PART NO. FOR TAPE & REEL WITHOUT CAP PACKAGING	PART NO. FOR TAPE & REEL WITH CAP PACKAGING	CKT SIZE	VOID POSITION	PLATING TYPE	DIMENSION					
								A	B	F	M	P		
F	87914-7411	-----	-----	-----	-----	74	----	1	93.98	91.44	10.92	5.84	2.79	F
	87914-7421	-----	-----	-----	-----	74	----	1	93.98	91.44	12.25	7.00	2.96	
	87914-7412	-----	-----	-----	-----	74	----	2	93.98	91.44	10.92	5.84	2.79	
	87914-7422	-----	-----	-----	-----	74	----	2	93.98	91.44	12.25	7.00	2.96	
	87914-7413	-----	-----	-----	-----	74	----	3	93.98	91.44	10.92	5.84	2.79	
	87914-7423	-----	-----	-----	-----	74	----	3	93.98	91.44	12.25	7.00	2.96	
E	87914-7414	-----	-----	-----	-----	74	----	4	93.98	91.44	10.92	5.84	2.79	E
	87914-7424	-----	-----	-----	-----	74	----	4	93.98	91.44	12.25	7.00	2.96	
	87914-7415	-----	-----	-----	-----	74	----	5	93.98	91.44	10.92	5.84	2.79	
	87914-7425	-----	-----	-----	-----	74	----	5	93.98	91.44	12.25	7.00	2.96	
	87914-7416	-----	-----	-----	-----	74	----	6	93.98	91.44	10.92	5.84	2.79	
	87914-7426	-----	-----	-----	-----	74	----	6	93.98	91.44	12.25	7.00	2.96	
D														D
C														C
B														B

<b>PG8, +879140108</b> EC NO: S2010-0695 DRWN:ATSEE 2010/02/11 CHKD:PTLIM 2004/12/08 APPR:MLONG 2010/06/05	QUALITY SYMBOLS $F_A=0$ $F_G=0$ $F_P=0$	GENERAL TOLERANCES (UNLESS SPECIFIED) <table border="1"> <tr> <th></th> <th>mm</th> <th>INCH</th> </tr> <tr> <td>4 PLACES</td> <td>± ---</td> <td>± ---</td> </tr> <tr> <td>3 PLACES</td> <td>± ---</td> <td>± ---</td> </tr> <tr> <td>2 PLACES</td> <td>± 0.20</td> <td>± ---</td> </tr> <tr> <td>1 PLACE</td> <td>± ---</td> <td>± ---</td> </tr> </table>		mm	INCH	4 PLACES	± ---	± ---	3 PLACES	± ---	± ---	2 PLACES	± 0.20	± ---	1 PLACE	± ---	± ---	DIMENSION STYLE <b>MM ONLY</b> DRAWN BY: KCHO DATE: 2004/11/05 CHECKED BY: PTLIM DATE: 2004/12/08 APPROVED BY: SCLOW DATE: 2004/12/10	SCALE <b>NTS</b> DESIGN UNITS <b>METRIC</b> 	<b>2.54MM PITCH DUAL ROW HEADER SINGLE WAFER, T/H</b>  <b>MOLEX INCORPORATED</b>
				mm	INCH															
			4 PLACES	± ---	± ---															
3 PLACES	± ---	± ---																		
2 PLACES	± 0.20	± ---																		
1 PLACE	± ---	± ---																		
DRAFT WHERE APPLICABLE MUST REMAIN WITHIN DIMENSIONS	MATERIAL NO. <b>SEE TABLE</b>	DOCUMENT NO. <b>SD-87914-013</b>	SHEET NO. <b>43 OF 46</b>																	
				THIS DRAWING CONTAINS INFORMATION THAT IS PROPRIETARY TO MOLEX INCORPORATED AND SHOULD NOT BE USED WITHOUT WRITTEN PERMISSION																

PART NO FOR BULK PACKAGING	PART NO. FOR TUBE WITHOUT CAP PACKAGING	PART NO. FOR TUBE WITH CAP PACKAGING	PART NO. FOR TAPE & REEL WITHOUT CAP PACKAGING	PART NO. FOR TAPE & REEL WITH CAP PACKAGING	CKT SIZE	VOID POSITION	PLATING TYPE	DIMENSION				
								A	B	C	D	E
								F	87914-7611	-----	-----	-----
	87914-7621	-----	-----	-----	76	-----	1	96.52	93.98	12.25	7.00	2.96
	87914-7612	-----	-----	-----	76	-----	2	96.52	93.98	10.92	5.84	2.79
	87914-7622	-----	-----	-----	76	-----	2	96.52	93.98	12.25	7.00	2.96
	87914-7613	-----	-----	-----	76	-----	3	96.52	93.98	10.92	5.84	2.79
	87914-7623	-----	-----	-----	76	-----	3	96.52	93.98	12.25	7.00	2.96
E	87914-7614	-----	-----	-----	76	-----	4	96.52	93.98	10.92	5.84	2.79
	87914-7624	-----	-----	-----	76	-----	4	96.52	93.98	12.25	7.00	2.96
	87914-7615	-----	-----	-----	76	-----	5	96.52	93.98	10.92	5.84	2.79
	87914-7625	-----	-----	-----	76	-----	5	96.52	93.98	12.25	7.00	2.96
	87914-7616	-----	-----	-----	76	-----	6	96.52	93.98	10.92	5.84	2.79
	87914-7626	-----	-----	-----	76	-----	6	96.52	93.98	12.25	7.00	2.96
D												
C												
B												

PG8. +879140108 EC NO: S2010-0695 DRWN:ATSEE 2010/02/11 CHKD:PTLIM 2004/12/08 APPR:MLONG 2010/06/05 REV D7	QUALITY SYMBOLS	GENERAL TOLERANCES (UNLESS SPECIFIED)	DIMENSION STYLE MM ONLY	SCALE NTS	DESIGN UNITS METRIC	THIRD ANGLE PROJECTION
	$F_A=0$	4 PLACES	mm INCH	DRAWN BY DATE	TITLE	
	$F_C=0$	3 PLACES	$\pm$ --- $\pm$ ---	KCHO 2004/11/05	2.54MM PITCH DUAL ROW HEADER SINGLE WAFER, T/H	
	$F_B=0$	2 PLACES	$\pm$ 0.20 $\pm$ ---	CHECKED BY DATE	MOLEX INCORPORATED	
	1 PLACE	$\pm$ --- $\pm$ ---	PTLIM 2004/12/08	SD-87914-013		
		ANGULAR $\pm$ 3 °	APPROVED BY DATE	SHEET NO.		
			SCLW 2004/12/10	44 OF 46		
		DRAFT WHERE APPLICABLE MUST REMAIN WITHIN DIMENSIONS	MATERIAL NO.	DOCUMENT NO.		
			SEE TABLE	SD-87914-013		
			SIZE A3	THIS DRAWING CONTAINS INFORMATION THAT IS PROPRIETARY TO MOLEX INCORPORATED AND SHOULD NOT BE USED WITHOUT WRITTEN PERMISSION		

	10	9	8	7	6	5	4	3	2	1			
	PART NO FOR BULK PACKAGING	PART NO. FOR TUBE WITHOUT CAP PACKAGING	PART NO. FOR TUBE WITH CAP PACKAGING	PART NO. FOR TAPE & REEL WITHOUT CAP PACKAGING	PART NO. FOR TAPE & REEL WITH CAP PACKAGING	CKT SIZE	VOID POSITION	PLATING TYPE	DIMENSION				
									A	B	F	M	P
F	87914-7811	-----	-----	-----	-----	78	----	1	99.06	96.52	10.92	5.84	2.79
	87914-7821	-----	-----	-----	-----	78	----	1	99.06	96.52	12.25	7.00	2.96
	87914-7812	-----	-----	-----	-----	78	----	2	99.06	96.52	10.92	5.84	2.79
	87914-7822	-----	-----	-----	-----	78	----	2	99.06	96.52	12.25	7.00	2.96
	87914-7813	-----	-----	-----	-----	78	----	3	99.06	96.52	10.92	5.84	2.79
	87914-7823	-----	-----	-----	-----	78	----	3	99.06	96.52	12.25	7.00	2.96
E	87914-7814	-----	-----	-----	-----	78	----	4	99.06	96.52	10.92	5.84	2.79
	87914-7824	-----	-----	-----	-----	78	----	4	99.06	96.52	12.25	7.00	2.96
	87914-7815	-----	-----	-----	-----	78	----	5	99.06	96.52	10.92	5.84	2.79
	87914-7825	-----	-----	-----	-----	78	----	5	99.06	96.52	12.25	7.00	2.96
	87914-7816	-----	-----	-----	-----	78	----	6	99.06	96.52	10.92	5.84	2.79
	87914-7826	-----	-----	-----	-----	78	----	6	99.06	96.52	12.25	7.00	2.96
D													
C													
B													

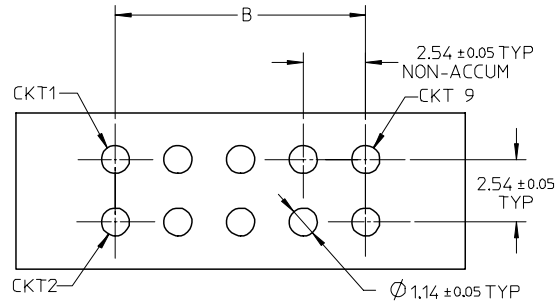
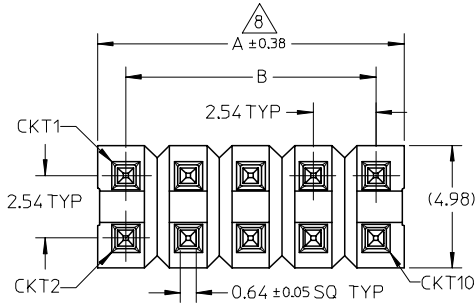
A	PG8. +879140108 EC NO: S2010-0695 DRWN:ATSEE 2010/02/11 CHKD:PTLIM 2004/12/08 APPR:MLONG 2010/06/05	QUALITY SYMBOLS	GENERAL TOLERANCES (UNLESS SPECIFIED)	DIMENSION STYLE	SCALE	DESIGN UNITS	THIRD ANGLE PROJECTION																				
		$F_A=0$ $F_G=0$ $F_P=0$	<table border="1"> <tr> <th colspan="2">mm</th> <th colspan="2">INCH</th> </tr> <tr> <td>4 PLACES</td> <td><math>\pm</math>---</td> <td><math>\pm</math>---</td> <td></td> </tr> <tr> <td>3 PLACES</td> <td><math>\pm</math>---</td> <td><math>\pm</math>---</td> <td></td> </tr> <tr> <td>2 PLACES</td> <td><math>\pm</math>0.20</td> <td><math>\pm</math>---</td> <td></td> </tr> <tr> <td>1 PLACE</td> <td><math>\pm</math>---</td> <td><math>\pm</math>---</td> <td></td> </tr> </table>	mm		INCH		4 PLACES	$\pm$ ---	$\pm$ ---		3 PLACES	$\pm$ ---	$\pm$ ---		2 PLACES	$\pm$ 0.20	$\pm$ ---		1 PLACE	$\pm$ ---	$\pm$ ---		MM ONLY	NTS	METRIC	
		mm		INCH																							
		4 PLACES	$\pm$ ---	$\pm$ ---																							
3 PLACES	$\pm$ ---	$\pm$ ---																									
2 PLACES	$\pm$ 0.20	$\pm$ ---																									
1 PLACE	$\pm$ ---	$\pm$ ---																									
DESCRIPTION	<table border="1"> <tr> <td>DRAWN BY</td> <td>DATE</td> <td>TITLE</td> </tr> <tr> <td>KCHO</td> <td>2004/11/05</td> <td rowspan="3">2.54MM PITCH DUAL ROW HEADER SINGLE WAFER, T/H</td> </tr> <tr> <td>CHECKED BY</td> <td>DATE</td> </tr> <tr> <td>PTLIM</td> <td>2004/12/08</td> </tr> <tr> <td>APPROVED BY</td> <td>DATE</td> <td>MATERIAL NO.</td> </tr> <tr> <td>SCLOW</td> <td>2004/12/10</td> <td>SD-87914-013</td> </tr> </table>	DRAWN BY	DATE	TITLE	KCHO	2004/11/05	2.54MM PITCH DUAL ROW HEADER SINGLE WAFER, T/H	CHECKED BY	DATE	PTLIM	2004/12/08	APPROVED BY	DATE	MATERIAL NO.	SCLOW	2004/12/10	SD-87914-013	<table border="1"> <tr> <td>DOCUMENT NO.</td> <td>SHEET NO.</td> </tr> <tr> <td>SEE TABLE</td> <td>45 OF 46</td> </tr> </table>	DOCUMENT NO.	SHEET NO.	SEE TABLE	45 OF 46					
DRAWN BY	DATE	TITLE																									
KCHO	2004/11/05	2.54MM PITCH DUAL ROW HEADER SINGLE WAFER, T/H																									
CHECKED BY	DATE																										
PTLIM	2004/12/08																										
APPROVED BY	DATE	MATERIAL NO.																									
SCLOW	2004/12/10	SD-87914-013																									
DOCUMENT NO.	SHEET NO.																										
SEE TABLE	45 OF 46																										
REV	D7	DRAFT WHERE APPLICABLE MUST REMAIN WITHIN DIMENSIONS	<table border="1"> <tr> <td>SIZE</td> <td>THIS DRAWING CONTAINS INFORMATION THAT IS PROPRIETARY TO MOLEX INCORPORATED AND SHOULD NOT BE USED WITHOUT WRITTEN PERMISSION</td> </tr> <tr> <td>A3</td> <td></td> </tr> </table>	SIZE	THIS DRAWING CONTAINS INFORMATION THAT IS PROPRIETARY TO MOLEX INCORPORATED AND SHOULD NOT BE USED WITHOUT WRITTEN PERMISSION	A3																					
SIZE	THIS DRAWING CONTAINS INFORMATION THAT IS PROPRIETARY TO MOLEX INCORPORATED AND SHOULD NOT BE USED WITHOUT WRITTEN PERMISSION																										
A3																											

	10	9	8	7	6	5	4	3	2	1			
	PART NO FOR BULK PACKAGING	PART NO. FOR TUBE WITHOUT CAP PACKAGING	PART NO. FOR TUBE WITH CAP PACKAGING	PART NO. FOR TAPE & REEL WITHOUT CAP PACKAGING	PART NO. FOR TAPE & REEL WITH CAP PACKAGING	CKT SIZE	VOID POSITION	PLATING TYPE	DIMENSION				
									A	B	F	M	P
F	87914-8011	-----	-----	-----	-----	80	-----	1	101.60	99.06	10.92	5.84	2.79
	87914-8021	-----	-----	-----	-----	80	-----	1	101.60	99.06	12.25	7.00	2.96
	87914-8012	-----	-----	-----	-----	80	-----	2	101.60	99.06	10.92	5.84	2.79
	87914-8022	-----	-----	-----	-----	80	-----	2	101.60	99.06	12.25	7.00	2.96
	87914-8013	-----	-----	-----	-----	80	-----	3	101.60	99.06	10.92	5.84	2.79
	87914-8023	-----	-----	-----	-----	80	-----	3	101.60	99.06	12.25	7.00	2.96
E	87914-8014	-----	-----	-----	-----	80	-----	4	101.60	99.06	10.92	5.84	2.79
	87914-8024	-----	-----	-----	-----	80	-----	4	101.60	99.06	12.25	7.00	2.96
	87914-8015	-----	-----	-----	-----	80	-----	5	101.60	99.06	10.92	5.84	2.79
	87914-8025	-----	-----	-----	-----	80	-----	5	101.60	99.06	12.25	7.00	2.96
	87914-8016	-----	-----	-----	-----	80	-----	6	101.60	99.06	10.92	5.84	2.79
	87914-8026	-----	-----	-----	-----	80	-----	6	101.60	99.06	12.25	7.00	2.96
D													
C													
B													

<b>PG8. +879140108</b> EC NO: S2010-0695 DRWN:ATSEE 2010/02/11 CHKD:PTLIM 2004/12/08 APPR:MLONG 2010/06/05 <b>D7</b>	QUALITY SYMBOLS	GENERAL TOLERANCES (UNLESS SPECIFIED)	DIMENSION STYLE	SCALE	DESIGN UNITS	THIRD ANGLE PROJECTION	
	$F_A = 0$ $F_G = 0$ $F_P = 0$		MM ONLY	NTS	METRIC		
			mm INCH	DRAWN BY DATE	TITLE		
			4 PLACES ± --- ± ---	KCHO 2004/11/05	2.54MM PITCH DUAL ROW HEADER SINGLE WAFER, T/H		
		3 PLACES ± --- ± ---	CHECKED BY DATE	MOLEX INCORPORATED			
		2 PLACES ± 0.20 ± ---	PTLIM 2004/12/08	DOCUMENT NO.			
		1 PLACE ± --- ± ---	APPROVED BY DATE	SHEET NO.			
		ANGULAR ± 3 °	SCLOW 2004/12/10	SD-87914-013			
		DRAFT WHERE APPLICABLE MUST REMAIN WITHIN DIMENSIONS	MATERIAL NO.	46 OF 46			
			SEE TABLE	THIS DRAWING CONTAINS INFORMATION THAT IS PROPRIETARY TO MOLEX INCORPORATED AND SHOULD NOT BE USED WITHOUT WRITTEN PERMISSION			
			SIZE A3				

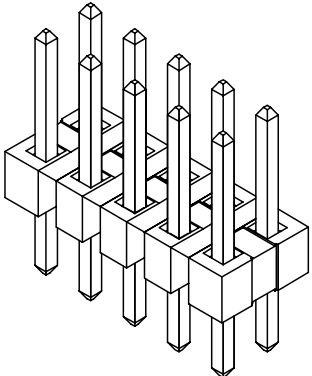
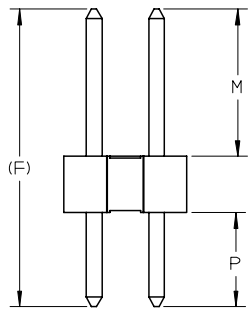
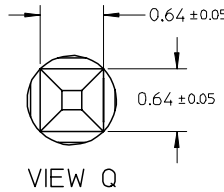
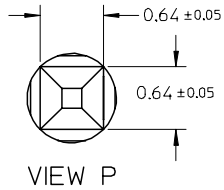
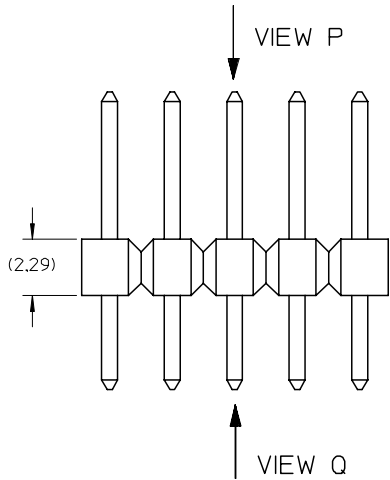


10 9 8 7 6 5 4 3 2 1



RECOMMENDED PCB LAYOUT

- NOTES:
- MATERIAL:  
HSG: LCP, GLASS-FILLED, UL94V-0,  
COLOR: BLACK  
PIN: 0.64MM SQ PIN, COPPER ALLOY
  - PLATING TYPE:  
(1) : 0.381 μm MIN. GOLD PLATE ON CONTACT AND  
1.905 μm MIN. TIN ON SOLDERTAIL OVER  
1.270 μm MIN. NICKEL OVERALL.  
(2) : 0.762 μm MIN. GOLD PLATE ON CONTACT AND  
1.905 μm MIN. TIN ON SOLDERTAIL OVER  
1.270 μm MIN. NICKEL OVERALL.  
(3) : 2.540 μm MIN. TIN IN SELECTED AREA OVER  
1.270 μm MIN. NICKEL OVERALL.
  - THE ABOVE 10 CKT IS FOR ILLUSTRATION PURPOSE ONLY.
  - FOR PACKAGING OPTION PLEASE REFER TO THE TABLE.
  - RECOMMENDED PCB THICKNESS 1.60MM.
  - PRODUCT SPECIFICATION: PS-87920-019
  - WAFER TO BE FLAT WITHIN 0.003mm/mm
  - IRREGULAR CIRCUIT CUTOFF WITHIN BREAKAWAY SECTION IS PERMISSIBLE. CUTTING OR CHIPPING OF THE MAIN BODY IS NOT ACCEPTABLE.
  - PARTS ARE NOT STACKABLE ON 2.54 CENTER
  - PACKAGING SPECIFICATION:  
TRAY: PK-89990-489  
BULK: PK-89990-491



<b>EWB# 1010 &amp; 1021</b> EC NO: S2007-0182 DRWNS:SKL IM01 2006/09/11 CHKD:CWLAM 2006/09/12 APPR:KWLEE 2006/09/13	QUALITY SYMBOLS ▽=0 ▽C=0	GENERAL TOLERANCES (UNLESS SPECIFIED) <table border="1"> <thead> <tr> <th></th> <th>mm</th> <th>INCH</th> </tr> </thead> <tbody> <tr> <td>4 PLACES</td> <td>± ---</td> <td>± ---</td> </tr> <tr> <td>3 PLACES</td> <td>± ---</td> <td>± ---</td> </tr> <tr> <td>2 PLACES</td> <td>± 0.2</td> <td>± ---</td> </tr> <tr> <td>1 PLACE</td> <td>± ---</td> <td>± ---</td> </tr> </tbody> </table> ANGULAR ± 3 °		mm	INCH	4 PLACES	± ---	± ---	3 PLACES	± ---	± ---	2 PLACES	± 0.2	± ---	1 PLACE	± ---	± ---	DIMENSION STYLE MM ONLY	SCALE NTS	DESIGN UNITS METRIC	THIRD ANGLE PROJECTION
		mm	INCH																		
	4 PLACES	± ---	± ---																		
	3 PLACES	± ---	± ---																		
2 PLACES	± 0.2	± ---																			
1 PLACE	± ---	± ---																			
DESCRIPTION	DRAFT WHERE APPLICABLE MUST REMAIN WITHIN DIMENSIONS	DRAWN BY SKL IM01 DATE 2006/08/21	CHECKED BY CWLAM DATE 2006/09/04	APPROVED BY KWLEE DATE 2006/09/04	CUSTOM HEADER C-GRID, SINGLE WAFER HDR, THROU HOLE, VERTICAL, LF																
REV	MATERIAL NO. SEE TABLE	DOCUMENT NO. SD-87914-059	MOLEX INCORPORATED		SHEET NO. 1 OF 9																
	SIZE A3	THIS DRAWING CONTAINS INFORMATION THAT IS PROPRIETARY TO MOLEX INCORPORATED AND SHOULD NOT BE USED WITHOUT WRITTEN PERMISSION																			

9 8 7 6 5 4 3 2 1

PART NO FOR TRAY PACKAGING	PART NO FOR BULK PACKAGING	CKT SIZE	PLATING TYPE	DIMENSION				
				A	B	F	MATING END	SOLDER TAIL
							M	P
87914-0401	-----	4	1	5.08	2.54	13.21	8.13	2.79
87914-0402	-----	4	2	5.08	2.54	13.21	8.13	2.79
87914-0403	-----	4	3	5.08	2.54	13.21	8.13	2.79
87914-0601	-----	6	1	7.62	5.08	13.21	8.13	2.79
87914-0602	-----	6	2	7.62	5.08	13.21	8.13	2.79
87914-0603	-----	6	3	7.62	5.08	13.21	8.13	2.79
87914-0801	-----	8	1	10.16	7.62	13.21	8.13	2.79
87914-0802	-----	8	2	10.16	7.62	13.21	8.13	2.79
87914-0803	-----	8	3	10.16	7.62	13.21	8.13	2.79
87914-1001	-----	10	1	12.70	10.16	13.21	8.13	2.79
87914-1002	-----	10	2	12.70	10.16	13.21	8.13	2.79
87914-1003	-----	10	3	12.70	10.16	13.21	8.13	2.79

PART NO FOR TRAY PACKAGING	PART NO FOR BULK PACKAGING	CKT SIZE	PLATING TYPE	DIMENSION				
				A	B	F	MATING END	SOLDER TAIL
							M	P
87914-0204	-----	2	1	2.54	---	11.11	6.10	2.72
87914-0205	-----	2	2	2.54	---	11.11	6.10	2.72
87914-0206	-----	2	3	2.54	---	11.11	6.10	2.72
87914-0404	-----	4	1	5.08	2.54	11.11	6.10	2.72
87914-0405	-----	4	2	5.08	2.54	11.11	6.10	2.72
87914-0406	-----	4	3	5.08	2.54	11.11	6.10	2.72
87914-0604	-----	6	1	7.62	5.08	11.11	6.10	2.72
87914-0605	-----	6	2	7.62	5.08	11.11	6.10	2.72
87914-0606	-----	6	3	7.62	5.08	11.11	6.10	2.72
87914-0804	-----	8	1	10.16	7.62	11.11	6.10	2.72
87914-0805	-----	8	2	10.16	7.62	11.11	6.10	2.72
87914-0806	-----	8	3	10.16	7.62	11.11	6.10	2.72
87914-1004	-----	10	1	12.70	10.16	11.11	6.10	2.72
87914-1005	-----	10	2	12.70	10.16	11.11	6.10	2.72
87914-1006	-----	10	3	12.70	10.16	11.11	6.10	2.72

EWR# 1010 & 1021  
 EC NO: S2007-0182  
 DRWNS:SKL IM01 2006/09/11  
 CHKD:CWLAM 2006/09/12  
 APPR:KWLEE 2006/09/13

QUALITY SYMBOLS  
 ▼=0  
 ▽=0

GENERAL TOLERANCES (UNLESS SPECIFIED)  

	mm	INCH
4 PLACES	± ---	± ---
3 PLACES	± ---	± ---
2 PLACES	± 0.2	± ---
1 PLACE	± ---	± ---
ANGULAR ± 3 °		

 DRAFT WHERE APPLICABLE  
 MUST REMAIN WITHIN DIMENSIONS

DIMENSION STYLE  
 MM ONLY  
 DRAWN BY SKL IM01 DATE 2006/08/21  
 CHECKED BY CWLAM DATE 2006/09/04  
 APPROVED BY KWLEE DATE 2006/09/04  
 MATERIAL NO. SEE TABLE  
 SIZE A3

SCALE NTS  
 DESIGN UNITS METRIC  
 THIRD ANGLE PROJECTION  
 TITLE  
 CUSTOM HEADER  
 C-GRID, SINGLE WAFER HDR,  
 THROU HOLE, VERTICAL, LF  
 MOLEX INCORPORATED  
 DOCUMENT NO. SD-87914-059  
 SHEET NO. 2 OF 9  
 THIS DRAWING CONTAINS INFORMATION THAT IS PROPRIETARY TO MOLEX INCORPORATED AND SHOULD NOT BE USED WITHOUT WRITTEN PERMISSION

10 9 8 7 6 5 4 3 2 1

	PART NO FOR TRAY PACKAGING	PART NO FOR BULK PACKAGING	CKT SIZE	PLATING TYPE	DIMENSION				
					A	B	F	MATING END	SOLDER TAIL
								M	P
F	87914-1201	-----	12	1	15.24	12.70	13.21	8.13	2.79
	87914-1202	-----	12	2	15.24	12.70	13.21	8.13	2.79
	87914-1203	-----	12	3	15.24	12.70	13.21	8.13	2.79
E	87914-1401	-----	14	1	17.78	15.24	13.21	8.13	2.79
	87914-1402	-----	14	2	17.78	15.24	13.21	8.13	2.79
	87914-1403	-----	14	3	17.78	15.24	13.21	8.13	2.79
	87914-1601	-----	16	1	20.32	17.78	13.21	8.13	2.79
	87914-1602	-----	16	2	20.32	17.78	13.21	8.13	2.79
	87914-1603	-----	16	3	20.32	17.78	13.21	8.13	2.79
D	87914-1801	-----	18	1	22.86	20.32	13.21	8.13	2.79
	87914-1802	-----	18	2	22.86	20.32	13.21	8.13	2.79
	87914-1803	-----	18	3	22.86	20.32	13.21	8.13	2.79
	87914-2001	-----	20	1	25.40	22.86	13.21	8.13	2.79
	87914-2002	-----	20	2	25.40	22.86	13.21	8.13	2.79
C	87914-2003	-----	20	3	25.40	22.86	13.21	8.13	2.79

	PART NO FOR TRAY PACKAGING	PART NO FOR BULK PACKAGING	CKT SIZE	PLATING TYPE	DIMENSION				
					A	B	F	MATING END	SOLDER TAIL
								M	P
F	87914-1204	-----	12	1	15.24	12.70	11.11	6.10	2.72
	87914-1205	-----	12	2	15.24	12.70	11.11	6.10	2.72
	87914-1206	-----	12	3	15.24	12.70	11.11	6.10	2.72
E	87914-1404	-----	14	1	17.78	15.24	11.11	6.10	2.72
	87914-1405	-----	14	2	17.78	15.24	11.11	6.10	2.72
	87914-1406	-----	14	3	17.78	15.24	11.11	6.10	2.72
	87914-1604	-----	16	1	20.32	17.78	11.11	6.10	2.72
	87914-1605	-----	16	2	20.32	17.78	11.11	6.10	2.72
	87914-1606	-----	16	3	20.32	17.78	11.11	6.10	2.72
D	87914-1804	-----	18	1	22.86	20.32	11.11	6.10	2.72
	87914-1805	-----	18	2	22.86	20.32	11.11	6.10	2.72
	87914-1806	-----	18	3	22.86	20.32	11.11	6.10	2.72
	87914-2004	-----	20	1	25.40	22.86	11.11	6.10	2.72
	87914-2005	-----	20	2	25.40	22.86	11.11	6.10	2.72
	87914-2006	-----	20	3	25.40	22.86	11.11	6.10	2.72

B B

A	EWB# 1010 & 1021	2006/09/11
	EC NO: S2007-0182	2006/09/12
	DRWNS:SKL IM01	2006/09/13
	CHKD:CWLAM	
	APPR:KWLEE	
	REV	DESCRIPTION
	A	

QUALITY SYMBOLS	GENERAL TOLERANCES (UNLESS SPECIFIED)	DIMENSION STYLE	SCALE	DESIGN UNITS	THIRD ANGLE PROJECTION
▽=0	mm INCH	MM ONLY	NTS	METRIC	
▽=0	4 PLACES ± --- ± ---	DRAWN BY DATE	TITLE		
	3 PLACES ± --- ± ---	SKL IM01 2006/08/21	CUSTOM HEADER		
	2 PLACES ± 0.2 ± ---	CHECKED BY DATE	C-GRID, SINGLE WAFER HDR,		
	1 PLACE ± --- ± ---	CWLAM 2006/09/04	THROU HOLE, VERTICAL, LF		
	ANGULAR ± 3 °	APPROVED BY DATE	MOLEX INCORPORATED		
		KWLEE 2006/09/04	MOLEX		
	DRAFT WHERE APPLICABLE MUST REMAIN WITHIN DIMENSIONS	MATERIAL NO.	DOCUMENT NO.	SHEET NO.	
		SEE TABLE	SD-87914-059	3 OF 9	
		SIZE A3	THIS DRAWING CONTAINS INFORMATION THAT IS PROPRIETARY TO MOLEX INCORPORATED AND SHOULD NOT BE USED WITHOUT WRITTEN PERMISSION		

id\_frame\_A3\_P\_AM\_T Rev. D 2004/06/28 9 8 7 6 5 4 3 2 1

F	PART NO FOR TRAY PACKAGING	PART NO FOR BULK PACKAGING	CKT SIZE	PLATING TYPE	DIMENSION					PART NO FOR TRAY PACKAGING	PART NO FOR BULK PACKAGING	CKT SIZE	PLATING TYPE	DIMENSION					F
					A	B	F	M	P					A	B	F	M	P	
	87914-2201	-----	22	1	27.94	25.40	13.21	8.13	2.79	87914-2204	-----	22	1	27.94	25.40	11.11	6.10	2.72	
	87914-2202	-----	22	2	27.94	25.40	13.21	8.13	2.79	87914-2205	-----	22	2	27.94	25.40	11.11	6.10	2.72	
	87914-2203	-----	22	3	27.94	25.40	13.21	8.13	2.79	87914-2206	-----	22	3	27.94	25.40	11.11	6.10	2.72	
	87914-2401	-----	24	1	30.48	27.94	13.21	8.13	2.79	87914-2404	-----	24	1	30.48	27.94	11.11	6.10	2.72	
	87914-2402	-----	24	2	30.48	27.94	13.21	8.13	2.79	87914-2405	-----	24	2	30.48	27.94	11.11	6.10	2.72	
E	87914-2403	-----	24	3	30.48	27.94	13.21	8.13	2.79	87914-2406	-----	24	3	30.48	27.94	11.11	6.10	2.72	E
	87914-2601	-----	26	1	33.02	30.48	13.21	8.13	2.79	87914-2604	-----	26	1	33.02	30.48	11.11	6.10	2.72	
	87914-2602	-----	26	2	33.02	30.48	13.21	8.13	2.79	87914-2605	-----	26	2	33.02	30.48	11.11	6.10	2.72	
	87914-2603	-----	26	3	33.02	30.48	13.21	8.13	2.79	87914-2606	-----	26	3	33.02	30.48	11.11	6.10	2.72	
	87914-2801	-----	28	1	35.56	33.02	13.21	8.13	2.79	87914-2804	-----	28	1	35.56	33.02	11.11	6.10	2.72	
	87914-2802	-----	28	2	35.56	33.02	13.21	8.13	2.79	87914-2805	-----	28	2	35.56	33.02	11.11	6.10	2.72	
	87914-2803	-----	28	3	35.56	33.02	13.21	8.13	2.79	87914-2806	-----	28	3	35.56	33.02	11.11	6.10	2.72	
	87914-3001	-----	30	1	38.10	35.56	13.21	8.13	2.79	87914-3004	-----	30	1	38.10	35.56	11.11	6.10	2.72	
	87914-3002	-----	30	2	38.10	35.56	13.21	8.13	2.79	87914-3005	-----	30	2	38.10	35.56	11.11	6.10	2.72	
C	87914-3003	-----	30	3	38.10	35.56	13.21	8.13	2.79	87914-3006	-----	30	3	38.10	35.56	11.11	6.10	2.72	C

B																				B
---	--	--	--	--	--	--	--	--	--	--	--	--	--	--	--	--	--	--	--	---

A	EWR# 1010 & 1021 EC NO: S2007-0182 DRWNS:SKL IM01 2006/09/11 CHKD:CWLAM 2006/09/12 APPR:KWLEE 2006/09/13	QUALITY SYMBOLS	$\nabla = 0$ $\triangle = 0$	GENERAL TOLERANCES (UNLESS SPECIFIED) <table border="1"> <tr> <th></th> <th>mm</th> <th>INCH</th> </tr> <tr> <td>4 PLACES</td> <td><math>\pm .005</math></td> <td><math>\pm .0004</math></td> </tr> <tr> <td>3 PLACES</td> <td><math>\pm .005</math></td> <td><math>\pm .0004</math></td> </tr> <tr> <td>2 PLACES</td> <td><math>\pm 0.2</math></td> <td><math>\pm .008</math></td> </tr> <tr> <td>1 PLACE</td> <td><math>\pm .005</math></td> <td><math>\pm .0004</math></td> </tr> </table>		mm	INCH	4 PLACES	$\pm .005$	$\pm .0004$	3 PLACES	$\pm .005$	$\pm .0004$	2 PLACES	$\pm 0.2$	$\pm .008$	1 PLACE	$\pm .005$	$\pm .0004$	DIMENSION STYLE MM ONLY	SCALE NTS	DESIGN UNITS METRIC	THIRD ANGLE PROJECTION	DRAWN BY SKL IM01	DATE 2006/08/21	TITLE CUSTOM HEADER C-GRID, SINGLE WAFER HDR, THROU HOLE, VERTICAL, LF	APPROVED BY KWLEE	DATE 2006/09/04	MOLEX INCORPORATED	MATERIAL NO.	DOCUMENT NO. SD-87914-059	SHEET NO. 4 OF 9
			mm	INCH																												
		4 PLACES	$\pm .005$	$\pm .0004$																												
		3 PLACES	$\pm .005$	$\pm .0004$																												
2 PLACES	$\pm 0.2$	$\pm .008$																														
1 PLACE	$\pm .005$	$\pm .0004$																														
DRAFT WHERE APPLICABLE MUST REMAIN WITHIN DIMENSIONS	SEE TABLE	SIZE A3	THIS DRAWING CONTAINS INFORMATION THAT IS PROPRIETARY TO MOLEX INCORPORATED AND SHOULD NOT BE USED WITHOUT WRITTEN PERMISSION																													

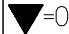
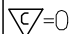
F	10		9		8		7		6		5		4		3		2		1		F							
	PART NO FOR TRAY PACKAGING	PART NO FOR BULK PACKAGING	CKT SIZE	PLATING TYPE	DIMENSION					PART NO FOR TRAY PACKAGING	PART NO FOR BULK PACKAGING	CKT SIZE	PLATING TYPE	DIMENSION					PART NO FOR TRAY PACKAGING	PART NO FOR BULK PACKAGING		CKT SIZE	PLATING TYPE	DIMENSION				
					A	B	F	M	P					A	B	F	M	P						A	B	F	M	P
	87914-3201	-----	32	1	40.64	38.10	13.21	8.13	2.79		87914-3204	-----	32	1	40.64	38.10	11.11	6.10	2.72									
	87914-3202	-----	32	2	40.64	38.10	13.21	8.13	2.79		87914-3205	-----	32	2	40.64	38.10	11.11	6.10	2.72									
	87914-3203	-----	32	3	40.64	38.10	13.21	8.13	2.79		87914-3206	-----	32	3	40.64	38.10	11.11	6.10	2.72									
	87914-3401	-----	34	1	43.18	40.64	13.21	8.13	2.79		87914-3404	-----	34	1	43.18	40.64	11.11	6.10	2.72									
	87914-3402	-----	34	2	43.18	40.64	13.21	8.13	2.79		87914-3405	-----	34	2	43.18	40.64	11.11	6.10	2.72									
E	87914-3403	-----	34	3	43.18	40.64	13.21	8.13	2.79		87914-3406	-----	34	3	43.18	40.64	11.11	6.10	2.72									
	87914-3601	-----	36	1	45.72	43.18	13.21	8.13	2.79		87914-3604	-----	36	1	45.72	43.18	11.11	6.10	2.72									
	87914-3602	-----	36	2	45.72	43.18	13.21	8.13	2.79		87914-3605	-----	36	2	45.72	43.18	11.11	6.10	2.72									
	87914-3603	-----	36	3	45.72	43.18	13.21	8.13	2.79		87914-3606	-----	36	3	45.72	43.18	11.11	6.10	2.72									
	87914-3801	-----	38	1	48.26	45.72	13.21	8.13	2.79		87914-3804	-----	38	1	48.26	45.72	11.11	6.10	2.72									
	87914-3802	-----	38	2	48.26	45.72	13.21	8.13	2.79		87914-3805	-----	38	2	48.26	45.72	11.11	6.10	2.72									
	87914-3803	-----	38	3	48.26	45.72	13.21	8.13	2.79		87914-3806	-----	38	3	48.26	45.72	11.11	6.10	2.72									
	87914-4001	-----	40	1	50.80	48.26	13.21	8.13	2.79		87914-4004	-----	40	1	50.80	48.26	11.11	6.10	2.72									
	87914-4002	-----	40	2	50.80	48.26	13.21	8.13	2.79		87914-4005	-----	40	2	50.80	48.26	11.11	6.10	2.72									
C	87914-4003	-----	40	3	50.80	48.26	13.21	8.13	2.79		87914-4006	-----	40	3	50.80	48.26	11.11	6.10	2.72									

B																					B
---	--	--	--	--	--	--	--	--	--	--	--	--	--	--	--	--	--	--	--	--	---

A	EWR# 1010 & 1021 EC NO: S2007-0182 DRWNS:SKL IM01 2006/09/11 CHKD:CWLAM 2006/09/12 APPR:KWLEE 2006/09/13	QUALITY SYMBOLS ▼=0 ▽=0	GENERAL TOLERANCES (UNLESS SPECIFIED) <table border="1"> <tr> <th></th> <th>mm</th> <th>INCH</th> </tr> <tr> <td>4 PLACES</td> <td>± ---</td> <td>± ---</td> </tr> <tr> <td>3 PLACES</td> <td>± ---</td> <td>± ---</td> </tr> <tr> <td>2 PLACES</td> <td>± 0.2</td> <td>± ---</td> </tr> <tr> <td>1 PLACE</td> <td>± ---</td> <td>± ---</td> </tr> <tr> <td colspan="3">ANGULAR ± 3 °</td> </tr> </table>			mm	INCH	4 PLACES	± ---	± ---	3 PLACES	± ---	± ---	2 PLACES	± 0.2	± ---	1 PLACE	± ---	± ---	ANGULAR ± 3 °			DIMENSION STYLE <b>MM ONLY</b>	SCALE NTS	DESIGN UNITS METRIC	THIRD ANGLE PROJECTION	DRAWN BY SKL IM01	DATE 2006/08/21	TITLE <b>CUSTOM HEADER          C-GRID, SINGLE WAFER HDR,          THROU HOLE, VERTICAL, LF</b>	CHECKED BY CWLAM	DATE 2006/09/04	APPROVED BY KWLEE	DATE 2006/09/04	MATERIAL NO.	DOCUMENT NO. <b>SD-87914-059</b>	SHEET NO. 5 OF 9
				mm	INCH																															
4 PLACES	± ---	± ---																																		
3 PLACES	± ---	± ---																																		
2 PLACES	± 0.2	± ---																																		
1 PLACE	± ---	± ---																																		
ANGULAR ± 3 °																																				
DRAFT WHERE APPLICABLE MUST REMAIN WITHIN DIMENSIONS	SEE TABLE	THIS DRAWING CONTAINS INFORMATION THAT IS PROPRIETARY TO MOLEX INCORPORATED AND SHOULD NOT BE USED WITHOUT WRITTEN PERMISSION																																		

	10		9		8		7		6		5		4		3		2		1	
	PART NO FOR TRAY PACKAGING	PART NO FOR BULK PACKAGING	CKT SIZE	PLATING TYPE	DIMENSION					PART NO FOR TRAY PACKAGING	PART NO FOR BULK PACKAGING	CKT SIZE	PLATING TYPE	DIMENSION						
					A	B	F	M	P					A	B	F	M	P		
F	87914-4201	-----	42	1	53.34	50.80	13.21	8.13	2.79	87914-4204	-----	42	1	53.34	50.80	11.11	6.10	2.72		
	87914-4202	-----	42	2	53.34	50.80	13.21	8.13	2.79	87914-4205	-----	42	2	53.34	50.80	11.11	6.10	2.72		
	87914-4203	-----	42	3	53.34	50.80	13.21	8.13	2.79	87914-4206	-----	42	3	53.34	50.80	11.11	6.10	2.72		
	87914-4401	-----	44	1	55.88	53.34	13.21	8.13	2.79	87914-4404	-----	44	1	55.88	53.34	11.11	6.10	2.72		
	87914-4402	-----	44	2	55.88	53.34	13.21	8.13	2.79	87914-4405	-----	44	2	55.88	53.34	11.11	6.10	2.72		
E	87914-4403	-----	44	3	55.88	53.34	13.21	8.13	2.79	87914-4406	-----	44	3	55.88	53.34	11.11	6.10	2.72		
	87914-4601	-----	46	1	58.42	55.88	13.21	8.13	2.79	87914-4604	-----	46	1	58.42	55.88	11.11	6.10	2.72		
	87914-4602	-----	46	2	58.42	55.88	13.21	8.13	2.79	87914-4605	-----	46	2	58.42	55.88	11.11	6.10	2.72		
	87914-4603	-----	46	3	58.42	55.88	13.21	8.13	2.79	87914-4606	-----	46	3	58.42	55.88	11.11	6.10	2.72		
D	87914-4801	-----	48	1	60.96	58.42	13.21	8.13	2.79	87914-4804	-----	48	1	60.96	58.42	11.11	6.10	2.72		
	87914-4802	-----	48	2	60.96	58.42	13.21	8.13	2.79	87914-4805	-----	48	2	60.96	58.42	11.11	6.10	2.72		
	87914-4803	-----	48	3	60.96	58.42	13.21	8.13	2.79	87914-4806	-----	48	3	60.96	58.42	11.11	6.10	2.72		
	87914-5001	-----	50	1	63.50	60.96	13.21	8.13	2.79	87914-5004	-----	50	1	63.50	60.96	11.11	6.10	2.72		
	87914-5002	-----	50	2	63.50	60.96	13.21	8.13	2.79	87914-5005	-----	50	2	63.50	60.96	11.11	6.10	2.72		
C	87914-5003	-----	50	3	63.50	60.96	13.21	8.13	2.79	87914-5006	-----	50	3	63.50	60.96	11.11	6.10	2.72		

B

<b>EWR# 1010 &amp; 1021</b> EC NO: S2007-0182 DRWNS:SKL M01 2006/09/11 CHKD:CWLAM 2006/09/12 APPR:KWLEE 2006/09/13	QUALITY SYMBOLS  = 0  = 0	GENERAL TOLERANCES (UNLESS SPECIFIED)	DIMENSION STYLE <b>MM ONLY</b>	SCALE NTS	DESIGN UNITS METRIC	THIRD ANGLE PROJECTION		
		4 PLACES ± --- ± --- 3 PLACES ± --- ± --- 2 PLACES ± 0.2 ± --- 1 PLACE ± --- ± ---	DIMENSION STYLE mm INCH	DRAWN BY SKL M01	DATE 2006/08/21	TITLE <b>CUSTOM HEADER          C-GRID, SINGLE WAFER HDR,          THROU HOLE, VERTICAL, LF</b>		
		ANGULAR ± 3 °	APPROVED BY KWLEE	DATE 2006/09/04	MOLEX INCORPORATED			
		DRAFT WHERE APPLICABLE MUST REMAIN WITHIN DIMENSIONS	MATERIAL NO. SEE TABLE	DOCUMENT NO. SD-87914-059	SHEET NO. 6 OF 9			

F	10		9		8		7		6		5		4		3		2		1	
	PART NO FOR TRAY PACKAGING	PART NO FOR BULK PACKAGING	CKT SIZE	PLATING TYPE	DIMENSION					PART NO FOR TRAY PACKAGING	PART NO FOR BULK PACKAGING	CKT SIZE	PLATING TYPE	DIMENSION						
					A	B	F	M	P					A	B	F	M	P		
	-----	87914-5201	52	1	66.04	63.50	13.21	8.13	2.79	-----	87914-5204	52	1	66.04	63.50	11.11	6.10	2.72		
	-----	87914-5202	52	2	66.04	63.50	13.21	8.13	2.79	-----	87914-5205	52	2	66.04	63.50	11.11	6.10	2.72		
	-----	87914-5203	52	3	66.04	63.50	13.21	8.13	2.79	-----	87914-5206	52	3	66.04	63.50	11.11	6.10	2.72		
	-----	87914-5401	54	1	68.58	66.04	13.21	8.13	2.79	-----	87914-5404	54	1	68.58	66.04	11.11	6.10	2.72		
	-----	87914-5402	54	2	68.58	66.04	13.21	8.13	2.79	-----	87914-5405	54	2	68.58	66.04	11.11	6.10	2.72		
	-----	87914-5403	54	3	68.58	66.04	13.21	8.13	2.79	-----	87914-5406	54	3	68.58	66.04	11.11	6.10	2.72		
	-----	87914-5601	56	1	71.12	68.58	13.21	8.13	2.79	-----	87914-5604	56	1	71.12	68.58	11.11	6.10	2.72		
	-----	87914-5602	56	2	71.12	68.58	13.21	8.13	2.79	-----	87914-5605	56	2	71.12	68.58	11.11	6.10	2.72		
	-----	87914-5603	56	3	71.12	68.58	13.21	8.13	2.79	-----	87914-5606	56	3	71.12	68.58	11.11	6.10	2.72		
	-----	87914-5801	58	1	73.66	71.12	13.21	8.13	2.79	-----	87914-5804	58	1	73.66	71.12	11.11	6.10	2.72		
	-----	87914-5802	58	2	73.66	71.12	13.21	8.13	2.79	-----	87914-5805	58	2	73.66	71.12	11.11	6.10	2.72		
	-----	87914-5803	58	3	73.66	71.12	13.21	8.13	2.79	-----	87914-5806	58	3	73.66	71.12	11.11	6.10	2.72		
	-----	87914-6001	60	1	76.20	73.66	13.21	8.13	2.79	-----	87914-6004	60	1	76.20	73.66	11.11	6.10	2.72		
	-----	87914-6002	60	2	76.20	73.66	13.21	8.13	2.79	-----	87914-6005	60	2	76.20	73.66	11.11	6.10	2.72		
	-----	87914-6003	60	3	76.20	73.66	13.21	8.13	2.79	-----	87914-6006	60	3	76.20	73.66	11.11	6.10	2.72		

B																			
---	--	--	--	--	--	--	--	--	--	--	--	--	--	--	--	--	--	--	--

A	EWR# 1010 & 1021 EC NO: S2007-0182 DRWNS:SKL IM01 2006/09/11 CHKD:CWLAM 2006/09/12 APPR:KWLEE 2006/09/13	QUALITY SYMBOLS =0 =0	GENERAL TOLERANCES (UNLESS SPECIFIED) <table border="1"> <tr> <th></th> <th>mm</th> <th>INCH</th> </tr> <tr> <td>4 PLACES</td> <td>± .005</td> <td>± .0004</td> </tr> <tr> <td>3 PLACES</td> <td>± .005</td> <td>± .0004</td> </tr> <tr> <td>2 PLACES</td> <td>± 0.2</td> <td>± .008</td> </tr> <tr> <td>1 PLACE</td> <td>± .005</td> <td>± .0004</td> </tr> </table>		mm	INCH	4 PLACES	± .005	± .0004	3 PLACES	± .005	± .0004	2 PLACES	± 0.2	± .008	1 PLACE	± .005	± .0004	DIMENSION STYLE MM ONLY	SCALE NTS	DESIGN UNITS METRIC	THIRD ANGLE PROJECTION	DRAWN BY SKL IM01	DATE 2006/08/21	TITLE CUSTOM HEADER C-GRID, SINGLE WAFER HDR, THROU HOLE, VERTICAL, LF	CHECKED BY CWLAM	DATE 2006/09/04	APPROVED BY KWLEE	DATE 2006/09/04	MOLEX INCORPORATED	MATERIAL NO.	DOCUMENT NO. SD-87914-059	SHEET NO. 7 OF 9
			mm	INCH																													
		4 PLACES	± .005	± .0004																													
		3 PLACES	± .005	± .0004																													
2 PLACES	± 0.2	± .008																															
1 PLACE	± .005	± .0004																															
DRAFT WHERE APPLICABLE MUST REMAIN WITHIN DIMENSIONS	SEE TABLE	THIS DRAWING CONTAINS INFORMATION THAT IS PROPRIETARY TO MOLEX INCORPORATED AND SHOULD NOT BE USED WITHOUT WRITTEN PERMISSION																															
SIZE A3																																	

F	10		9		8		7		6		5		4		3		2		1	
	PART NO FOR TRAY PACKAGING	PART NO FOR BULK PACKAGING	CKT SIZE	PLATING TYPE	DIMENSION					PART NO FOR TRAY PACKAGING	PART NO FOR BULK PACKAGING	CKT SIZE	PLATING TYPE	DIMENSION						
					A	B	F	M	P					A	B	F	M	P		
	-----	87914-6201	62	1	78.74	76.20	13.21	8.13	2.79	-----	87914-6204	62	1	78.74	76.20	11.11	6.10	2.72		
	-----	87914-6202	62	2	78.74	76.20	13.21	8.13	2.79	-----	87914-6205	62	2	78.74	76.20	11.11	6.10	2.72		
	-----	87914-6203	62	3	78.74	76.20	13.21	8.13	2.79	-----	87914-6206	62	3	78.74	76.20	11.11	6.10	2.72		
	-----	87914-6401	64	1	81.28	78.74	13.21	8.13	2.79	-----	87914-6404	64	1	81.28	78.74	11.11	6.10	2.72		
	-----	87914-6402	64	2	81.28	78.74	13.21	8.13	2.79	-----	87914-6405	64	2	81.28	78.74	11.11	6.10	2.72		
	-----	87914-6403	64	3	81.28	78.74	13.21	8.13	2.79	-----	87914-6406	64	3	81.28	78.74	11.11	6.10	2.72		
	-----	87914-6601	66	1	83.82	81.28	13.21	8.13	2.79	-----	87914-6604	66	1	83.82	81.28	11.11	6.10	2.72		
	-----	87914-6602	66	2	83.82	81.28	13.21	8.13	2.79	-----	87914-6605	66	2	83.82	81.28	11.11	6.10	2.72		
	-----	87914-6603	66	3	83.82	81.28	13.21	8.13	2.79	-----	87914-6606	66	3	83.82	81.28	11.11	6.10	2.72		
	-----	87914-6801	68	1	86.36	83.82	13.21	8.13	2.79	-----	87914-6804	68	1	86.36	83.82	11.11	6.10	2.72		
	-----	87914-6802	68	2	86.36	83.82	13.21	8.13	2.79	-----	87914-6805	68	2	86.36	83.82	11.11	6.10	2.72		
	-----	87914-6803	68	3	86.36	83.82	13.21	8.13	2.79	-----	87914-6806	68	3	86.36	83.82	11.11	6.10	2.72		
	-----	87914-7001	70	1	88.90	86.36	13.21	8.13	2.79	-----	87914-7004	70	1	88.90	86.36	11.11	6.10	2.72		
	-----	87914-7002	70	2	88.90	86.36	13.21	8.13	2.79	-----	87914-7005	70	2	88.90	86.36	11.11	6.10	2.72		
	-----	87914-7003	70	3	88.90	86.36	13.21	8.13	2.79	-----	87914-7006	70	3	88.90	86.36	11.11	6.10	2.72		

--	--	--	--	--	--	--	--	--	--	--	--	--	--	--	--	--	--	--	--	--

<b>EWR# 1010 &amp; 1021</b> EC NO: S2007-0182 DRWNS:SKL IM01 2006/09/11 CHKD:CWLAM 2006/09/12 APPR:KWLEE 2006/09/13	QUALITY SYMBOLS =0 =0	GENERAL TOLERANCES (UNLESS SPECIFIED)	DIMENSION STYLE <b>MM ONLY</b>	SCALE NTS	DESIGN UNITS METRIC	THIRD ANGLE PROJECTION		
		4 PLACES ± --- ± --- 3 PLACES ± --- ± --- 2 PLACES ± 0.2 ± --- 1 PLACE ± --- ± ---	DRAWN BY SKL IM01 DATE 2006/08/21	CHECKED BY CWLAM DATE 2006/09/04	TITLE <b>CUSTOM HEADER          C-GRID, SINGLE WAFER HDR,          THROU HOLE, VERTICAL, LF</b>			
		ANGULAR ± 3 °	APPROVED BY KWLEE DATE 2006/09/04	MOLEX INCORPORATED				
		DRAFT WHERE APPLICABLE MUST REMAIN WITHIN DIMENSIONS	MATERIAL NO. <b>SEE TABLE</b>	DOCUMENT NO. <b>SD-87914-059</b>	SHEET NO. <b>8 OF 9</b>			



F	10		9		8		7		6		5		4		3		2		1	
	PART NO FOR TRAY PACKAGING	PART NO FOR BULK PACKAGING	CKT SIZE	PLATING TYPE	DIMENSION					PART NO FOR TRAY PACKAGING	PART NO FOR BULK PACKAGING	CKT SIZE	PLATING TYPE	DIMENSION						
					A	B	F	M	P					A	B	F	M	P		
	-----	87914-7201	72	1	91.44	88.90	13.21	8.13	2.79	-----	87914-7204	72	1	91.44	88.90	11.11	6.10	2.72		
	-----	87914-7202	72	2	91.44	88.90	13.21	8.13	2.79	-----	87914-7205	72	2	91.44	88.90	11.11	6.10	2.72		
	-----	87914-7203	72	3	91.44	88.90	13.21	8.13	2.79	-----	87914-7206	72	3	91.44	88.90	11.11	6.10	2.72		
	-----	87914-7401	74	1	93.98	91.44	13.21	8.13	2.79	-----	87914-7404	74	1	93.98	91.44	11.11	6.10	2.72		
	-----	87914-7402	74	2	93.98	91.44	13.21	8.13	2.79	-----	87914-7405	74	2	93.98	91.44	11.11	6.10	2.72		
	-----	87914-7403	74	3	93.98	91.44	13.21	8.13	2.79	-----	87914-7406	74	3	93.98	91.44	11.11	6.10	2.72		
	-----	87914-7601	76	1	96.52	93.98	13.21	8.13	2.79	-----	87914-7604	76	1	96.52	93.98	11.11	6.10	2.72		
	-----	87914-7602	76	2	96.52	93.98	13.21	8.13	2.79	-----	87914-7605	76	2	96.52	93.98	11.11	6.10	2.72		
	-----	87914-7603	76	3	96.52	93.98	13.21	8.13	2.79	-----	87914-7606	76	3	96.52	93.98	11.11	6.10	2.72		
	-----	87914-7801	78	1	99.06	96.52	13.21	8.13	2.79	-----	87914-7804	78	1	99.06	96.52	11.11	6.10	2.72		
	-----	87914-7802	78	2	99.06	96.52	13.21	8.13	2.79	-----	87914-7805	78	2	99.06	96.52	11.11	6.10	2.72		
	-----	87914-7803	78	3	99.06	96.52	13.21	8.13	2.79	-----	87914-7806	78	3	99.06	96.52	11.11	6.10	2.72		
	-----	87914-8001	80	1	101.60	99.06	13.21	8.13	2.79	-----	87914-8004	80	1	101.60	99.06	11.11	6.10	2.72		
	-----	87914-8002	80	2	101.60	99.06	13.21	8.13	2.79	-----	87914-8005	80	2	101.60	99.06	11.11	6.10	2.72		
	-----	87914-8003	80	3	101.60	99.06	13.21	8.13	2.79	-----	87914-8006	80	3	101.60	99.06	11.11	6.10	2.72		

B																			
---	--	--	--	--	--	--	--	--	--	--	--	--	--	--	--	--	--	--	--

A	EWR# 1010 & 1021 EC NO: S2007-0182 DRWNS:SKL IM01 2006/09/11 CHKD:CWLAM 2006/09/12 APPR:KWLEE 2006/09/13	QUALITY SYMBOLS =0 =0	GENERAL TOLERANCES (UNLESS SPECIFIED) <table border="1"> <tr> <th></th> <th>mm</th> <th>INCH</th> </tr> <tr> <td>4 PLACES</td> <td>± ---</td> <td>± ---</td> </tr> <tr> <td>3 PLACES</td> <td>± ---</td> <td>± ---</td> </tr> <tr> <td>2 PLACES</td> <td>± 0.2</td> <td>± ---</td> </tr> <tr> <td>1 PLACE</td> <td>± ---</td> <td>± ---</td> </tr> <tr> <td colspan="3">ANGULAR ± 3 °</td> </tr> </table>		mm	INCH	4 PLACES	± ---	± ---	3 PLACES	± ---	± ---	2 PLACES	± 0.2	± ---	1 PLACE	± ---	± ---	ANGULAR ± 3 °			DIMENSION STYLE <b>MM ONLY</b>	SCALE NTS	DESIGN UNITS METRIC	THIRD ANGLE PROJECTION	DRAWN BY SKL IM01	DATE 2006/08/21	TITLE <b>CUSTOM HEADER          C-GRID, SINGLE WAFER HDR,          THROU HOLE, VERTICAL, LF</b>	CHECKED BY CWLAM	DATE 2006/09/04	APPROVED BY KWLEE	DATE 2006/09/04	MOLEX INCORPORATED	MATERIAL NO.	DOCUMENT NO. SD-87914-059	SHEET NO. 9 OF 9
			mm	INCH																																
		4 PLACES	± ---	± ---																																
		3 PLACES	± ---	± ---																																
2 PLACES	± 0.2	± ---																																		
1 PLACE	± ---	± ---																																		
ANGULAR ± 3 °																																				
DRAFT WHERE APPLICABLE MUST REMAIN WITHIN DIMENSIONS			SEE TABLE			THIS DRAWING CONTAINS INFORMATION THAT IS PROPRIETARY TO MOLEX INCORPORATED AND SHOULD NOT BE USED WITHOUT WRITTEN PERMISSION																														
SIZE 																																				
REV A																																				