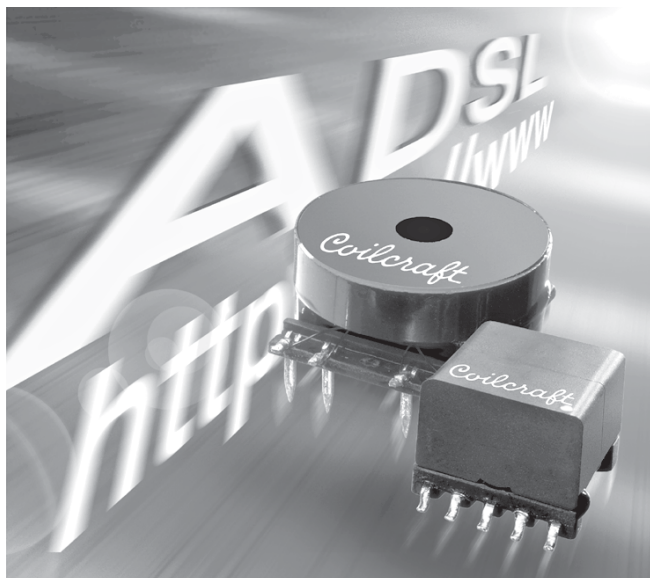


ADSL Transformers For Globespan chip sets



This product is not RoHS-compliant. Contact Coilcraft for current status or possible alternatives.

These transformers have been designed to provide optimum performance with a variety of GlobeSpan ADSL chipsets.

They feature very low leakage inductance, stable primary inductance from -40°C to $+85^{\circ}\text{C}$ and longitudinal balance optimized for the best overall performance at the ADSL transmission speed.

For free evaluation samples or to discuss custom designs, contact Coilcraft or visit www.coilcraft.com.

SPECIFICATIONS

Part number	Style	Chip set	Inductance (mH)	Leakage inductance max (μH)	DCR max (Ohms)	
					Chip side	Line side
AS8952-A	SMT	Titanium Fourte G7266	$0.474 \pm 10\%^1$	5	0.48 (1-4, 2-5)	0.88 (10-7, 9-6)
AS8954-A	SMT	Titanium Fourte G7266RT	$0.440 \pm 5\%^1$	5	0.36 (1-4, 2-5)	0.94 (10-7, 9-6)
AS8330-A	SMT	Titanium G7000	$0.430 \pm 10\%^2$	10	0.29 (10-7, 9-6)	0.32 (1-4, 2-5)
AS8424-A	SMT	Globespan EL-1501	$0.407 \pm 5\%^2$	10	0.363 (10-7, 9-6)	0.429 (1-4, 2-5)
AS8343-A	Leaded	GlobeSpan	$0.940 \pm 10\%^3$	10	1.0 (1-3, 2-4)	0.750 (9-7, 10-8)
AS8344-A	Leaded	GlobeSpan	$0.410 \pm 10\%^3$	10	0.340 (1-3, 2-4)	0.340 (9-7, 10-8)
AS8345-A	Leaded	GlobeSpan	$0.940 \pm 10\%^3$	15	1.0 (1-3, 2-4)	1.0 (9-7, 10-8)
AS8346-A	Leaded	GlobeSpan	$0.410 \pm 10\%^3$	10	0.340 (1-3, 2-4)	0.80 (9-7, 10-8)

Part number	Dielectric strength (V)	Turns ratio line:chip	Capacitance max (pF)	Longitudinal balance min (dB)	THD max (dB)	Designed to meet
AS8952-A	1875	1.41:1	40	55 (20 kHz – 1.1 MHz)	-90 @ 20 kHz	UL 1950
AS8954-A	1875	2:1	40	55 (20 kHz – 1.1 MHz)	-90 @ 20 kHz	UL 1950
AS8330-A	1875	1:1	40	40 (20 kHz – 1.1 MHz)	-80 @ 20 kHz	UL 1459, 1950
AS8424-A	1875	1:1	25	55 (20 kHz – 1.1 MHz)	-85 @ 20 kHz	UL 1459, 1950
AS8343-A	1500	1:1:1.4:1.4	90	50 @ 40 kHz	-80 @ 20 kHz	
AS8344-A	1500	1:1:1:1	90	50 @ 40 kHz	-80 @ 20 kHz	
AS8345-A	3000	1:1:1.4:1.4	90	55 @ 40 kHz	-70 @ 20 kHz	UL 1950
AS8346-A	3000	1:1:1:1	90	55 @ 40 kHz	-65 @ 20 kHz	UL 1950

1. Measured across pins 10-6 with pins 7-9 shorted.
2. Measured across pins 1-5 with pins 2-4 shorted.
3. Measured across pins 1-4 with pins 2-3 shorted.
4. All electrical specifications referenced to line side.
5. Operating temperature range -40°C to $+85^{\circ}\text{C}$.
6. Electrical specifications at 25°C .

Specifications subject to change without notice.

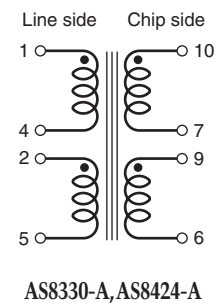
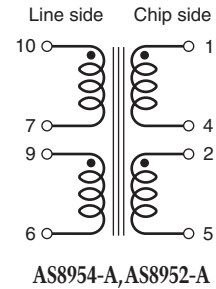
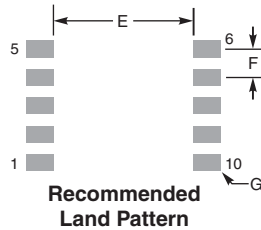
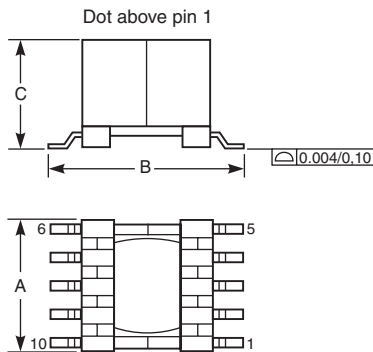
Please check our website for latest information. Document 216-1 Revised 08/20/07

1102 Silver Lake Road Cary, Illinois 60013 Phone 847/639-6400 Fax 847/639-1469

E-mail info@coilcraft.com Web <http://www.coilcraft.com>

ADSL Transformers for Globespan Chip Sets

AS8954-A, AS8952-A, AS8330-A, AS8424-A

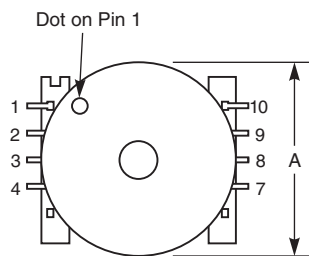


Note: For AS8424-A, pin 3 is removed after assembly.

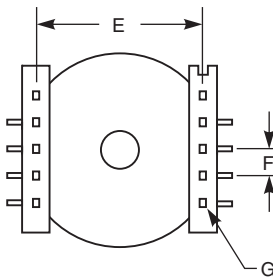
A max	B max	C max	E	F typ	G typ
0.530	0.699	0.500	0.590	0.098	0.050 × 0.061
13,46	17,75	12,70	14,99	2,50	1,27 × 1,55

Packaging 100 parts per tray

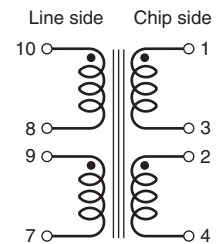
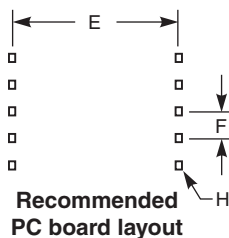
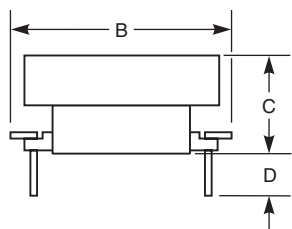
AS8343-A, AS8344-A, AS8345-A, AS8346-A



Top view



Bottom view



A max	B max	C max	D min	E	F typ	G typ	H typ
0.930	1.05	0.46	0.12	0.800	0.150	0.017 × 0.038	0.045 × 0.025
23,62	26,7	11,7	3,0	20,32	3,81	0,43 × 0,97	1,14 × 0,64

Packaging 49 parts per tray



Specifications subject to change without notice. Please check our website for latest information. Document 216-2 Revised 08/20/07

1102 Silver Lake Road Cary, Illinois 60013 Phone 847/639-6400 Fax 847/639-1469
E-mail info@coilcraft.com Web http://www.coilcraft.com