

PLEASE CHECK WWW.MOLEX.COM FOR LATEST PART INFORMATION

Part Number: [0441930004](#)
Status: **Active**
Overview: [modular_plugs_jacks](#)
Description: Modular Jack, Right Angle, Low Profile, SMT, 6/4, 2 Ports

Documents:

[3D Model](#) [Product Specification PS-43743-0001 \(PDF\)](#)
[Drawing \(PDF\)](#) [RoHS Certificate of Compliance \(PDF\)](#)

Agency Certification

CSA LR19980
 UL E107635

General

Product Family Modular Jacks/Plugs
 Series [44193](#)
 Comments Flush Solder Tabs
 Component Type PCB Jack
 Magnetic No
 Overview [modular_plugs_jacks](#)
 Performance Category 3, 4
 Power over Ethernet (PoE) N/A
 Product Name RJ11

Physical

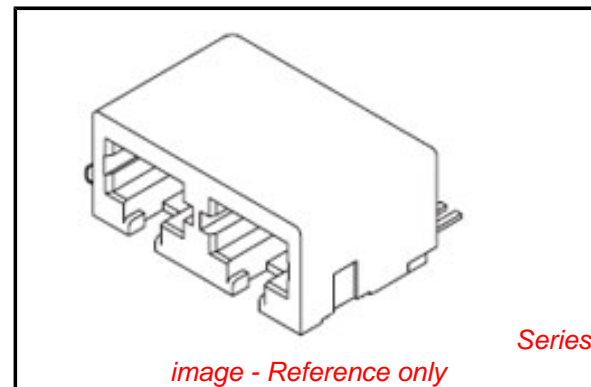
Color - Resin Black
 Durability (mating cycles max) 500
 Flammability 94V-0
 Inverted / Top Latch No
 Lightpipes/LEDs None
 Material - Metal Phosphor Bronze
 Material - Plating Mating Gold
 Material - Plating Termination Tin
 Material - Resin High Temperature Thermoplastic
 Orientation Right Angle (Side Entry)
 PCB Retention Yes
 Packaging Type Embossed Tape on Reel
 Plating min: Mating (µin) 50
 Plating min: Mating (µm) 1.25
 Plating min: Termination (µin) 100
 Plating min: Termination (µm) 2.5
 Ports 2
 Positions / Loaded Contacts 6/4
 Surface Mount Compatible (SMC) N/A
 Temperature Range - Operating -40°C to +80°C
 Termination Interface: Style Surface Mount
 Wire/Cable Type N/A

Electrical

Current - Maximum per Contact 1.5A
 Shielded No
 Voltage - Maximum 125V

Solder Process Data

Duration at Max. Process Temperature (seconds) 30
 Lead-free Process Capability Reflow Capable (SMT only)
 Max. Cycles at Max. Process Temperature 1



EU RoHS

**ELV and RoHS
 Compliant**
**REACH SVHC
 Contains SVHC: No**
**Halogen-Free
 Status**

China RoHS



**Need more information on product
 environmental compliance?**

Email productcompliance@molex.com
 For a multiple part number RoHS Certificate of
 Compliance, [click here](#)

Please visit the [Contact Us](#) section for any
 non-product compliance questions.

Search Parts in this Series

[44193Series](#)

Mates With

FCC 68 Plugs

Process Temperature max. C

235

Material Info

Reference - Drawing Numbers

Packaging Specification

PK-70873-700*

Product Specification

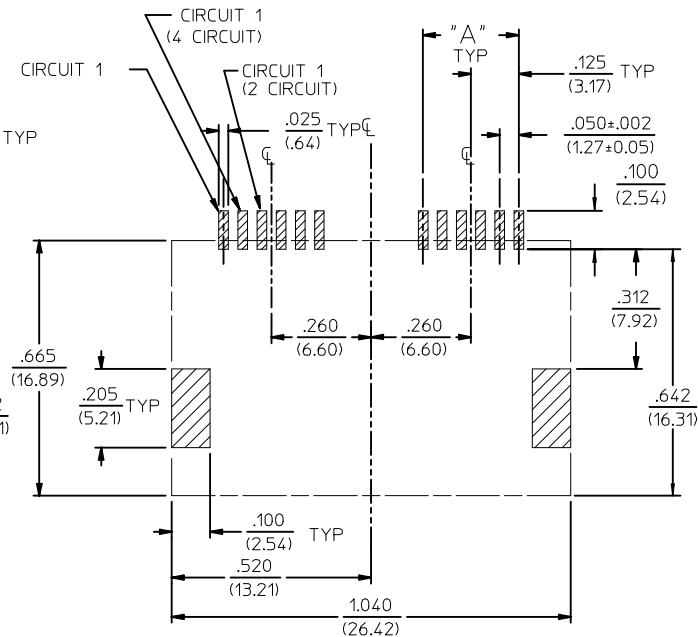
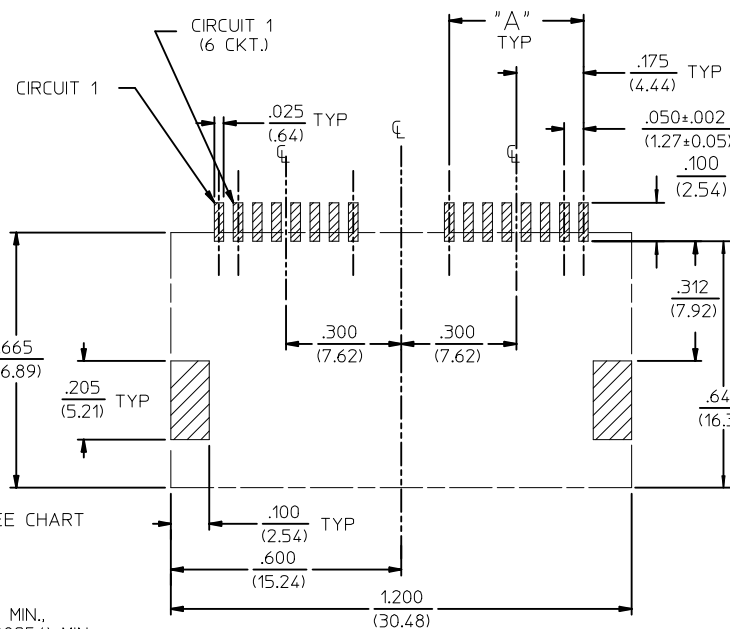
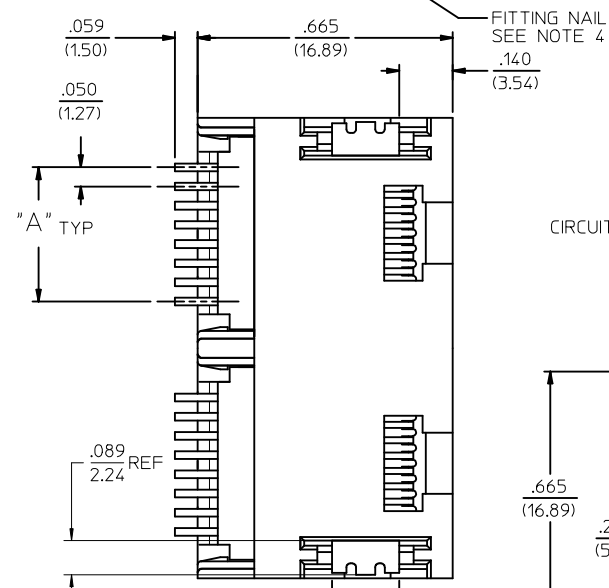
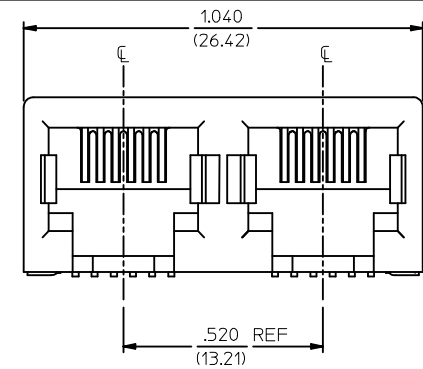
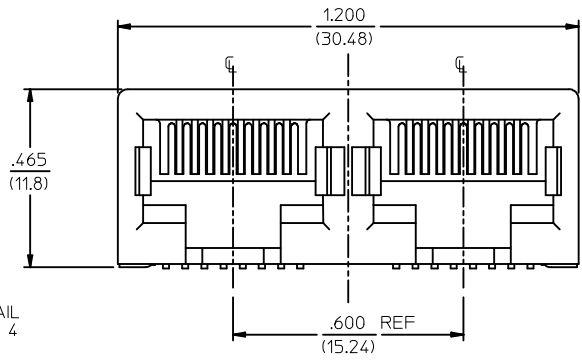
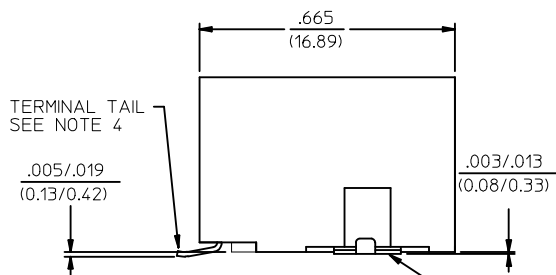
PS-43743-0001

Sales Drawing

SD-44193-001

This document was generated on 06/07/2010

PLEASE CHECK WWW.MOLEX.COM FOR LATEST PART INFORMATION



NOTES :

- 1) MATERIALS :
HOUSING : NYLON, GLASS-FILLED, UL94V-0, COLOR - SEE CHART
TERMINALS : PHOSPHOR BRONZE, .012/(0.30)
FITTING NAILS : BRASS ALLOY, .010/(0.25)
- 2) FINISH :
TERMINAL PLATING OPTIONS : (SEE TABLE)
(A) SELECT GOLD IN CONTACT AREA: .000050/(0.00127) MIN.,
*SELECT MATTE TIN IN PC TAIL AREA: .000100/(0.00254) MIN.,
WITH OVERALL NICKEL UNDERPLATE: .000050/(0.00127) MIN.
(B) SELECT GOLD IN CONTACT AREA: .000030/(0.00076) MIN.,
*SELECT MATTE TIN IN PC TAIL AREA: .000100/(0.00254) MIN.,
WITH OVERALL NICKEL UNDERPLATE: .000050/(0.00127) MIN.
(C) SELECT GOLD IN CONTACT AREA: .000015/(0.00038) MIN.,
*SELECT MATTE TIN IN PC TAIL AREA: .000100/(0.00254) MIN.,
WITH OVERALL NICKEL UNDERPLATE: .000050/(0.00127) MIN.
- FITTING NAILS :
*100 MICROINCHES MATTE TIN OVER 50 MICROINCHES NICKEL UNDERPLATE
*THE PRIMARY SHIPPING CARTON WILL BE LABELED "ELV AND
RoHS COMPLIANT". CARTONS WITHOUT THIS LABEL MAY
CONTAIN PRODUCT WITH TIN-LEAD IN THE PC TAIL AREA.
- 3) PRODUCT SPECIFICATION : PS-43743-001
- 4) COPLANARITY SPECIFICATIONS:
WITH THE MODULAR JACK SITTING ON A LEVEL SURFACE, THE MAXIMUM GAP BETWEEN
THE LEVEL SURFACE AND ALL TERMINAL TAILS AND BOTH FITTING NAILS IS .006/(0.15).
- 5) FOR ASSEMBLIES HAVING VOIDED CIRCUITS, THE TAIL PORTION IS CUT
AND REMOVED. THE MATING PORTION OF THE TERMINAL REMAINS INTACT.
VOIDED CIRCUITS MUST BE THE SAME FOR BOTH PORTS.
- 6) CONVECTION SOLDERING TECHNOLOGY SHOULD BE USED WHEN GANGING MODULAR
JACKS WITH INBOARD NAILS SIDE-BY-SIDE.
- 7) THIS PART CONFORMS TO CLASS B REQUIREMENTS OF COSMETIC
SPECIFICATION PS-45499-002.

PC BOARD LAYOUT FOR
8 POSITION HOUSING
(COMPONENT SIDE OF BOARD)

PC BOARD LAYOUT FOR
6 POSITION HOUSING
(COMPONENT SIDE OF BOARD)

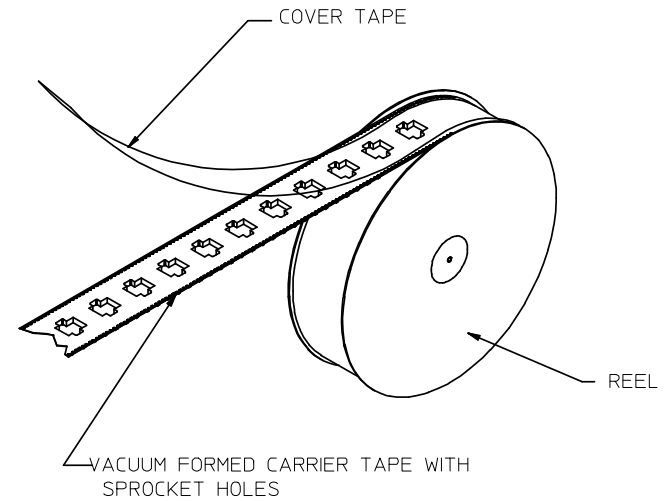
2	G1
1	G2
	SHREV

REVISED NOTES EC NO: UCP2009-1244 DRAWN: KLOSTNER 2008/12/10 CHKD: JEBEL 2008/12/10 APPR: FBMITH 2008/12/10 G2	DESCRIPTION QUALITY SYMBOLS ▽=0 ▽=0	GENERAL TOLERANCES (UNLESS SPECIFIED)		DIMENSION STYLE IN/MM	SCALE 1:1	DESIGN UNITS INCH	THIRD ANGLE PROJECTION		
		4 PLACES ± --- ± --- 3 PLACES ± --- ± .010 2 PLACES ± .025 ± .015 1 PLACE ± 0.38 ± ---	mm INCH	DRAWN BY MUELLER	DATE 98/06/11	TITLE 4, 6, & 8 CIRCUIT DUAL PORT SMT MODULAR JACK W/ FLUSH MOUNT NAILS			
		ANGULAR ±1/2°		CHECKED BY ROBERTS	DATE 98/06/16	MOLEX INCORPORATED			
		DRAFT WHERE APPLICABLE MUST REMAIN WITHIN DIMENSIONS		APPROVED BY EDGLEY	DATE 98/06/17	MATERIAL NO. SEE SHT 2	DOCUMENT NO. SD-44193-001	SHEET NO. 1 OF 2	

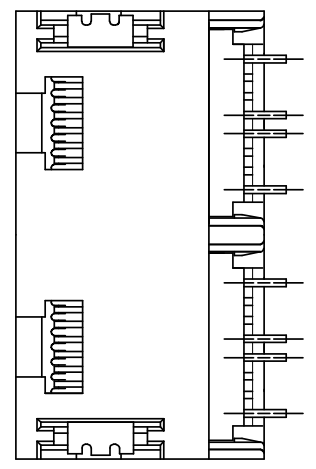
THIS DRAWING CONTAINS INFORMATION THAT IS PROPRIETARY TO MOLEX INCORPORATED AND SHOULD NOT BE USED WITHOUT WRITTEN PERMISSION

	13	12	11	10	9	8	7	6	5	4	3	2	1
	ASSEMBLY ITEM NO.	CONNECTOR SIZE	CIRCUIT SIZE	TERMINAL PLATING	TAPE & REEL PACKAGING NO.	VOIDED CIRCUITS	HOUSING COLOR						
J	44193-0001	8	4	A	PK-70873-7004	NA	BLACK						
	44193-0002	8	6	A	PK-70873-7004								
	44193-0003	8	8	A	PK-70873-7004								
I	44193-0004	6	4	A	PK-70873-7003								
	44193-0005	6	6	A	PK-70873-7003								
	44193-0006	8	4	B	PK-70873-7004								
H	44193-0007	8	6	B	PK-70873-7004								
	44193-0008	8	8	B	PK-70873-7004								
	44193-0009	6	4	B	PK-70873-7003								
	44193-0010	6	6	B	PK-70873-7003								
G	44193-0011	8	4	C	PK-70873-7004								
	44193-0012	8	6	C	PK-70873-7004								
	44193-0013	8	8	C	PK-70873-7004								
	44193-0014	6	4	C	PK-70873-7003								
F	44193-0015	6	6	C	PK-70873-7003								
	44193-0016	6	2	A	PK-70873-7003								
	44193-0017	6	2	B	PK-70873-7003								
E	44193-0018	6	2	C	PK-70873-7003								

HOUSING SIZE	CIRCUIT SIZE	DIM. A
6	6	.250 (6.35)
6	4	.150 (3.81)
6	2	.050 (1.27)
8	8	.350 (8.89)
8	6	.250 (6.35)
8	4	.150 (3.81)



TAPE AND REEL PACKAGING



TYPICAL VIEW SHOWING VOIDED CIRCUIT (CIRCUITS 2,3,6,7 SHOWN VOIDED)

OBSOLETE 441930019 EC NO: UCP2008-1189 DRAWN: JBELL 2007/11/30 CHKD: LSCHMIDT 2008/02/20 APPR: FSMITH 2008/03/04	QUALITY SYMBOLS	GENERAL TOLERANCES (UNLESS SPECIFIED)	DIMENSION STYLE	SCALE	DESIGN UNITS	THIRD ANGLE PROJECTION																																	
	$\nabla=0$ $\nabla=0$	<table border="1"> <thead> <tr> <th></th> <th>mm</th> <th>INCH</th> </tr> </thead> <tbody> <tr> <td>4 PLACES</td> <td>±---</td> <td>±---</td> </tr> <tr> <td>3 PLACES</td> <td>±---</td> <td>±.010</td> </tr> <tr> <td>2 PLACES</td> <td>±0.25</td> <td>±.015</td> </tr> <tr> <td>1 PLACE</td> <td>±0.38</td> <td>±---</td> </tr> </tbody> </table>		mm	INCH	4 PLACES	±---	±---	3 PLACES	±---	±.010	2 PLACES	±0.25	±.015	1 PLACE	±0.38	±---	<table border="1"> <thead> <tr> <th>DRAWN BY</th> <th>DATE</th> <th>TITLE</th> </tr> </thead> <tbody> <tr> <td>MUELLER</td> <td>98/06/11</td> <td rowspan="2">2 PORT SMT. JACK ASSY W/FLUSH MOUNT NAILS</td> </tr> <tr> <td>CHECKED BY</td> <td>DATE</td> </tr> <tr> <td>ROBERTS</td> <td>98/06/16</td> <td></td> </tr> <tr> <td>APPROVED BY</td> <td>DATE</td> <td></td> </tr> <tr> <td>EDGLEY</td> <td>98/06/17</td> <td></td> </tr> </tbody> </table>	DRAWN BY	DATE	TITLE	MUELLER	98/06/11	2 PORT SMT. JACK ASSY W/FLUSH MOUNT NAILS	CHECKED BY	DATE	ROBERTS	98/06/16		APPROVED BY	DATE		EDGLEY	98/06/17		IN/MM	4:1	INCH	
		mm	INCH																																				
	4 PLACES	±---	±---																																				
3 PLACES	±---	±.010																																					
2 PLACES	±0.25	±.015																																					
1 PLACE	±0.38	±---																																					
DRAWN BY	DATE	TITLE																																					
MUELLER	98/06/11	2 PORT SMT. JACK ASSY W/FLUSH MOUNT NAILS																																					
CHECKED BY	DATE																																						
ROBERTS	98/06/16																																						
APPROVED BY	DATE																																						
EDGLEY	98/06/17																																						
DRAFT WHERE APPLICABLE MUST REMAIN WITHIN DIMENSIONS	SEE CHART	MATERIAL NO. SD-44193-001	DOCUMENT NO.	SHEET NO. 2 OF 2																																			
G1	REV	THIS DRAWING CONTAINS INFORMATION THAT IS PROPRIETARY TO MOLEX INCORPORATED AND SHOULD NOT BE USED WITHOUT WRITTEN PERMISSION																																					