

PLEASE CHECK WWW.MOLEX.COM FOR LATEST PART INFORMATION

Part Number: [5013300300](#)
Status: **Active**
Overview: [picoclasp](#)
Description: 1.00mm (.039") Pitch Pico-Clasp™ Wire-to-Board Female Housing, Single Row, with Friction Lock, 3 Circuits

Documents:

[3D Model](#) [Product Specification PS-501331-001 \(PDF\)](#)
[Drawing \(PDF\)](#) [RoHS Certificate of Compliance \(PDF\)](#)

General

Product Family Crimp Housings
 Series [501330](#)
 Overview [picoclasp](#)
 Product Name Pico-Clasp™

Physical

Circuits (maximum) 3
 Color - Resin White
 Gender Female
 Glow-Wire Compliant No
 Lock to Mating Part Yes
 Material - Resin Nylon
 Number of Rows 1
 Packaging Type Bag
 Panel Mount No
 Pitch - Mating Interface (in) 0.039 In
 Pitch - Mating Interface (mm) 1.00 mm
 Polarized to Mating Part Yes
 Stackable No
 Temperature Range - Operating -40°C to +85°C

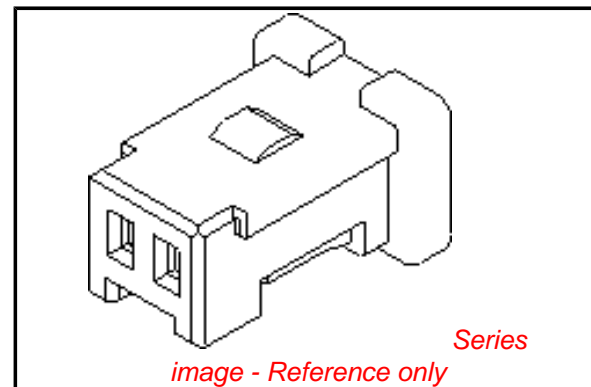
Electrical

Current - Maximum per Contact 1A

Material Info

Reference - Drawing Numbers

Packaging Specification SPK-501330-001
 Product Specification PS-501331-001, RPS-501331-001, RPS-501331-002, RPS-501331-003, RPS-501331-006, RPS-501331-007, RPS-501568-002
 Sales Drawing SD-501330-001



EU RoHS

ELV and RoHS Compliant
REACH SVHC
 Not Reviewed
Halogen-Free Status
Not Reviewed

China RoHS



Need more information on product environmental compliance?

Email productcompliance@molex.com
 For a multiple part number RoHS Certificate of Compliance, [click here](#)

Please visit the [Contact Us](#) section for any non-product compliance questions.

Search Parts in this Series

[501330Series](#)

Mates With

[501331 PCB Header](#) . [501568 PCB Header](#)

Use With

[501334 Crimp Terminal](#)

10 9 8 7 6 5 4 3 2 1

F

E

D

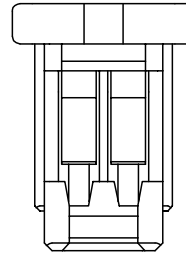
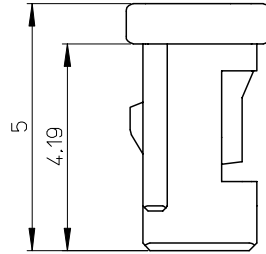
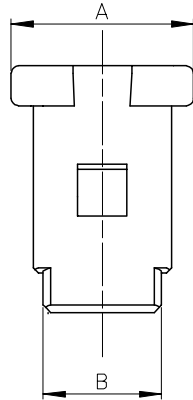
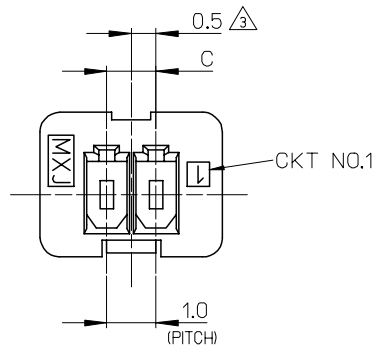
C

B

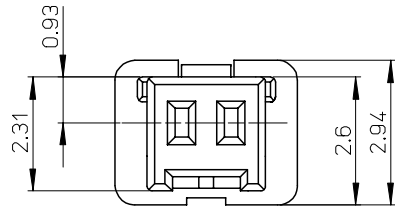
A

NOTES.

1. 適合ターミナル: 501334-****
APPLICABLE TERMINAL: 501334-****
2. 嵌合相手: 501331-****
MATE WITH: 501331-****
- △ 3. 偶数極に適用
APPLY FOR EVEN CIRCUIT SIZE
4. 6-15極は、SD-501330-002を参照下さい。
REFER TO SD-501330-002 ABOUT 6-15CKT.



※対応可能な極数は、別途お問い合わせ下さい。



4.0	5.4	6.7	501330-0500	5	501330-xx00
3.0	4.4	5.7	501330-0400	4	
2.0	3.4	4.7	501330-0300	3	
1.0	2.4	3.7	501330-0200	2	
C	B	A	MATERIAL NO.	CKT.	MODEL NO.

材料
MATERIAL
66ナイロン 色:白
66NYLON COLOR:WHITE
ガラス無充填
GLASS FILLED : 0%
UL94V-0

REVISED	DESCRIPTION
EC NO: J2005-1980	2005/01/18
DRWN: NYOSHIDA	2005/01/19
CHKD: MYAGI	2005/01/26
APPR: ANODA	
A	REV

GENERAL TOLERANCES
(UNLESS SPECIFIED)

10 UNDER	±0.2
10 OVER 30 UNDER	±0.25
30 OVER	±0.3
ANGULAR	±3 °

DRAFT WHERE APPLICABLE
MUST REMAIN
WITHIN DIMENSIONS

DIMENSION STYLE
MM ONLY

DRAWN BY	DATE
NYOSHIDA	2004/07/30
CHECKED BY	DATE
MYAGI	2004/07/30
APPROVED BY	DATE
MIYAZAWA	2004/07/30
MATERIAL NO.	
SIZE	A3

SEE CHART

SCALE 10:1

DESIGN UNITS METRIC

THIRD ANGLE PROJECTION

TITLE
1.0 WIRE TO BOARD CONN.
1-ROW RECEPTACLE HOUSING
2-5CKT.

MOLEX MOLEX INCORPORATED

DOCUMENT NO. SD-501330-001

SHEET NO. 1 OF 1

THIS DRAWING CONTAINS INFORMATION THAT IS PROPRIETARY TO MOLEX INCORPORATED AND SHOULD NOT BE USED WITHOUT WRITTEN PERMISSION

9

8

7

6

5

4

3

2