

PLEASE CHECK WWW.MOLEX.COM FOR LATEST PART INFORMATION

Part Number: [0780372001](#)
Status: **Active**
Overview: [projector lamp connector](#)
Description: Projector Lamp Plug Terminal, 0.90µm (35.4µ") Tin (Sn) Plated, Bent WingType, Lead free

Documents:

[Drawing \(PDF\)](#) [RoHS Certificate of Compliance \(PDF\)](#)
[Product Specification PS-78036-001 \(PDF\)](#)

General

Product Family	Crimp Terminals
Series	78037
Comments	Without Insulation Crimp
Crimp Quality Equipment	Yes
Overview	projector lamp connector
Product Name	DLP*

Physical

Durability (mating cycles max)	250
Gender	Male
Material - Metal	Copper Alloy
Material - Plating Mating	Tin
Material - Plating Termination	Nickel
Packaging Type	Reel
Plating min: Mating (µin)	36
Plating min: Mating (µm)	0.90
Plating min: Termination (µin)	20
Plating min: Termination (µm)	0.50
Termination Interface: Style	Crimp or Compression
Wire Insulation Diameter	2.06-3.85mm (.081-.152")
Wire Size AWG	18, 20, 22
Wire Size mm ²	N/A

Electrical

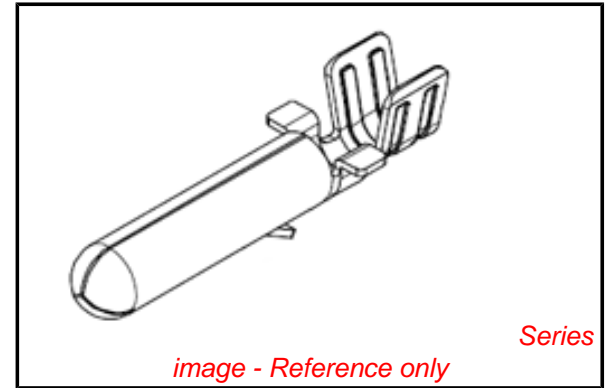
Current - Maximum per Contact	10A
Voltage - Maximum	250V AC (RMS)

Material Info

Reference - Drawing Numbers

Product Specification	PS-78036-001
Sales Drawing	SD-78037-005

* DLP is a registered trademark of Texas Instruments Incorporated



EU RoHS

**ELV and RoHS
Compliant**
**REACH SVHC
Contains SVHC: No**
**Halogen-Free
Status**

China RoHS



**Need more information on product
environmental compliance?**

Email productcompliance@molex.com
 For a multiple part number RoHS Certificate of Compliance, [click here](#)

Please visit the [Contact Us](#) section for any non-product compliance questions.

Search Parts in this Series

[78037Series](#)

Mates With

[78036-2001 Bent Wing Receptacle Terminal](#)

Application Tooling | FAQ

Tooling specifications and manuals are found by selecting the products below. Crimp Height Specifications are then contained in the Application Tooling Specification document.

Global

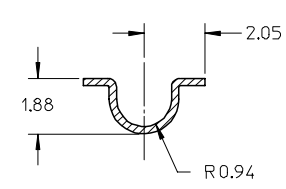
Description	Product #
FineAdjust™ Applicator for Sabre™ Flat Blade Crimp Terminal, 18-22 AWG	0639014100
T2 Terminator for Projector Lamp Plug and Receptacle Terminal, 18-20 AWG	0639114100

Hand Crimp Tool 0638199600
For Projector Lamp
Plug and Receptacle
Terminal

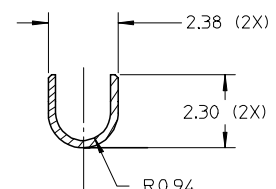
This document was generated on 05/20/2010

PLEASE CHECK WWW.MOLEX.COM FOR LATEST PART INFORMATION

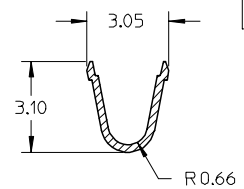
PRODUCT SPECIFICATION NUMBER	HOUSING PART NUMBER	TERMINAL PART NUMBER	WING TYPE △
PS-78036-001	78037-1001 OR 78166-1001	78037-2001	BEND
PS-78196-001	78197-1001	78037-2005	STRAIGHT



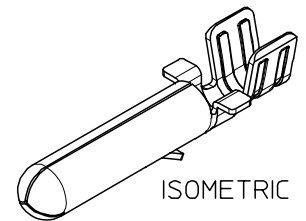
SECTION Y-Y
△ BEND WING TYPE



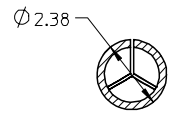
SECTION Y-Y
STRAIGHT WING TYPE △



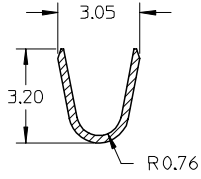
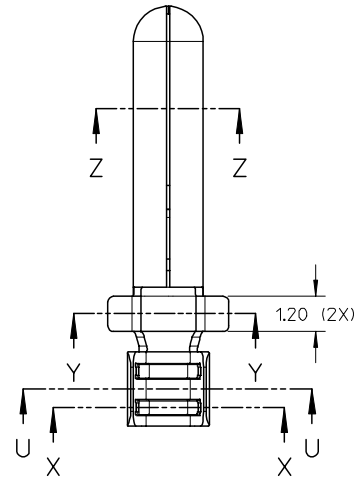
SECTION X-X



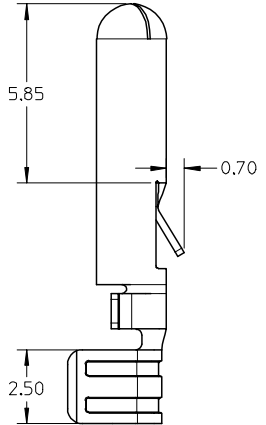
ISOMETRIC VIEW



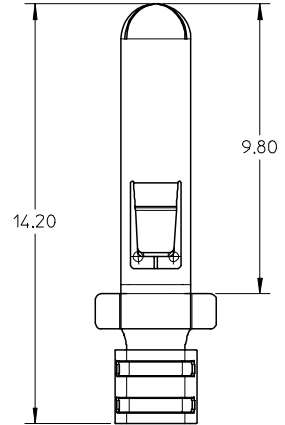
SECTION Z-Z



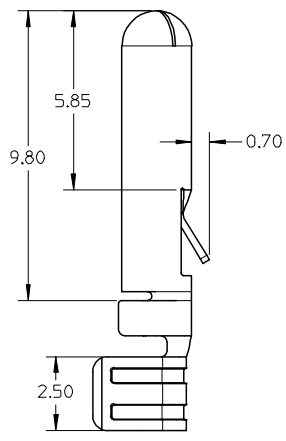
SECTION U-U



BEND WING TYPE △

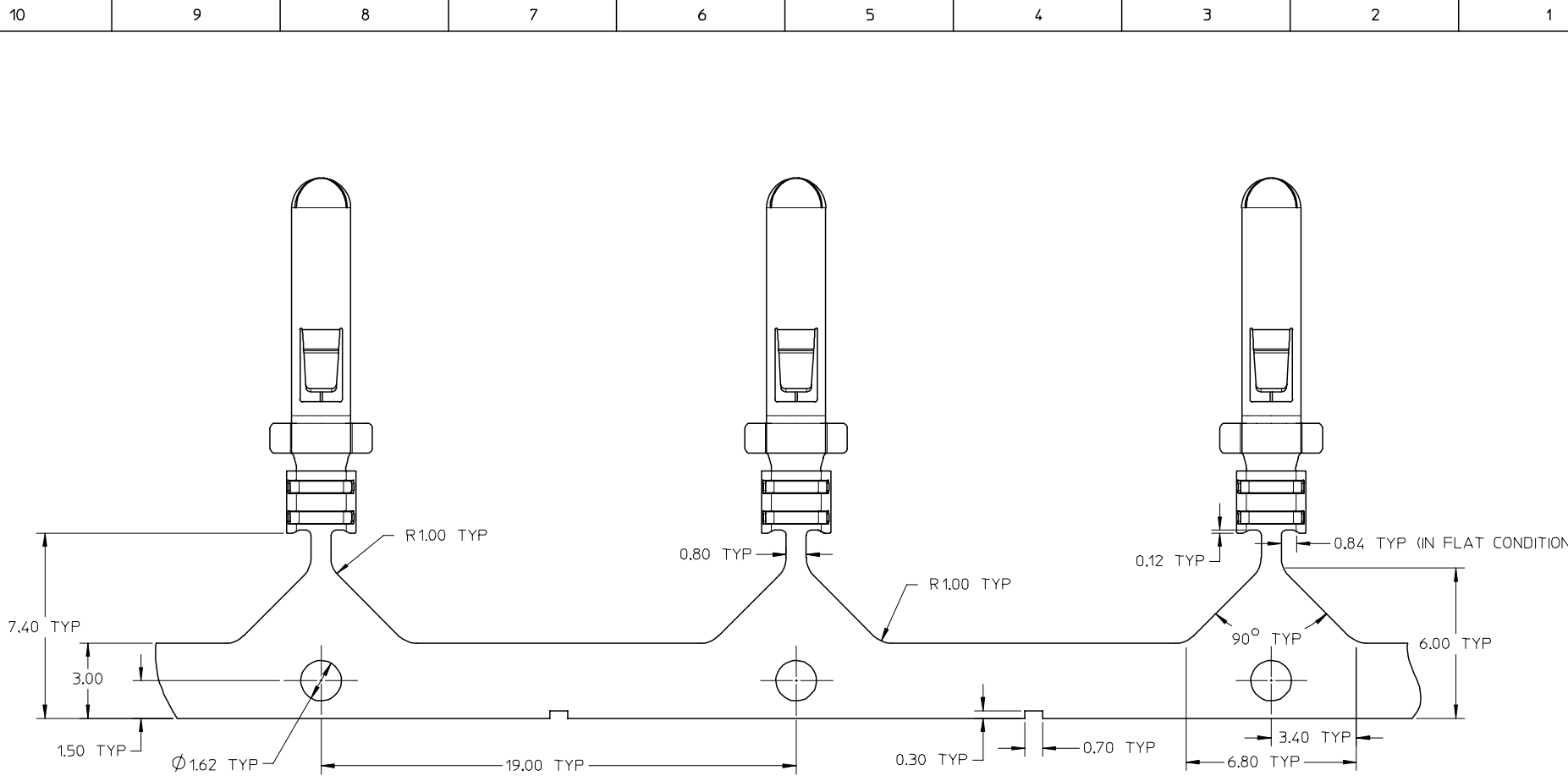


STRAIGHT WING TYPE △



- NOTES:
- MATERIAL: COPPER ALLOY
PLATING SPEC.: 0.94µm MIN. TIN OVER 0.54µm MIN. NICKEL UNDERPLATE.
 - HOUSING TO BE USED WITH : SEE TABLE.
 - CRIMP SPECIFICATION : CS-78036-001.
 - PRODUCT SPECIFICATION : SEE TABLE.
 - PACKAGING INFORMATION : PAPER REEL.
 - △ THE FIGURE SHOWN IS FOR ILLUSTRATION PURPOSE.
IT IS APPLIED TO BOTH STRAIGHT AND BEND WING TYPE.
 - △ REFER TO TABLE FOR PART NUMBER.

REVISED EC NO: S2007-1075 DRWN: BOKOK CHKD: YKH APPR: KCLING 2007/08/22 2007/08/24 2007/08/24	QUALITY SYMBOLS	GENERAL TOLERANCES (UNLESS SPECIFIED)	DIMENSION STYLE	SCALE	DESIGN UNITS	THIRD ANGLE PROJECTION	
	▽=0 △=0	mm INCH	MM ONLY	NTS	METRIC		
		4 PLACES ± --- ± --- 3 PLACES ± --- ± --- 2 PLACES ± 0.30 ± --- 1 PLACE ± --- ± ---	DRAWN BY DATE BOKOK 2007/02/26	TITLE	PROJECTOR LAMP CONNECTOR 13MM PITCH, PLUG TERMINAL		
		ANGULAR ± 3 °	CHECKED BY DATE CGOH 2007/03/01	APPROVED BY DATE KCLING 2007/03/01	MOLEX INCORPORATED		
A2	DESCRIPTION	DRAFT WHERE APPLICABLE MUST REMAIN WITHIN DIMENSIONS	SEE TABLE	MATERIAL NO.	DOCUMENT NO.	SHEET NO.	
	REV		SIZE A3	SD-78037-005 1 OF 3			



TERMINAL LAYOUT \triangle

REVISED EC NO: S2007-1075 DRWN: BOKOK CHKD: YOH APPR: KCLING	2007/08/22 2007/08/24 2007/08/24	QUALITY SYMBOLS $\nabla=0$ $\triangle=0$	GENERAL TOLERANCES (UNLESS SPECIFIED)		DIMENSION STYLE MM ONLY		SCALE NTS	DESIGN UNITS METRIC	\triangle THIRD ANGLE PROJECTION			
	DESCRIPTION REV		mm INCH	DRAWN BY BOKOK	DATE 2007/02/26	TITLE PROJECTOR LAMP CONNECTOR 13MM PITCH, PLUG TERMINAL						
	4 PLACES 3 PLACES 2 PLACES 1 PLACE		\pm --- \pm --- ± 0.30 \pm ---	\pm --- \pm --- \pm --- \pm ---	CHECKED BY CGOH	DATE 2007/03/01	MOLEX INCORPORATED					
	ANGULAR $\pm 3^\circ$		DRAFT WHERE APPLICABLE MUST REMAIN WITHIN DIMENSIONS		APPROVED BY KCLING	DATE 2007/03/01	SEE TABLE		DOCUMENT NO. SD-78037-005	SHEET NO. 2 OF 3		
	A2		SIZE A3	THIS DRAWING CONTAINS INFORMATION THAT IS PROPRIETARY TO MOLEX INCORPORATED AND SHOULD NOT BE USED WITHOUT WRITTEN PERMISSION								

10 9 8 7 6 5 4 3 2 1

F

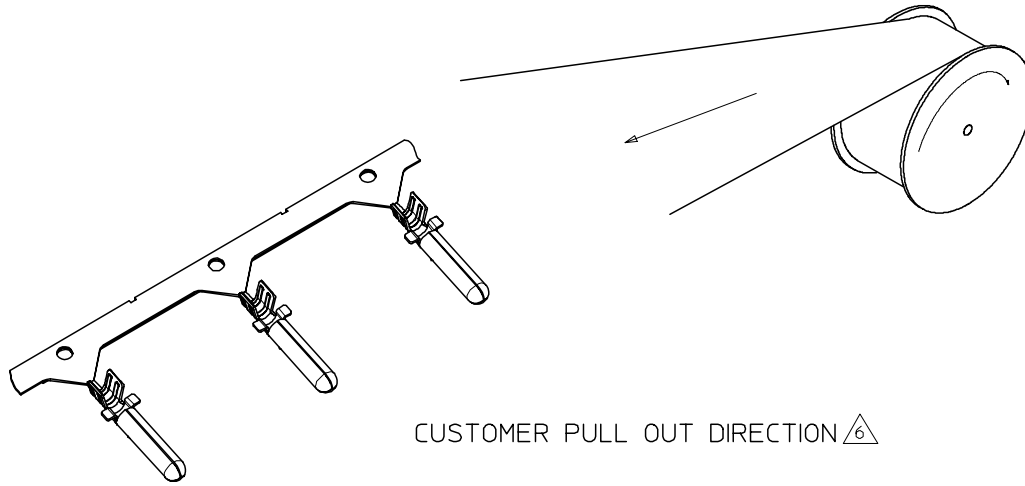
E

D

C

B

A



CUSTOMER PULL OUT DIRECTION $\triangle 6$

REVISED EC NO: S2007-1075 DRWN: BOKOK CHKD: YOH APPR: KCLING	2007/08/22 2007/08/24 2007/08/24	DESCRIPTION REV	QUALITY SYMBOLS $\blacktriangledown = 0$ $\triangle C = 0$	GENERAL TOLERANCES (UNLESS SPECIFIED)		DIMENSION STYLE MM ONLY		SCALE NTS	DESIGN UNITS METRIC	$\text{Third Angle Projection Symbol}$ THIRD ANGLE PROJECTION	
				4 PLACES \pm --- \pm --- 3 PLACES \pm --- \pm --- 2 PLACES ± 0.30 \pm --- 1 PLACE \pm --- \pm ---	mm INCH	DRAWN BY BOKOK	DATE 2007/02/26	TITLE PROJECTOR LAMP CONNECTOR 13MM PITCH, PLUG TERMINAL			
				ANGULAR $\pm 3^\circ$	CHECKED BY CGOH	DATE 2007/03/01	MOLEX INCORPORATED				
			DRAFT WHERE APPLICABLE MUST REMAIN WITHIN DIMENSIONS	APPROVED BY KCLING	DATE 2007/03/01	MATERIAL NO. SEE TABLE	DOCUMENT NO. SD-78037-005	SHEET NO. 3 OF 3			

9 8 7 6 5 4 3 2 1