

**PLEASE CHECK WWW.MOLEX.COM FOR LATEST PART INFORMATION**

**Part Number:** [1050481001](#)  
**Status:** **Active**  
**Description:** 2.54mm (.100") SIM Card Connector, 6 Circuits, SMT, with Guide Rail, Housing Height 1.45mm (.057"), Lead Free

**Documents:**

[Drawing \(PDF\)](#) [RoHS Certificate of Compliance \(PDF\)](#)  
[Product Specification PS-105048-001 \(PDF\)](#)

**General**

Product Family	Memory Card Sockets
Series	<a href="#">105048</a>
Button Type	N/A
Component Type	Card Holder (Host)
Product Name	SIM
Type	N/A

**Physical**

Card Detection Switch	No
Circuits (Loaded)	6
Circuits (maximum)	6
Color - Resin	Black
Durability (mating cycles max)	5,000
Ejector Button Side	No Ejector Button Present
Entry Angle	Horizontal
Keying to Mating Part	Yes
Material - Metal	Stainless Steel
Material - Plating Mating	Gold
Material - Plating Termination	Gold
Material - Resin	High Temperature Thermoplastic
PCB Locator	No
PCB Mounting Side	Normal
PCB Retention	Yes
Packaging Type	Embossed Tape on Reel
Pitch - Mating Interface (in)	0.100 In
Pitch - Mating Interface (mm)	2.54 mm
Pitch - Term. Interface (in)	0.100 In
Pitch - Term. Interface (mm)	2.54 mm
Plating min: Mating (µin)	15
Plating min: Mating (µm)	0.38
Plating min: Termination (µin)	3
Plating min: Termination (µm)	0.076
Ports	1
Temperature Range - Operating	-40°C to +85°C
Termination Interface: Style	Surface Mount

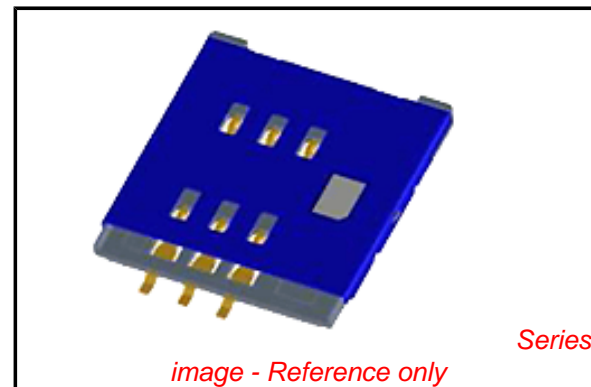
**Electrical**

Current - Maximum per Contact	0.5A
Shielded	Yes
Voltage - Maximum	5V DC

**Material Info**

**Reference - Drawing Numbers**

Product Specification	PS-105048-001
Sales Drawing	SD-105048-101



**EU RoHS**

**ELV and RoHS  
Compliant**  
**REACH SVHC**  
 Not Reviewed  
**Halogen-Free  
Status**

**China RoHS**



**Not Reviewed**

**Need more information on product  
environmental compliance?**

Email [productcompliance@molex.com](mailto:productcompliance@molex.com)  
 For a multiple part number RoHS Certificate of Compliance, [click here](#)

Please visit the [Contact Us](#) section for any non-product compliance questions.

**Search Parts in this Series**

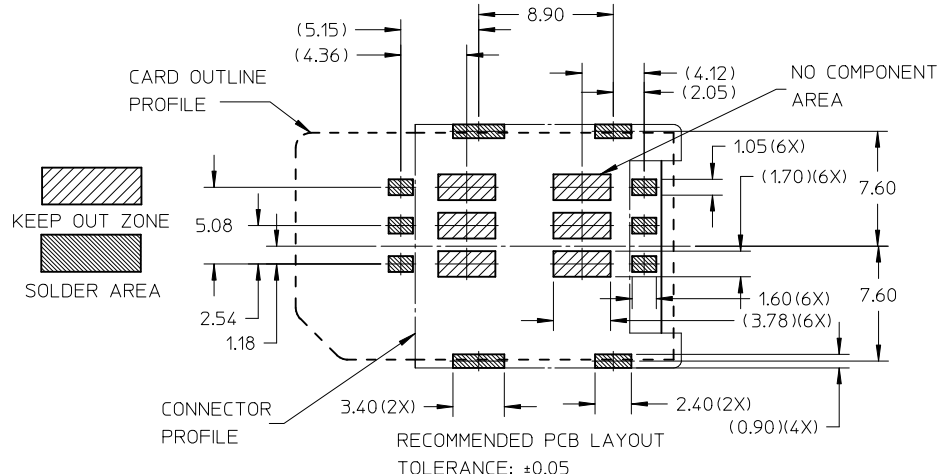
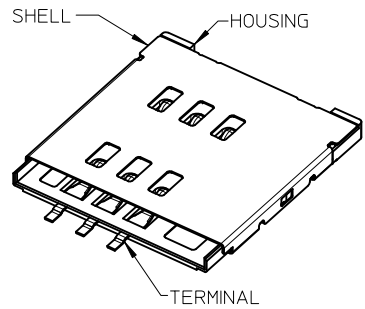
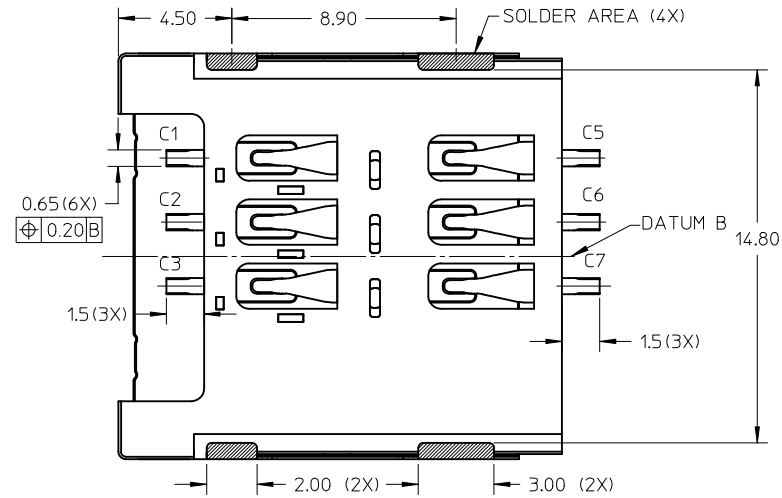
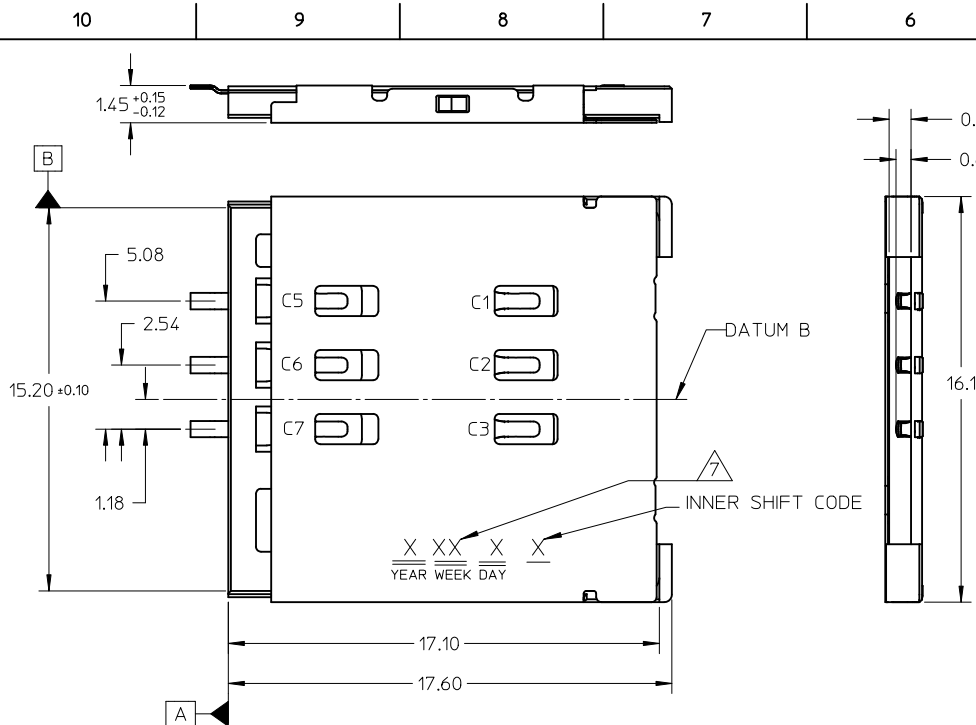
[105048Series](#)

**Mates With**

Standard SIM Card

This document was generated on 05/18/2010

**PLEASE CHECK [WWW.MOLEX.COM](http://WWW.MOLEX.COM) FOR LATEST PART INFORMATION**



- NOTE:
- MATERIAL  
HOUSING : LIQUID CRYSTALLINE POLYMER (LCP), GLASS FILLED UL94V-0, COLOR: BLACK  
TERMINAL: PHOSPHOR BRONZE  
SHELL : STAINLESS STEEL
  - FINISHES  
TERMINAL: 0.375um (15u") MIN GOLD ON CONTACT AREA  
0.0762 - 0.127um (3 - 5u") GOLD FLASH ON SOLDER TAILS  
1.27um (50u") MIN NICKEL UNDERPLATE OVER ALL  
SHELL : 0.0762um (3u") MIN GOLD FLASH OVER 1.27UM (50u") MIN NICKEL UNDERPLATE ON SOLDER AREAS
  - PRODUCT SPECIFICATION: PS-105048-001
  - PACKAGING SPECIFICATION: PK-105048-001
  - ALL SOLDER TAILS COPLANARITY: 0.08mm MAX
  - COMPLIANT TO RoHS DIRECTIVE 2002/95/EC & ELV DIRECTIVE 2000/53/EC
  - DATE CODE \* \* \* \* (4 DIGITS)

<b>MODIFIED SHELL</b> EC NO: S2010-0862 DRW:KHLIM 2010/04/13 CHKD:JTAN 2010/05/04 APPR:SKTOH 2010/06/02	QUALITY SYMBOLS $\nabla_A = 0$ $\nabla_C = 0$ $\nabla_B = 0$	GENERAL TOLERANCES (UNLESS SPECIFIED)		DIMENSION STYLE <b>MM ONLY</b>		SCALE NTS	DESIGN UNITS METRIC	THIRD ANGLE PROJECTION			
		4 PLACES ± --- ± ---	3 PLACES ± --- ± ---	2 PLACES ± 0.15 ± ---	1 PLACE ± 0.20 ± ---	DRAWN BY JXYONG	DATE 2010/01/04	TITLE <b>SIM CONNECTOR 6 PINS WITH GUIDE RAIL 1.45MM HEIGHT</b>			
		ANGULAR ± 3 °				CHECKED BY FCS00	DATE 2010/02/05	MOLEX INCORPORATED			
		DRAFT WHERE APPLICABLE MUST REMAIN WITHIN DIMENSIONS				APPROVED BY KHLIM	DATE 2010/02/11	MATERIAL NO. <b>1050481001</b>	DOCUMENT NO. <b>SD-105048-101</b>	SHEET NO. <b>1 OF 1</b>	