



Part Number	Package	Application	Last Modified
803-RF430.0M-A	3.8 x 3.8 SMD	Wireless	Mar. 2 2007

TYPE :  
Wireless RF SAW Filter



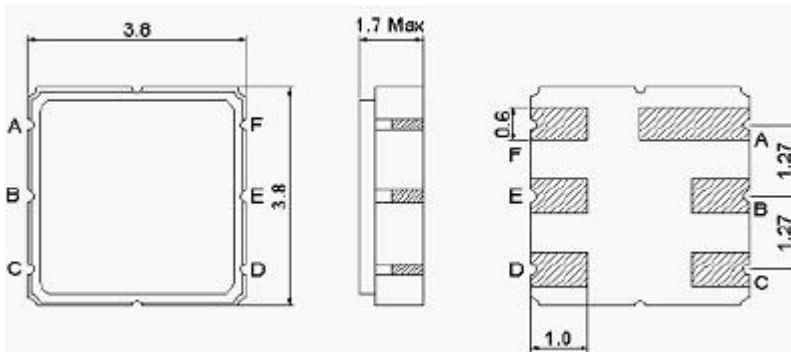
PART NUMBER :  
**803-RF430.0M-A**

**OPERATING CONDITIONS / ELECTRICAL CHARACTERISTICS**

PARAMETERS	Condition	Minimum	Typical	Maximum	Units
Center Frequency (Fo)	-	-	430.0	-	MHz
Insertion Loss	428.0 ~ 432.0 MHz	-	3.7	4.5	dB
Attenuation:	Fo-100 ~ Fo-40.8 MHz	50	62	-	dB
	Fo+40.8 ~ Fo+100 MHz	50	61	-	
Source Impedance (single ended)*	-	-	50	-	ohm
Load Impedance (single ended)*	-	-	50	-	ohm
Amplitude Ripple	428.0 ~ 432.0 MHz	-	1.5	2.0	dBp-p
Maximum Input Power	-	-	-	0	dBm
Maximum DC Voltage	-	-	-	10	V
Operating Temperature	-	-10	-	+65	°C

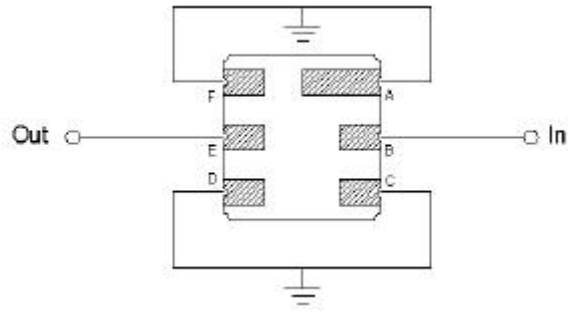
\* No Matching Network (Ref. Testing Environment Circuit as shown)

**PACKAGE OUTLINE (mm)**



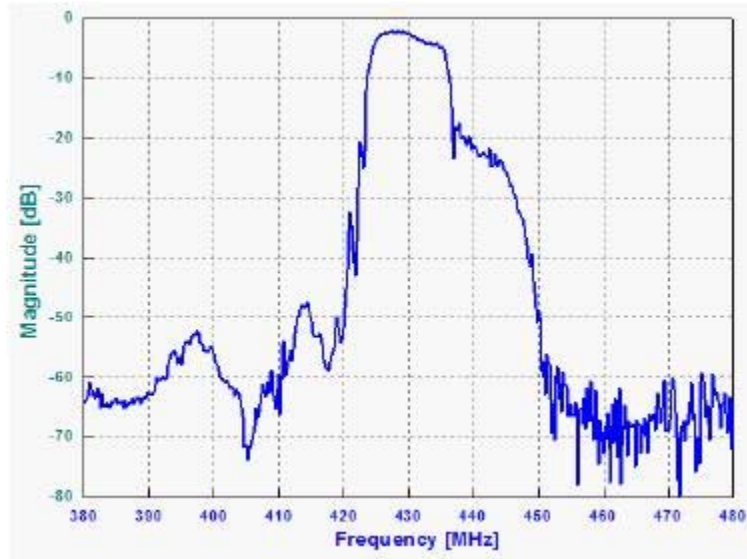
PIN LAYOUT	
A	Ground
B	In
C	Ground
D	Ground
E	Out
F	Ground

**TEST FIXTURE**



Source/ Load Impedance = 50 ohms

## FREQUENCY RESPONSE



**Oscilent Corporation** - CALL **949.252.0522**  
 18195 East McDermott Street , Building D , Irvine , CA 92614 , USA  
 Fax: 949.252.0599 , E-Mail: Sales@Oscilent.com

**Part No.:** 803-RF430.0M-A